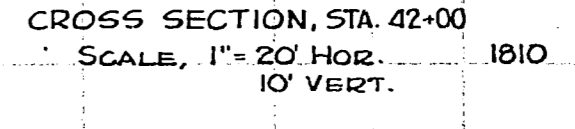
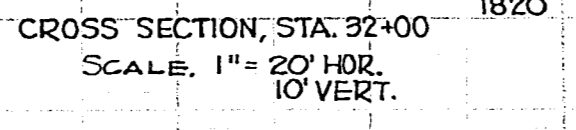
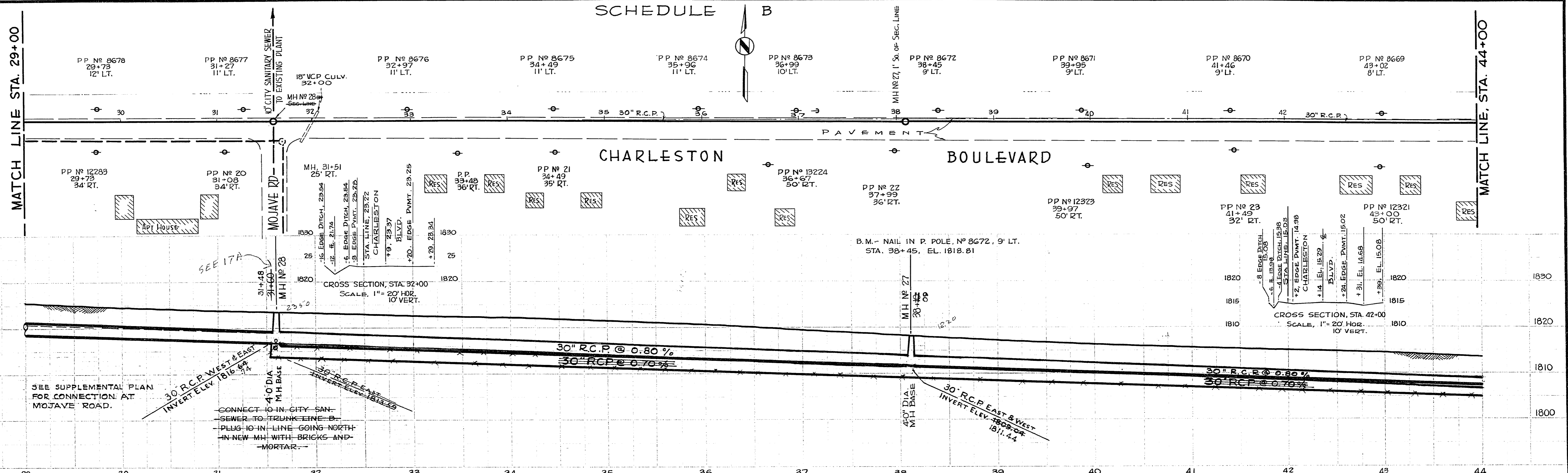
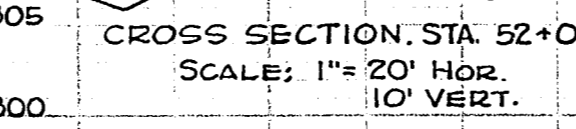
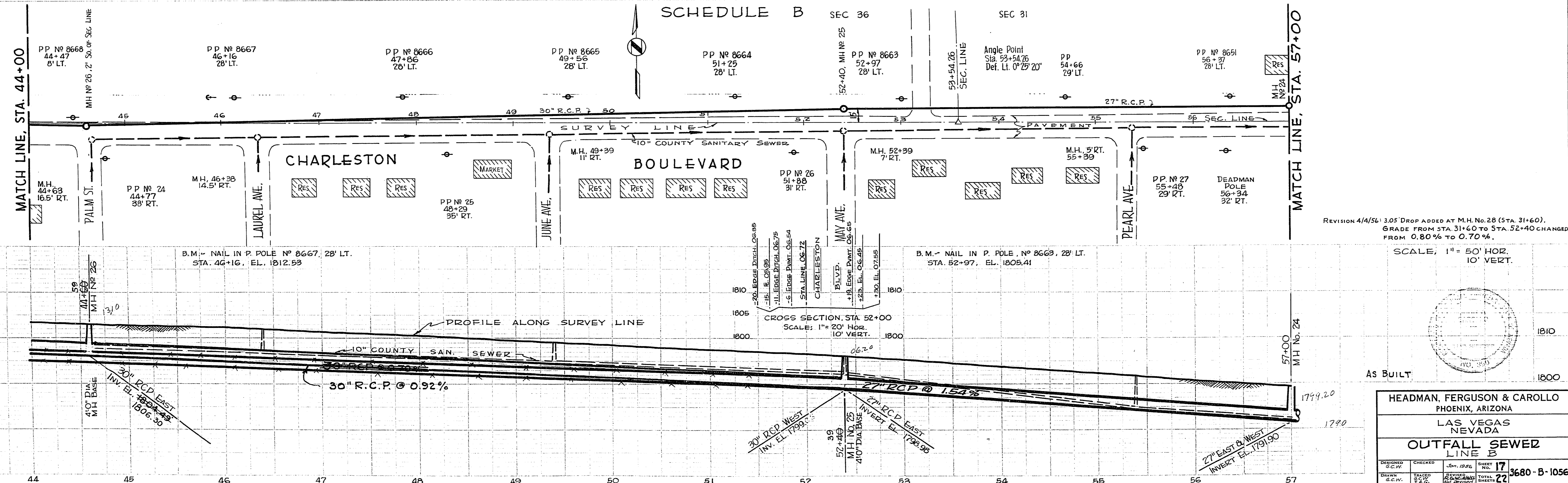


SCHEDULE B

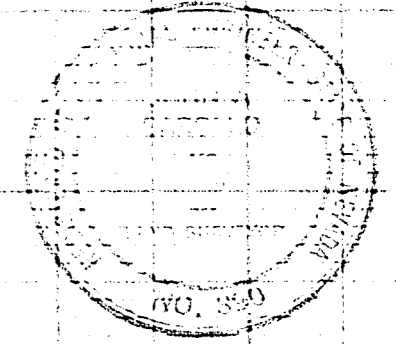


SCHEDULE B



REVISION 4/4/56: 3.05' DROP ADDED AT M.H. NO. 28 (STA. 31+60).  
GRADE FROM STA. 31+60 TO STA. 52+40 CHANGED FROM 0.80% TO 0.70%.

SCALE: 1" = 50' HOR.  
10' VERT.



HEADMAN, FERGUSON & CAROLLO PHOENIX, ARIZONA			
LAS VEGAS NEVADA			
OUTFALL SEWER LINE B			
DESIGNED S.C.W.	CHECKED	DATE	SHEET NO.
		10/1/56	17
DRAWN G.C.W.	TRACED S.P.C.	REVISED DATE	TOTAL SHEETS
			22
			3680-B-1056

14-1-78 307-V242