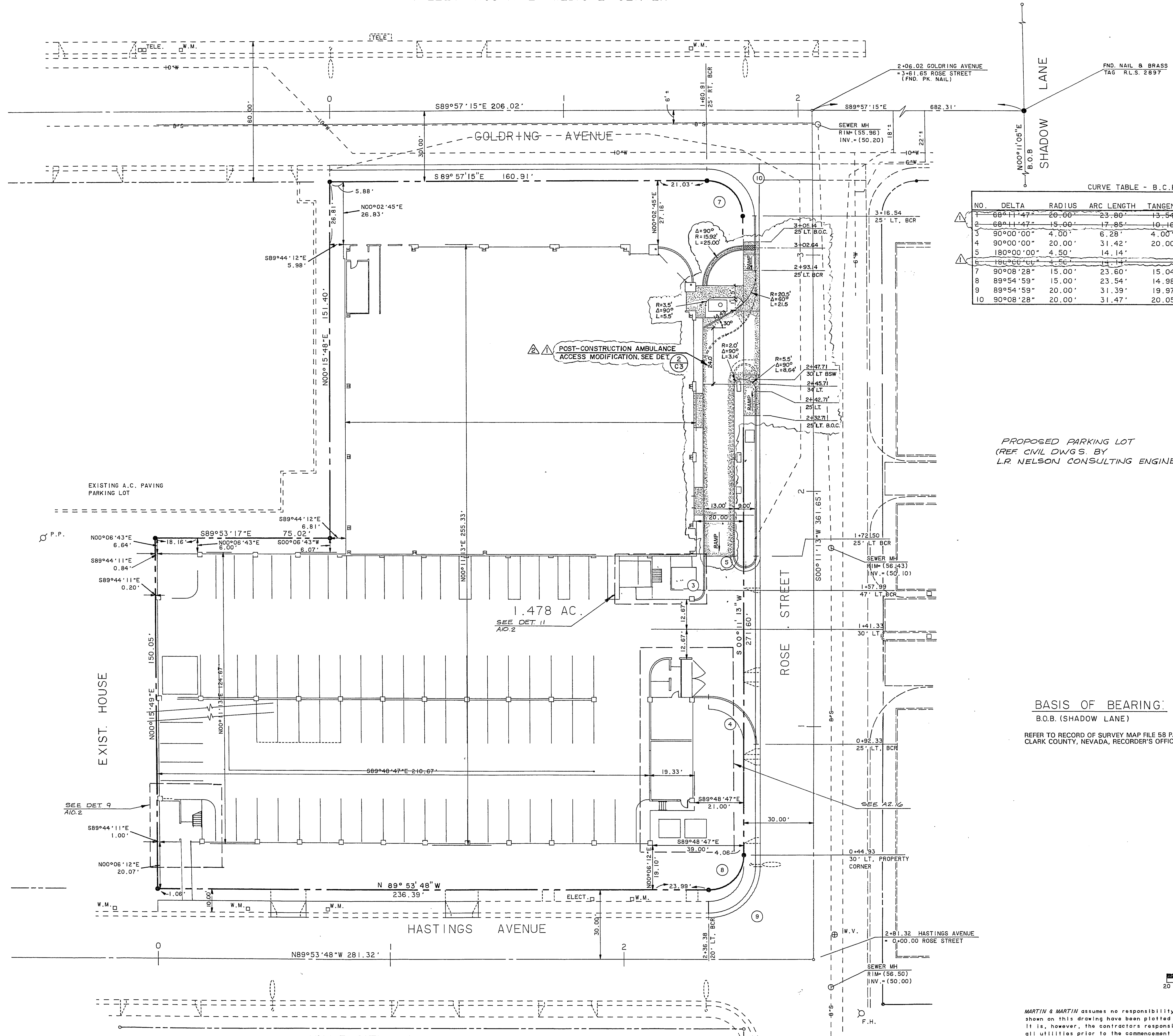


VALLEY HOSPITAL MEDICAL CENTER

project \_\_\_\_\_  
 project manager \_\_\_\_\_  
 designed by \_\_\_\_\_  
 drawn by \_\_\_\_\_



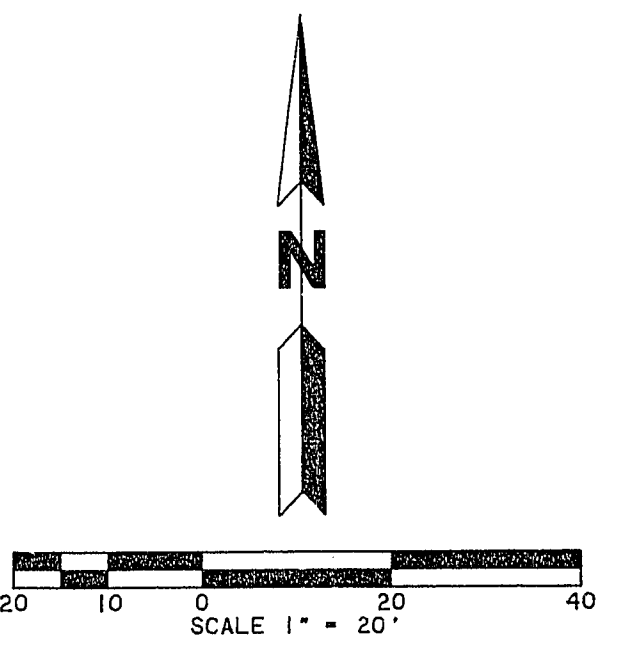
CURVE TABLE - B.C.R.

NO.	DELTA	RADIUS	ARC LENGTH	TANGENT	CHORD	
					BEARING	DIST.
1	68°11'47"	20.00'	23.80'	13.54'	S34°17'06"W	22.42'
2	68°11'47"	15.00'	17.85'	10.16'	S34°17'06"W	16.82'
3	90°00'00"	4.00'	6.28'	4.00'	S45°11'13"W	5.66'
4	90°00'00"	20.00'	31.42'	20.00'	S44°48'47"E	28.28'
5	180°00'00"	4.50'	14.14'			
6	180°00'00"	3.50'	11.11'			
7	90°08'28"	15.00'	23.60'	15.04'	S44°53'01"E	21.24'
8	89°54'59"	15.00'	23.54'	14.98'	S45°08'43"W	21.20'
9	89°54'59"	20.00'	31.39'	19.97'	S45°08'43"W	28.26'
10	90°08'28"	20.00'	31.47'	20.05'	S44°53'01"E	28.32'

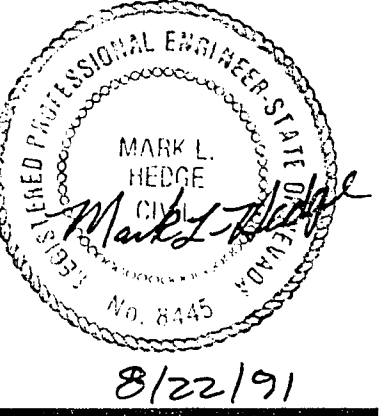
PROPOSED PARKING LOT  
 (REF. CIVIL DWGS. BY  
 L.R. NELSON CONSULTING ENGINEERS)

BASIS OF BEARING:  
 B.O.B. (SHADOW LANE)

REFER TO RECORD OF SURVEY MAP FILE 58 PAGE 68,  
 CLARK COUNTY, NEVADA, RECORDER'S OFFICE.



MARTIN & MARTIN  
 ENGINEERS  
 1701 W. CHARLESTON BLVD.  
 SUITE 420  
 LAS VEGAS, NEVADA 89102  
 PHONE (702) 386-8005



A.B. MEDICAL BUILDING  
 HORIZONTAL CONTROL PLAN

NO.	DESCRIPTION OF REVISIONS	DATE	BY
1	POST-CONSTRUCTION AMBULANCE ACCESS MODIFICATION	4-2-93	T.H.
2	REVISION POST-CONSTRUCTION AMBULANCE ACCESS MOD.	7-22-93	T.H.

date 6-5-91  
 job number 1068  
 design by M. FAKLER  
 drawn by R. YOUNG  
 checked by J. DAVIS

sheet number  
**C2 of 8**

MARTIN & MARTIN assumes no responsibility for utility locations. The utilities shown on this drawing have been plotted from the best available information. It is, however, the contractor's responsibility to field verify the location of all utilities prior to the commencement of any construction.

28-3-108 107-V1940