

**CONSTRUCTION & REMOVAL NOTES**

- CONSTRUCTION ITEMS**
- 1 SAW CUT AND MATCH EXISTING A.C. PAVEMENT
  - 2 CONST. STRUCTURAL SECTION SEE CROSS-SECTION SHT. 2
  - 3 CONST. 24" "L" TYPE C & C PER UNIFORM STD. DWG. 216
  - 4 CONST. RES. DWY WITH MODIFIED APRON (SEE DET. 5A SHT. 11)
  - 5 NOT USED
  - 6 INSTALL LAS VEGAS VALLEY WATER DISTRICT PRE-APPROVED TRAFFIC BEARING WATER METER BOX (1" TYP.)
  - 7 CONST. RES. DWY WITH MODIFIED APRON (SEE DET. 5B SHT. 11)
  - 8 CONST. CONC. WALKWAY TRANSITION (MATCH EXISTING WIDTH)
  - 9 RELOCATE PERMANENT SIGN AND POST
  - 10 RECONSTRUCT DROP INLET (SEE SHT. 10)
  - 11 ADJUST MANHOLE COVER (PLACE CONC. COLLAR) PER USD 408 REVISED 3-1994 (SEE SHT. 2)
  - 12 ADJUST VALVE COVER PER UDACS PLATE #8
  - 13 ADJUST WATER METER BOX TO MATCH NEW TC ELEVATION UDACS PLATE #1 (PLACE CONC. COLLAR)
  - 14 CONST. SPANDREL PER UNIFORM STD. DWG. 228
  - 15 CONST. CONC. SIDEWALK RAMP CASE III PER U.S.D 235
  - 16 CONST. CONC. SIDEWALK PER UNIFORM STD. DWG. 234
  - 17 CONST. CONC. SIDEWALK RAMP PER DETAIL 6 SHT. 11
  - 18 CONST. AC DRIVEWAY TRANSITION (MATCH EX. THICKNESS MIN. 2")

- REMOVAL ITEMS**
- 19 REMOVE EXISTING PAVEMENT AND APPLICABLE BASE
  - 20 REMOVE EXISTING ROLL CURB
  - 21 REMOVE EXISTING FIRE HYDRANT SHEAR PAD
  - 22 REMOVE EXISTING CONCRETE DRIVEWAY
  - 23 REMOVE EXISTING ASPHALT DRIVEWAY
  - 24 REMOVE EXISTING CONCRETE WALKWAY
  - 25 REMOVE EXISTING CURB & GUTTER
  - 26 REMOVE EXISTING SIDEWALK
  - 27 REMOVE EXISTING TREE
  - 28 NOT USED
  - 29 REMOVE EXISTING SPANDREL
  - 30 REMOVE EXISTING DROP INLET
  - 31 REMOVE EXISTING MEDIAN ISLAND

**CURVE DATA**

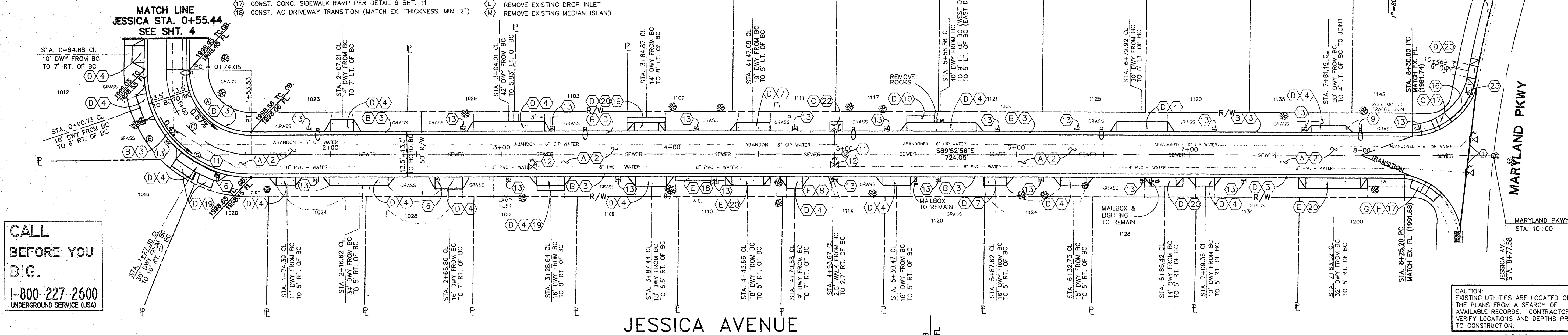
LOCATION	CURVE	RADIUS	LENGTH	TANGENT	DELTA
BC	(1)	36.50'	58.02'	37.19'	91°04'30"
BC	(2)	63.50'	100.94'	64.70'	91°04'30"
CL	(3)	50.00'	79.48'	50.95'	91°04'30"

**BASIS OF BEARINGS**

The centerline of Las Vegas Blvd. from station "B" 1077+00.00 POT to station "B" 1155+93.64 POT (and Fremont Ave.) bears N 27°54'36" E per Nevada Department of Highway Drawings, Proj. No. F005-1(3).

**BENCHMARK**

The elevations for this project were based on the original Topo. done in this area in April 1990, which used CLV BM #1613D9 at the NW corner of Oakley Blvd. and 11th Street. Elevation = 1999.53 The traverse points set at the time of the original Topo. were located and their elevations verified for use in this project.



**CALL BEFORE YOU DIG.**  
1-800-227-2600  
UNDERGROUND SERVICE (USA)

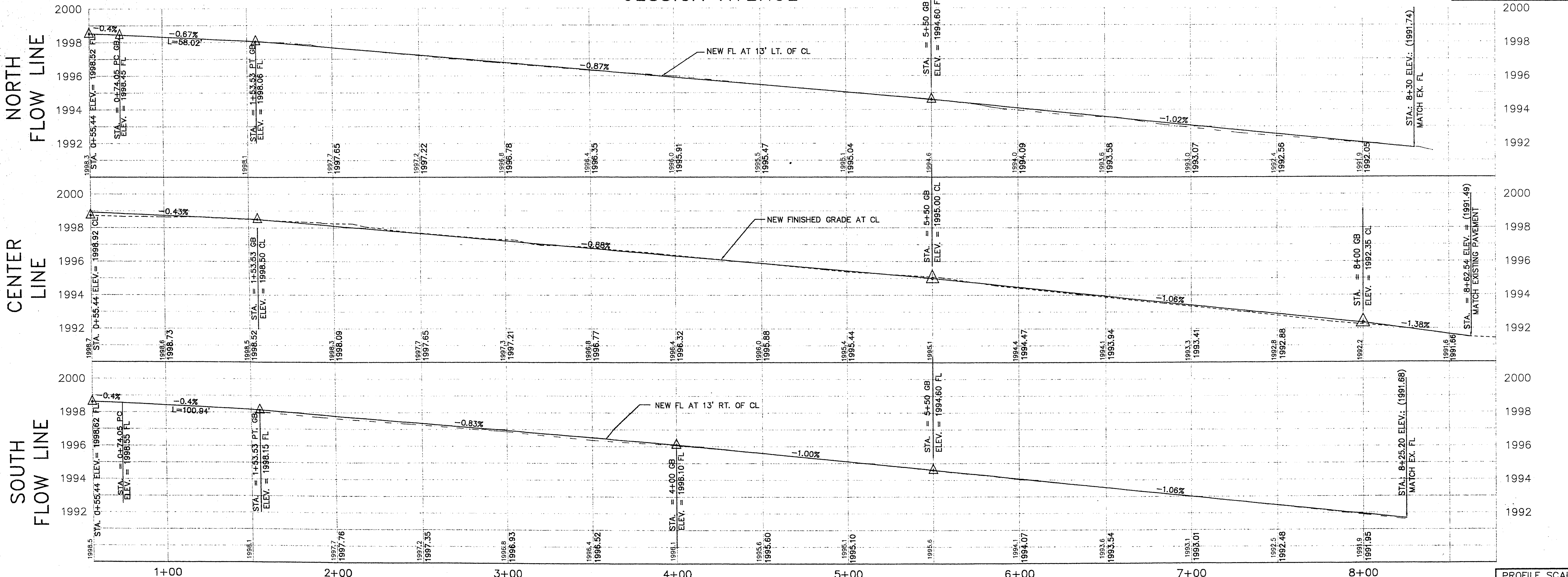
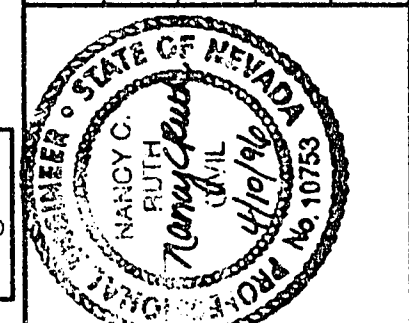
**CAUTION:**  
EXISTING UTILITIES ARE LOCATED ON THE PLANS FROM A SEARCH OF AVAILABLE RECORDS. CONTRACTOR TO VERIFY LOCATIONS AND DEPTHS PRIOR TO CONSTRUCTION.

**REVISIONS**

NO.	DATE	DESCRIPTION

**STREET REHABILITATION DESIGN**

DRAWN BY: K D P  
DESIGNED BY: K D P  
CHECKED BY: NANCY RUTH, P.E.  
JOB NO.: 96.1730.16  
DATE: 4-9-96



PROFILE SCALE:  
HOR: 1" = 30'  
VERT: 1" = 3'

Department of Public Works  
TITLE: HUNTRIGE PHASE IIB  
PLAN AND PROFILE  
JESSICA AVE. - STA. 0+55.44 TO STA. 8+50



DRAWING No. 5  
107-V1918B

HUNTRIGE PHASE IIB

27-3-13