

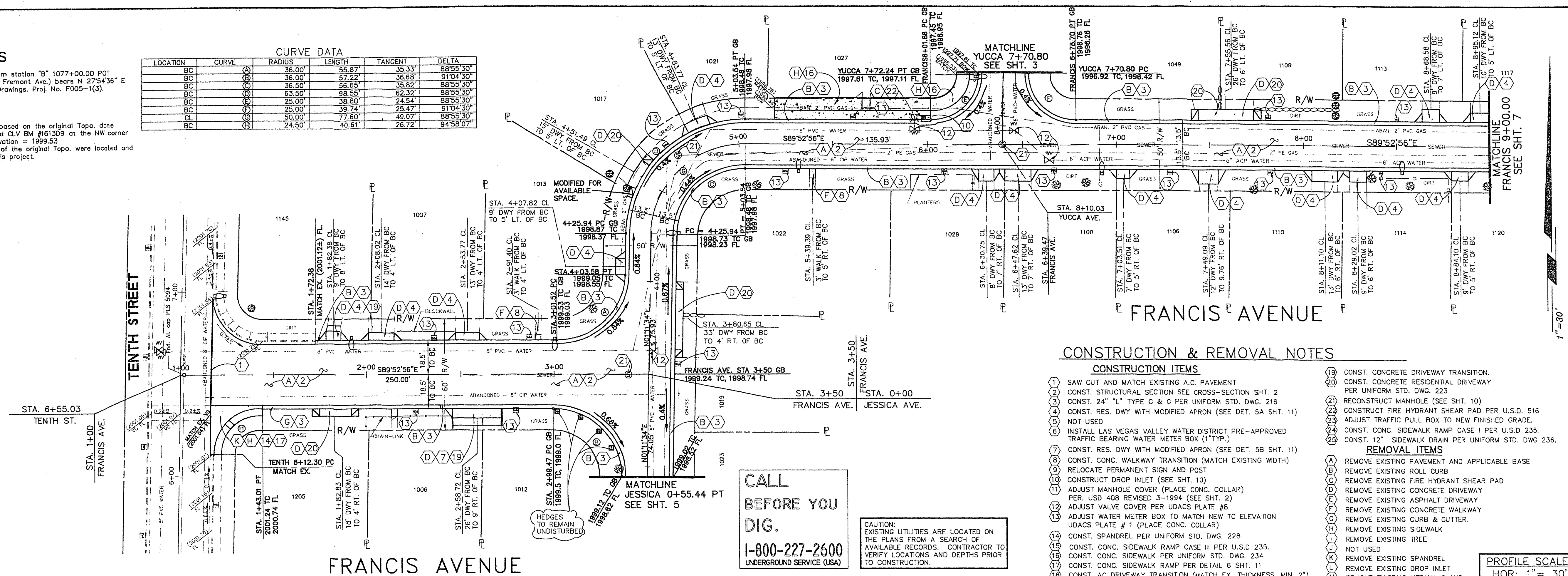
BASIS OF BEARINGS

The centerline of Las Vegas Blvd, from station "B" 1077+00.00 POT to station "B" 1155+33.64 POT (end Fremont Ave.) bears N 27°54'36" E per Nevada Department of Highway Drawings, Proj. No. F005-1(3).

BENCHMARK

The elevations for this project were based on the original Topo. done in this area in April 1980, which used CLV BM #161309 at the NW corner of Oakey Blvd. and 11th Street. Elevation = 1999.53. The traverse points set at the time of the original Topo. were located and their elevations verified for use in this project.

LOCATION	CURVE	RADIUS	LENGTH	TANGENT	DELTA
BC	(A)	36.00	56.87	35.33	88°55'30"
BC	(B)	36.00	57.22	36.68	91°04'30"
BC	(C)	36.50	56.65	35.82	88°55'30"
BC	(D)	63.50	98.65	62.32	88°55'30"
BC	(E)	25.00	38.80	24.54	88°55'30"
CL	(F)	25.00	39.74	25.47	91°04'30"
BC	(G)	50.00	77.60	49.07	88°55'30"
BC	(H)	24.50	40.61	26.72	94°58'07"



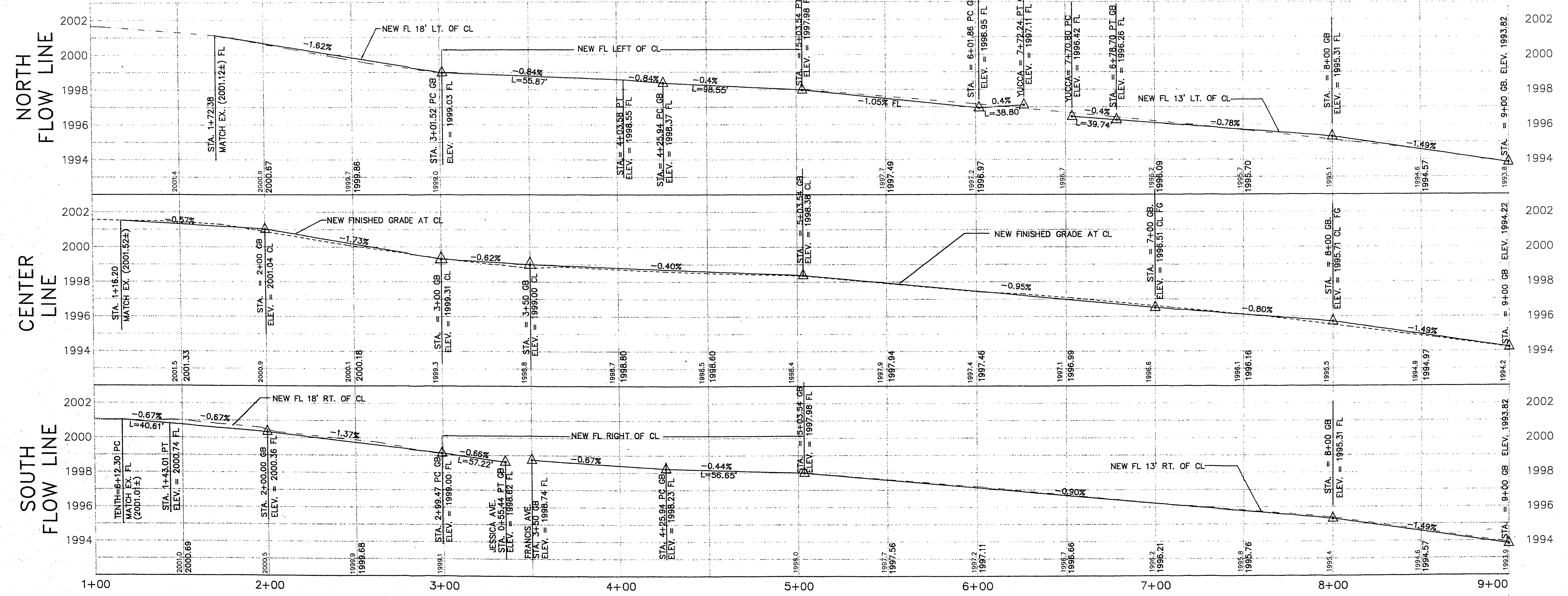
CALL BEFORE YOU DIG.
1-800-227-2600
UNDERGROUND SERVICE (USA)

CAUTION:
EXISTING UTILITIES ARE LOCATED ON THE PLANS FROM A SEARCH OF AVAILABLE RECORDS. CONTRACTOR TO VERIFY LOCATIONS AND DEPTHS PRIOR TO CONSTRUCTION.

CONSTRUCTION & REMOVAL NOTES

- CONSTRUCTION ITEMS**
- (1) SAW CUT AND MATCH EXISTING A.C. PAVEMENT
 - (2) CONST. STRUCTURAL SECTION SEE CROSS-SECTION SHT. 2
 - (3) CONST. 24" "L" TYPE C & G PER UNIFORM STD. DWG. 216
 - (4) CONST. RES. DWY WITH MODIFIED APRON (SEE DET. 5A SHT. 11)
 - (5) NOT USED
 - (6) INSTALL LAS VEGAS VALLEY WATER DISTRICT PRE-APPROVED TRAFFIC BEARING WATER METER BOX (1" TYP.)
 - (7) CONST. RES. DWY WITH MODIFIED APRON (SEE DET. 5B SHT. 11)
 - (8) CONST. CONC. WALKWAY TRANSITION (MATCH EXISTING WIDTH)
 - (9) RELOCATE PERMANENT SIGN AND POST
 - (10) CONSTRUCT DROP INLET (SEE SHT. 10)
 - (11) ADJUST MANHOLE COVER (PLACE CONC. COLLAR)
 - (12) PER. USE 408 REVISED 3-1994 (SEE SHT. 2)
 - (13) ADJUST VALVE COVER PER UDACS PLATE #8
 - (14) ADJUST WATER METER BOX TO MATCH NEW CL ELEVATION UDACS PLATE # 1 (PLACE CONC. COLLAR)
 - (15) CONST. SPANDREL PER UNIFORM STD. DWG. 228
 - (16) CONST. CONC. SIDEWALK RAMP CASE III PER U.S.D 235.
 - (17) CONST. CONC. SIDEWALK PER UNIFORM STD. DWG. 234
 - (18) CONST. CONC. SIDEWALK RAMP PER DETAIL 6 SHT. 11
 - (19) CONST. AC DRIVEWAY TRANSITION (MATCH EX. THICKNESS, MIN. 2")
- REMOVAL ITEMS**
- (20) CONST. CONCRETE DRIVEWAY TRANSITION
 - (21) CONST. CONCRETE RESIDENTIAL DRIVEWAY PER UNIFORM STD. DWG. 223
 - (22) RECONSTRUCT MANHOLE (SEE SHT. 10)
 - (23) CONSTRUCT FIRE HYDRANT SHEAR PAD PER U.S.D. 516
 - (24) ADJUST TRAFFIC PULL BOX TO NEW FINISHED GRADE.
 - (25) CONST. CONC. SIDEWALK RAMP CASE I PER U.S.D 235.
 - (26) CONST. 12" SIDEWALK DRAIN PER UNIFORM STD. DWG 236.
 - (27) REMOVE EXISTING PAVEMENT AND APPLICABLE BASE
 - (28) REMOVE EXISTING ROLL CURB
 - (29) REMOVE EXISTING FIRE HYDRANT SHEAR PAD
 - (30) REMOVE EXISTING CONCRETE DRIVEWAY
 - (31) REMOVE EXISTING ASPHALT DRIVEWAY
 - (32) REMOVE EXISTING CONCRETE WALKWAY
 - (33) REMOVE EXISTING CURB & GUTTER.
 - (34) REMOVE EXISTING SIDEWALK
 - (35) REMOVE EXISTING TREE
 - (36) NOT USED
 - (37) REMOVE EXISTING SPANDREL
 - (38) REMOVE EXISTING DROP INLET
 - (39) REMOVE EXISTING MEDIAN ISLAND

PROFILE SCALE:
HOR: 1" = 30'
VERT: 1" = 3'



REVISIONS

NO.	DATE	DESCRIPTION

STREET REHABILITATION DESIGN

DRAWN BY: K D P
DESIGNED BY: K D P
CHECKED BY: NANCY RUTH, P.E.
JOB NO.: 96.1730.16
DATE: 4-9-96

STATE OF NEVADA
NANCY RUTH, P.E.
Professional Engineer
No. 10753

Department of Public Works
TITLE: HUNTRIDGE PHASE IIB
PLAN AND PROFILE
FRANCIS AVE.- STA. 1+00 TO STA. 9+00

DRAWING No. 4
107-V1918B 11

27-3-12