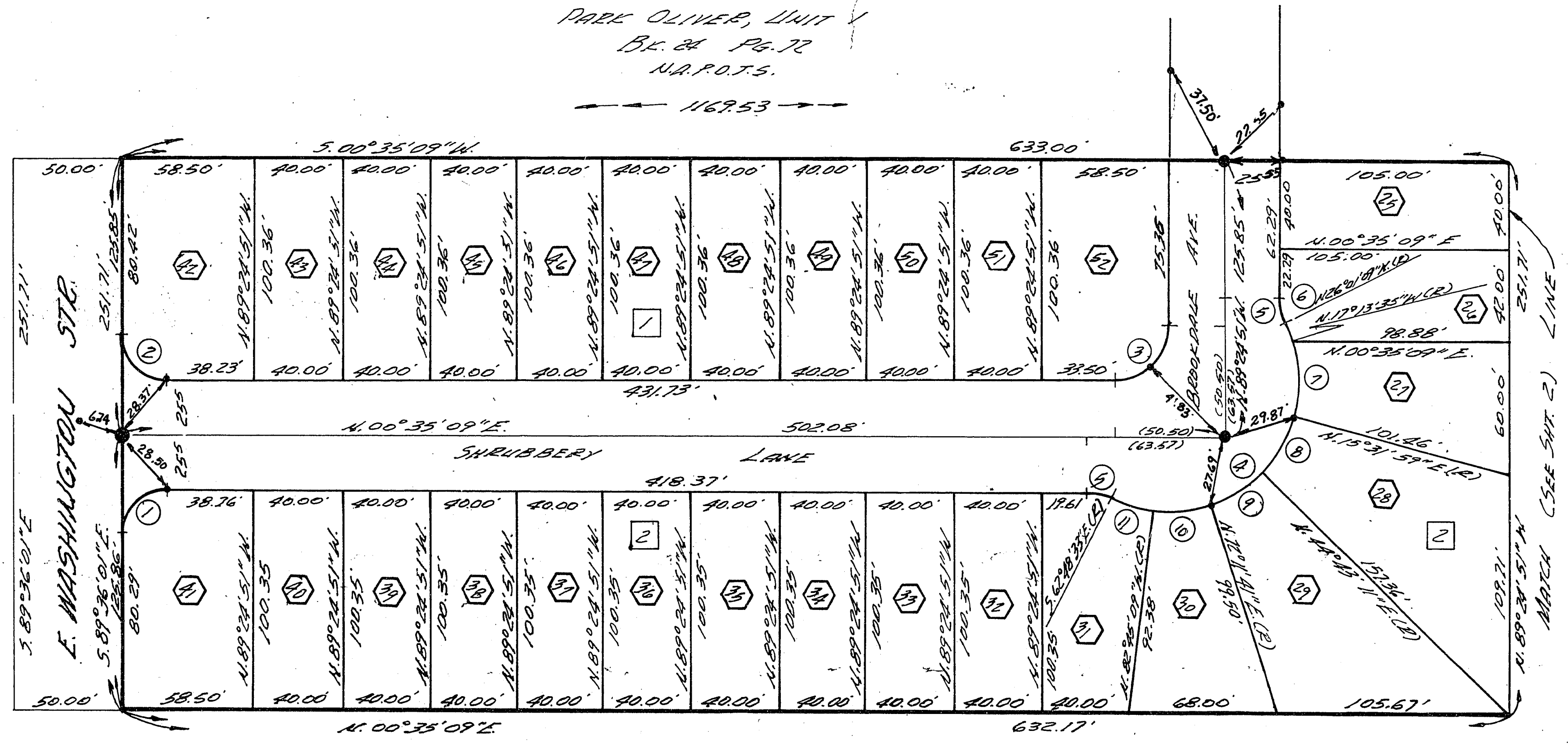


PARK OLIVER, UNIT  
B.L. & P.L. 72  
N.A.P.O.T.S.

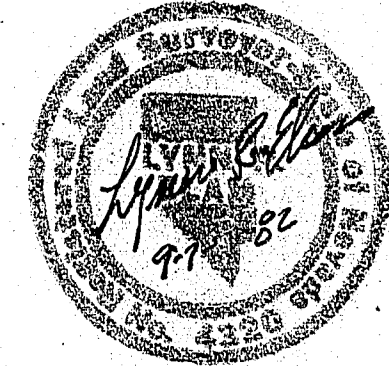


UNDEVELOPED  
N.A.P.O.T.S.

NOTE:  
NO DIRECT VEHICULAR ACCESS  
TO EAST WASHINGTON AVENUE  
FROM ADJUTING LOTS SHALL BE  
ALLOWED.

**SURVEYOR'S CERTIFICATE**

THIS IS TO CERTIFY THAT THE MONUMENTS HAVE BEEN SET  
AND TIES ESTABLISHED AS SHOWN HEREON.



*Lynn R. Elam*  
LYNN R. ELAM, R.L. S. 4320

9-7-82  
DATE

**LEGEND**

- BRASS CAP IN 8" X 18" CONCRETE MONUMENT
- LEAD & BRASS NAIL IN TOP OF CURB