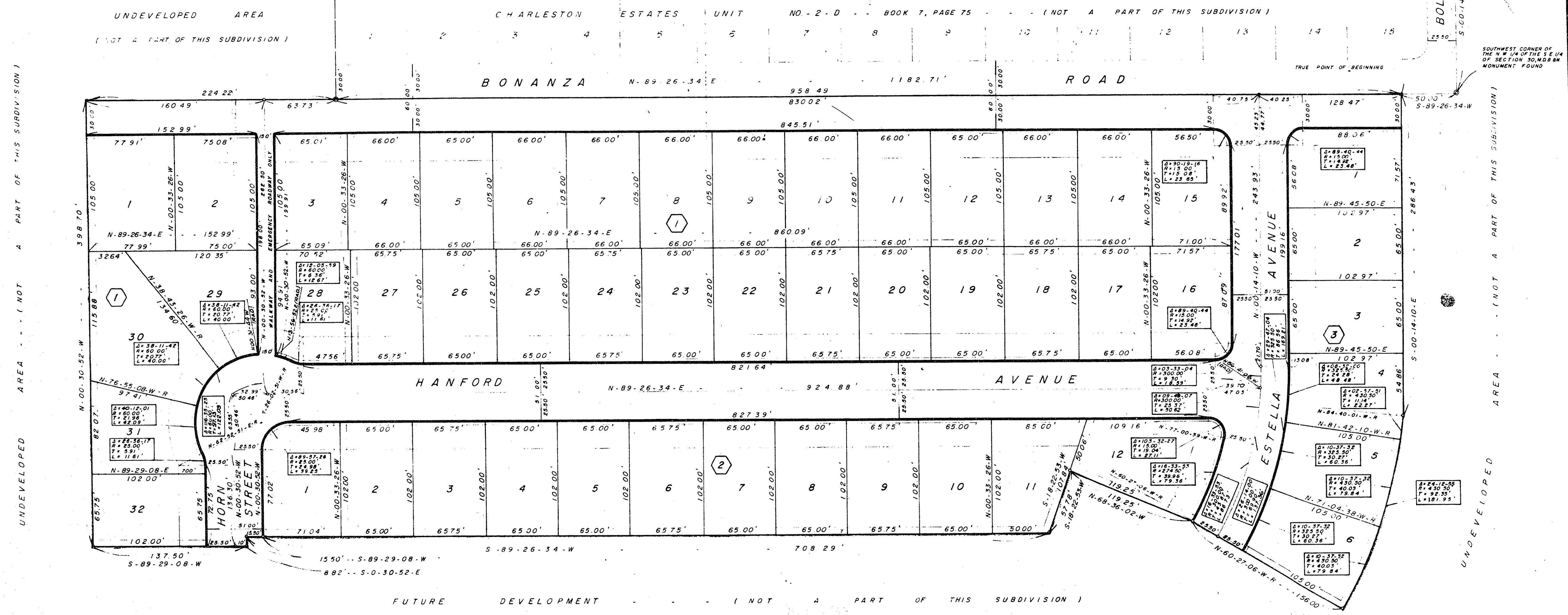


CHARLESTON ESTATES NO. 6-A

A SUBDIVISION OF PART OF THE SOUTHWEST 1/4 OF SECTION 30, T-20-S, R-61-E, M.D.B. & M., CITY OF LAS VEGAS,
COUNTY OF CLARK, STATE OF NEVADA.

CENTER SECTION 30,
T-20-S, R-61-E, M.D.B. & M.
MONUMENT FOUND. 445463



OWNER'S DEDICATION
CHARLESTON HEIGHTS ELECTRIC COMPANY, A NEVADA CORPORATION, DOES HEREBY CERTIFY THAT THEY ARE THE OWNERS OF THE PARCEL OF LAND WHICH IS SHOWN ON THIS FINAL MAP OF CHARLESTON ESTATES NO. 6-A, AND MORE PARTICULARLY DESCRIBED IN THE ENGINEER'S CERTIFICATE HEREON AND HAS CONSENTED TO AND DOES HEREBY CONSENT TO THE PREPARATION AND RECORDATION OF THIS PLAT, AND DOES HEREBY OFFER AND DEDICATE ALL OF THE STREETS, WALKS, AND EASEMENTS AS INDICATED AND OUTLINED FOR THE USE OF THE PUBLIC. FURTHER, CHARLESTON HEIGHTS ELECTRIC COMPANY, A NEVADA CORPORATION, AND OWNER OF THE WITHIN PLATTED LANDS, DOES HEREBY GRANT AND CONVEY TO THE NEVADA POWER COMPANY, ITS SUCCESSORS AND ASSIGNS, THE CENTRAL TELEPHONE COMPANY, ITS SUCCESSORS AND ASSIGNS, A PERMANENT EASEMENT AND RIGHT-OF-WAY AS INDICATED BY THE AREAS MARKED "UTILITY EASEMENT" ON THE WITHIN PLAT, FOR THE CONSTRUCTION AND MAINTENANCE OF ELECTRICAL AND TELEPHONE POLES, LINES AND APPURTENANCES TOGETHER WITH THE RIGHT OF ACCESS THEREIN, NO PART OF THE PARCELS MARKED "NOT A PART OF THIS SUBDIVISION" IS OFFERED FOR DEDICATION DATED THIS 30th DAY OF JUNE, 1964.

CHARLESTON HEIGHTS ELECTRIC COMPANY, A NEVADA CORPORATION.
By: Ernest A. Becker, President

ACKNOWLEDGEMENT
STATE OF NEVADA) SS
COUNTY OF CLARK) SS
ON THIS 30th DAY OF JUNE, 1964, PERSONALLY APPEARED BEFORE ME, Helen W. Blasco, a NOTARY PUBLIC IN AND FOR SAID COUNTY AND STATE, ERNEST A. BECKER, KNOWN TO ME TO BE THE PRESIDENT OF THE CORPORATION THAT EXECUTED THE FOREGOING INSTRUMENT, AND UPON OATH DID DEPOSE THAT HE IS THE OFFICER OF SAID CORPORATION AND THAT THE SEAL AFFIXED TO SAID INSTRUMENT IS THE CORPORATE SEAL OF SAID CORPORATION, THAT THE SIGNATURE AFFIXED TO SAID INSTRUMENT WAS MADE BY THE OFFICER OF SAID CORPORATION AS INDICATED AFTER SAID SIGNATURE, AND THAT SAID CORPORATION EXECUTED THE SAID INSTRUMENT FREELY AND VOLUNTARILY AND FOR THE USES AND PURPOSES THEREIN MENTIONED.

Helen W. Blasco
NOTARY PUBLIC IN AND FOR SAID COUNTY AND STATE
MY COMMISSION EXPIRES 12-17-66

OWNER'S DEDICATION
BOULDERADO WATER COMPANY, A NEVADA CORPORATION, DOES HEREBY CERTIFY THAT THEY ARE THE OWNERS OF THE PARCEL OF LAND WHICH IS SHOWN ON THIS FINAL MAP OF CHARLESTON ESTATES NO. 6-A, AND MORE PARTICULARLY DESCRIBED IN THE ENGINEER'S CERTIFICATE HEREON AND HAS CONSENTED TO AND DOES HEREBY OFFER AND DEDICATE ALL OF THE STREETS, WALKS, AND EASEMENTS AS INDICATED AND OUTLINED FOR THE USE OF THE PUBLIC. FURTHER, BOULDERADO WATER COMPANY, A NEVADA CORPORATION, AND OWNERS OF THE WITHIN PLATTED LANDS, DOES HEREBY GRANT AND CONVEY TO THE NEVADA POWER COMPANY, ITS SUCCESSORS AND ASSIGNS, THE CENTRAL TELEPHONE COMPANY, ITS SUCCESSORS AND ASSIGNS, A PERMANENT EASEMENT AND RIGHT-OF-WAY AS INDICATED BY THE AREAS MARKED "UTILITY EASEMENT" ON THE WITHIN PLAT, FOR THE CONSTRUCTION AND MAINTENANCE OF ELECTRICAL AND TELEPHONE POLES, LINES AND APPURTENANCES TOGETHER WITH THE RIGHT OF ACCESS THEREIN, NO PART OF THE PARCELS MARKED "NOT A PART OF THIS SUBDIVISION" IS OFFERED FOR DEDICATION DATED THIS 30th DAY OF JUNE, 1964.

BOULDERADO WATER COMPANY, A NEVADA CORPORATION.
By: Ernest A. Becker, President

ACKNOWLEDGEMENT
STATE OF NEVADA) SS
COUNTY OF CLARK) SS
ON THIS 30th DAY OF JUNE, 1964, PERSONALLY APPEARED BEFORE ME, Helen W. Blasco, a NOTARY PUBLIC IN AND FOR SAID COUNTY AND STATE, ERNEST A. BECKER, KNOWN TO ME TO BE THE PRESIDENT OF THE CORPORATION THAT EXECUTED THE FOREGOING INSTRUMENT, AND UPON OATH DID DEPOSE THAT HE IS THE OFFICER OF SAID CORPORATION AND THAT THE SEAL AFFIXED TO SAID INSTRUMENT IS THE CORPORATE SEAL OF SAID CORPORATION, THAT THE SIGNATURE AFFIXED TO SAID INSTRUMENT WAS MADE BY THE OFFICER OF SAID CORPORATION AS INDICATED AFTER SAID SIGNATURE, AND THAT SAID CORPORATION EXECUTED THE SAID INSTRUMENT FREELY AND VOLUNTARILY AND FOR THE USES AND PURPOSES THEREIN MENTIONED.

Helen W. Blasco
NOTARY PUBLIC IN AND FOR SAID COUNTY AND STATE
MY COMMISSION EXPIRES 12-17-66

CITY ENGINEER'S CERTIFICATE
I, R. P. SAUER, CITY ENGINEER OF THE CITY OF LAS VEGAS, COUNTY OF CLARK, STATE OF NEVADA, DO HEREBY CERTIFY THAT I HAVE EXAMINED THE FINAL MAP OF CHARLESTON ESTATES NO. 6-A, THAT THE SUBDIVISION SHOWN HEREON IS SUBSTANTIALLY THE SAME AS IT APPEARED ON THE TENTATIVE MAP AND APPROVED ALTERATIONS THEREOF, THAT ALL PROVISIONS OF THE PLANNING AND ZONING ACT OF THE STATE OF NEVADA, AND ANY LOCAL ORDINANCES APPLICABLE AT THE TIME OF APPROVAL OF THE TENTATIVE MAP HAVE BEEN COMPLIED WITH, AND THAT I AM SATISFIED THAT THIS MAP IS TECHNICALLY CORRECT DATED THIS 6th DAY OF APRIL, 1964.

R. P. SAUER, CITY ENGINEER, R. P. No. 396 (Nevada)

ENGINEER'S CERTIFICATE
I, L. BURL SMITH, A DULY REGISTERED LAND SURVEYOR DO HEREBY CERTIFY AS AGENT FOR WESTERN ENGINEERS INC. THAT THIS IS A TRUE AND ACCURATE PLAT OF THE LAND SURVEYED BY ME OR UNDER MY DIRECT SUPERVISION AT THE INSTANCE OF CHARLESTON HEIGHTS ELECTRIC COMPANY, A NEVADA CORPORATION AND BOULDERADO WATER COMPANY, A NEVADA CORPORATION AND BOTH BEING THE OWNERS OF SAID LAND AND LAID OUT INTO LOTS, BLOCKS, WALKS, STREETS AND EASEMENTS AS SHOWN; THAT THE LOCATION OF SAID LOTS, BLOCKS, WALKS, STREETS HAS BEEN DEFINITELY ESTABLISHED IN STRICT ACCORDANCE WITH THE LAW AND AS SHOWN, THAT SAID LOTS, BLOCKS, WALKS, STREETS AND EASEMENTS ARE SITUATED WHOLLY WITHIN A PORTION OF THE SOUTHWEST 1/4 OF SECTION 30, T-20-S, R-61-E, M.D.B. & M., CITY OF LAS VEGAS, COUNTY OF CLARK, STATE OF NEVADA, AND MORE PARTICULARLY DESCRIBED AS FOLLOWS, TO WIT: COMMENCING AT THE CENTER OF SAID SECTION 30, THENCE S-00-14-10-E ALONG THE EAST BOUNDARY OF THE NE 1/4 OF THE SW 1/4 OF SAID SECTION 30, A DISTANCE OF 156.26' TO THE SOUTHEAST CORNER OF SAID NE 1/4, THENCE S-89-26-34-W ALONG THE SOUTH BOUNDARY OF SAID NE 1/4 A DISTANCE OF 500.00' TO THE TRUE POINT OF BEGINNING, THENCE S-00-14-10-E A DISTANCE OF 286.43' TO A NON-TANGENT POINT ON A CURVE CONCAVE TO THE NORTHWEST HAVING A RADIUS OF 430.50', A RADIAL LINE TO SAID POINT BEARS S-84-40-01-E, THENCE SOUTHWESTERLY ALONG SAID CURVE THROUGH A CENTRAL ANGLE OF 241.855 AN ARC LENGTH OF 181.95' TO A POINT, THENCE N-60-27-06-W A DISTANCE OF 196.00' TO A POINT, THENCE N-68-36-02-W A DISTANCE OF 119.25' TO A POINT, THENCE S-18-22-53-W A DISTANCE OF 57.78' TO A POINT, THENCE S-89-26-34-W A DISTANCE OF 708.29' TO A POINT, THENCE S-89-29-08-W A DISTANCE OF 15.50' TO A POINT, THENCE S-00-30-52-E A DISTANCE OF 882' TO A POINT, THENCE S-89-29-08-W A DISTANCE OF 137.50' TO A POINT, THENCE N-00-30-52-W A DISTANCE OF 398.70' TO A POINT, THENCE N-89-26-34-E A DISTANCE OF 1182.71' TO THE TRUE POINT OF BEGINNING, AND CONTAINING 10.6089 ACRES MORE OR LESS, AND THE SUM OF 50 LOTS. THIS SURVEY WAS COMPLETED ON THE 7th DAY OF APRIL, 1964, AND IS TRUE AND COMPLETE AS SHOWN.

APPROVALS
IN CONFORMITY WITH THE TENTATIVE MAP APPROVED THIS 9th DAY OF APRIL, 1964, BY THE PLANNING COMMISSION OF THE CITY OF LAS VEGAS, COUNTY OF CLARK, STATE OF NEVADA.
APPROVED AND ACCEPTED THIS 6th DAY OF MAY, 1964, BY THE BOARD OF COMMISSIONERS OF THE CITY OF LAS VEGAS, COUNTY OF CLARK, STATE OF NEVADA.
By: Mayor
Attest: City Clerk

BASIS OF BEARINGS
BEARINGS ARE BASED ON THE EAST LINE OF CHARLESTON ESTATES UNIT NO. 2-D, AS SHOWN ON PLAT THEREOF ON FILE IN BOOK 7 OF PLATS, PAGE 75, CLARK COUNTY, NEVADA, RECORDS.

SCALE 1" = 50'

LEGEND

- 1-2 LOT NUMBER
- 3 BLOCK NUMBER
- 4 FRONT BUILDING LINE SETBACK 25.00'
- 5 SIDE BUILDING LINE SETBACK 15.00'
- 6 12" UTILITY EASEMENT 6" E SIDE OF R
- 7 3" UTILITY EASEMENT
- 8 CONCRETE MONUMENT SET
- 9 CONCRETE MONUMENT FOUND

445463
RECORDED AT THE REQUEST OF THE
Paul E. Horn, Recorder
DATE 7-10-64 AT 9:14 A.M.
BOOK 10 PAGE 22
OFFICIAL RECORDS BOOK NO 553
CLARK COUNTY NEVADA RECORDS
PAUL E. HORN, RECORDER
FEE \$ 12.00