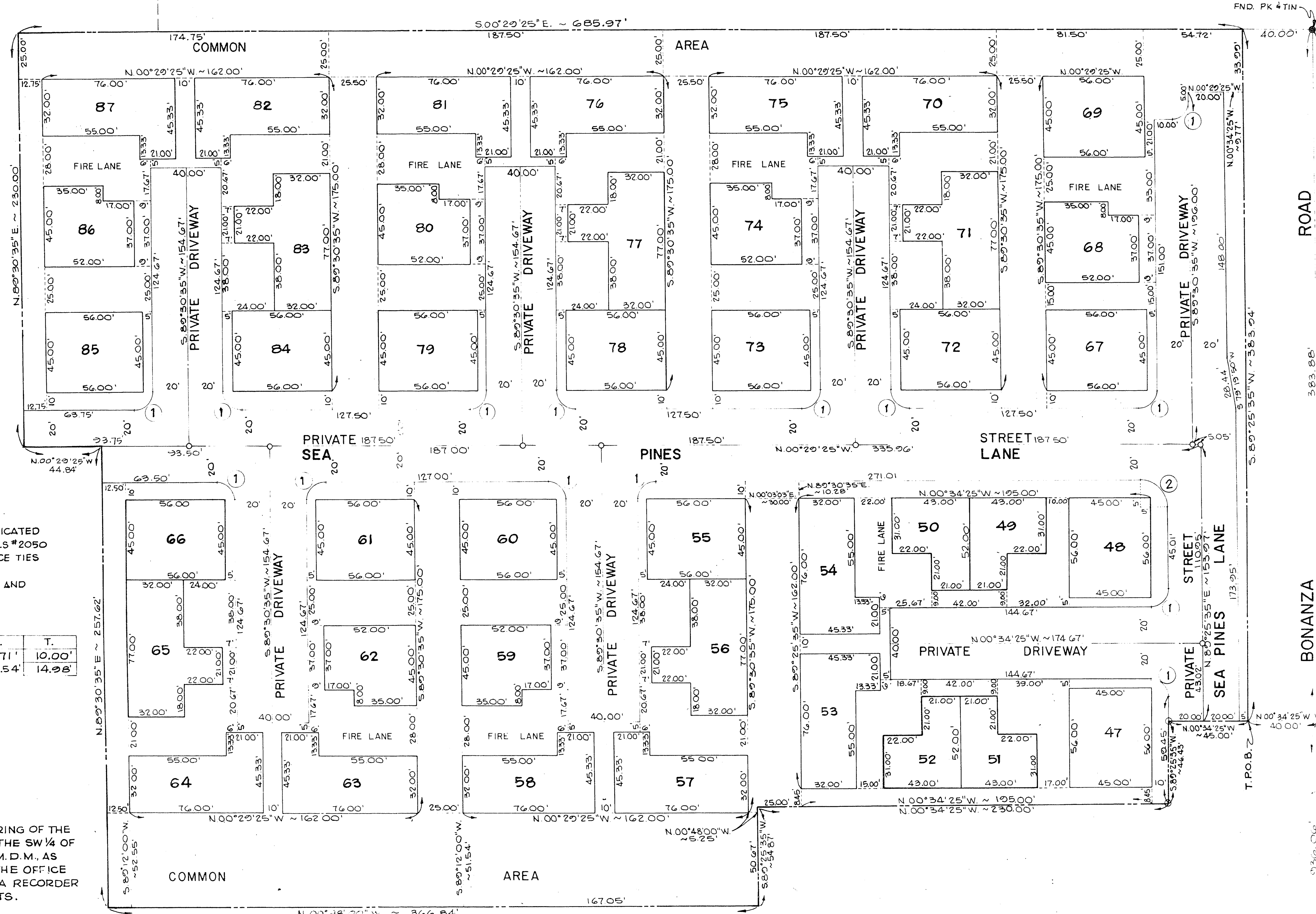


# CHARLESTON ESTATES TRACT 7 C

A PORTION OF THE N.W. 1/4, S.W. 1/4, OF SECTION 30, T.20S., R.61E., M.D.B.M.,  
CITY OF LAS VEGAS CLARK COUNTY, NEVADA

CHARLESTON ESTATES NO.2-B  
BOOK 7 PAGE 71

UNDEVELOPED



### LEGEND

- 47 UNIT NUMBER
- ③ CURVE NUMBER
- LEGAL BOUNDARY
- MONUMENT FOUND AS INDICATED
- SET NAIL AND BRASS TAG RLS #2050 WITH BRASS CAP REFERENCE TIES SET IN TOP OF CURB.
- SET CONCRETE MONUMENT AND BRASS CAP.

### CURVE DATA

NO.	Δ	R.	L.	T.
1	90°00'00"	10.00'	15.71'	10.00'
2	80°55'00"	15.00'	23.54'	14.98'

### BASIS OF BEARING

N 89° 25' 35" E., BEING THE BEARING OF THE SOUTH LINE OF THE NW 1/4 OF THE SW 1/4 OF SECTION 30, T. 20 S., R. 61 E., M. D. M., AS SHOWN BY A MAP ON FILE IN THE OFFICE OF THE CLARK COUNTY, NEVADA RECORDER AS BOOK 23 PAGE 9 OF PLATS.

CHARLESTON ESTATES TRACT 7C

SCALE: 1" = 30'

T. 20 S., R. 61 E.

DECATUR BLVD.

FND. PK. & TIN