

30.17.124  
01587

# BRAVA CONDOMINIUMS UNIT 2

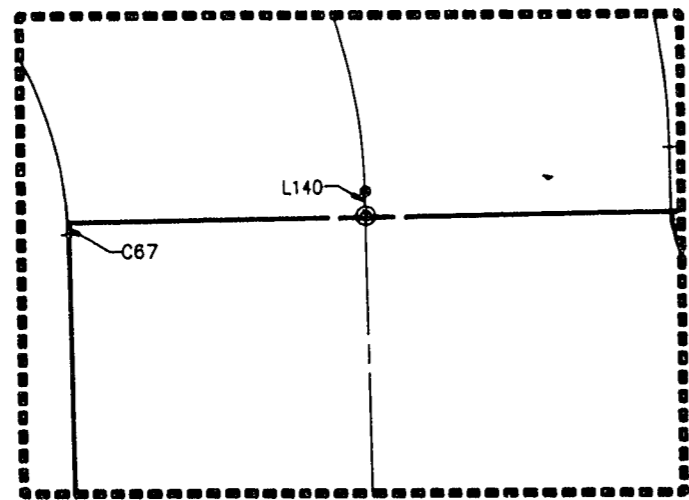
A PORTION OF THE WEST HALF (W 1/2) OF THE SOUTHEAST QUARTER (SE 1/4) OF SECTION 33, TOWNSHIP 20 SOUTH, RANGE 60 EAST, M.D.M., CITY OF LAS VEGAS, CLARK COUNTY, NEVADA.

1/4 CORNER FOUND ALUM. CAP RLS 6030

EXISTING "FORESTCREST - UNIT NO. 2" BOOK 34, PAGE 80

EXISTING "FORESTCREST - UNIT NO. 1" BOOK 28, PAGE 52

SCALE: 1" = 40'



DETAIL

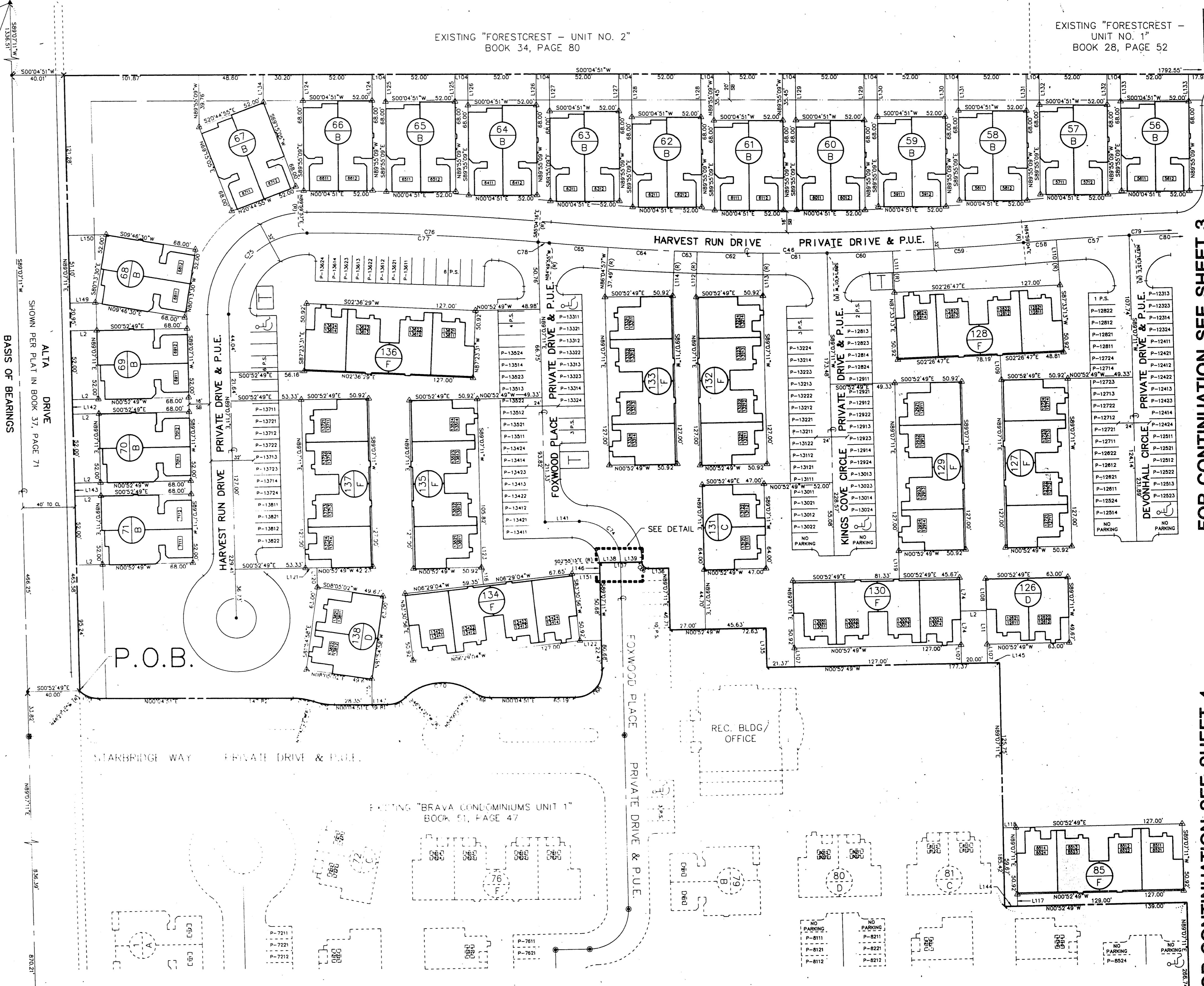
## LEGEND

- ▲ FOUND MONUMENT AS INDICATED PER PLAT IN BOOK 37, PAGE 71
- FOUND TYPE III MONUMENT PLS 8186 PER PLAT IN BOOK 51, PAGE 47
- SET TYPE III MONUMENT PLS 8186
- △ BUILDING THE CORNER
- CS CURVE DATA
- LS LINE DATA
- Ⓟ BUILDING NUMBER (TOTAL THIS MAP = 110) BUILDING TYPE
- Ⓜ UNIT DESIGNATOR (508 UNITS TOTAL) 6(BLDG. NO.)-1(FLOOR NO.)-4(UNIT NO.)
- ♿ HANDICAP SPACES (15 SPACES TOTAL)
- P.U.E. PUBLIC UTILITY EASEMENT
- SETBACK LINE (20' TO BOUNDARY WALL, 16' TO GARAGE ON DUPLEX UNITS)
- BACK OF CURB LINE
- BOUNDARY LINE
- CENTERLINE
- Ⓜ LIMITED COMMON ELEMENT, TOTAL = 372 PARKING FOR UNIT OF SAME NUMBER (8524)
- Ⓜ OPEN PARKING SPACES, TOTAL = 107
- Ⓜ TRASH ENCLOSURES (12 TOTAL)

CEN. 1/4 CORNER FOUND ALUM. CAP RLS 6030

SEC. 33

W.O.# : 780 - 9712	# UNITS : 508	DATE : MAY 1992	BY : DTB
DATE	REVISION DESCRIPTION		DTB
JUNE-10, 1992	REPLACED ALL 'A' BLDG'S W/ 'B' BLDG'S PER AOKI CONST.		



FOR CONTINUATION SEE SHEET 3

FOR CONTINUATION SEE SHEET 4

Book 54 PAGE 46  
4201-2