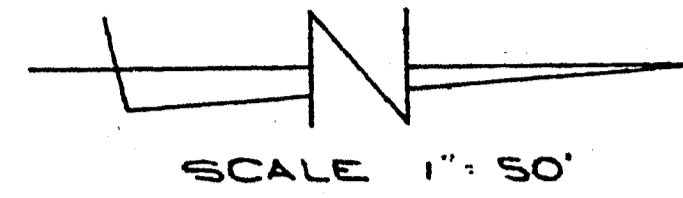


CHARLESTON RAINBOW UNIT NO 17D

BEING A PORTION OF THE NE 1/4 OF SEC. 33, T.20S, R.10E, M.D.M., CLARK COUNTY, NEVADA.

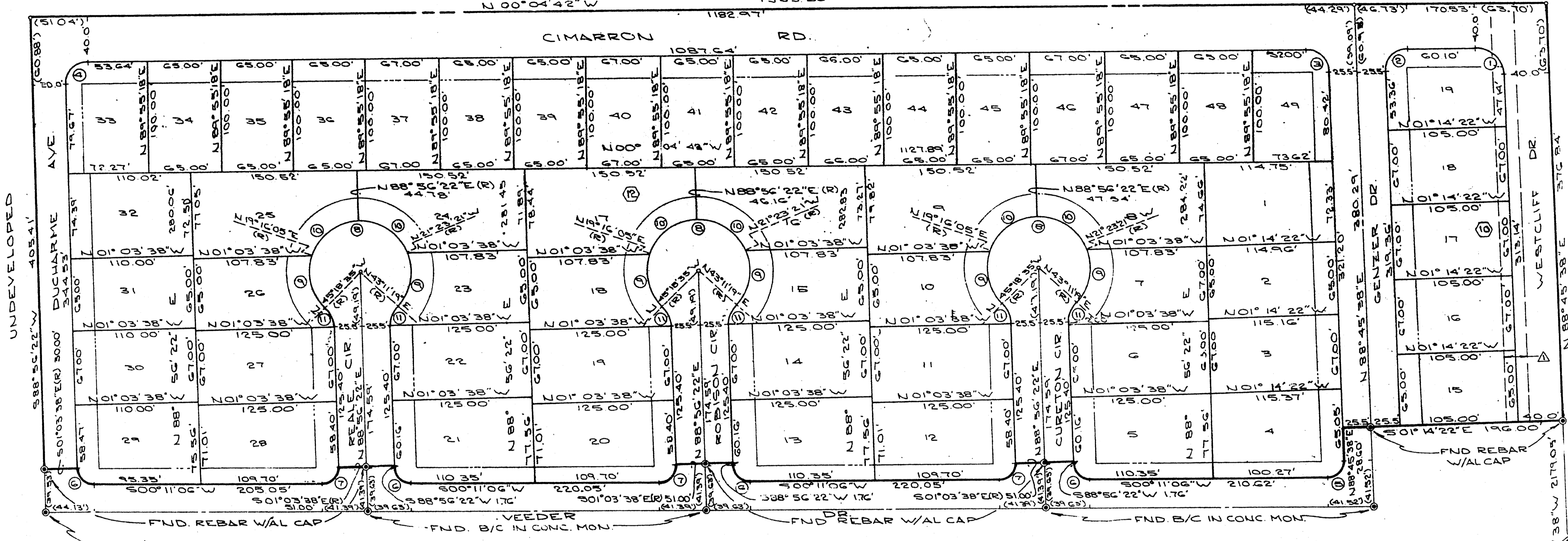
7-12-17



UNDEVELOPED

N 00° 04' 42" W 1182.97'

CIMARRON RD. 1087.64'



CHARLESTON RAINBOW UNIT NO 17C
BOOK 24 PAGE 89

NE COR, NE 1/4, SEC 33,
T.20S, R.10E, M.D.M.
FND US BLM. B/C.

FND 5/8" REBAR W/AL CAP
N 00° 11' 06" E BUFFALO DR.

CURVE DATA

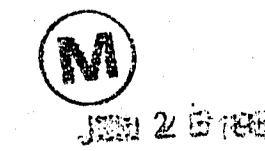
NO	Δ	R	L	T
1	88° 50' 20"	25.00'	38.76'	24.50'
2	91° 09' 40"	20.00'	31.82'	20.41'
3	88° 50' 20"	20.00'	31.01'	19.60'
4	90° 56' 54"	20.00'	31.70'	20.60'
5	91° 25' 28"	15.00'	23.84'	15.98'
6	88° 45' 16"	15.00'	23.24'	14.67'
7	91° 14' 44"	15.00'	23.84'	15.98'
8	268° 23' 54"	45.50'	213.22'	13.33'
9	04° 34' 40"	45.50'	51.28'	28.75'
10	09° 40' 17"	45.50'	55.33'	31.67'
11	45° 14' 57"	25.00'	19.31'	10.16'

LEGEND

- 1 LOT NUMBER
- ① BLOCK NUMBER
- ② CURVE NUMBER
- FND. MONUMENT AS INDICATED, RLS 4046.
- SET REBAR W/AL CAP RLS. 4046.
- SET BRASS CAP IN CONC. MON. RLS. 4046.
- BUILDING SETBACK LINE 20' FRONT 15' SIDE

NOTE

Δ EX NEVADA POWER CO EASEMENT, DOC. NO. 73809 REC. 2/27/56 BEING THE SOUTH 20' OF THE NORTH 50' SEC. 33,



SHT 2 OF 2