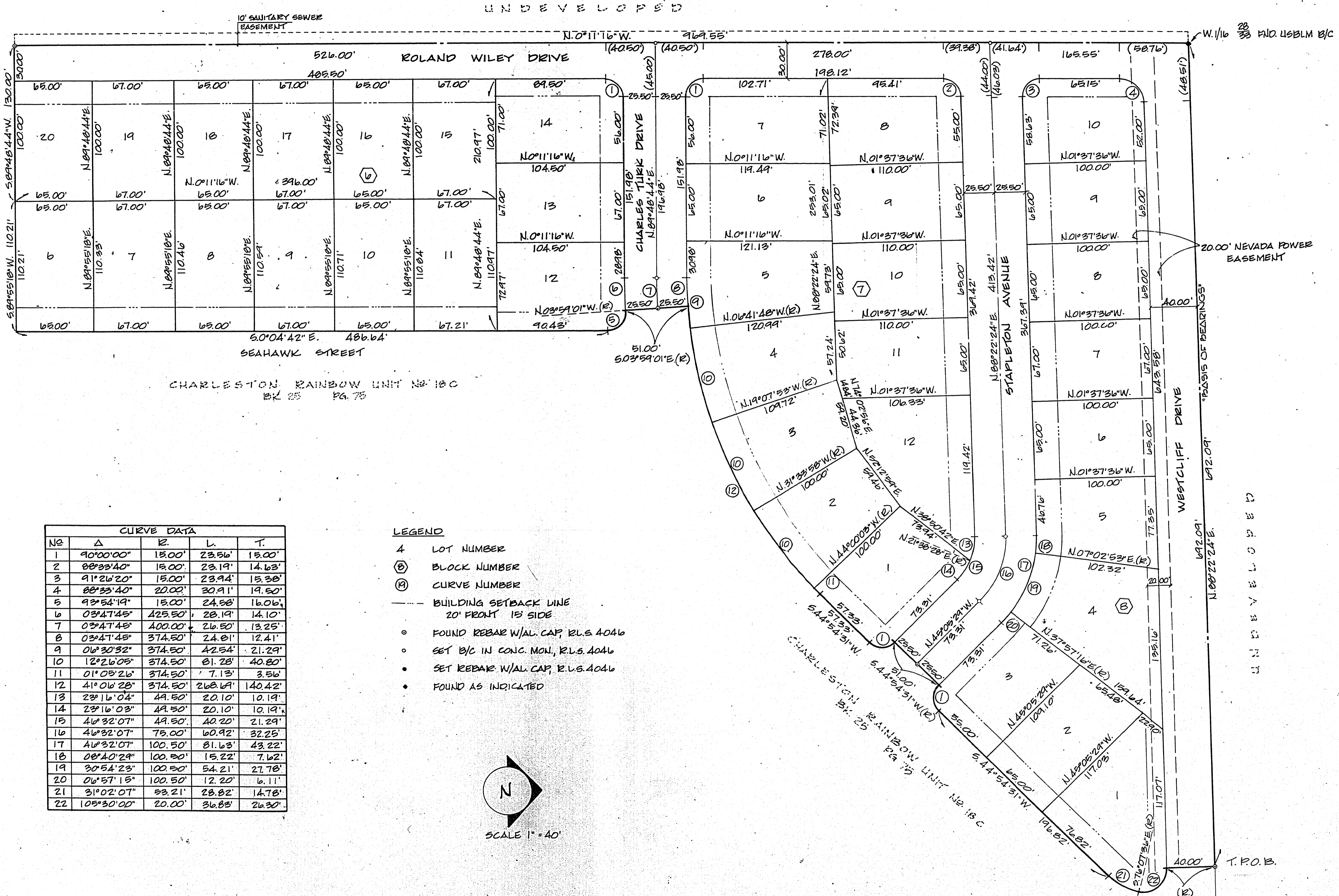


CHARLESTON RAINBOW UNIT No 18D

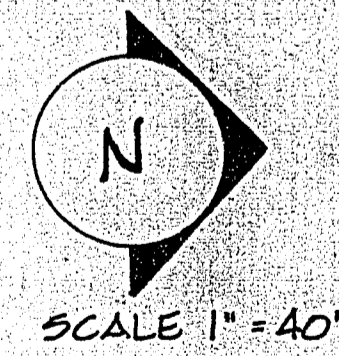
7-120

CHARLESTON RAINBOW UNIT No 18A, EX. 25 PG. 33



CURVE DATA				
NO	Δ	R	L	T
1	90°00'00"	15.00'	23.56'	15.00'
2	88°33'40"	15.00'	23.19'	14.63'
3	91°26'20"	15.00'	23.94'	15.38'
4	88°33'40"	20.00'	30.91'	19.50'
5	93°54'19"	15.00'	24.58'	16.06'
6	03°47'45"	425.50'	28.19'	14.10'
7	03°47'45"	100.00'	26.50'	13.25'
8	03°47'45"	374.50'	24.81'	12.41'
9	06°30'32"	374.50'	42.54'	21.29'
10	12°26'05"	374.50'	81.28'	40.80'
11	01°05'26"	374.50'	7.13'	3.56'
12	41°06'28"	374.50'	268.69'	140.42'
13	23°16'04"	49.50'	20.10'	10.19'
14	23°16'03"	49.50'	20.10'	10.19'
15	46°32'07"	49.50'	40.20'	21.29'
16	46°32'07"	75.00'	60.92'	32.25'
17	46°32'07"	100.50'	81.63'	43.22'
18	08°10'29"	100.50'	15.22'	7.62'
19	30°54'23"	100.50'	54.21'	27.78'
20	06°57'16"	100.50'	12.20'	6.11'
21	31°02'07"	83.21'	28.82'	14.78'
22	105°30'00"	20.00'	36.85'	26.30'

- LEGEND**
- 4 LOT NUMBER
 - ⊕ BLOCK NUMBER
 - Ⓢ CURVE NUMBER
 - BUILDING SETBACK LINE
20' FRONT 15' SIDE
 - FOUND REBAR W/AL. CAP. R.L.S. 4046
 - SET B/C IN CONC. MON. R.L.S. 4046
 - SET REBAR W/AL. CAP. R.L.S. 4046
 - FOUND AS INDICATED



NOTE: VEHICULAR ACCESS FROM WESTCLIFF DRIVE TO THE REAR OF LOTS 1, 4, 5, 6, 7, 8, 9 AND 10, BLOCK 8 IS PROHIBITED.

