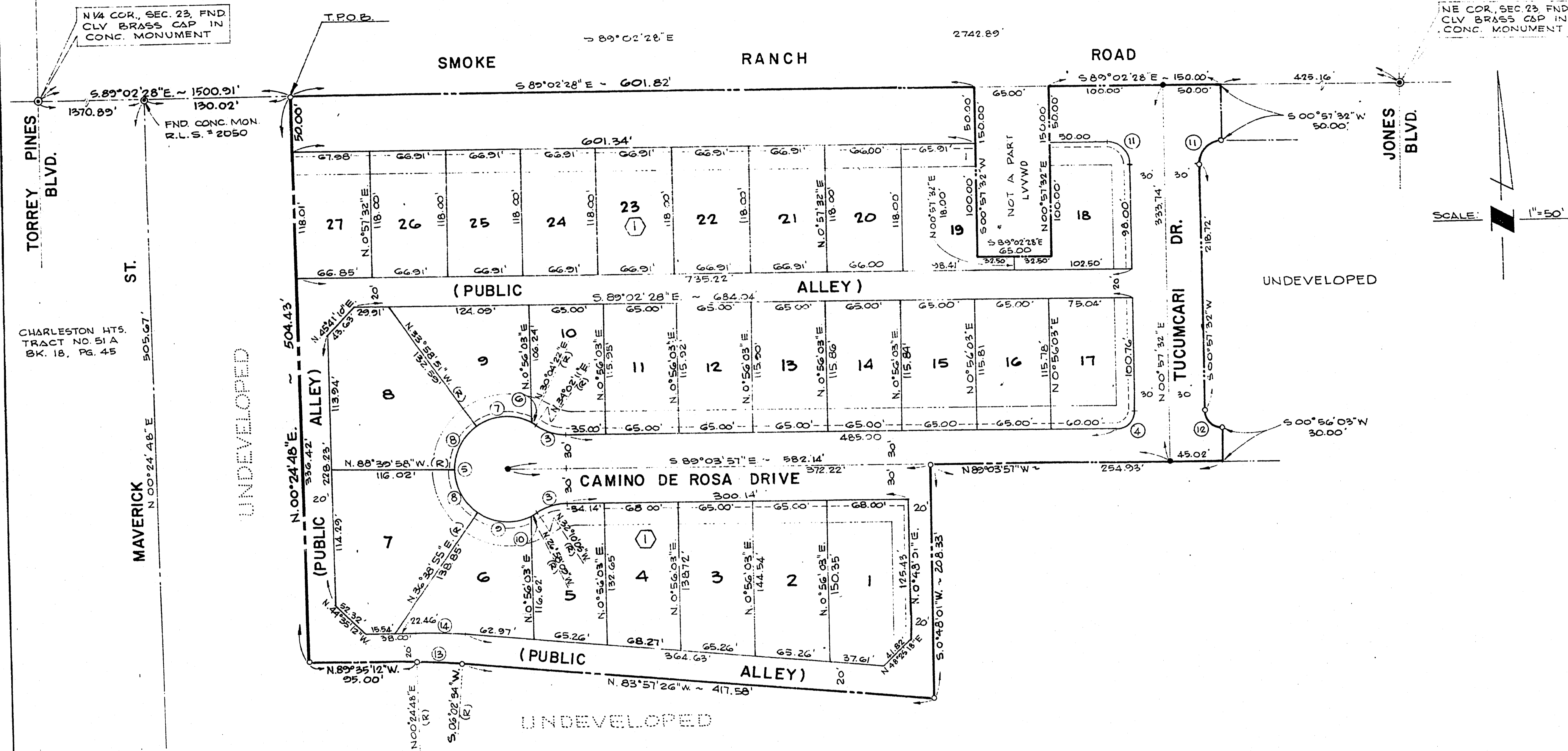


# CHARLESTON HEIGHTS TRACT NO. 51-F1

A PORTION OF THE NE 1/4 OF SECTION 23, T. 20 S., R. 60 E. MDM.  
CITY OF LAS VEGAS CLARK COUNTY, NEVADA

6-12-76  
793928



SCALE: 1" = 50'

**CURVE DATA**

No.	Δ	R.	L.	T.
3	33°06'08"	50.00	28.89	14.86'
4	89°58'31"	15.00	23.56	14.93'
5	242°12'16"	45.50	195.52	-
6	05°57'49"	45.50	3.15	1.57'
7	64°03'13"	45.50	50.87	28.46'
8	54°41'07"	45.50	43.43	23.53'
9	63°37'04"	45.50	50.52	28.22'
10	05°11'56"	45.50	4.13	2.07'
11	90°00'00"	20.00	31.42	20.00'
12	90°01'29"	15.00	23.57	15.01'
13	05°37'46"	445.50	41.81	20.92'
14	05°37'46"	445.50	43.77	21.90'

**LEGEND**

- 10 LOT NUMBER
- ① BLOCK NUMBER
- ⑤ CURVE NUMBER
- SET BACK:  
20' FRONT YARD  
15' SIDE YARD CORNER
- 5' UTILITY EASEMENT
- FND. CONC. MON. AS SHOWN
- SET CONC. MON. PER C.L.V. STANDARDS
- SET 5/8" REBAR AND ALUM. CAP

**BASIS OF BEARING**

S. 89°02'28" E. BEING THE BEARING OF THE NORTH LINE OF THE NORTHEAST QUARTER OF SECTION 23, T. 20 S., R. 60 E., MDM, AS SHOWN BY A MAP ON FILE IN THE OFFICE OF THE CLARK COUNTY RECORDER AS BOOK 18, PAGE 45 OF PLATS.