

6-12-2

**CHARLESTON HEIGHTS TRACT 63 - UNIT 4**  
 A POR. OF THE SW1/4 OF THE SE1/4 OF SEC. 3, T. 20 S., R. 60 E., M.D.M.,  
 CITY OF LAS VEGAS, CLARK COUNTY, NEVADA.

**CURVE TABLE**

CURVE	ARC	DELTA	RADIUS	TAN LENGTH
C1	31.42	90°00'00"	20.00	20.00
C2	22.50	86°14'23"	15.00	14.05
C3	20.21	1°04'55"	1890.00	15.11
C4	40.01	1°25'58"	1890.00	20.01
C5	45.00	1°36'41"	1890.00	22.50
C6	40.01	1°25'58"	1890.00	20.01
C7	45.07	1°04'55"	1890.00	22.53
C8	39.13	2°04'04"	1890.00	19.56
C9	40.22	1°26'25"	1890.00	20.31
C10	26.61	0°57'19"	1890.00	13.30
C11	13.05	17°11'37"	45.50	6.88
C12	32.82	41°04'36"	45.50	17.02
C13	31.31	30°25'54"	45.50	16.31
C14	31.31	30°25'54"	45.50	16.31
C15	32.80	41°04'36"	45.50	17.02
C16	43.73	55°04'15"	45.50	23.72
C17	28.00	64°09'50"	25.00	15.67
C18	9.93	0°20'41"	1850.00	4.56
C19	45.13	1°24'52"	1850.00	22.27
C20	40.05	1°23'27"	1850.00	20.03
C21	45.01	1°33'47"	1850.00	22.51
C22	40.00	1°22'29"	1850.00	20.00
C23	40.01	1°23'27"	1850.00	20.01
C24	26.84	0°55'55"	1850.00	13.42
C25	24.50	53°34'46"	15.00	15.97
C26	31.42	90°00'00"	20.00	20.00
C27	29.48	78°14'06"	15.00	12.20
C28	34.77	2°48'21"	710.00	17.38
C29	40.37	3°15'29"	710.00	20.19
C30	45.13	3°38'32"	710.00	22.57

**CURVE TABLE (con't)**

CURVE	ARC	DELTA	RADIUS	TAN LENGTH
C31	40.01	3°13'43"	710.00	20.31
C32	45.05	3°30'48"	710.00	22.53
C33	45.77	3°39'12"	710.00	22.84
C34	40.58	3°16'29"	710.00	20.30
C35	35.09	2°53'46"	710.00	17.36
C36	39.40	3°10'45"	710.00	19.70
C37	5.87	0°47'48"	710.00	4.94
C38	25.00	32°36'40"	45.50	13.31
C39	30.00	37°46'39"	45.50	15.57
C40	30.00	37°46'39"	45.50	15.57
C41	30.00	37°46'39"	45.50	15.57
C42	30.00	37°46'39"	45.50	15.57
C43	33.86	42°38'37"	45.50	17.76
C44	18.92	21°18'18"	45.50	8.56
C45	27.45	62°54'15"	25.00	15.29
C46	10.00	0°00'28"	780.00	0.00
C47	40.88	3°04'54"	780.00	20.44
C48	43.52	3°25'24"	780.00	22.77
C49	40.18	3°01'45"	780.00	20.15
C50	40.84	3°01'06"	780.00	20.02
C51	45.01	3°23'26"	780.00	22.51
C52	45.11	3°01'25"	780.00	20.08
C53	45.37	3°25'15"	780.00	22.69
C54	26.13	1°58'12"	780.00	13.07
C55	26.32	1°00'20"09"	15.00	18.03
C56	19.40	13°05'33"	45.50	5.22
C57	23.56	90°00'00"	15.00	15.00

**COURSE TABLE**

LINE	BEARING	DISTANCE
L1	N 80°18'02" E	17.21
L2	S 81°57'45" E (R) PRC	20.50
L3	N 72°13'32" E (R) PRC	20.50
L4	N 5°18'18" E	15.00
L5	N 75°48'12" E (R)	18.00
L6	N 38°25'46" W (R)	16.00
L7	N 38°10'09" E (R)	18.39
L8	N 37°23'01" W (R)	18.39
L9	N 75°50'48" E (R)	16.64
L10	N 75°09'48" W (R)	12.84
L11	S 0°21'00" E	2.00

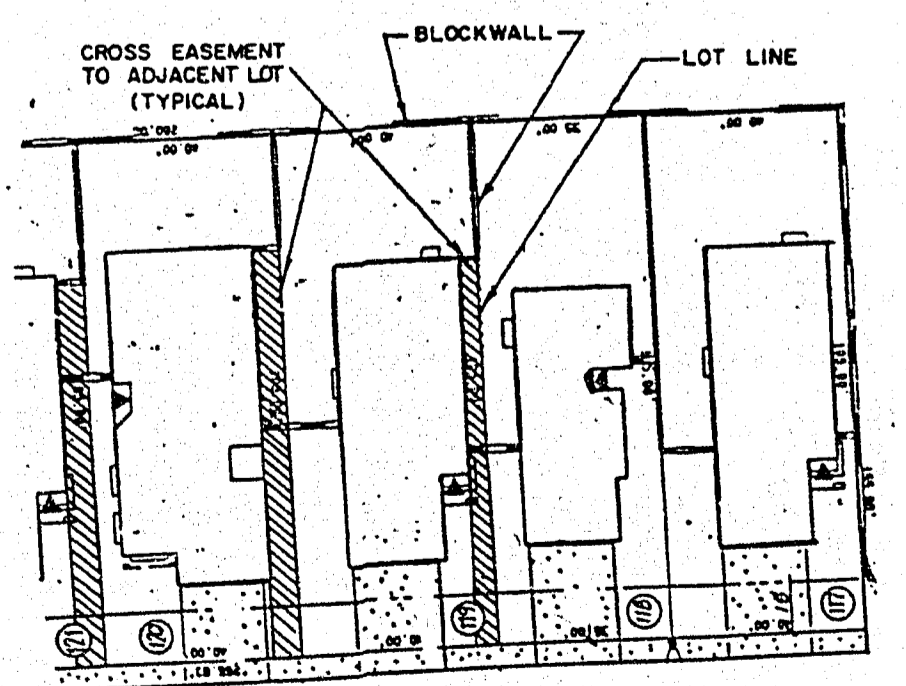
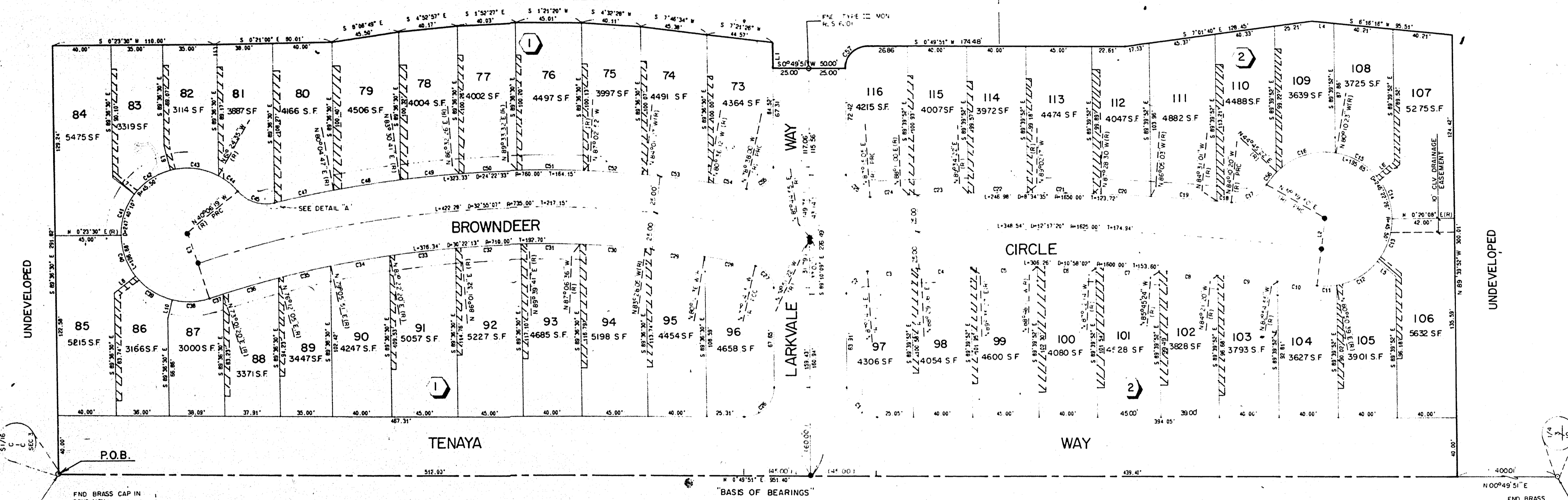
**LEGEND**

- P.O.B. POINT OF BEGINNING
- 8 BLOCK NUMBER / TOTAL LOTS = 44
- ⊙ LOT NUMBER
- CI CURVE NUMBER
- BUILDING SETBACK LINE MINIMUMS:  
FRONT = 10' / CORNER = 10'
- NOTE: FACE OF GARAGE IS TO BE A MINIMUM OF 16' FROM FRONT PROPERTY LINE.
- FOUND POINT AS INDICATED
- SET TYPE III MONUMENT PER CLARK COUNTY IMPROVEMENT STANDARDS, REVISED APRIL, 1966, L.S. 6201
- LI COURSE NUMBER
- (R) RADIAL LINE

SCALE: 1" = 40'

CHARLESTON HEIGHTS TRACT 63-UNIT 3  
BK. PG.

AMENDED CHARLESTON HEIGHTS TRACT 63-UNIT 1  
BK. 41 PG. 92



NOTE:  
 THE CROSS EASEMENTS SHOWN HEREON ILLUSTRATE THE CONCEPT INVOLVED AND ARE SUBJECT TO CONSTRUCTION VARIATION. THE FINAL LOCATION OF THE EASEMENTS SHALL BE DEFINED BY A LEGAL DESCRIPTION BASED ON ACTUAL CONSTRUCTION & INCORPORATED AS PART OF THE DEED FOR EACH LOT.

ACT	DATE	BY	ACTION
01	7-5-81	MB	ADDED DRAINAGE EASEMENT BET. LOTS 106 & 107
2	1-16-90	KHJ	REV BOUNDARY & LOT LINE BETWEEN LOTS 101 & 102, BLK 2
3	2-1-10	KHJ	ADD CROSS ESMT.

W.O. 3179-4  
SHEET 2 OF 2

BK 45, PG. 34  
1040-63-4