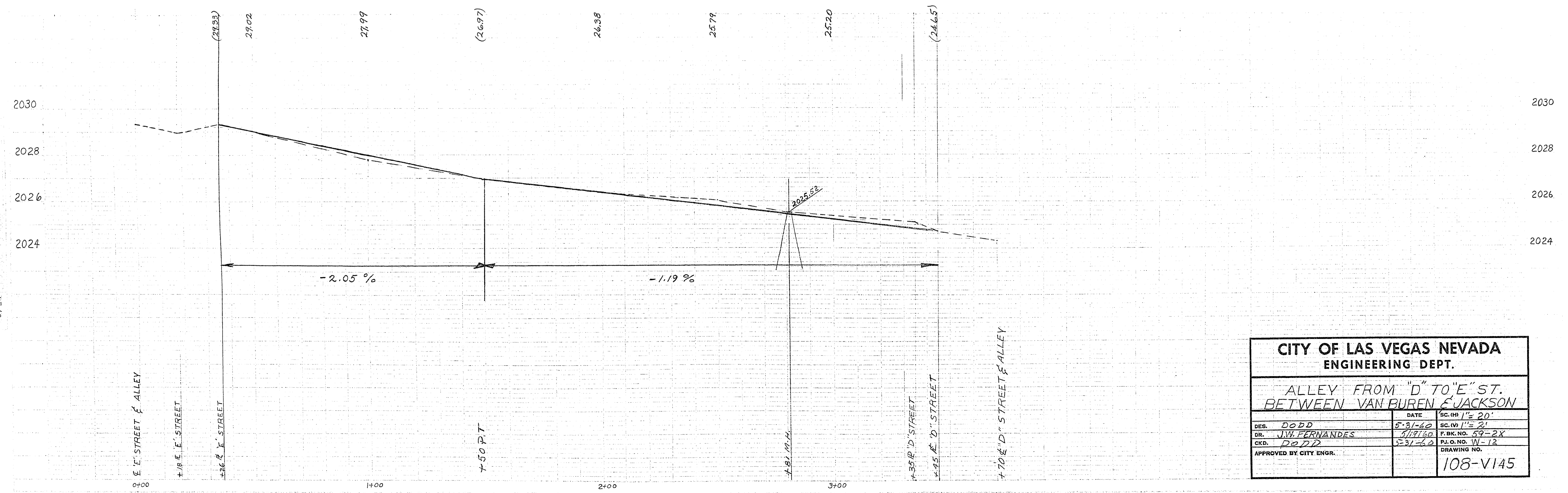
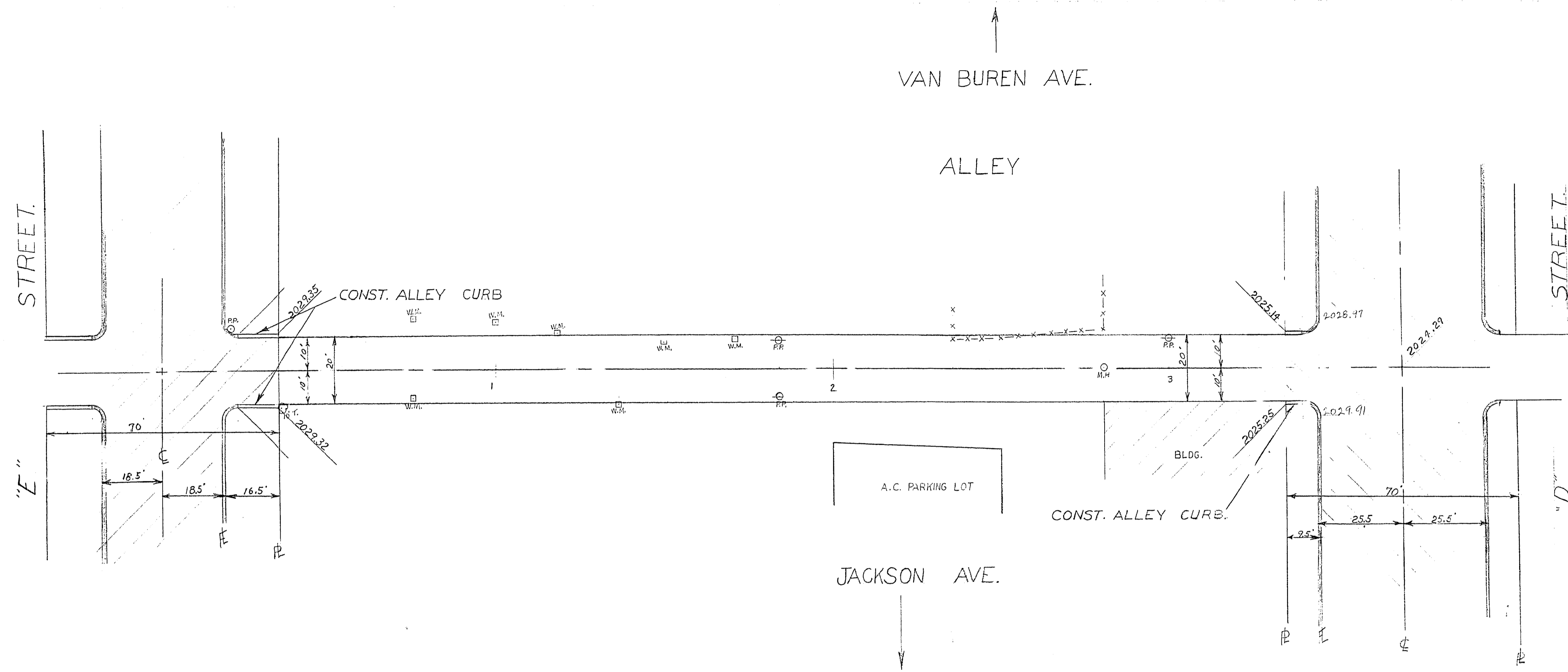


3-5-31



CITY OF LAS VEGAS NEVADA ENGINEERING DEPT.			
ALLEY FROM "D" TO "E" ST. BETWEEN VAN BUREN & JACKSON			
DES.	DATE	SC. (H) 1" = 20'	
DODD	5-31-60	SC. (V) 1" = 2'	
DR. J.W. FERNANDES	5/19/60	P. BK. NO. 59-2X	
CKD. DODD	5-31-60	P.L.O. NO. W-12	
APPROVED BY CITY ENGR.			DRAWING NO. 108-VI45