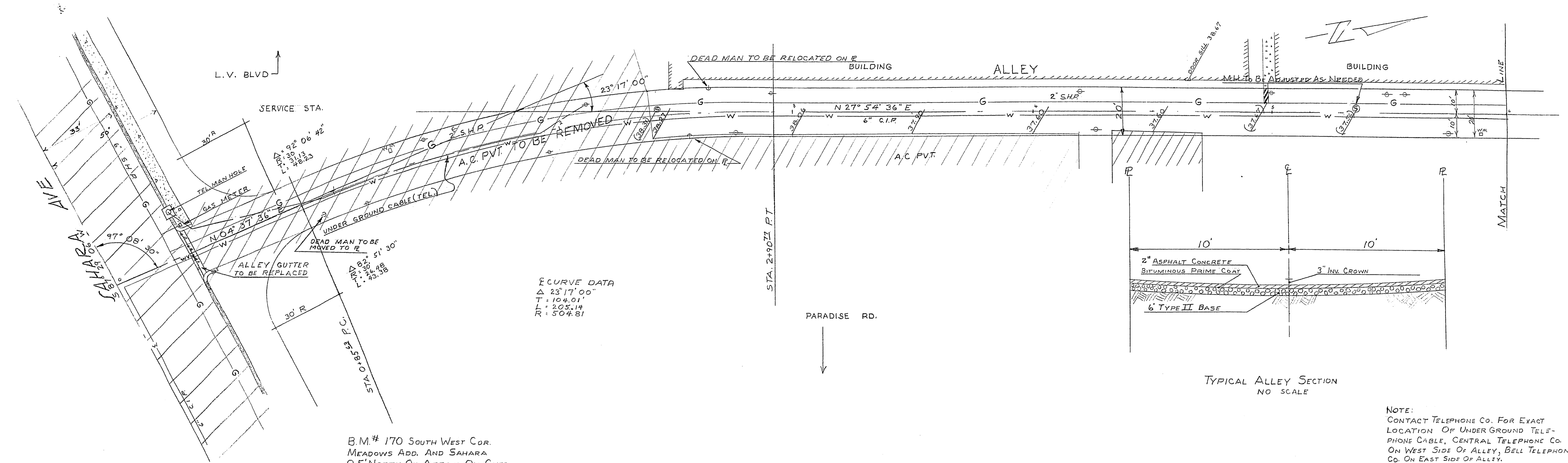


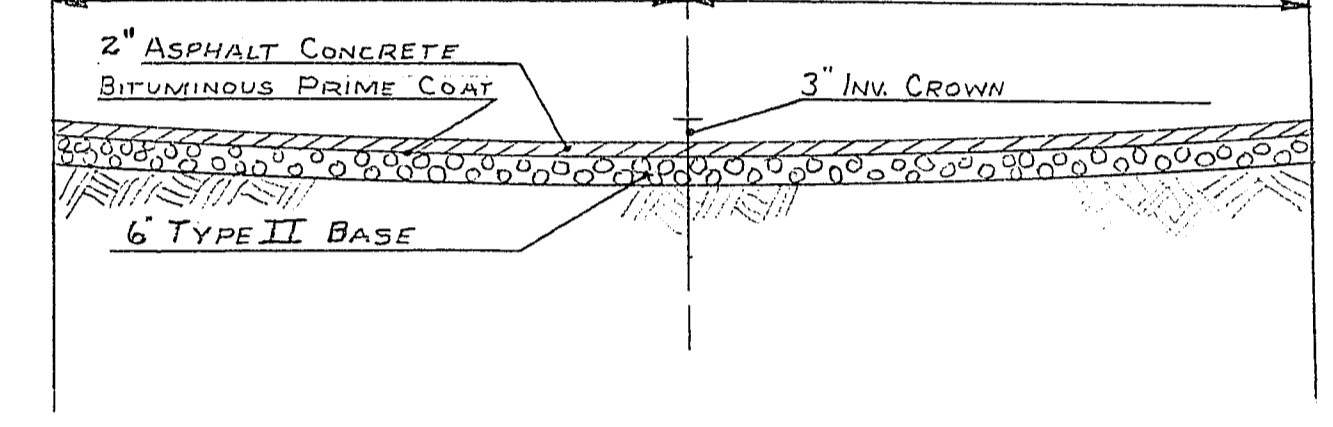
3.5.88

HARRIS
Dobb
12.7.57

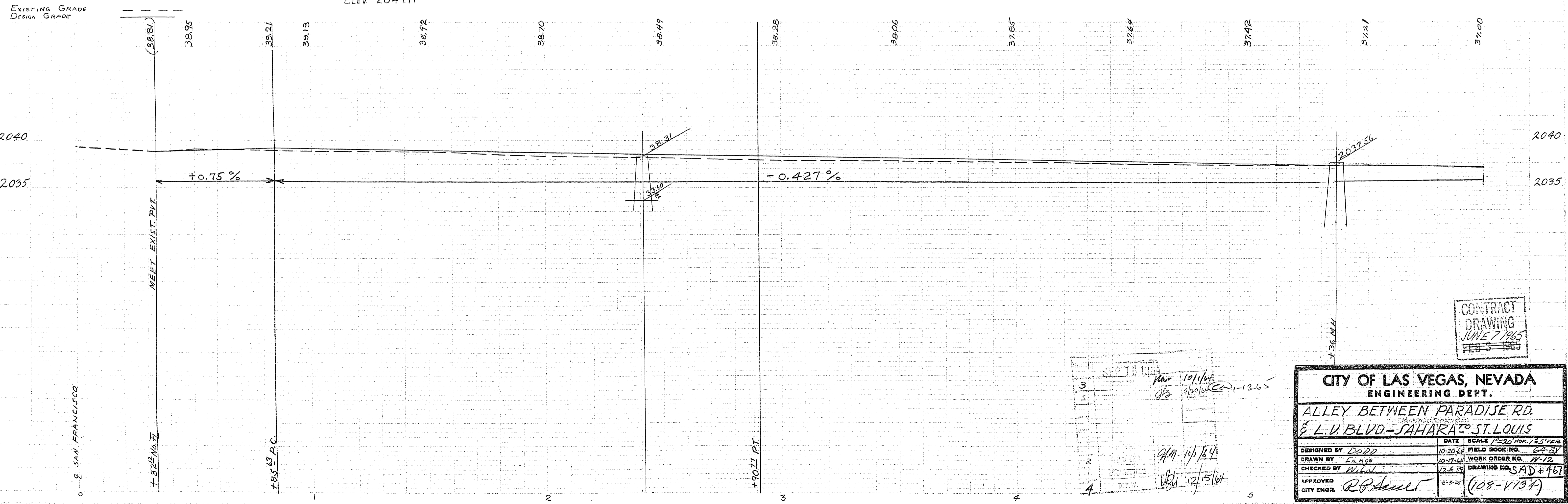


CURVE DATA
 Δ 23°17'00"
 T = 104.01'
 L = 205.14'
 R = 504.81'

B.M. # 170 SOUTH WEST COR.
 MEADOWS ADD. AND SAHARA
 0.5' NORTH OF ARROW ON CURB
 ELEV. 2047.11



NOTE:
 CONTACT TELEPHONE CO. FOR EXACT
 LOCATION OF UNDER GROUND TELE-
 PHONE CABLE, CENTRAL TELEPHONE CO.
 ON WEST SIDE OF ALLEY, BELL TELEPHONE
 CO. ON EAST SIDE OF ALLEY.



HARRIS
Dobb
12.7.57

57-2

CONTRACT
 DRAWING
 JUNE 7 1965
 FEB 3 1965

CITY OF LAS VEGAS, NEVADA
ENGINEERING DEPT.

**ALLEY BETWEEN PARADISE RD.
 & L.V. BLVD.-SAHARA TO ST. LOUIS**

DESIGNED BY	Dobb	DATE	10-20-64	SCALE	1"=20' HOR. / 2"=12' VER.
DRAWN BY	Largo	FIELD BOOK NO.	67-BX	WORK ORDER NO.	11-12
CHECKED BY	WLV	DRAWING NO.	SAD # 467		
APPROVED	R.P. Hunt				(108-V137)

Block II UNIT 3 SHEET 1 OF 2