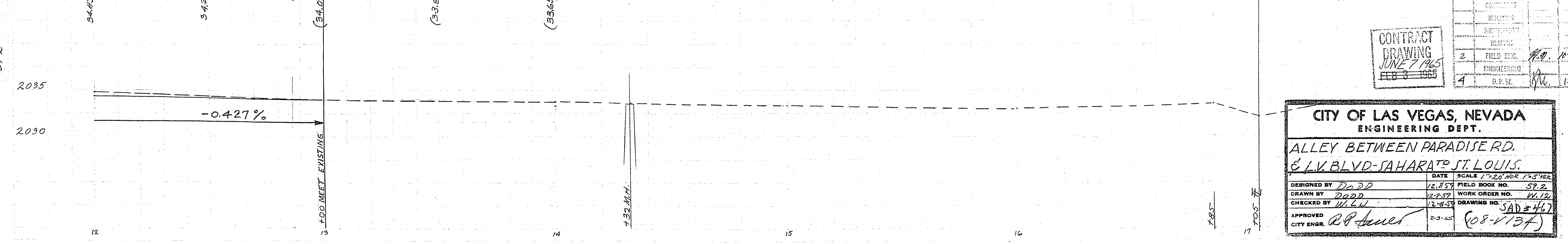
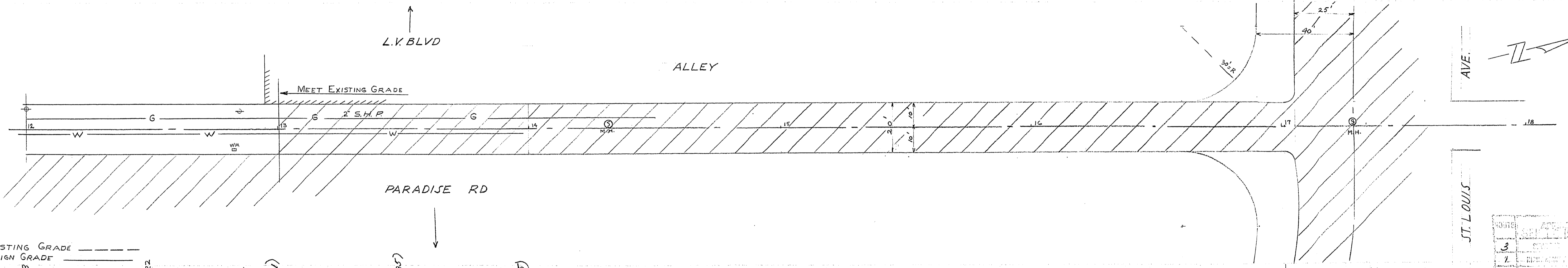
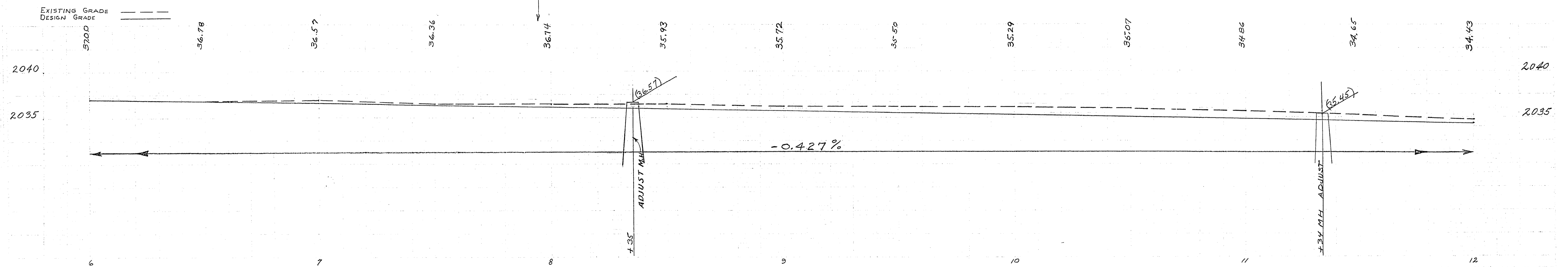
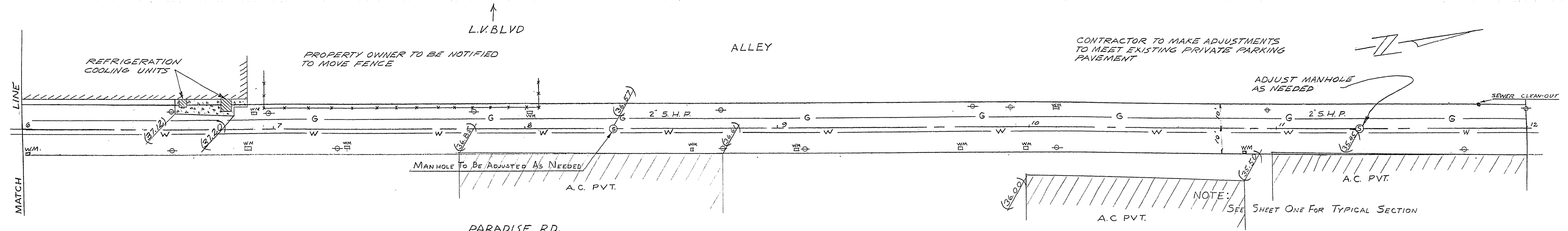


35-2



3	DESIGNED	10/1/64
1	DRAWN	10/1/64
2	CHECKED	10/1/64
4	APPROVED	12/1/64

CONTRACT
DRAWING
JUNE 7 1965
FEB 3 1965

CITY OF LAS VEGAS, NEVADA
ENGINEERING DEPT.

**ALLEY BETWEEN PARADISE RD.
& L.V. BLVD - SAHARA TO ST. LOUIS.**

DESIGNED BY	DADD	DATE	12-8-57	SCALE	1" = 20' HOR. 1/4" = 1' VER.
DRAWN BY	DADD	FIELD BOOK NO.	57-2		
CHECKED BY	W.L.W.	WORK ORDER NO.	1112		
APPROVED	R.P. Jones	DRAWING NO.	SAD # 467		
CITY ENGR.			(08-V137)		