

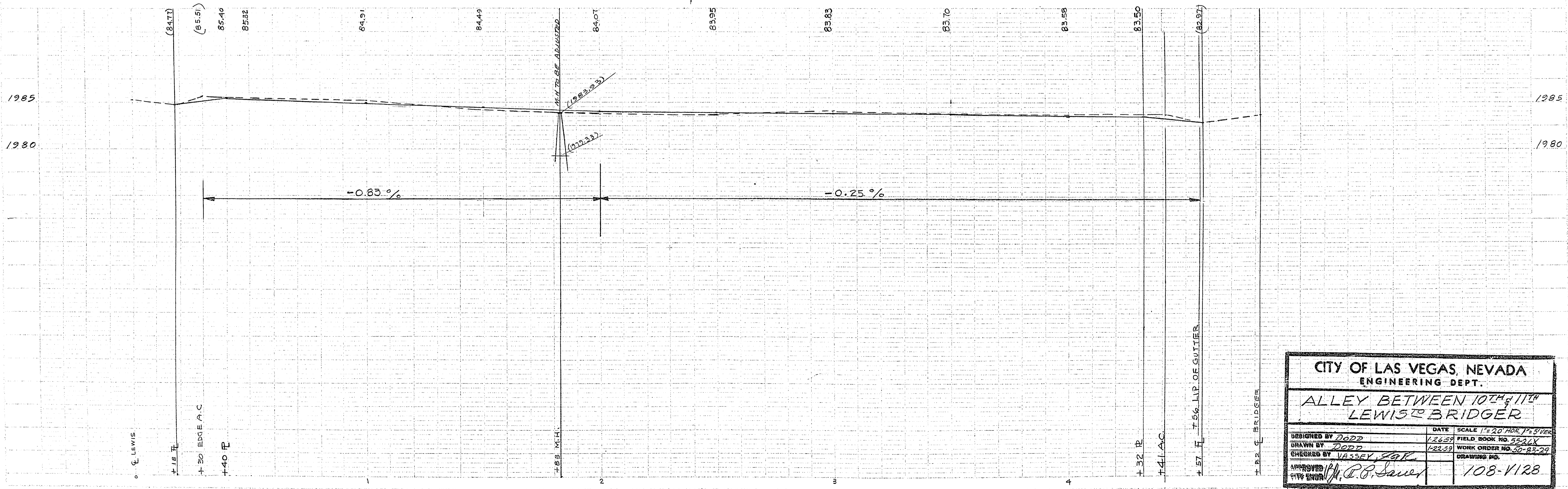
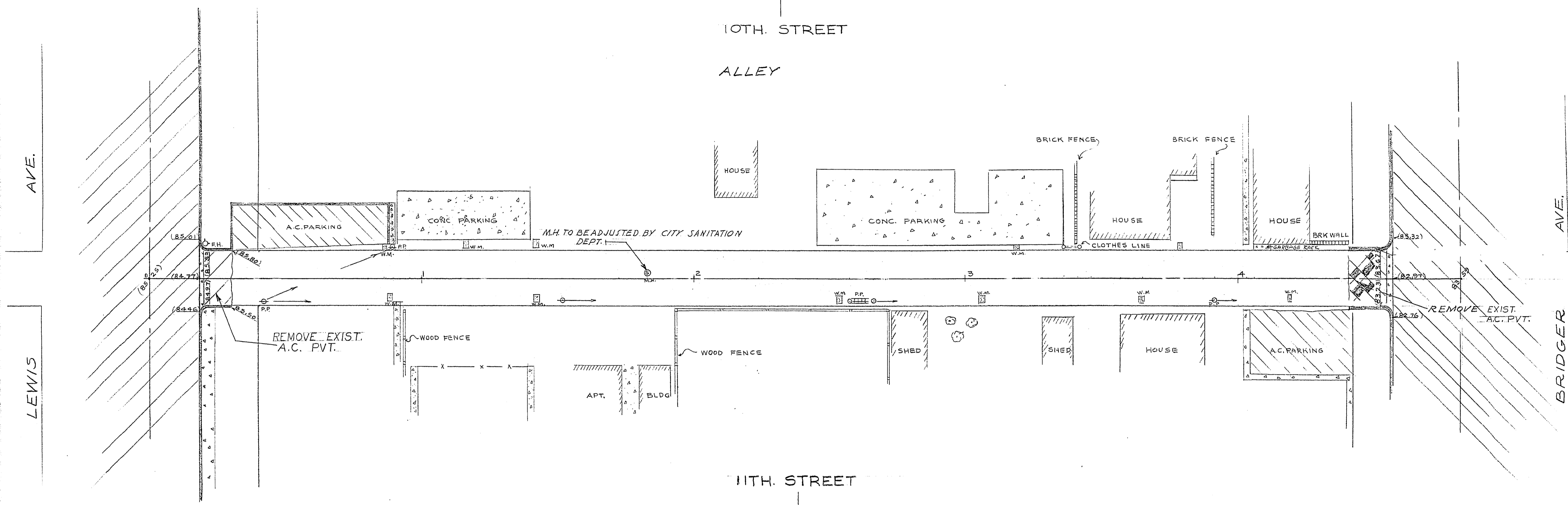
355

STAY
Dodd
1-5-59
1-23-59

55-20X

STAY
Dodd
1-5-59
1-23-59

55-20X



CITY OF LAS VEGAS, NEVADA
ENGINEERING DEPT.

ALLEY BETWEEN 10TH & 11TH
LEWIS & BRIDGER

DESIGNED BY	Dodd	DATE	1-23-59	SCALE	1" = 20' HOR. 1" = 5' VERT.
DRAWN BY	Dodd	FIELD BOOK NO.	55-20X		
CHECKED BY	VASSEY, SGP	WORK ORDER NO.	50-83-29		
APPROVED BY	A. P. Sawyer	DRAWING NO.	108-V128		
CITY ENGINEER					