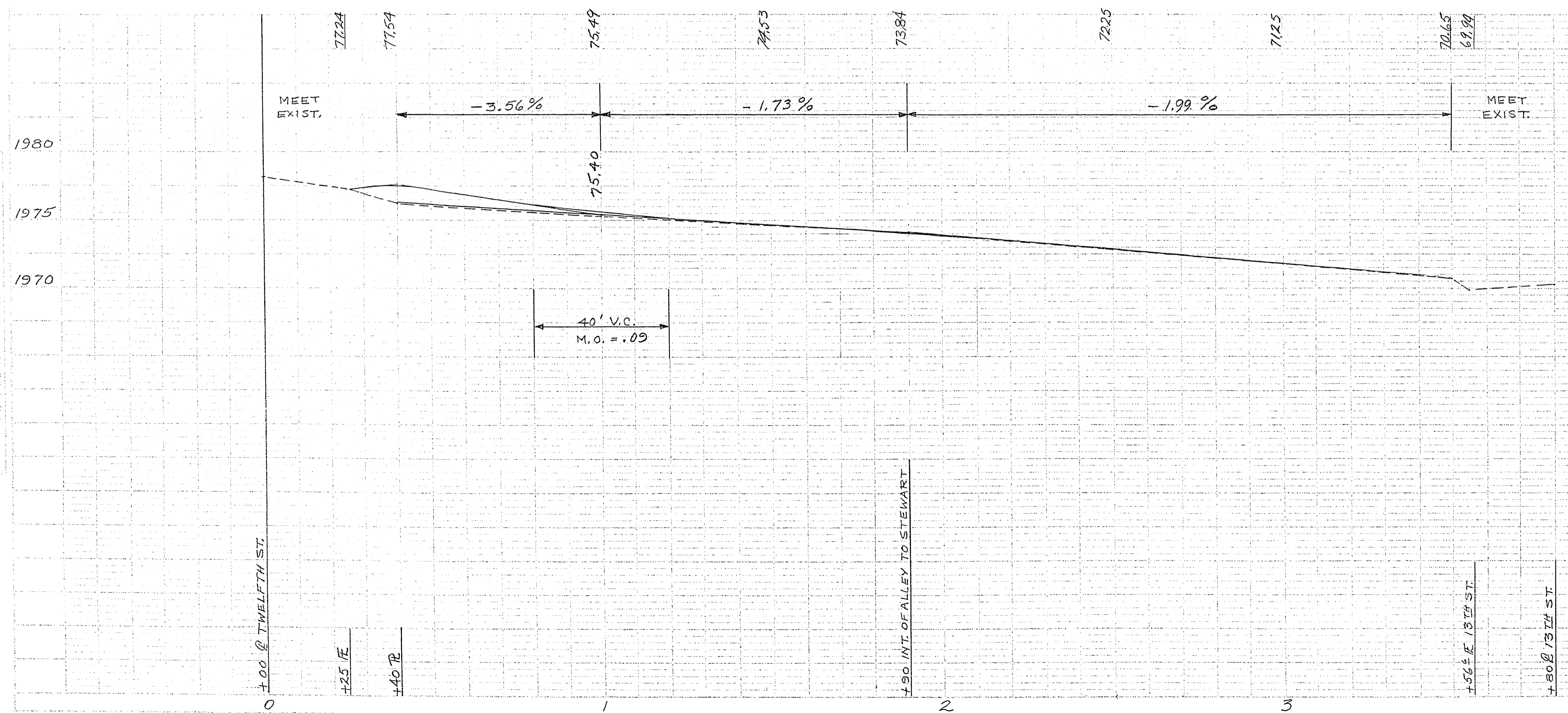
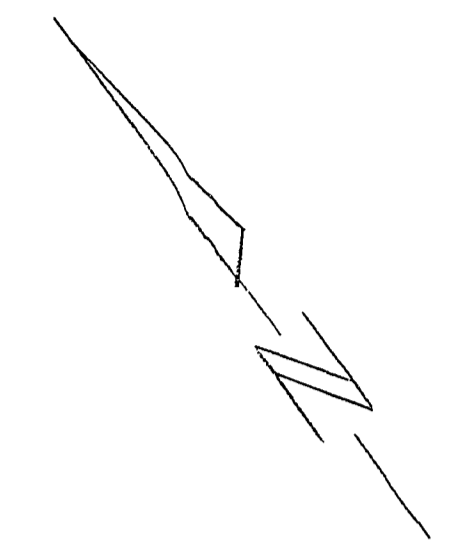
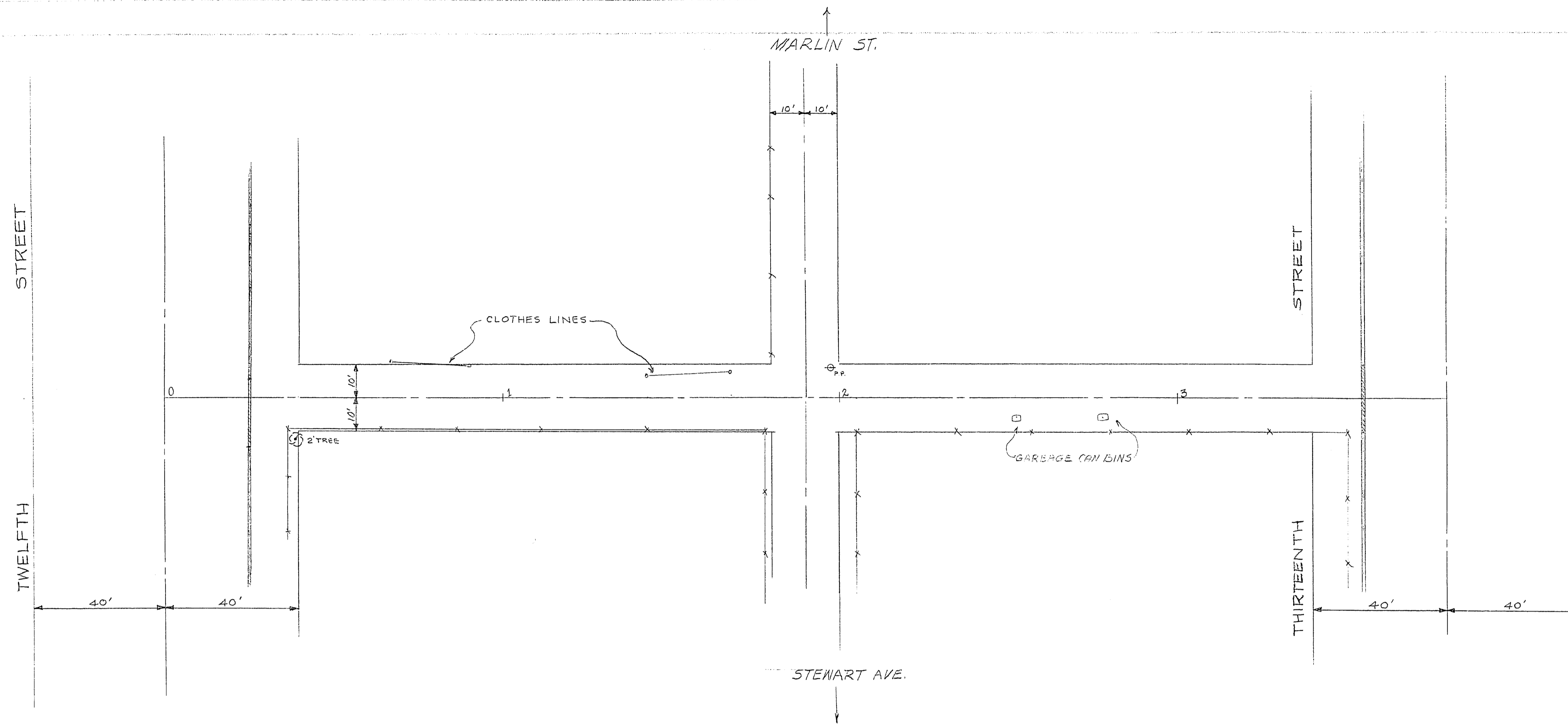


35-4



CITY OF LAS VEGAS, NEVADA	
ENGINEERING DEPT.	
ALLEY BET. STEWART & MARLIN	
12 TH ST. TO 13 TH ST.	
DESIGNED BY: L.H.	SCALE: 1" = 20' H - 1" = 5' V.
DRAWN BY: C.H.T.	FIELD BOOK NO: 58-7X
CHECKED BY: B.A.D.	WORK ORDER NO: 50-83-24
APPROVED BY:	DRAWING NO:
NGR:	108-V-127