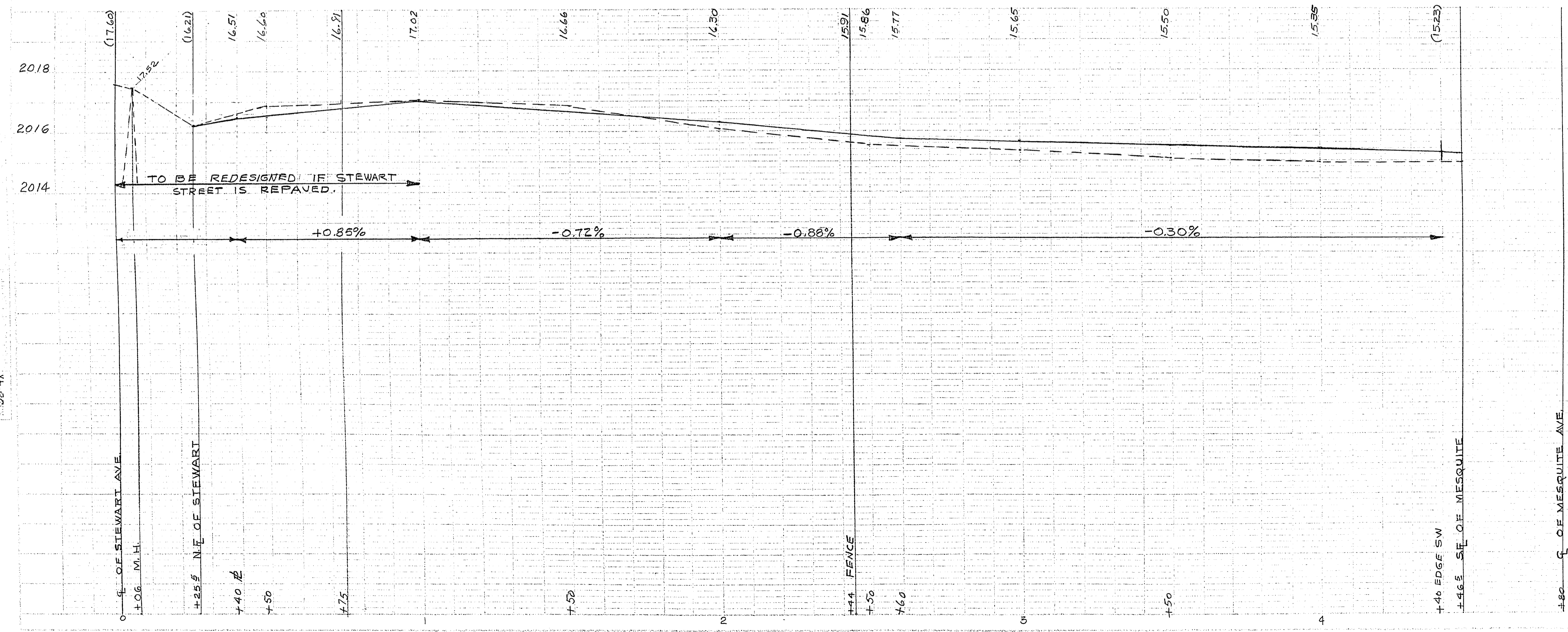
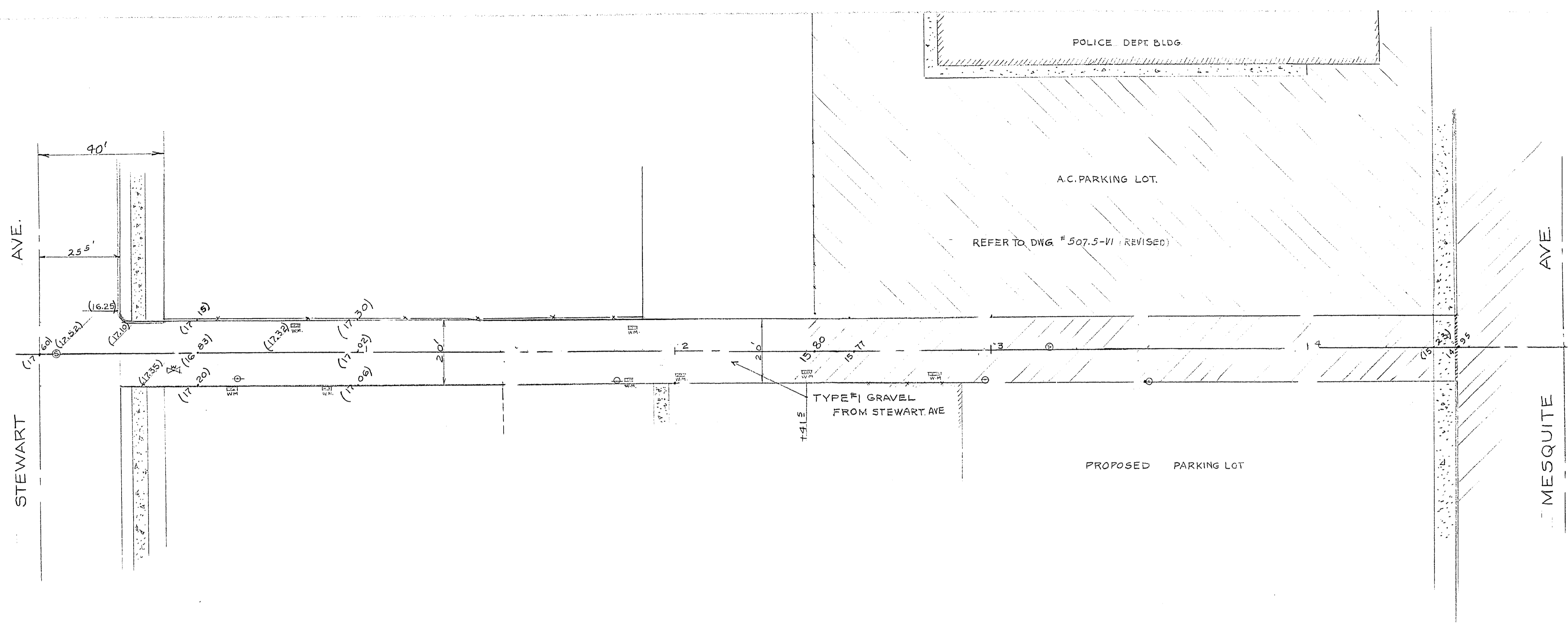
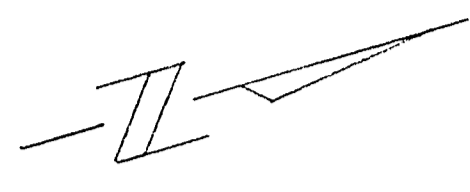


3-5-13



6-27-58  
6-27-58  
STAY  
Dodd

6-24-58  
6-27-58  
STAY  
Dodd

CITY OF LAS VEGAS, NEVADA ENGINEERING DEPT.			
ALLEY BETWEEN 1ST & 2ND STEWART TO MESQUITE			
DESIGNED BY: SMALL	DATE: 7/8/58	SCALE: 1" = 20' HOR. 1/2" = 1' VER.	FIELD BOOK NO. 58-4X
DRAWN BY: DODD	6-27-58	WORK ORDER NO. 58-E9-29	
CHECKED BY: B.L.		DRAWING NO.	
APPROVED: R.P. Lauer			108-V126