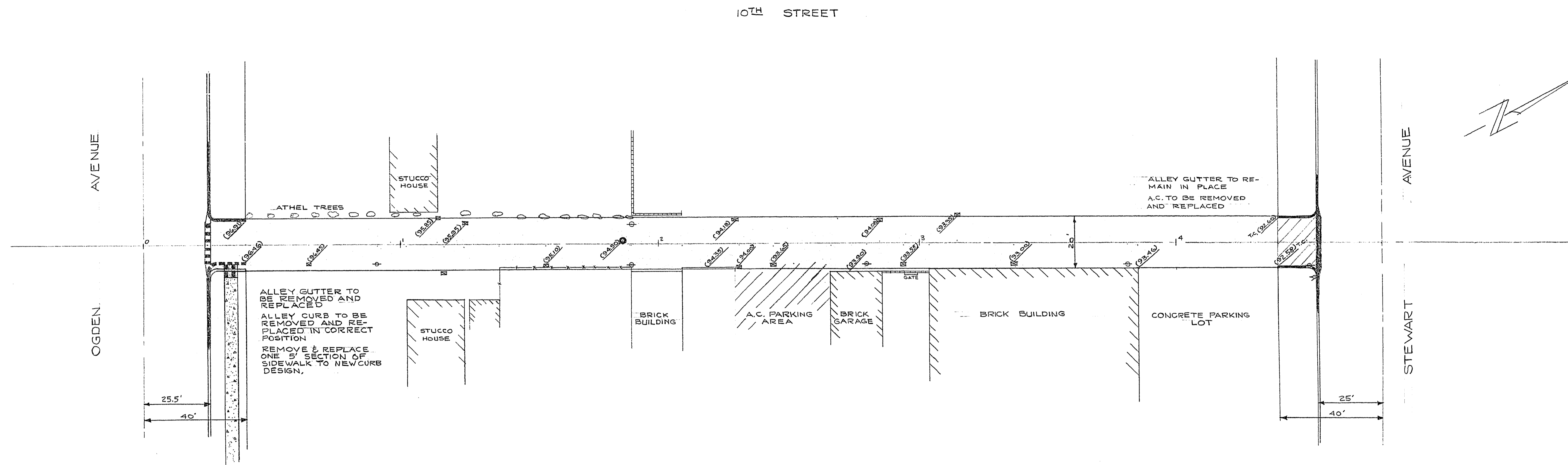
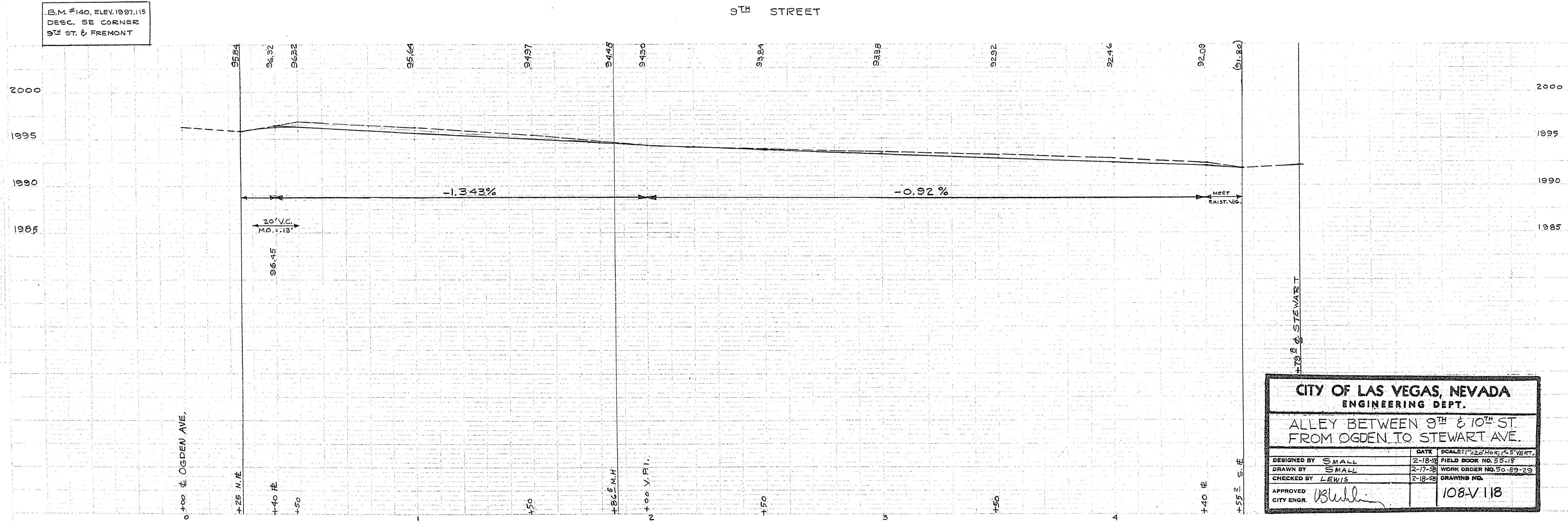


355



B.M. #140, ELEV. 1997.115
DESC. SE CORNER
9TH ST. & FREMONT



CITY OF LAS VEGAS, NEVADA
ENGINEERING DEPT.

ALLEY BETWEEN 9TH & 10TH ST.
FROM OGDEN TO STEWART AVE.

DESIGNED BY	SMALL	DATE	2-18-58	SCALE: 1" = 20' HOR; 1/8" = 1' VERT.
DRAWN BY	SMALL	FIELD BOOK NO.	55-18	
CHECKED BY	LEWIS	WORK ORDER NO.	50-89-23	
APPROVED	<i>B. Lewis</i>	DRAWING NO.	108-V-118	
CITY ENGR.				