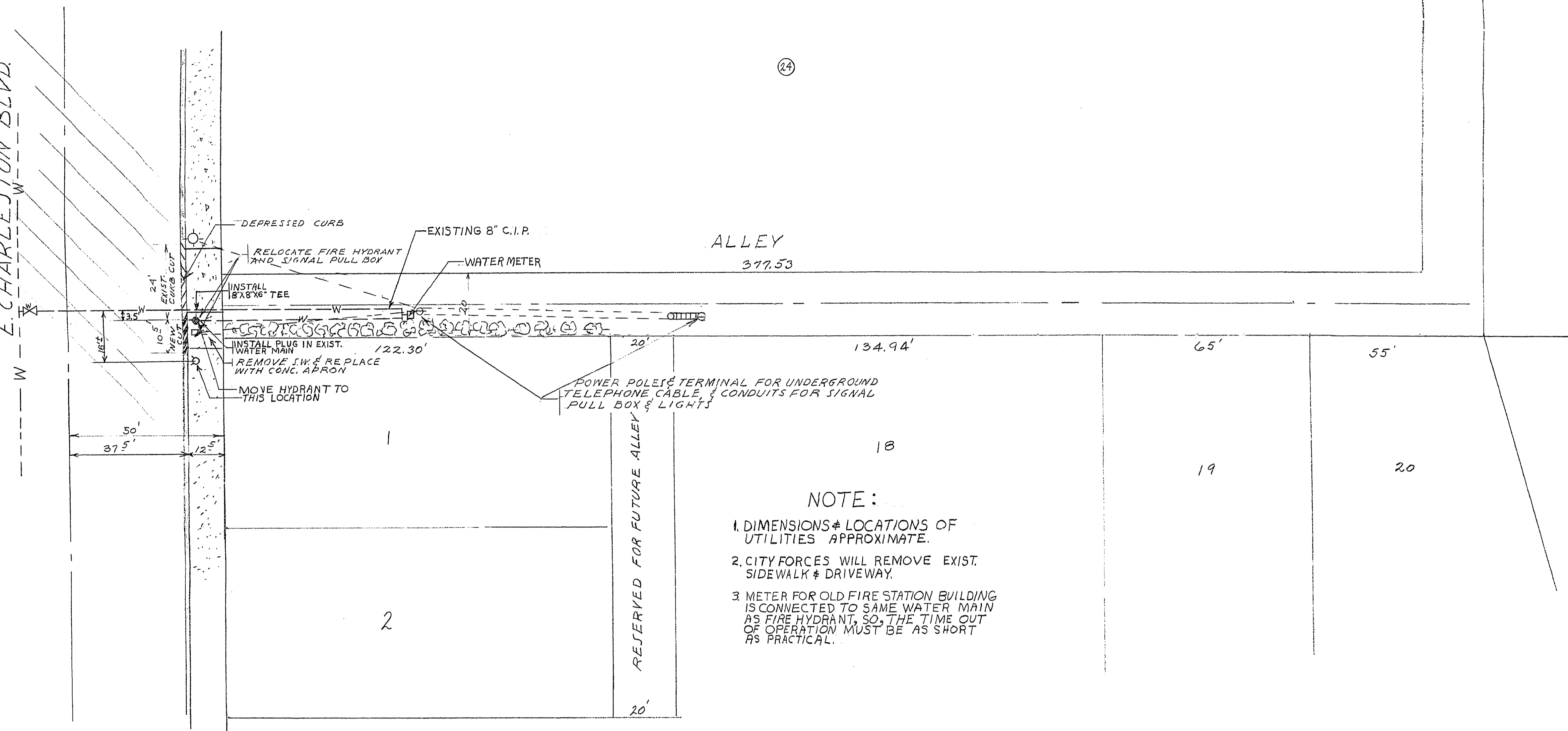


7/63

E CHARLESTON BLVD



ALLEY
377.53

134.94'

65'

55'

POWER POLES & TERMINAL FOR UNDERGROUND TELEPHONE CABLE & CONDUITS FOR SIGNAL PULL BOX & LIGHTS

NOTE:

- 1. DIMENSIONS & LOCATIONS OF UTILITIES APPROXIMATE.
- 2. CITY FORCES WILL REMOVE EXIST. SIDEWALK & DRIVEWAY.
- 3. METER FOR OLD FIRE STATION BUILDING IS CONNECTED TO SAME WATER MAIN AS FIRE HYDRANT, SO, THE TIME OUT OF OPERATION MUST BE AS SHORT AS PRACTICAL.

RESERVED FOR FUTURE ALLEY

CITY OF LAS VEGAS NEVADA ENGINEERING DEPT.		
CORRECTION OF ALLEY ENTRANCE FROM E. CHARLESTON SOUTH INTO HUNTRIDGE 2		
DES.	DATE	SC. (H) 1 1/2 20'
DR. DODD	7.13.60	SC. (V)
CKD.		P.J.O. NO. W 12
APPROVED BY CITY ENGR.		DRAWING NO.
		108-116-X