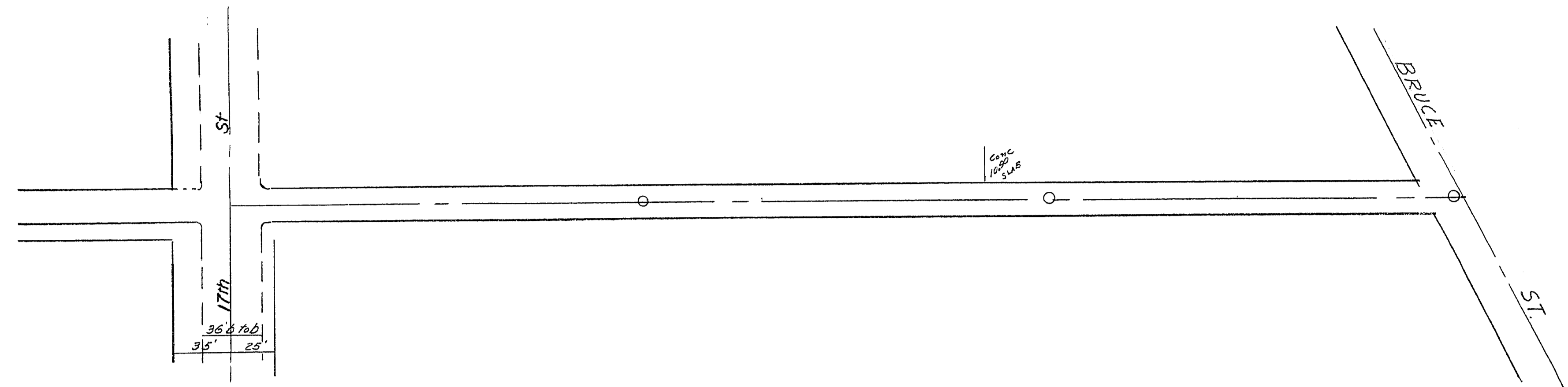
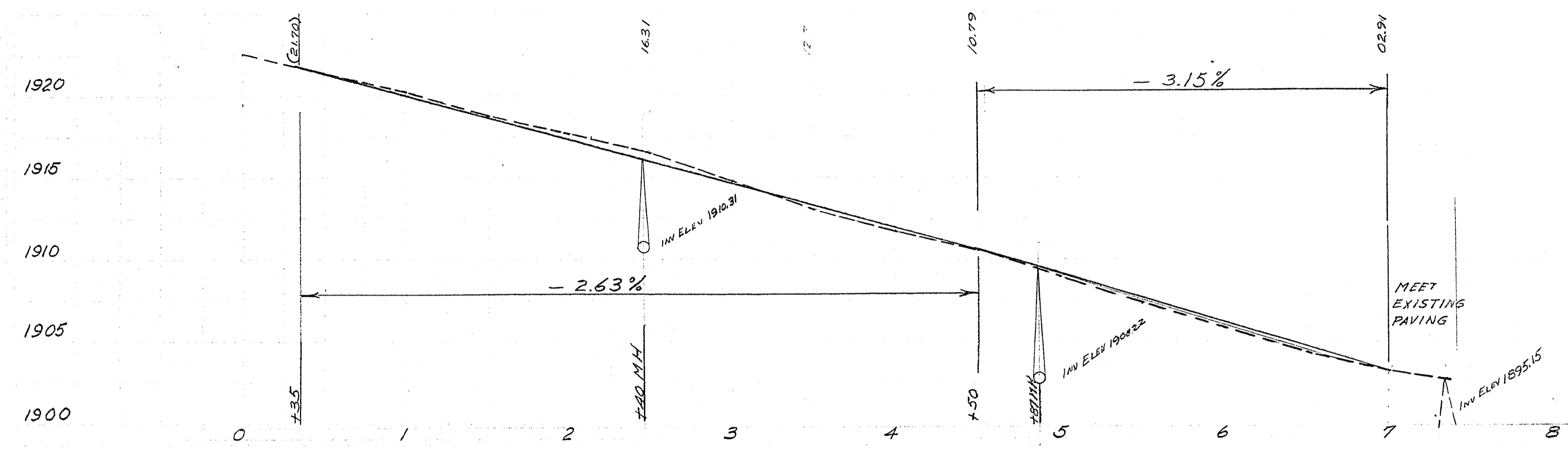


25119



CONFORM TO STANDARD S-11A



CITY OF LAS VEGAS, NEVADA			
ENGINEERING DEPT.			
ALLEY SOUTH OF FREMONT			
17 TH ST TO BRUCE ST			
DESIGNED BY	KCH	DATE	8/2/56
DRAWN BY	KCH	SCALE	1" = 30' & 1" = 5'
CHECKED BY	W.L.	FIELD BOOK NO.	1048
APPROVED	<i>[Signature]</i>	WORK ORDER NO.	
CITY ENGR.		DATE	6/18/56
		DRAWING NO.	108-V 8