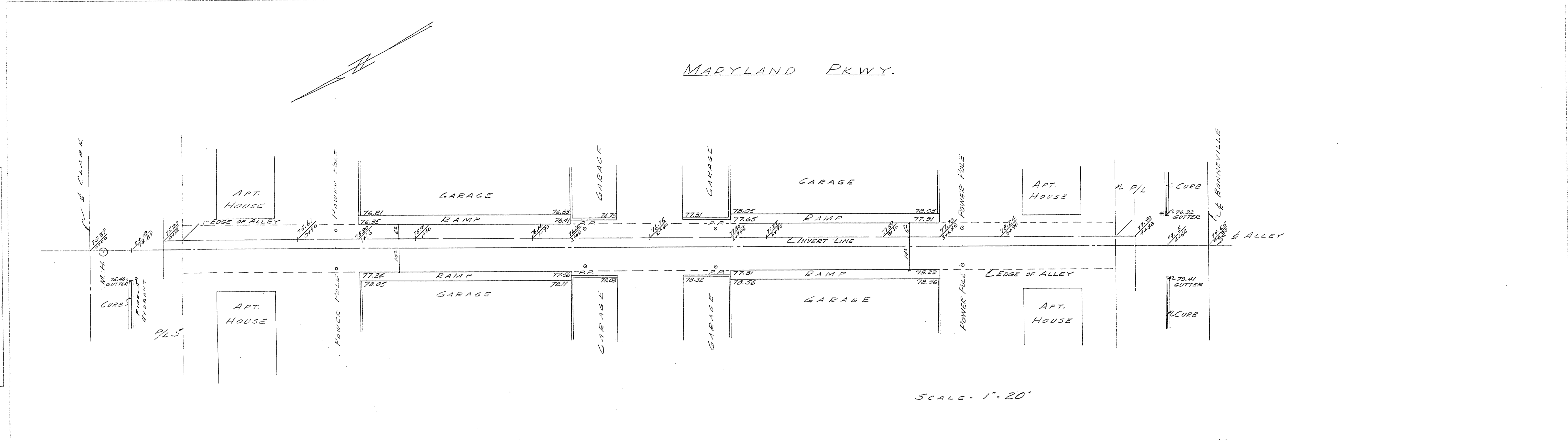


25101

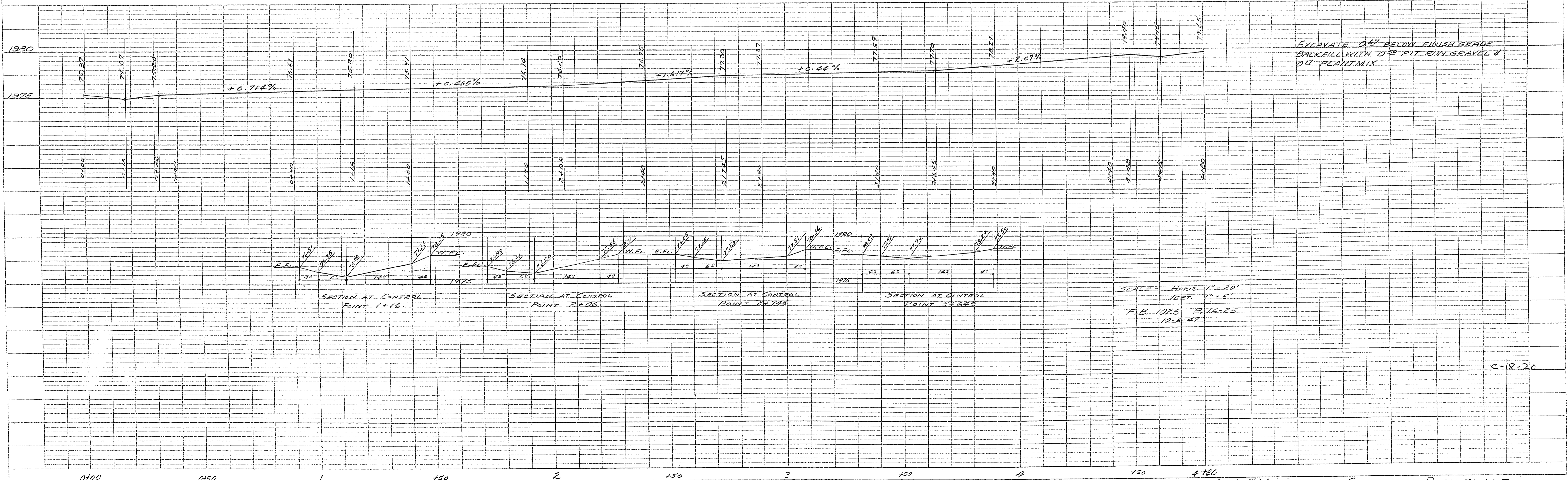
MARYLAND PKWY.



SCALE - 1" = 20'

11TH ST.

NOTE:
 1. * DENOTES B.M. ON TOP OF CURB. ELEV. 1979.42
 2. INVERT TO RUN 4 FT. EAST OF $\frac{1}{2}$ OF ALLEY FROM STA. 0+32 TO 4+48, USE 0.25 INVERT EXCEPT BETWEEN STATIONS 1+16 TO 2+06 & 2+74.8 TO 3+64.8 (SEE SECTION DETAILS BELOW FOR INVERT TO BE USED BETWEEN THESE STATIONS)



SCALE - HORIZ. 1" = 20'
 VERT. 1" = 5'
 F.B. 1025 P. 16-25
 10-6-41

C-18-20