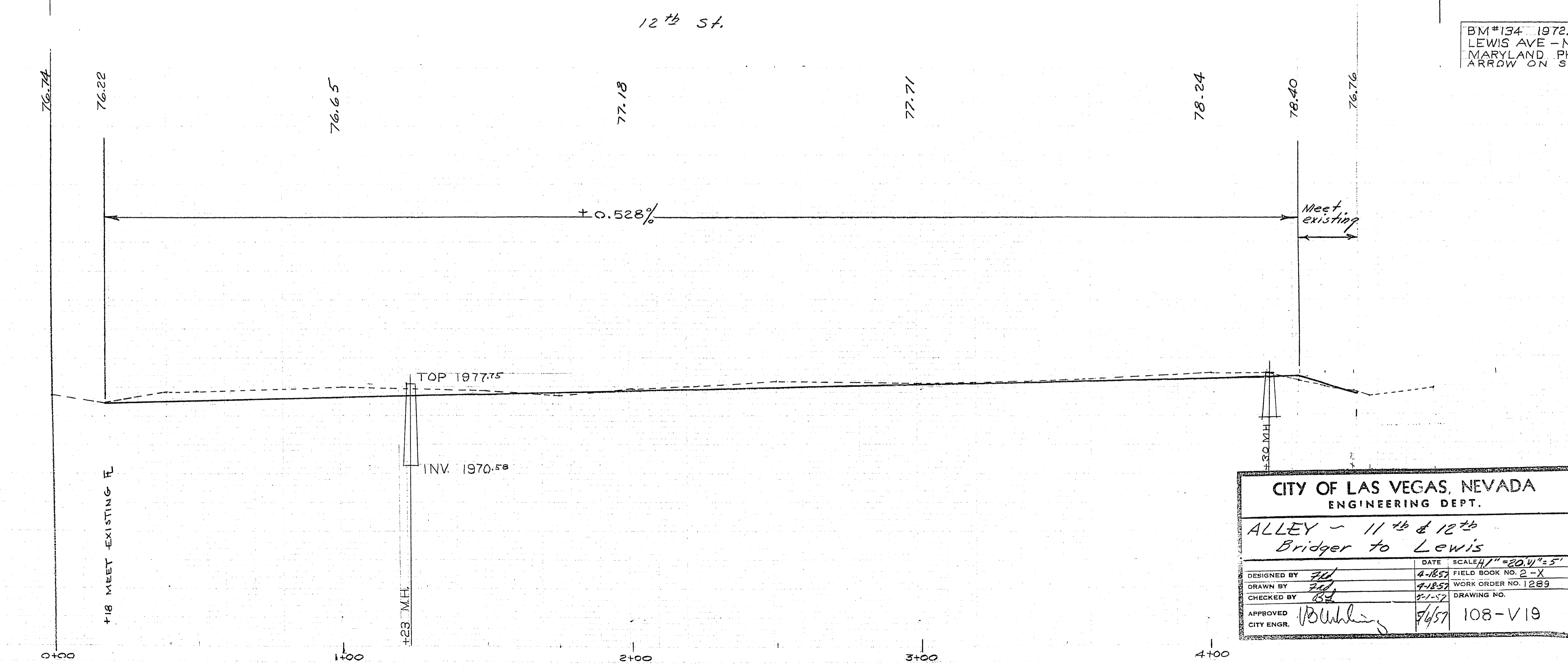
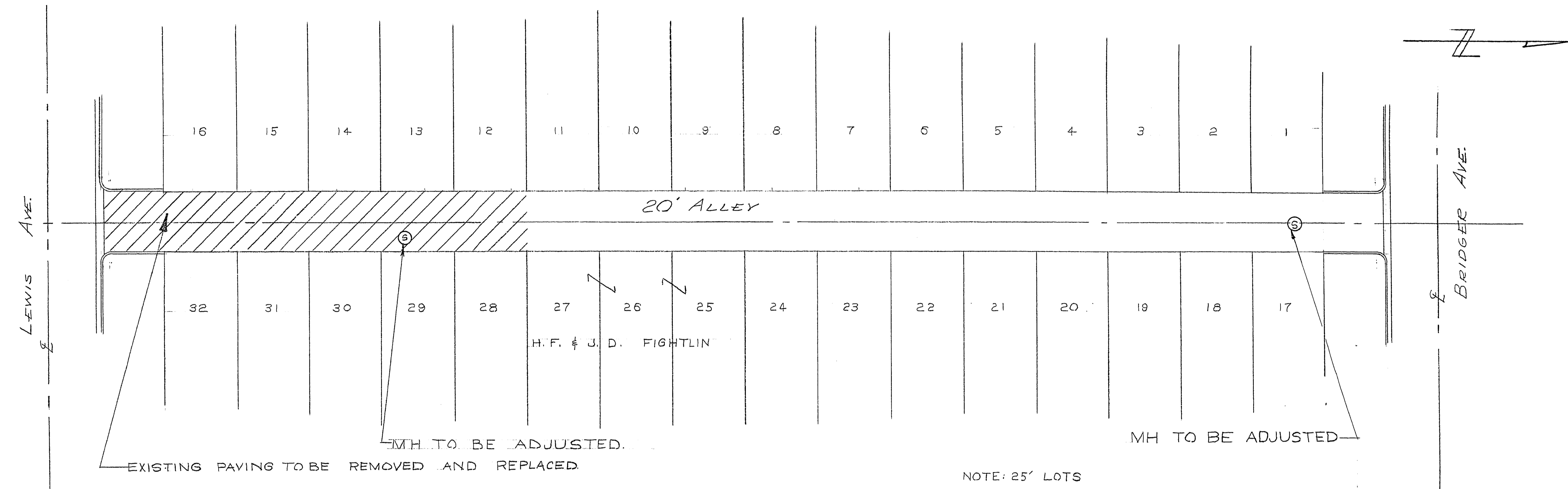


2-5108

11th St.



BM#134 1972.770
 LEWIS AVE - NW COR
 MARYLAND PKWY 1/4 N OF
 ARROW ON SW.

CITY OF LAS VEGAS, NEVADA ENGINEERING DEPT.			
ALLEY - 11th & 12th Bridger to Lewis			
DESIGNED BY	DATE	SCALE	1" = 20.0' = 5'
DRAWN BY	4-18-57	FIELD BOOK NO.	2-X
CHECKED BY	4-18-57	WORK ORDER NO.	1289
APPROVED	4-18-57	DRAWING NO.	
CITY ENGR.	Bushley	5/6/57	108-V19

13/6/54
4/18/57

WAGSTAFF
F.X.S.

2-X

18/5/54
4/18/57

WAGSTAFF
F.X.S.

2-X

1980

1975

1980

1975