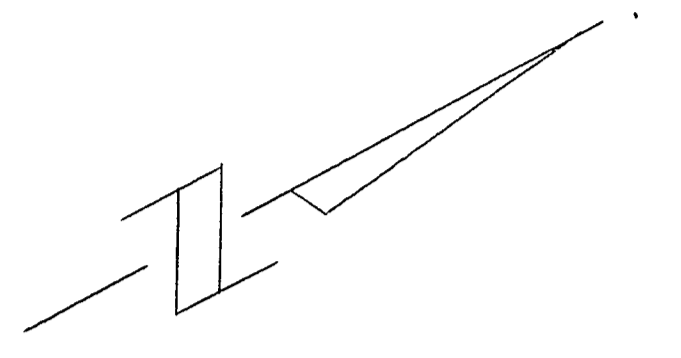
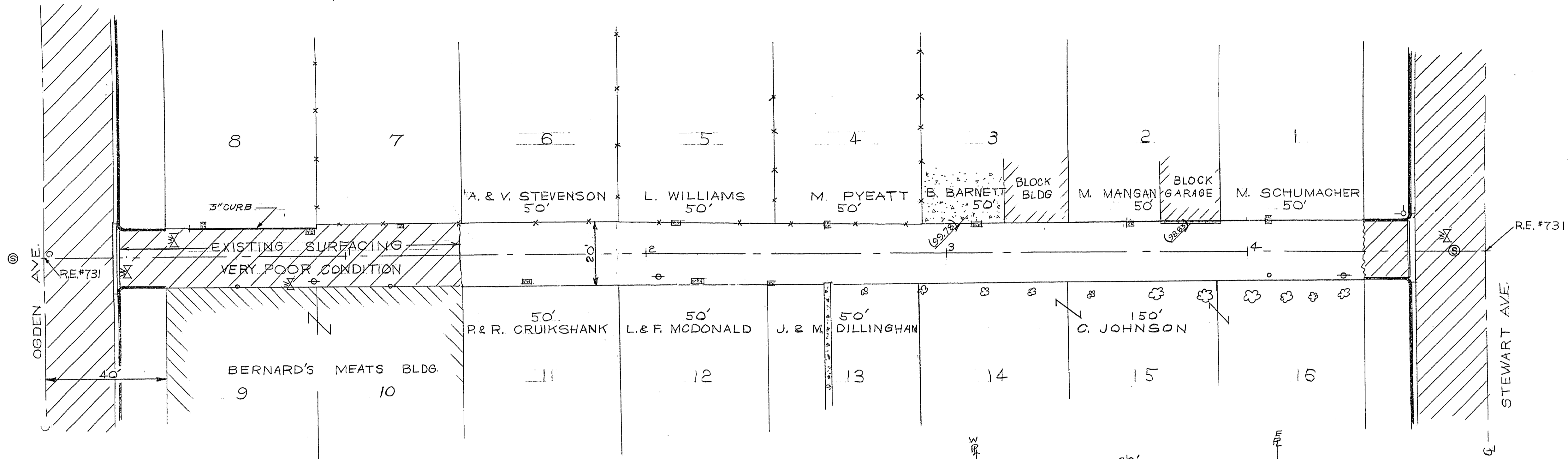
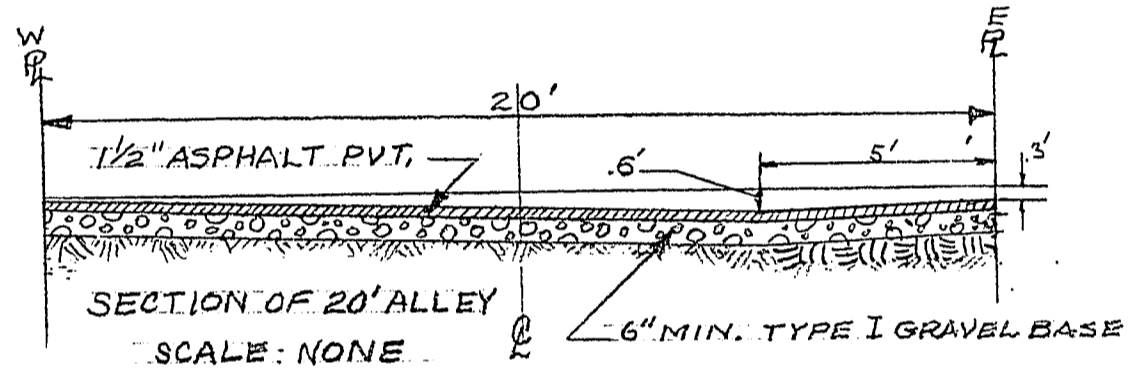


2-5-97

DITTMER
LEWIS
Doughty &
55-28X

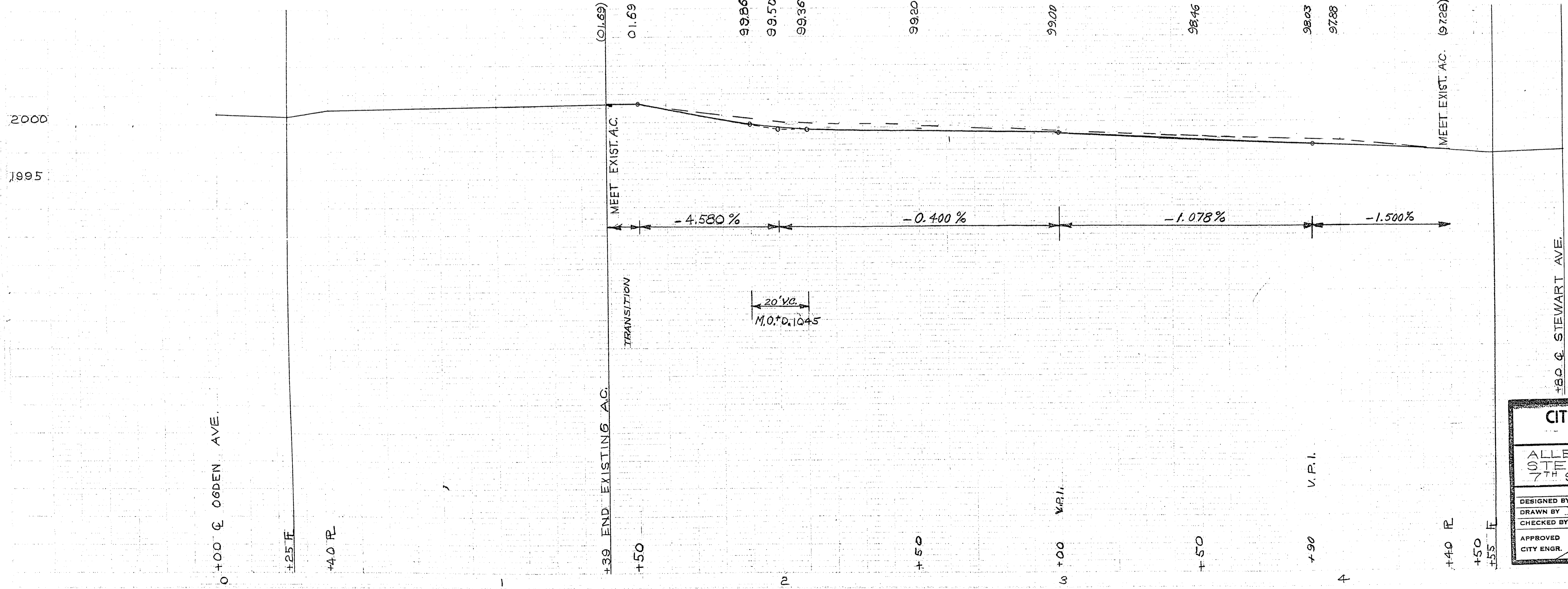


NOTE: 1" = 10' METER BOXES



B.M. ELEVATION 2000.41
 DESC: HYDRANT AT S.W. COR.
 INTERSECTION STEWART & SHOWN ALLEY

DITTMER
LEWIS
Doughty &
55-28X



CITY OF LAS VEGAS, NEVADA
 ENGINEERING DEPT.

ALLEY FROM OGDEN AVE. TO STEWART AVE. BETWEEN 7TH ST. & 8TH ST.

DESIGNED BY	LEWIS	DATE	6 MAY 97	SCALE	HOR 1" = 20' VER 1" = 5'
DRAWN BY	LEWIS	FIELD BOOK NO.	55-28X	WORK ORDER NO.	1289
CHECKED BY	HELMEDY	DRAWING NO.	5-12-57		
APPROVED	<i>[Signature]</i>				108-V80