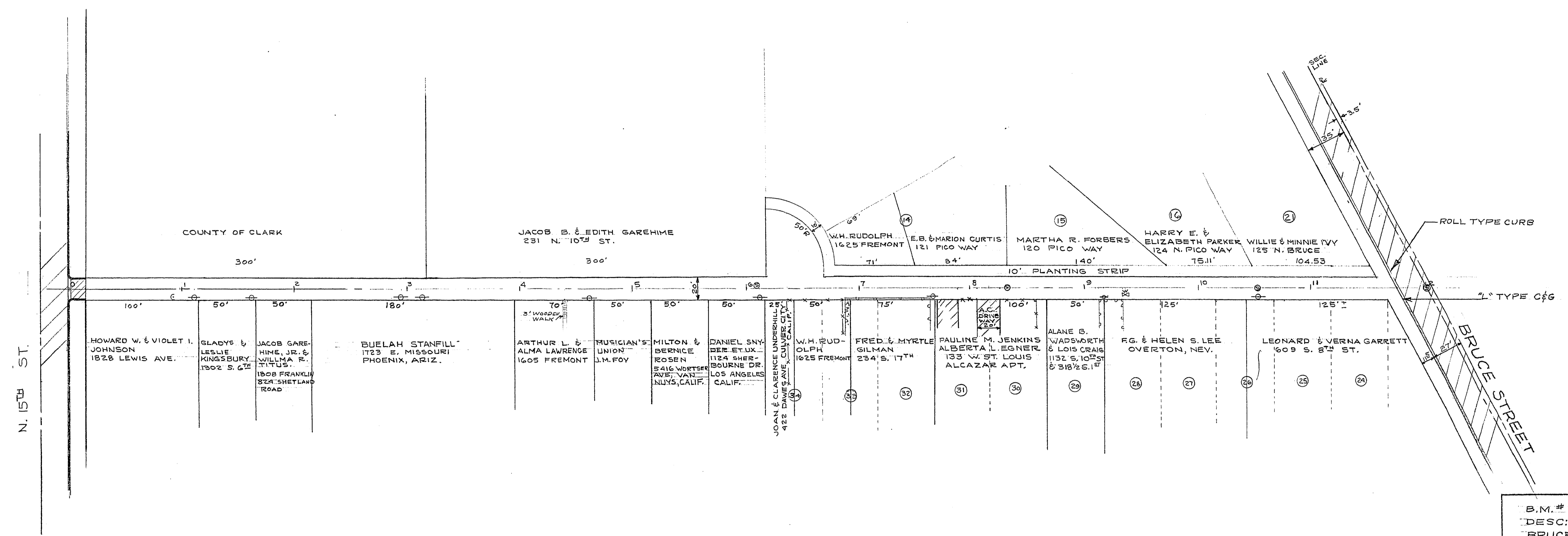


2536

DITTMER 5-9-37  
HARPER 5-9-37  
Dwight E.

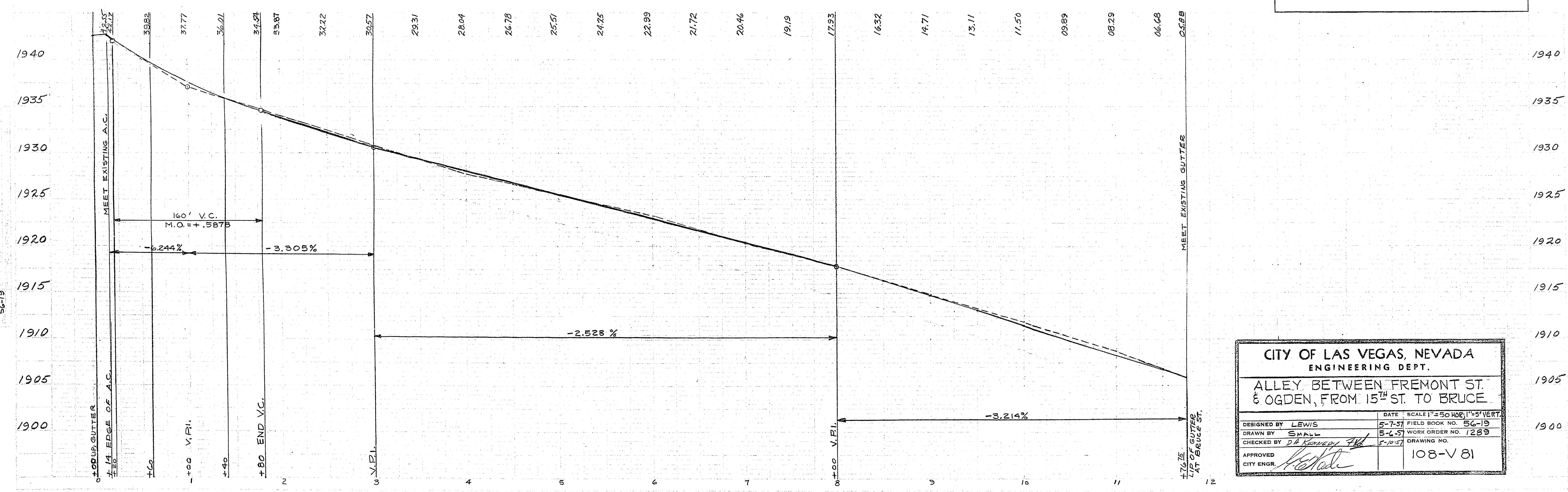
56-19



B.M. #147 - ELEVATION 1907.071  
DESC: STEWART AVE. S.E. CORNER  
BRUCE STREET - .55' FROM ARROW  
ON CURB.

BEALS 3-57  
SMALL 4-57  
Approved

56-19



CITY OF LAS VEGAS, NEVADA  
ENGINEERING DEPT.

ALLEY BETWEEN FREMONT ST. & OGDEN, FROM 15<sup>TH</sup> ST. TO BRUCE.

DESIGNED BY LEWIS	DATE 5-7-37	SCALE 1" = 50' HOR. 1" = 5' VERT.
DRAWN BY SMALL	FIELD BOOK NO. 56-19	WORK ORDER NO. 1289
CHECKED BY D.A. KENNEDY	5-10-37	DRAWING NO.
APPROVED [Signature]		108-V 81