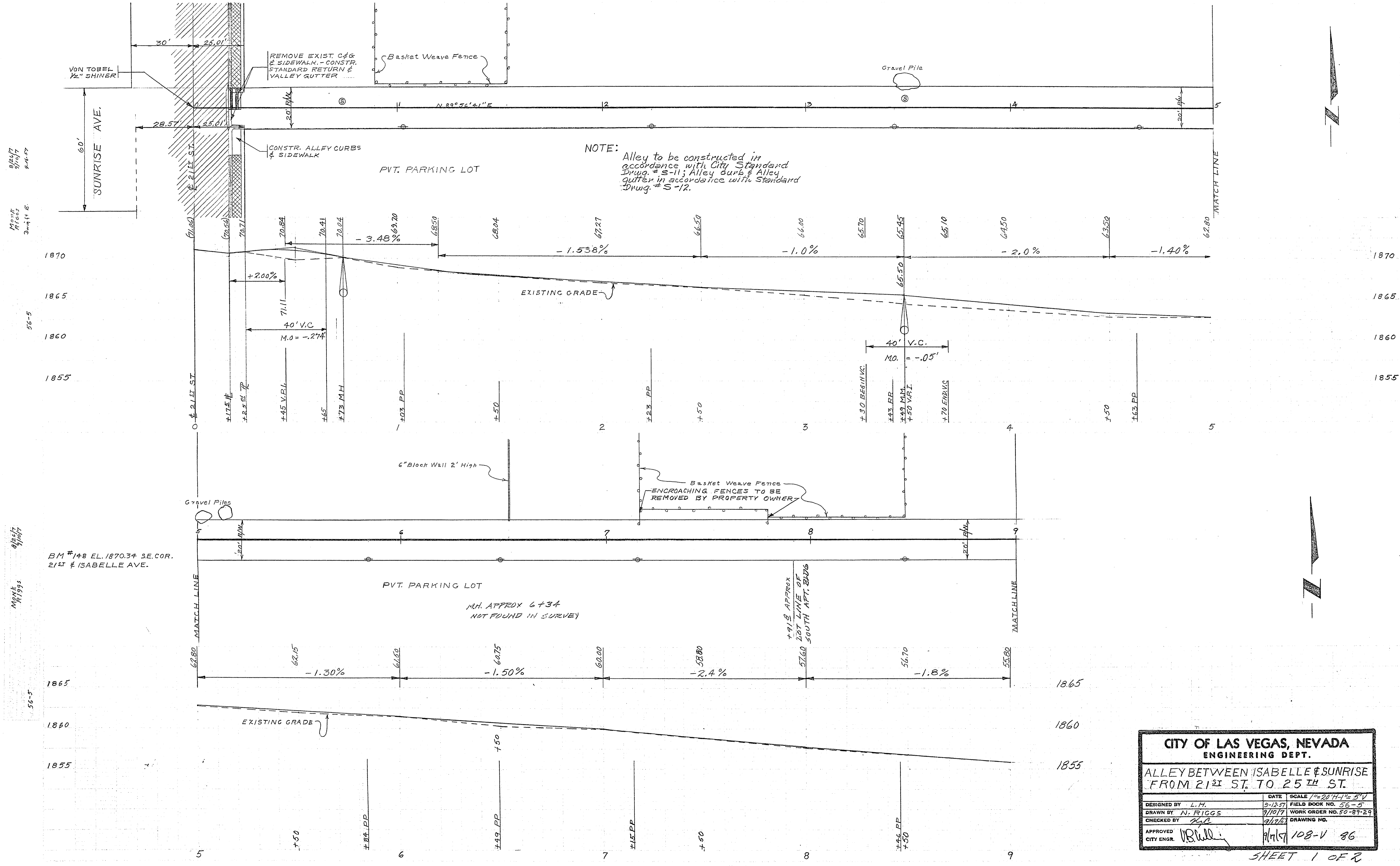


25-00



9/16/77
9/16/77
9/16/77

9/16/77
9/16/77
9/16/77

56-5

1855

9/16/77
9/16/77
9/16/77

56-5

1865

1860

1855

BM #148 EL. 1870.34 SE. COR. 21ST & ISABELLE AVE.

CITY OF LAS VEGAS, NEVADA ENGINEERING DEPT.			
ALLEY BETWEEN ISABELLE & SUNRISE FROM 21 ST ST. TO 25 TH ST.			
DESIGNED BY	L.H.	DATE	9-12-77
DRAWN BY	N. RIGGS	SCALE	1" = 20' H-1" = 5' V
CHECKED BY	R.C.	FIELD BOOK NO.	56-5
APPROVED	[Signature]	WORK ORDER NO.	30-87-29
CITY ENGR.		DRAWING NO.	
		108-V	86

SHEET 1 OF 2