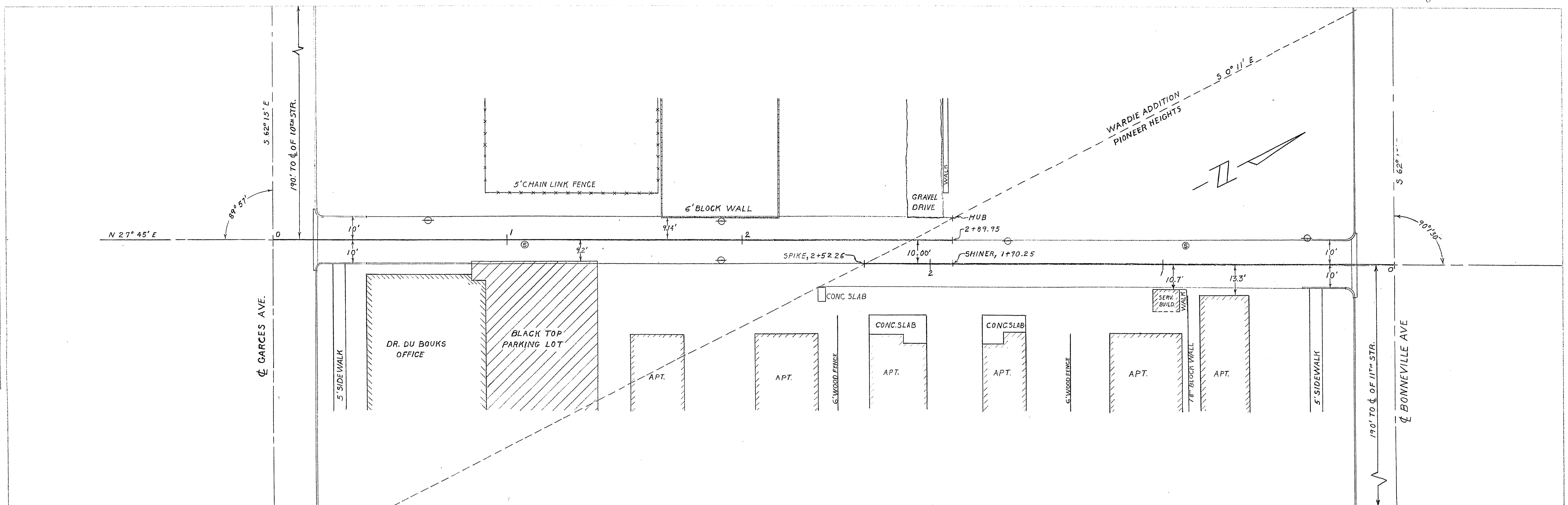
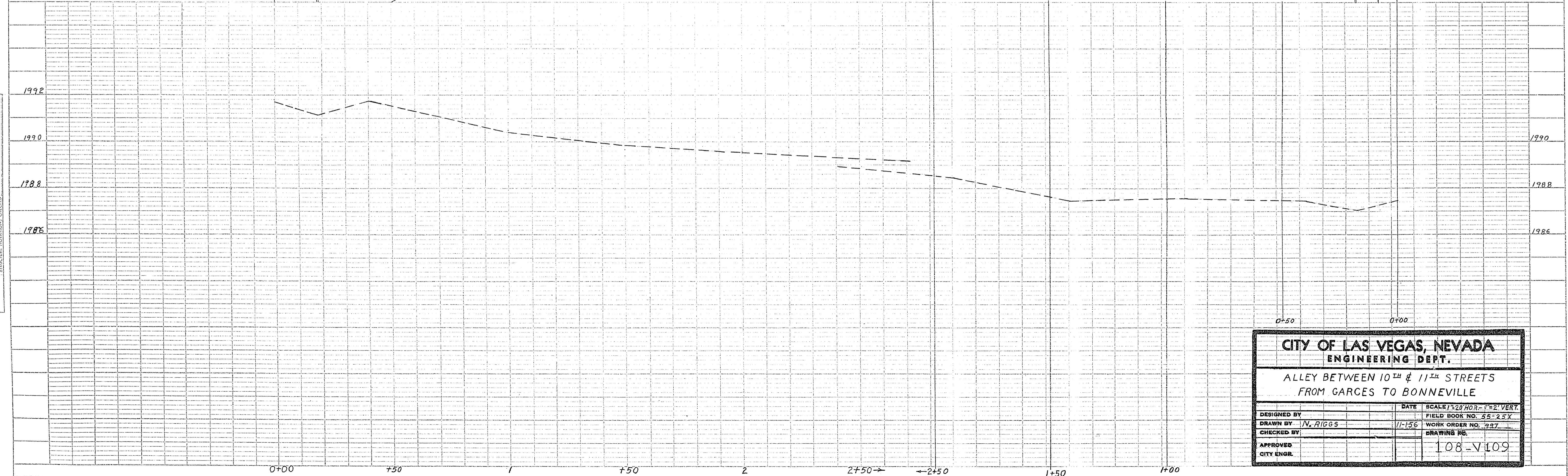


256

PLAN
 SUPERVISOR
 REVIEWED
 DATE
 NO. OF SHEETS
 NO. OF THIS SHEET
 NO. OF THIS DRAWING



PROFILE
 CHECKED
 DATE
 NO. OF SHEETS
 NO. OF THIS SHEET
 NO. OF THIS DRAWING



CITY OF LAS VEGAS, NEVADA			
ENGINEERING DEPT.			
ALLEY BETWEEN 10 TH & 11 TH STREETS FROM GARGES TO BONNEVILLE			
DESIGNED BY	DATE	SCALE: 1" = 20' HOR. - 1" = 2' VERT.	
DRAWN BY: N. RIGGS	11-156	FIELD BOOK NO. 55-25X	
CHECKED BY:		WORK ORDER NO. 917	
APPROVED		DRAWING NO.	
CITY ENGR.		108-V109	