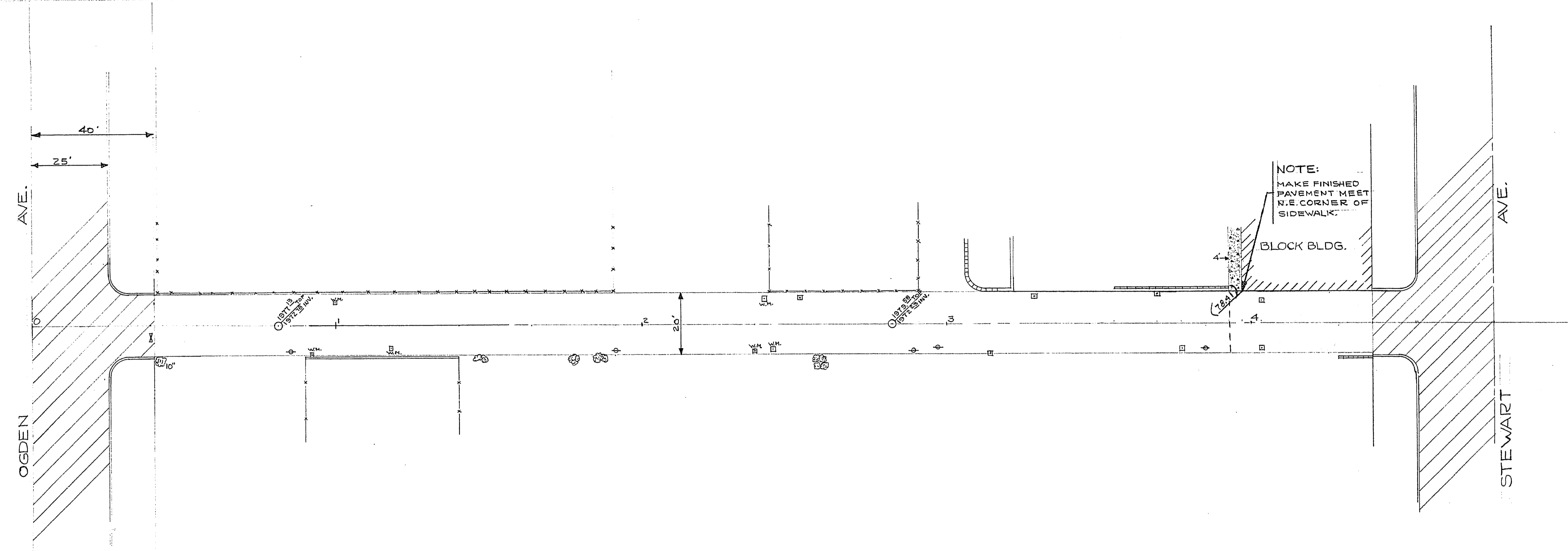


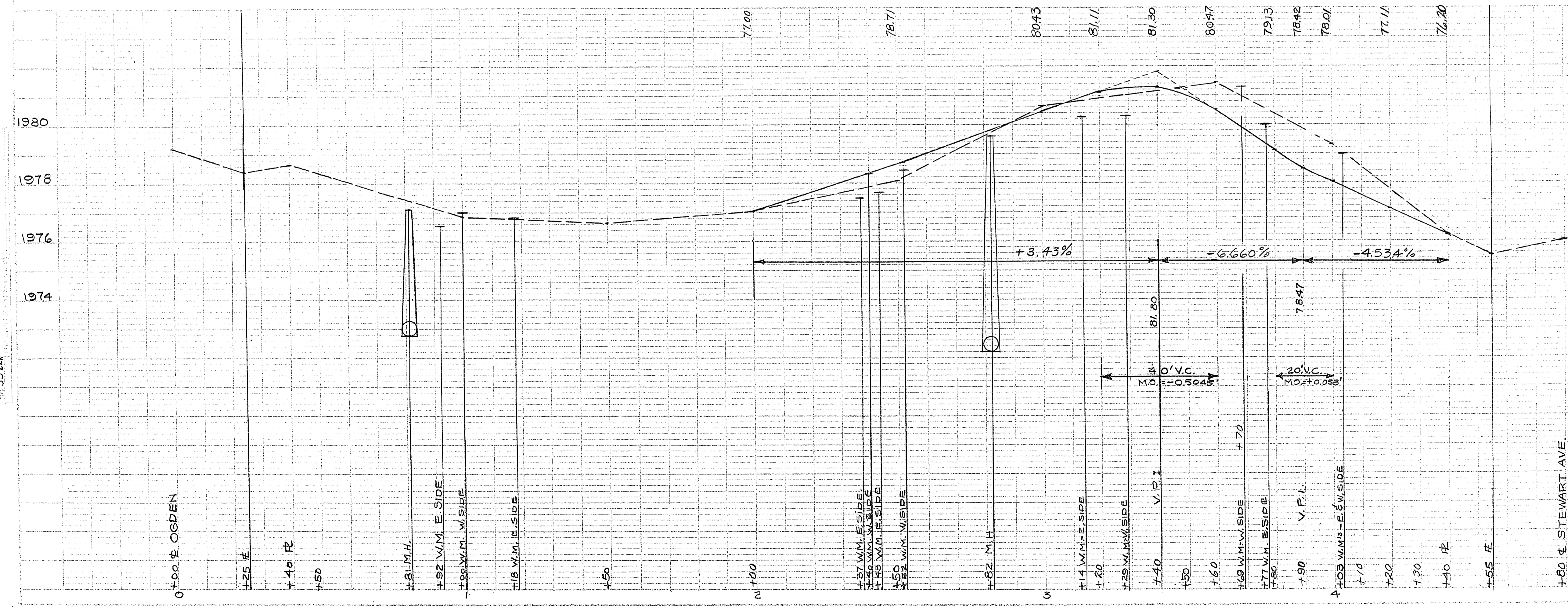
2-54

PLANNING DIVISION  
 CITY OF LAS VEGAS, NEVADA  
 PROJECT NO. 55-22X  
 DATE 9/17/54  
 DRAWN BY SMALL  
 CHECKED BY SMALL  
 APPROVED BY [Signature]  
 CITY ENGINEER



B.M. ELEV. - 1976.20  
 DISC.: CROSS ON T.C. WEST END  
 OF ALLEY RETURN, N.W. CORNER  
 OF INTERSECTION OF ALLEY &  
 STEWART AVE.

PROFESSOR OF CIVIL ENGINEERING  
 UNIVERSITY OF CALIFORNIA  
 CIVIL ENGINEERING DEPARTMENT  
 BERKELEY, CALIF. 94720  
 PROJECT NO. 55-22X  
 DATE 9/17/54  
 DRAWN BY SMALL  
 CHECKED BY SMALL  
 APPROVED BY [Signature]  
 CITY ENGINEER



**CITY OF LAS VEGAS, NEVADA**  
**ENGINEERING DEPT.**

**ALLEY FROM OGDEN TO STEWART  
 BETWEEN 12<sup>TH</sup> & 13<sup>TH</sup> ST.**

DESIGNED BY	LEWIS	DATE	9/17/54
DRAWN BY	SMALL	SCALE	1" = 20' HORIZ. 1" = 2' VERT.
CHECKED BY	SMALL	FIELD BOOK NO.	55-22X
APPROVED	[Signature]	WORK ORDER NO.	50-89-29
CITY ENGR.		DATE	11/4/54
		DRAWING NO.	108-V110