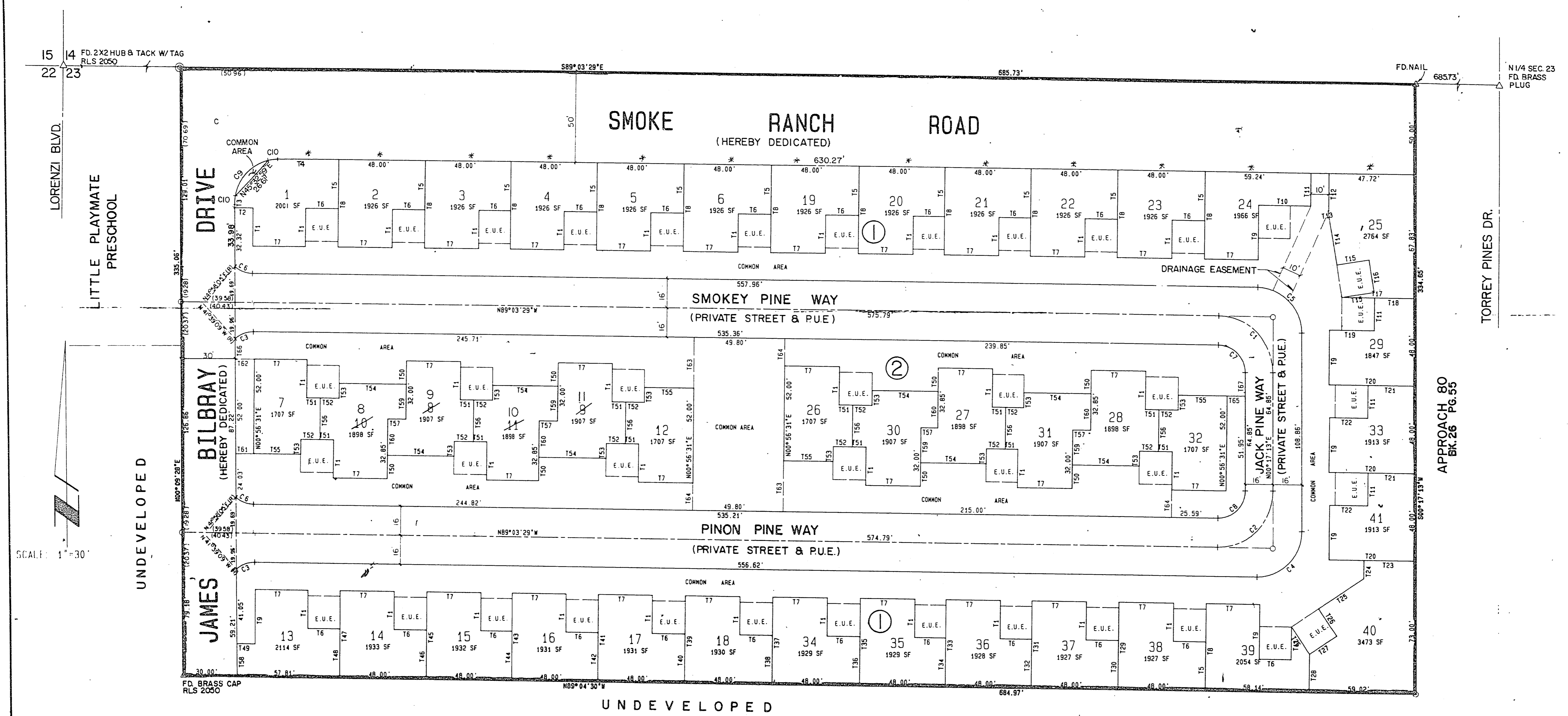


BOOK 871224 BOOK 880208

00360 00488



NUMBERED COURSES

REF. NO.	BEARING	DISTANCE	REF. NO.	BEARING	DISTANCE
T 1	N 0°56'31"E	21.00	T 35	N 0°56'31"E	48.06
T 2	N 89°03'29"W	10.29	T 36	N 0°56'31"E	27.06
T 3	N 0°56'31"E	1.66	T 37	N 0°56'31"E	48.08
T 4	N 89°03'29"W	33.31	T 38	N 0°56'31"E	27.08
T 5	N 0°56'31"E	27.00	T 39	N 0°56'31"E	48.09
T 6	N 89°03'29"W	18.00	T 40	N 0°56'31"E	27.09
T 7	N 0°56'31"E	38.00	T 41	N 0°56'31"E	48.11
T 8	N 0°56'31"E	48.00	T 42	N 0°56'31"E	27.11
T 9	N 0°56'31"E	30.00	T 43	N 0°56'31"E	48.12
T 10	N 89°03'29"W	29.24	T 44	N 0°56'31"E	27.12
T 11	N 0°56'31"E	18.00	T 45	N 0°56'31"E	48.13
T 12	N 0°56'31"E	20.45	T 46	N 0°56'31"E	27.13
T 13	N 81°10'15"W	18.32	T 47	N 0°56'31"E	48.15
T 14	N 8°41'45"W	30.00	T 48	N 0°56'31"E	27.15
T 15	N 81°10'15"W	18.00	T 49	N 89°03'29"W	10.06
T 16	N 8°41'45"W	18.00	T 50	N 0°56'31"E	12.85
T 17	N 89°03'29"W	40.78	T 51	N 89°03'29"W	7.50
T 18	N 89°03'29"W	22.78	T 52	N 89°03'29"W	10.50
T 19	N 89°03'29"W	24.66	T 53	N 0°56'31"E	8.15
T 20	N 89°03'29"W	48.00	T 54	N 89°03'29"W	37.00
T 21	N 89°03'29"W	26.46	T 55	N 89°03'29"W	27.00
T 22	N 89°03'29"W	21.00	T 56	N 0°56'31"E	22.85
T 23	N 89°03'29"W	28.66	T 57	N 89°03'29"W	10.00
T 24	N 0°56'31"E	10.00	T 58	N 0°56'31"E	18.17
T 25	N 56°40'38"E	30.00	T 59	N 0°56'31"E	19.15
T 26	N 33°19'22"W	18.00	T 60	N 0°56'31"E	20.00
T 27	N 56°40'38"E	18.00	T 61	N 89°03'29"W	10.00
T 28	N 0°56'31"E	21.12	T 62	N 89°03'29"W	10.71
T 29	N 0°56'31"E	48.02	T 63	N 0°56'31"E	27.85
T 30	N 0°56'31"E	27.02	T 64	N 0°56'31"E	15.00
T 31	N 0°56'31"E	48.04	T 65	N 89°03'29"W	10.00
T 32	N 0°56'31"E	27.04	T 66	N 0°56'31"E	11.19
T 33	N 0°56'31"E	48.05	T 67	N 0°17'13"E	12.91
T 34	N 0°56'31"E	27.05			

CURVE DATA

CURVE NO.	DELTA	RADIUS	LENGTH	TANGENT
C 1	89°20'43"	31.00	48.34	30.65
C 2	90°39'17"	31.00	49.05	31.36
C 3	42°35'40"	15.00	11.15	5.85
C 4	90°39'17"	25.00	39.56	25.29
C 5	89°20'43"	25.00	38.98	24.72
C 6	41°1'35"	15.00	10.74	5.61
C 7	89°20'43"	15.00	23.39	14.83
C 8	90°39'17"	15.00	23.73	15.17
C 9	64°18'21"	25.00	28.06	15.71
C 10	13°14'21"	25.00	5.78	2.90

* NOTE: Direct vehicular access to Smoke Ranch Road from the rear of the abutting lots is prohibited.

BASIS OF BEARINGS

THE NORTH LINE OF THE NORTHWEST ONE-QUARTER (NW 1/4) SECTION 23, TOWNSHIP 20 SOUTH, RANGE 60 EAST, N.D.M., CLARK COUNTY, NEVADA, BEARS SOUTH 89°03'29" EAST PER RECORD OF SURVEY FILE 37, PAGE 18, OFFICIAL RECORDS OF CLARK COUNTY, NEVADA.

LEGEND

- SET 5/8" REBAR & ALUM. CAP - RLS 5094
- ⊙ SET BRASS CAP IN CONCRETE
- △ MONUMENT FOUND AS INDICATED
- BOUNDARY LINE
- CENTERLINE
- 23 LOT NUMBER
- E.U.E. EXCLUSIVE USE EASEMENT
- ② BLOCK NUMBERS

TOTAL AREA = 5.2696 ACRES ±

TOTAL NO. OF LOTS = 41

AMENDED PLAT OF SMOKE RANCH PINES
 POR. NE 1/4 NW 1/4 SECTION 23, T20S, R60E M.D.M. LAS VEGAS, CLARK COUNTY, NEVADA

JOB NO. 2-527-001-871
 DESIGNED NCH
 DRAWN HP 1000 A600
 COMP.
 CHECKED
 DATE JUNE 1, 1987
 SHEET 2 OF 2 SHEETS

SPARKS, NEVADA
 LAS VEGAS, NEVADA
 SEATTLE, WASHINGTON

BOOK 38 PAGE 83 BOOK 38 PAGE 49 Amended 2737