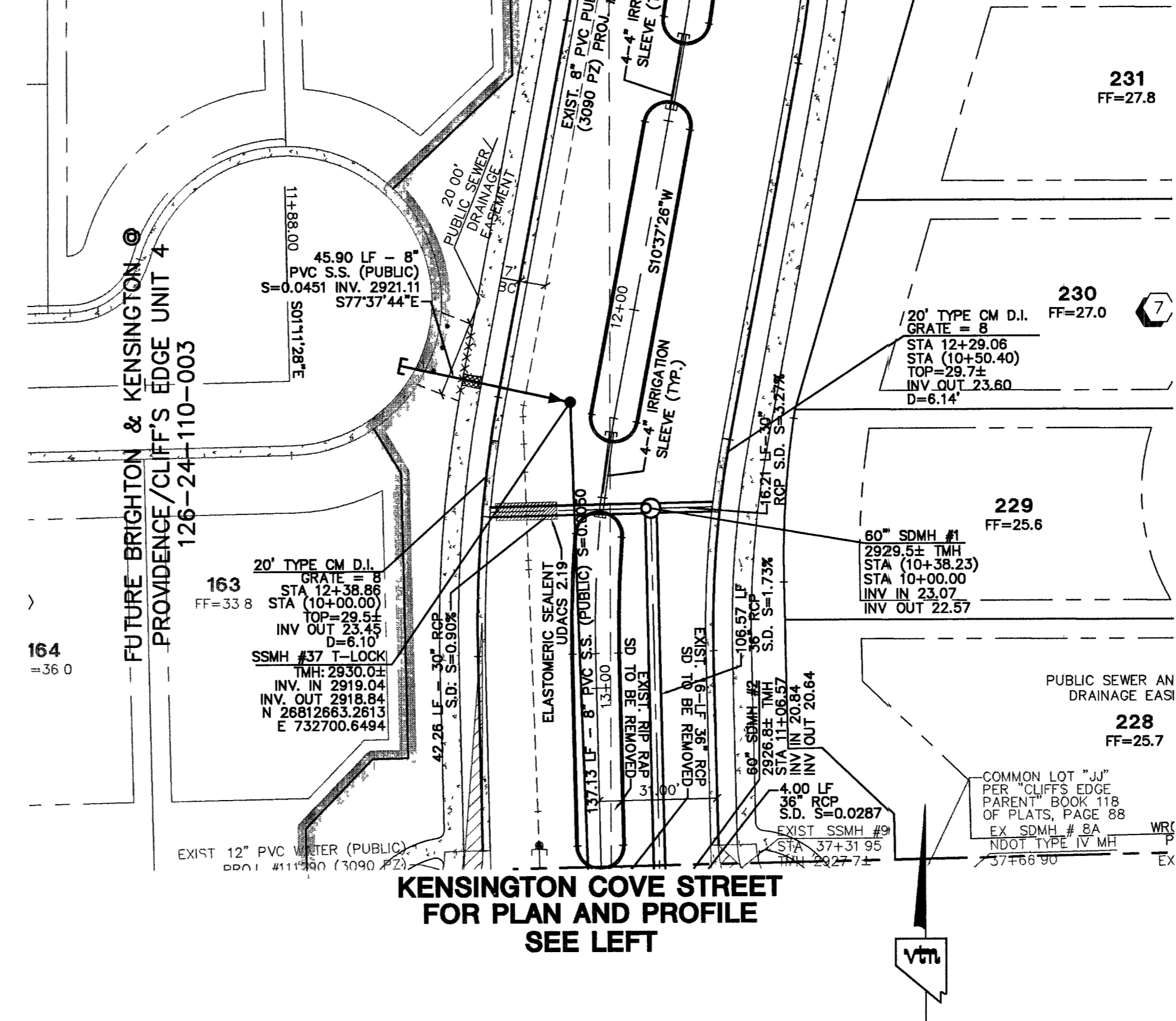
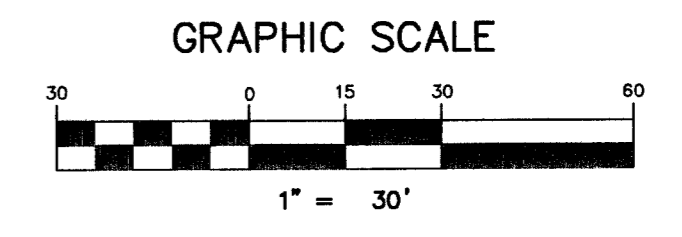
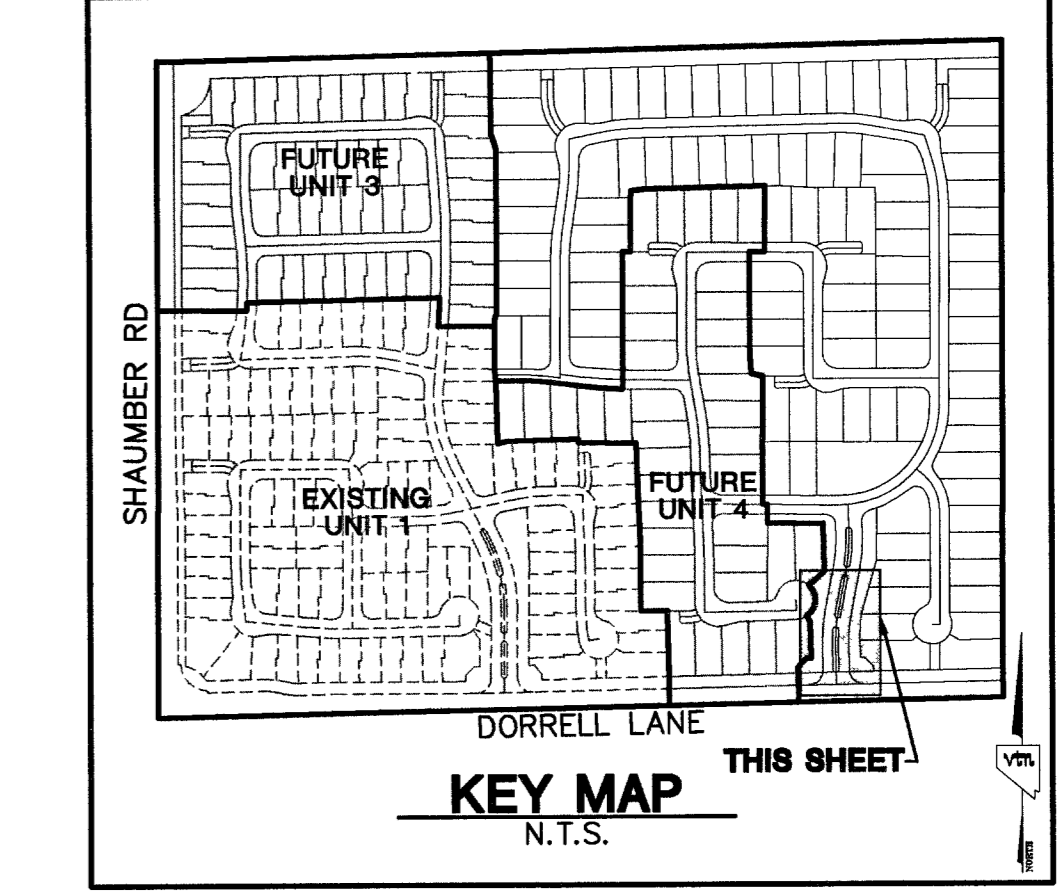
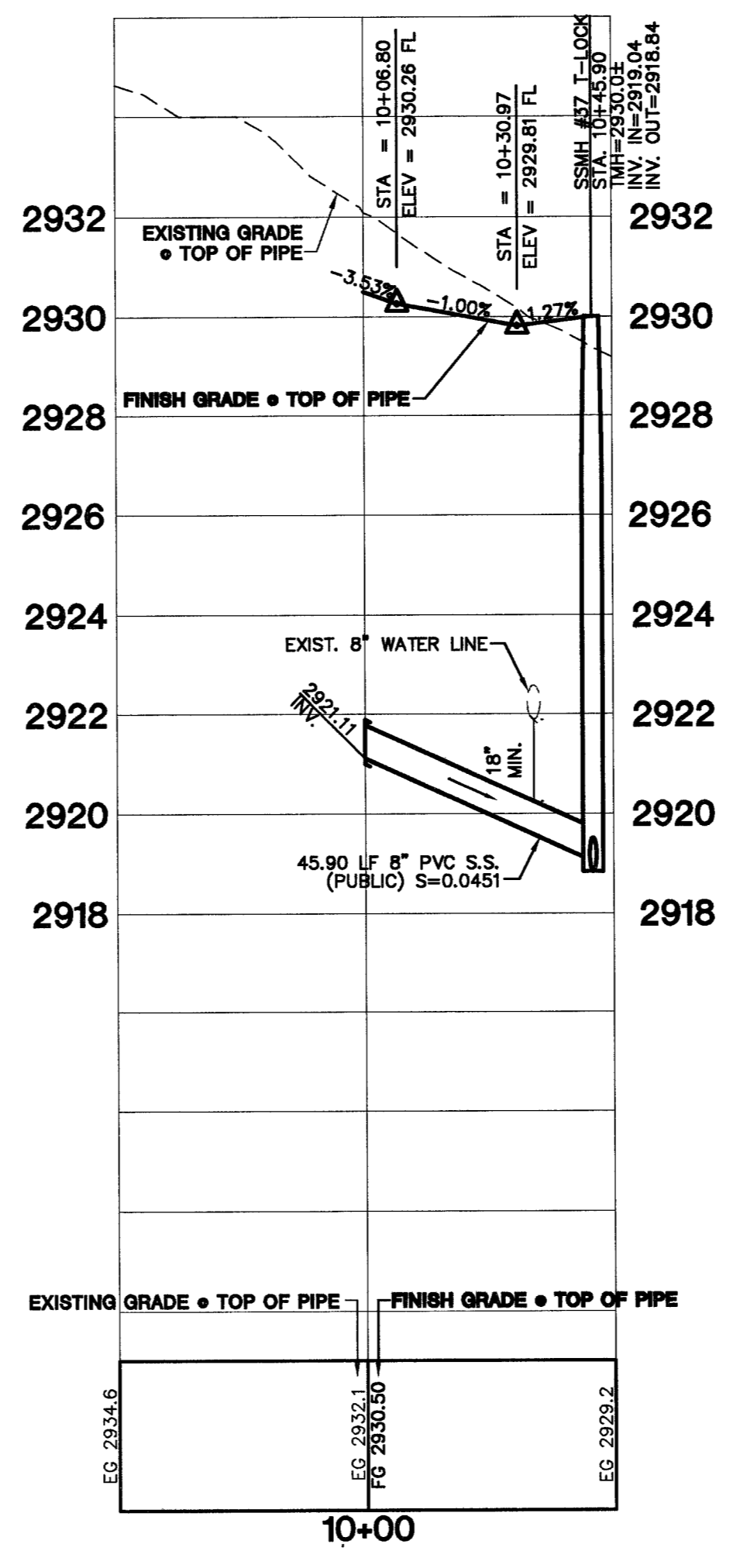
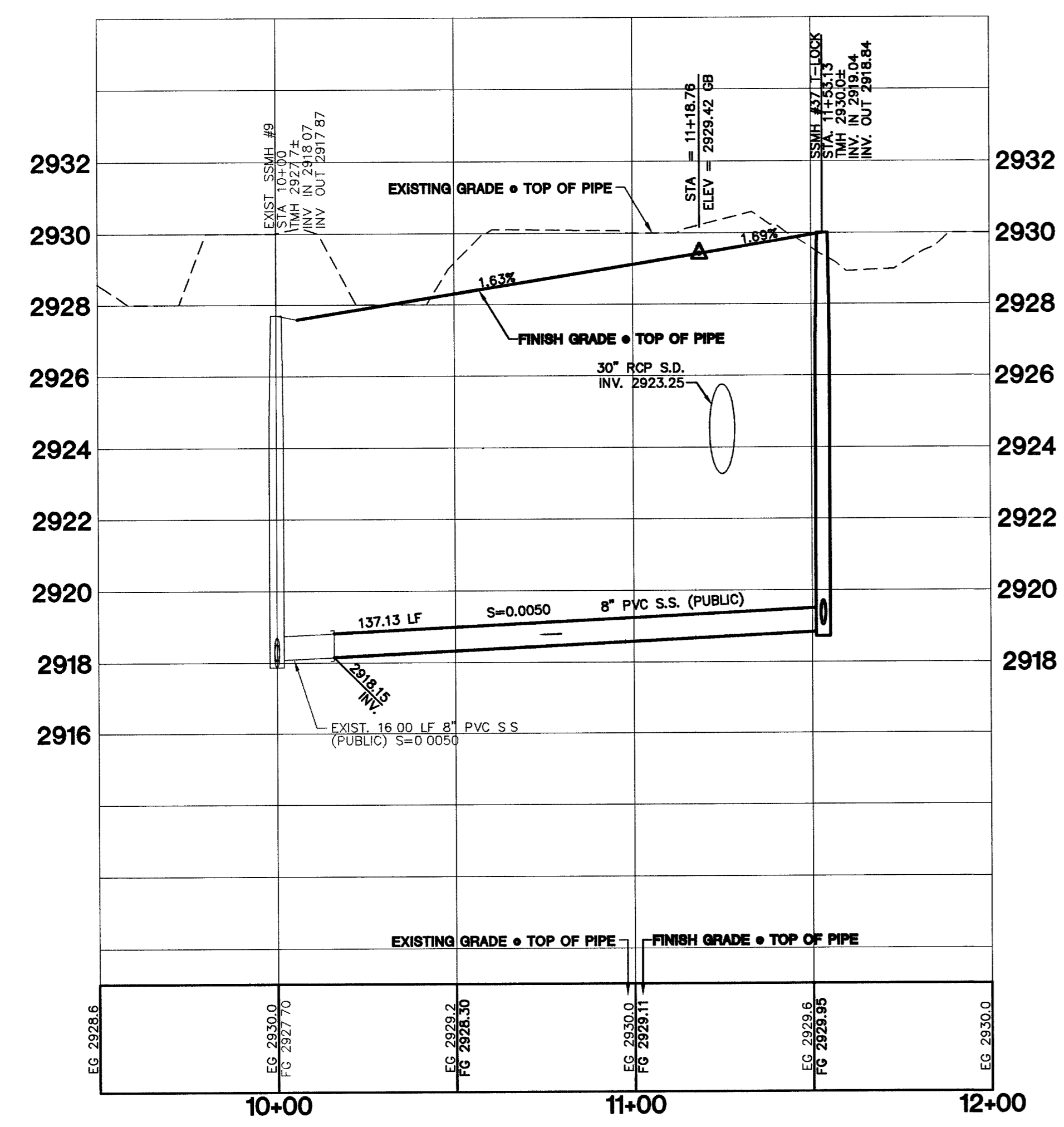


KENSINGTON COVE STREET
(PRIVATE)



EASEMENT



PROJECT BENCHMARK
 DATUM: NORTH AMERICAN VERTICAL DATUM OF 1988 (NAVD88)
 CITY OF LAS VEGAS BENCHMARK: BLV99-13SES
 NAVD88 ELEVATION: 869.606 METERS (2853.03 FEET)
 RIVET AND PLATE IN CONCRETE CYLINDER NW CORNER OF HUALAPAI AND ELKHORN
 NOTE: WHEN THE SURVEYING FOR THIS PROJECT BEGAN, THE ABOVE REFERENCED BENCHMARK BLV99-13SES WAS NOT PUBLISHED. THE BASIS FOR THE DATUM FOR THIS PROJECT IS SHOWN ON RECORD OF SURVEY FILE 124 PAGE 94, CLARK COUNTY BENCHMARK 1000-89S WHICH AT THE TIME OF THE ORIGINAL SURVEY (PRIOR TO THE CURRENT 2003 COUNTY BENCHMARK PUBLISHING) HAD AN ELEVATION OF 2584.61 FEET. TO CONVERT THE CURRENT CITY OF LAS VEGAS BENCHMARK BLV99-13SES TO MATCH THE ORIGINAL PROJECT DATUM, 0.34' NEEDS TO BE ADDED TO THE ELEVATION OF 2853.03 FEET.

BASIS OF BEARINGS
 THE BASIS OF BEARINGS FOR THIS PROJECT IS NORTH 00°08'18" EAST BEING THE EAST LINE OF THE NORTHWEST QUARTER (NE 1/4) OF THE SECTION 24, TOWNSHIP 19 SOUTH, RANGE 59 EAST, M.D.M., CLARK COUNTY, NEVADA, AS SHOWN ON A RECORD OF SURVEY ON FILE IN THE CLARK COUNTY, NEVADA, RECORDER'S OFFICE IN FILE 123 AT PAGE 32.

NOTE:
 ALL DRAINAGE EASEMENTS MUST BE COMMON LOTS & PUBLIC DRAINAGE EASEMENTS TO BE PRIVATELY MAINTAINED BY H.O.A.

NOTES:
 1. ALL PRIVATE STREETS AND PRIVATE DRIVES ARE P.U.E., PUBLIC SEWER EASEMENT, & PUBLIC DRAINAGE EASEMENT TO BE PRIVATELY MAINTAINED BY H.O.A.

CONTRACTOR NOTE:
 CONTRACTOR SHALL VERIFY HORIZONTAL AND VERTICAL LOCATION OF EXISTING UTILITIES AND NOTIFY THE DESIGN ENGINEER IMMEDIATELY OF ANY DISCREPANCIES PRIOR TO CONSTRUCTION.

Avoid overhead power line contact it's costly.

Call before you Overhead

1-702-227-2929

Avoid cutting underground utility lines it's costly.

Call before you Dig

1-800-227-2600

AVOID HITTING UNDERGROUND TRAFFIC SIGNAL SYSTEMS AND STREET LIGHT SYSTEM CONDUITS. IT'S COSTLY CALL BEFORE YOU DO UNDERGROUND.

Call before you Underground

1-702-455-7511
 CLARK COUNTY TRAFFIC OPERATIONS
 AND
 1-702-229-6611
 LAS VEGAS AREA COMPUTERIZED TRAFFIC SYSTEM

PROFILE SCALES:
 HORZ. = 1" = 30'
 VERT. = 1" = 3'

REVISION	DATE	BY	REV	1	2	3	4
<p>CITY OF LAS VEGAS</p> <p>KIMBALL HILL 8 SUNSET WAY, SUITE 101 HENDERSON, NEVADA 89014 (702)438-4382</p> <p>SEWER PLAN AND PROFILE KENSINGTON COVE STREET</p> <p>BRIGHTON & KENSINGTON PROVIDENCE / CLIFFS EDGE UNIT 2</p> <p>2727 SOUTH RAINBOW BOULEVARD LAS VEGAS, NEVADA 89146-5148 PH. (702) 873-7550 FAX (702) 362-2997 PLANNERS • LAND SURVEYORS CONSULTING ENGINEERS</p> <p>EXPIRES 06-30-07</p> <p style="text-align: right;">11/16/05</p>							
<p>SCALE: 1" = 30' HORZ. 1" = 3' VERT.</p>							
<p>SHEET SS14 45 OF 52 SHEETS</p>							
<p>DRAWING NO. 107Y4890-2</p>							