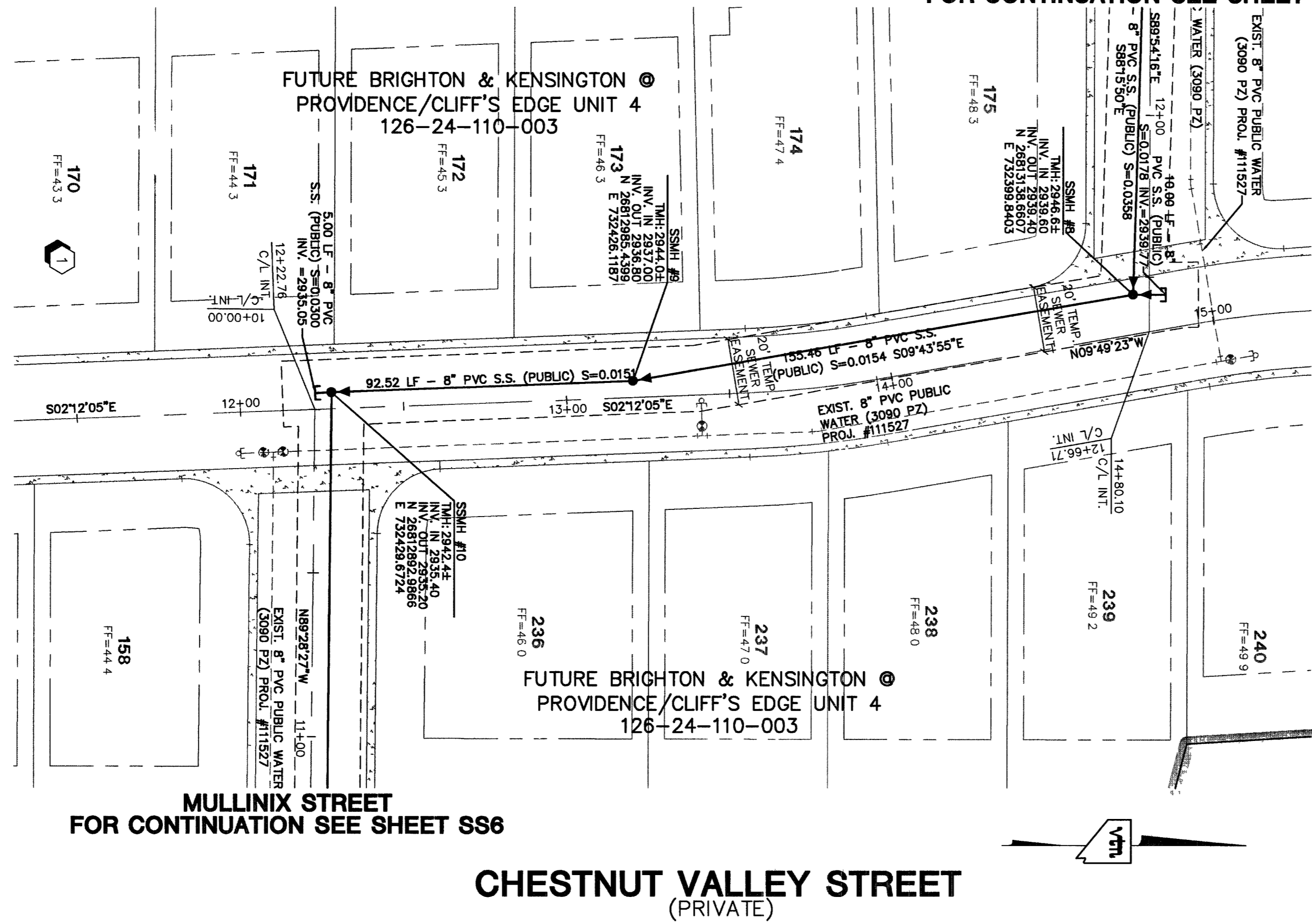
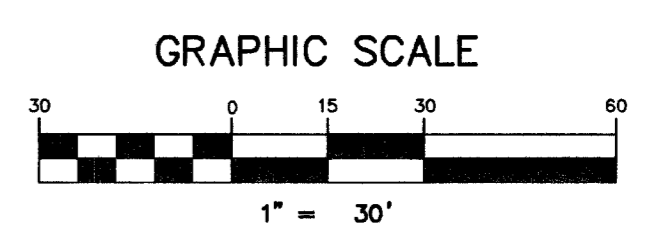
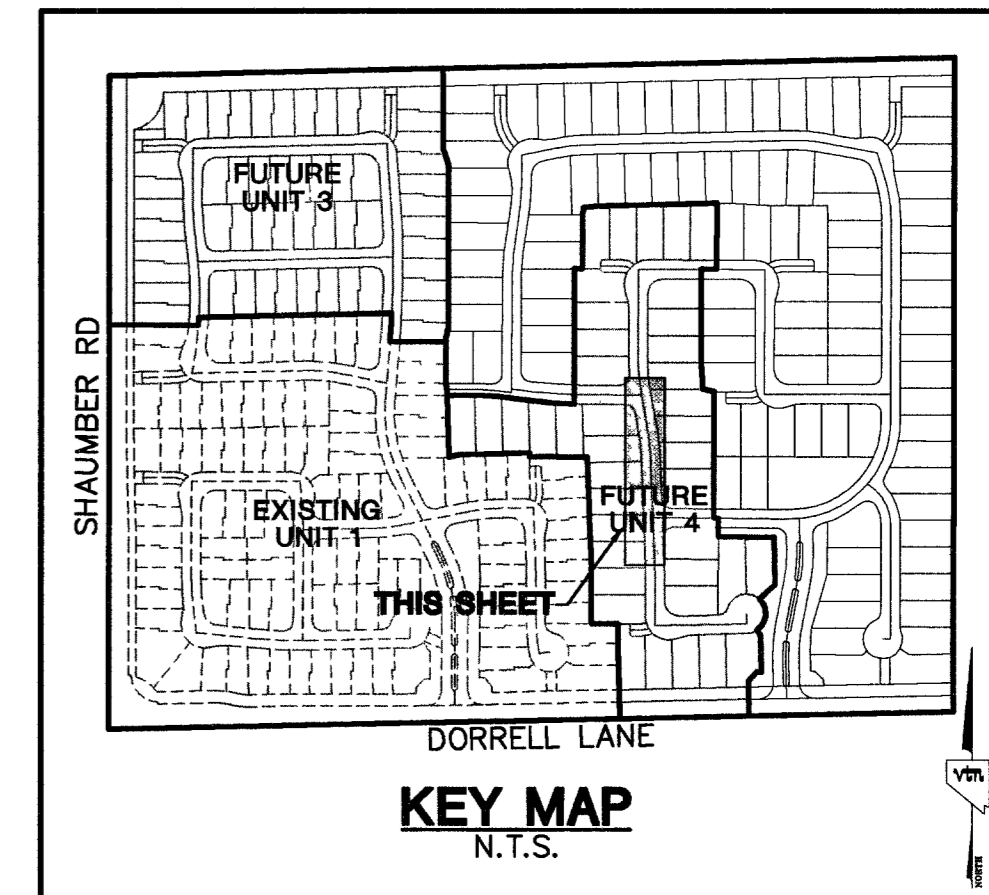


FULBRIGHT AVENUE  
FOR CONTINUATION SEE SHEET SS1



MULLINIX STREET  
FOR CONTINUATION SEE SHEET SS6

CHESTNUT VALLEY STREET  
(PRIVATE)



**PROJECT BENCHMARK**  
 DATUM: NORTH AMERICAN VERTICAL DATUM OF 1988 (NAVD88)  
 CITY OF LAS VEGAS BENCHMARK: BLV99:13SES  
 NAVD88 ELEVATION: 869.606 METERS (2853.03 FEET)  
 IRVET AND PLATE IN CONCRETE CYLINDER NW CORNER OF HUALAPAI AND ELKHORN  
 NOTE: WHEN THE SURVEYING FOR THIS PROJECT BEGAN, THE ABOVE REFERENCED BENCHMARK BLV99:13SES WAS NOT PUBLISHED. THE BASIS FOR THE DATUM FOR THIS PROJECT IS SHOWN ON RECORD OF SURVEY FILE 124 PAGE 94, CLARK COUNTY BENCHMARK 1000-6N6, WHICH AT THE TIME OF THE ORIGINAL SURVEY (PRIOR TO THE CURRENT 2003 COUNTY BENCHMARK PUBLISHING) HAD AN ELEVATION OF 2584.61 FEET. TO CONVERT THE CURRENT CITY OF LAS VEGAS BENCHMARK BLV99:13SES TO MATCH THE ORIGINAL PROJECT DATUM, 0.34' NEEDS TO BE ADDED TO THE ELEVATION OF 2853.03 FEET.

**BASIS OF BEARINGS**  
 THE BASIS OF BEARINGS FOR THIS PROJECT IS NORTH 00°08'16" EAST BEING THE EAST LINE OF THE NORTHWEST QUARTER (NE 1/4) OF THE SECTION 24, TOWNSHIP 19 SOUTH, RANGE 59 EAST, M.D.M., CLARK COUNTY, NEVADA, AS SHOWN ON A RECORD OF SURVEY ON FILE IN THE CLARK COUNTY, NEVADA, RECORDER'S OFFICE IN FILE 123 AT PAGE 32.

**NOTE**  
 ALL DRAINAGE EASEMENTS MUST BE COMMON LOTS & PUBLIC DRAINAGE EASEMENTS TO BE PRIVATELY MAINTAINED BY H.O.A.

**NOTES:**  
 1. ALL PRIVATE STREETS ARE P.U.E., PUBLIC SEWER EASEMENT, & PUBLIC DRAINAGE EASEMENT TO BE PRIVATELY MAINTAINED BY H.O.A.

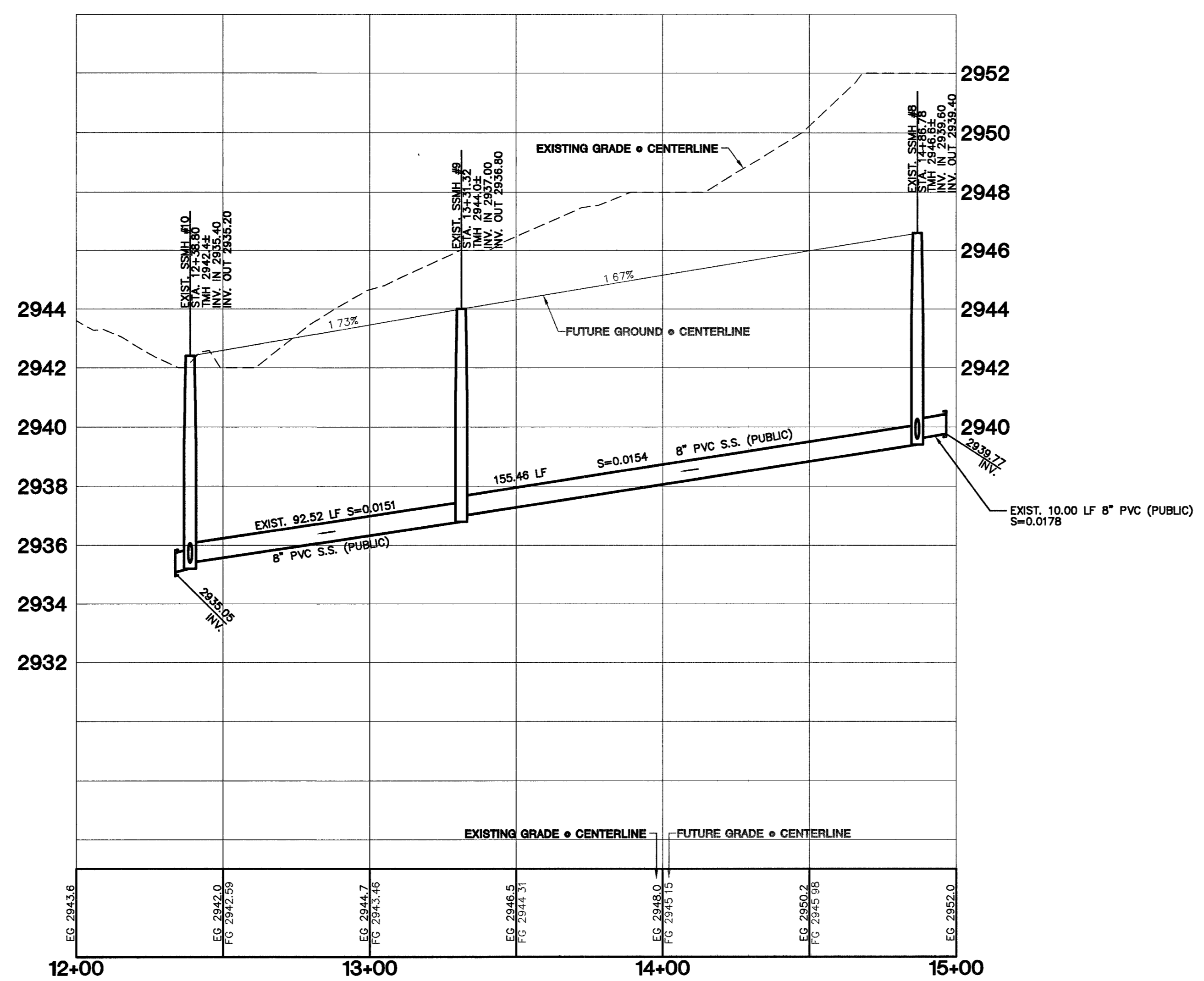
**CONTRACTOR NOTE:**  
 CONTRACTOR SHALL VERIFY HORIZONTAL AND VERTICAL LOCATION OF EXISTING UTILITIES AND NOTIFY THE DESIGN ENGINEER IMMEDIATELY OF ANY DISCREPANCIES PRIOR TO CONSTRUCTION.

Avoid overhead power lines contact it's costly  
**Call before you Overhead**  
 1-702-227-2929

Avoid cutting underground utility lines it's costly  
**Call before you Dig**  
 1-800-227-2600

AVOID HITTING UNDERGROUND TRAFFIC SIGNAL SYSTEMS AND STREET LIGHT SYSTEM CONDUITS  
 IT'S COSTLY CALL BEFORE YOU DO UNDERGROUND  
**Call before you Underground**  
 1-702-455-7511  
 CLARK COUNTY TRAFFIC OPERATIONS AND  
 1-702-229-6611  
 LAS VEGAS AREA COMPUTERIZED TRAFFIC SYSTEM

**PROFILE SCALES:**  
 HORZ. = 1"=30'  
 VERT. = 1"=3'



7	REVISION	DATE	BY
6			
5			
4			
3			
2			
1			

CITY OF LAS VEGAS

**KIMBALL HILL**  
 8 SUNSET WAY, SUITE 101  
 HENDERSON, NEVADA 89014  
 (702) 436-4582

2727 SOUTH RAINBOW BOULEVARD LAS VEGAS, NEVADA 89146-5148  
 PH. (702) 873-7550 FAX (702) 362-2587

CONSULTING ENGINEERS • PLANNERS • LAND SURVEYORS

**SEWER PLAN AND PROFILE  
 CHESTNUT VALLEY STREET**

**BRIGHTON & KENSINGTON  
 PROVIDENCE / CLIFFS EDGE  
 UNIT 2**

DRAWN BY: TP 2/25/05

DESIGNED BY: TP 2/25/05

CHECKED BY: CRC 2/25/05

PROJECT NO: 5399-2 SCALE: 1"=30' HORIZ. 1"=3' VERT.

EXPIRES 06-30-07

PROFESSIONAL ENGINEER STATE OF NEVADA  
 CIVIL  
 73956

1/18/05

SHEET  
**SS13**  
 44 OF 52 SHEETS

DRAWING NO.  
 1074890-2