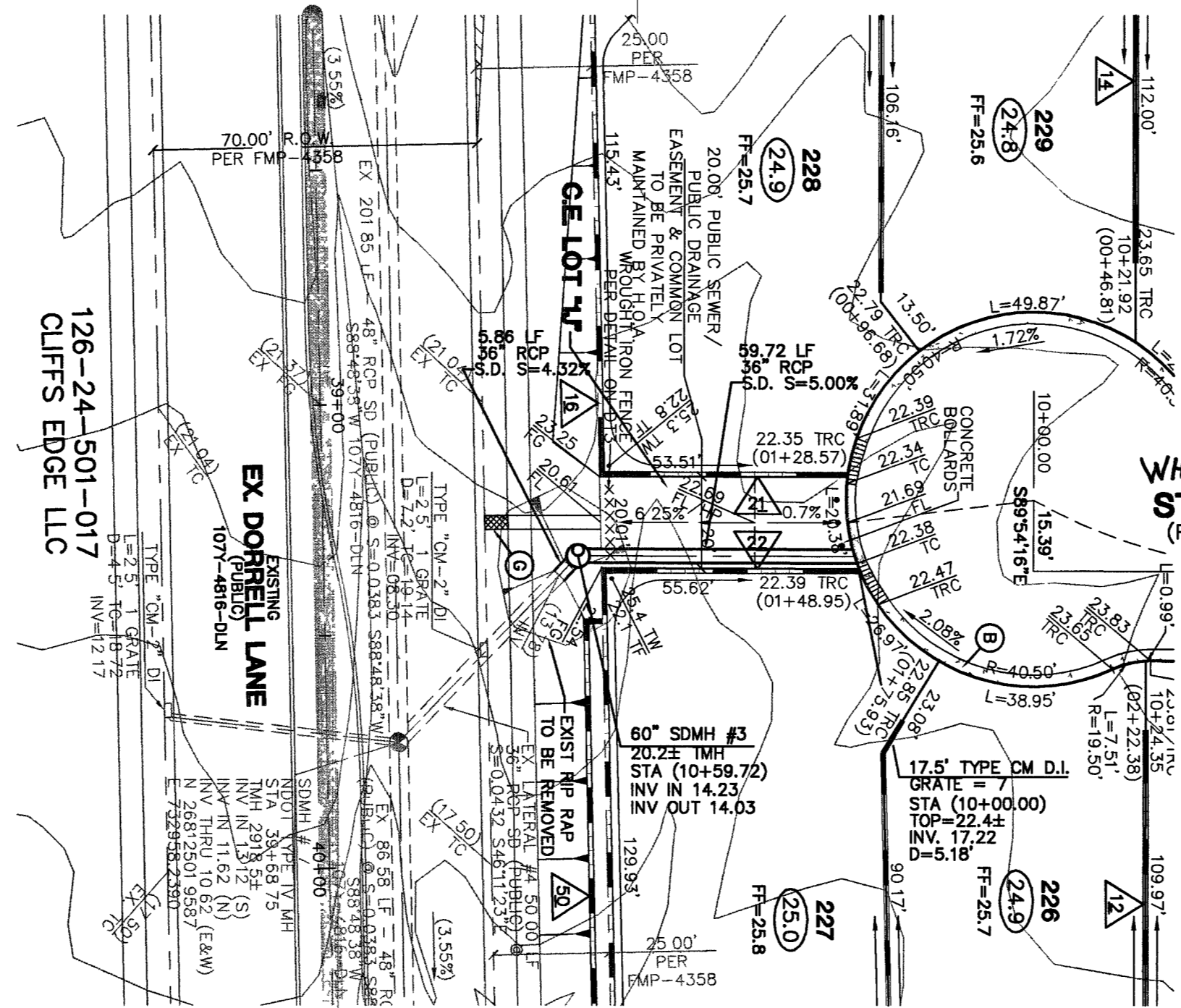
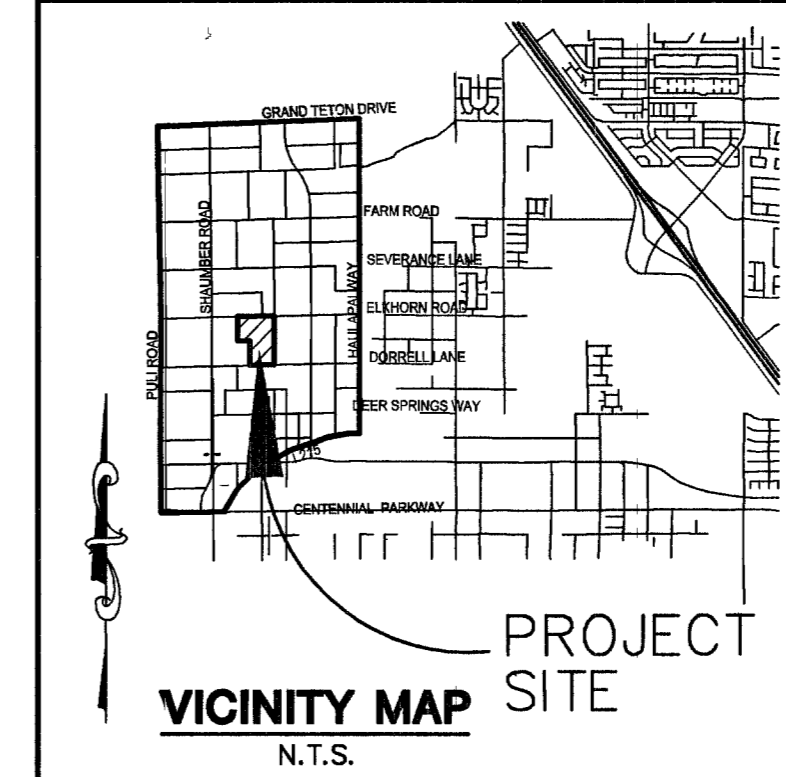
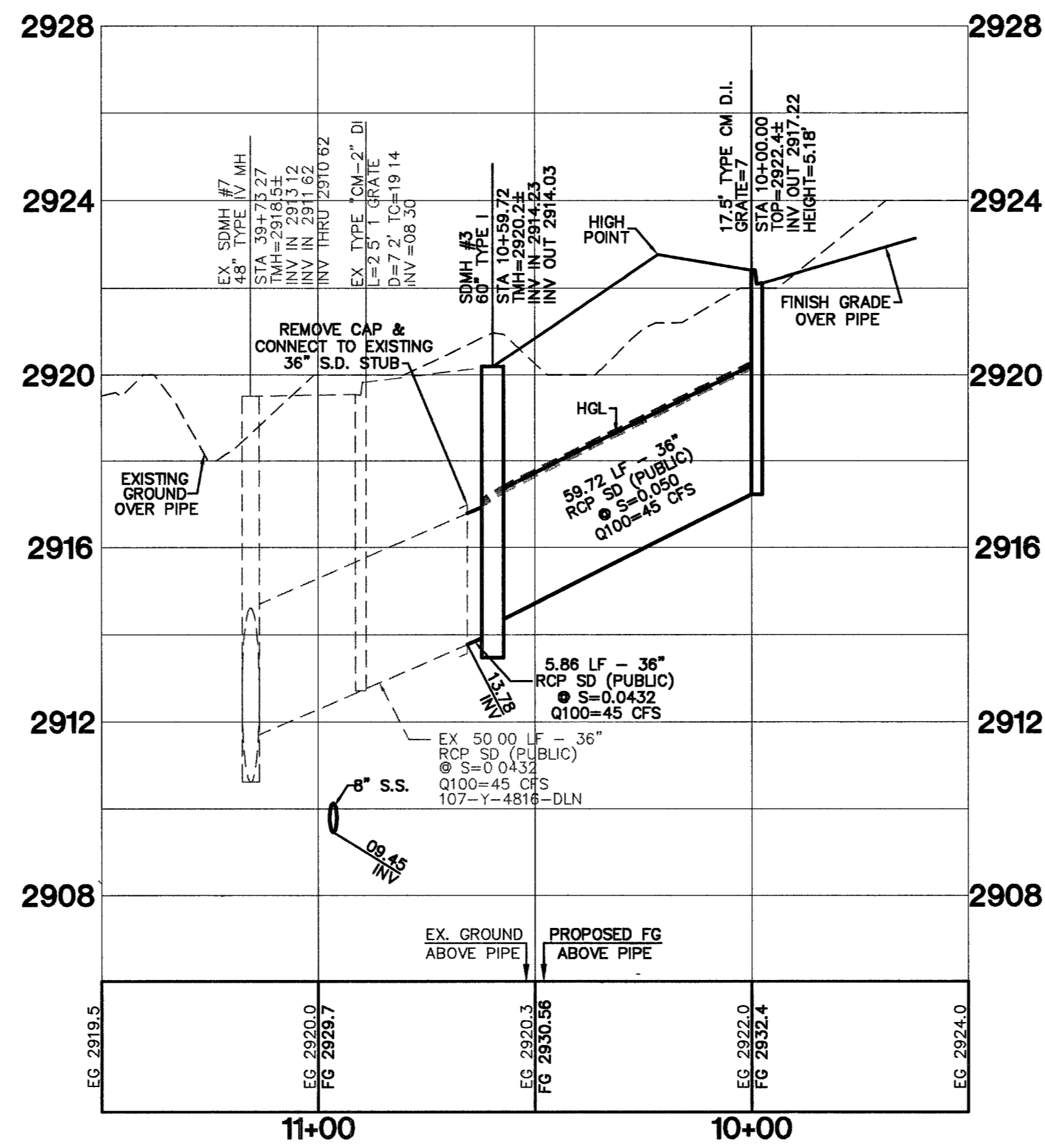
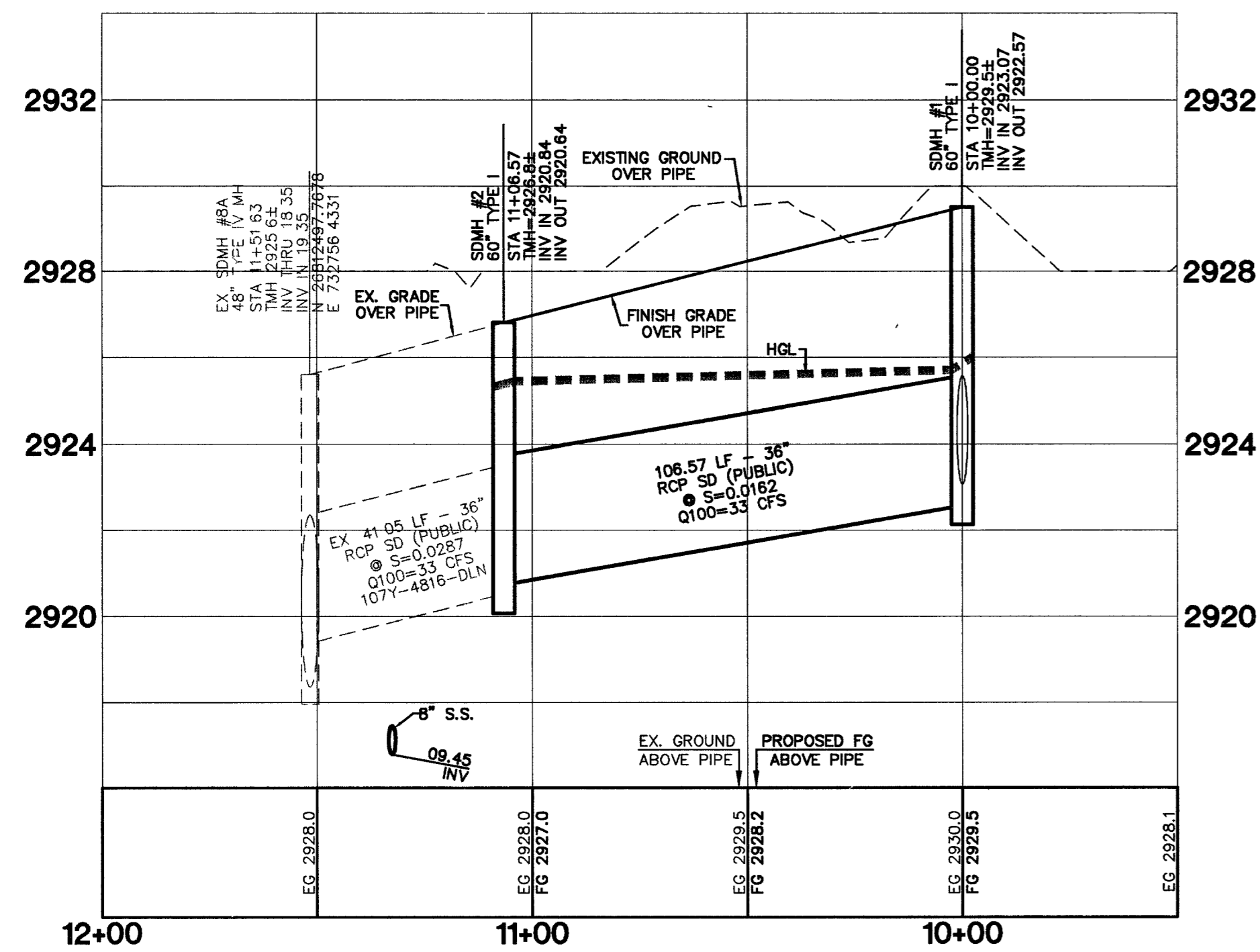


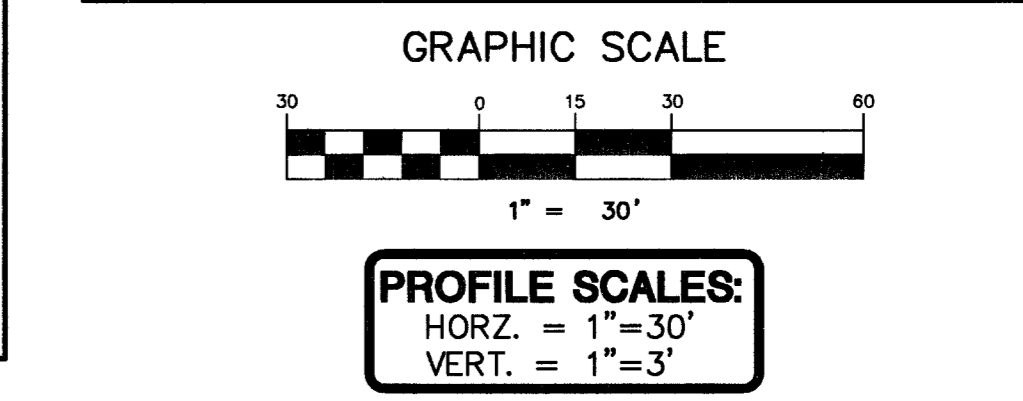
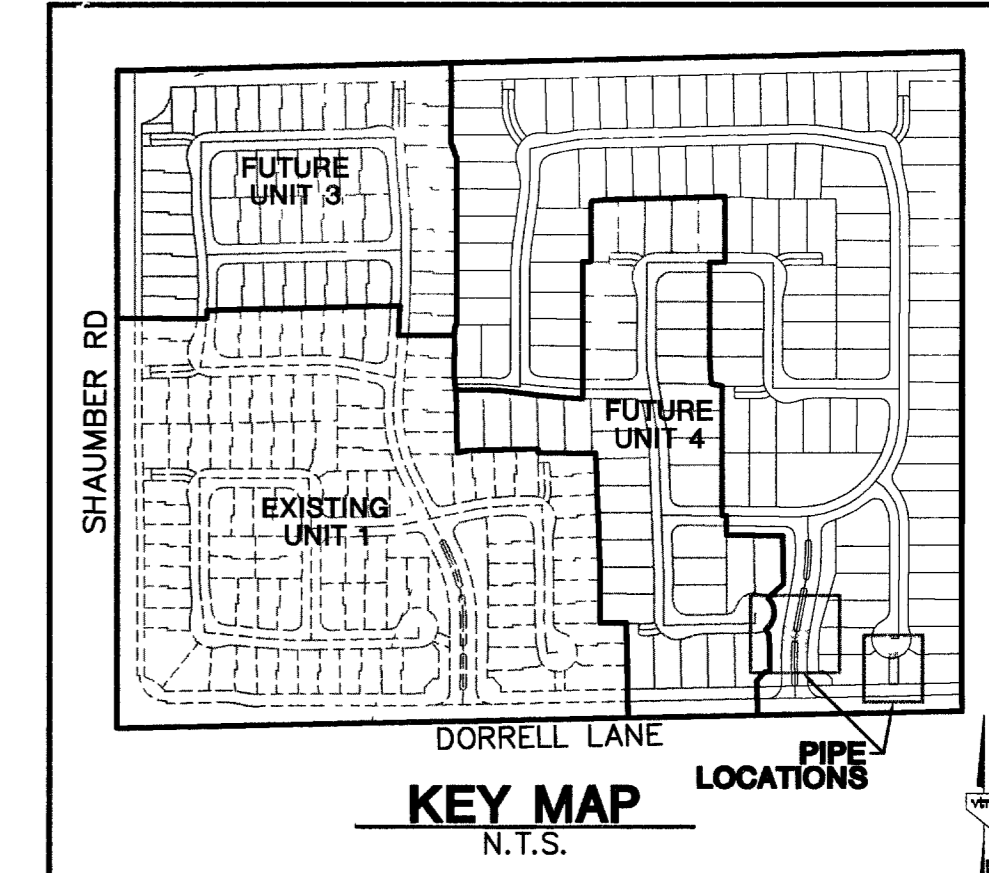
36" STORM DRAIN LATERAL



36" STORM DRAIN EAST LATERAL



- CONSTRUCTION NOTES**
- (A) CONSTRUCT 24" "L" TYPE CURB & GUTTER PER STD. DWG. NO. 216
 - (B) CONSTRUCT 30" "ROLL" TYPE CURB & GUTTER PER STD. DWG. NO. 217A
 - (C) CONSTRUCT "A" TYPE ISLAND CURB PER STD. DWG. NO. 219
 - (D) CONSTRUCT CONCRETE CROSS GUTTER PER STD. DWG. NO. 228
 - (E) CONSTRUCT 4" CONCRETE SIDEWALK PER STD. DWG. NO. 234
 - (F) CONSTRUCT WHEEL CHAIR RAMP PER STD. DWG. NO. 235 CASE 1
 - (G) CONSTRUCT 2" WIDE UNDER SIDEWALK DRAIN PER STD. DWG. NO. 236
 - (H) CONSTRUCT DEPRESSED CURB SECTION PER DETAIL ON SHEET DT1
 - (I) CONSTRUCT 10" "L" TO "ROLL" CURB TRANSITION PER DETAIL ON SHEET DT1.



PROJECT BENCHMARK
 DATUM: NORTH AMERICAN VERTICAL DATUM OF 1988 (NAVD88)
 CITY OF LAS VEGAS BENCHMARK: BLV99-13SES
 NAVD88 ELEVATION: 888.608 METERS (2916.53 FEET)
 RIVET AND PLATE IN CONCRETE CYLINDER NW CORNER OF HUALAPAI AND ELKHORN

NOTE: WHEN THE SURVEYING FOR THIS PROJECT BEGAN, THE ABOVE REFERENCED BENCHMARK BLV99-13SES WAS NOT PUBLISHED, THE BASIS FOR THE DATUM FOR THIS PROJECT IS SHOWN ON RECORD OF SURVEY FILE 124 PAGE 34, CLARK COUNTY BENCHMARK 1C00-6N6, WHICH AT THE TIME OF THE ORIGINAL SURVEY (PRIOR TO THE CURRENT 2003 COUNTY BENCHMARK PUBLISHING) HAD AN ELEVATION OF 2884.61 FEET. TO CONVERT THE CURRENT CITY OF LAS VEGAS BENCHMARK BLV99-13SES TO MATCH THE ORIGINAL PROJECT DATUM, 0.34' NEEDS TO BE ADDED TO THE ELEVATION OF 2883.03 FEET.

BASIS OF BEARINGS
 THE BASIS OF BEARINGS FOR THIS PROJECT IS NORTH 00°08'16" EAST BEING THE EAST LINE OF THE NORTHWEST QUARTER (NE 1/4) OF THE SECTION 24, TOWNSHIP 19 SOUTH, RANGE 58 EAST, M.D.M., CLARK COUNTY, NEVADA, AS SHOWN ON A RECORD OF SURVEY ON FILE IN THE CLARK COUNTY, NEVADA, RECORDER'S OFFICE IN FILE 123 AT PAGE 32.

NOTE:
 ALL DRAINAGE EASEMENTS MUST BE COMMON LOTS & PUBLIC DRAINAGE EASEMENTS TO BE PRIVATELY MAINTAINED BY H.O.A.

NOTES:
 1. ALL PRIVATE STREETS AND PRIVATE DRIVES ARE P.U.E. PUBLIC SEWER EASEMENT & PUBLIC DRAINAGE EASEMENT TO BE PRIVATELY MAINTAINED BY H.O.A.
 2. SEE SHEET DT1 FOR SECTIONS AND DETAILS.

HC RAMP DATA

NO.	"A"	"B"	CASE
	"B"	"B"	

CUT = 60,243 C.Y.
 FILL = 64,914 C.Y.
 (UNADJUSTED)

"I" CERTIFY THAT THIS GRADING PLAN IS IN CONFORMANCE WITH THE APPROVED DRAINAGE STUDY ON FILE AT CITY OF LAS VEGAS, NEVADA FOR THIS PROJECT., DS3673

Christopher M. Grubbs 11/18/05
 CHRISTOPHER M. GRUBBS DATE
 P.E. NO. 13896

CONTRACTOR NOTE:
 CONTRACTOR SHALL VERIFY HORIZONTAL AND VERTICAL LOCATION OF EXISTING UTILITIES AND NOTIFY THE DESIGN ENGINEER IMMEDIATELY OF ANY DISCREPANCIES PRIOR TO CONSTRUCTION.

Avoid overhead power line contact. It's costly.
Call before you Overhead
 1-702-227-2929

Avoid cutting underground utility lines. It's costly.
Call before you Dig
 1-800-227-2600

Avoid hitting underground traffic signal systems and street light systems. Conduits are costly. Call before you dig underground.
Call before you Underground
 1-702-455-7511
 CLARK COUNTY TRAFFIC OPERATIONS
 1-702-229-6611
 LAS VEGAS AREA COMPUTERIZED TRAFFIC SYSTEM

REVISION

NO.	DATE	BY
7		
6		
5		
4		
3		
2		
1		

CITY OF LAS VEGAS

KIMBALL HILL
 8 SUNSET WAY, SUITE 101
 HENDERSON, NEVADA 89014
 (702) 436-4582

STORM DRAIN PLAN & PROFILE
36" EAST & WEST PIPES

BRIGHTON & KENSINGTON
PROVIDENCE / CLIFFS EDGE
UNIT 2

2727 SOUTH RAINBOW BOULEVARD LAS VEGAS, NEVADA 89146-5148
 PH (702) 873-7550 FAX (702) 382-2597
 CONSULTING ENGINEERS & PLANNERS • LAND SURVEYORS

nvada

DRAWN BY: BLM/JP 2/25/05
 DESIGNED BY: BLM/JP 2/25/05
 CHECKED BY: CRG 2/25/05
 PROJECT NO: 5399-2
 SCALE: 1"=30' HORIZ.
 1"=3' VERT.

PROFESSIONAL ENGINEER STATE OF NEVADA
 CHRISTOPHER M. GRUBBS
 CIVIL
 No. 73956
 EXPIRES 06-30-07 11/18/05

SHEET
SD2
 52 OF 52 SHEETS
 DRAWING NO.
 10744890-2