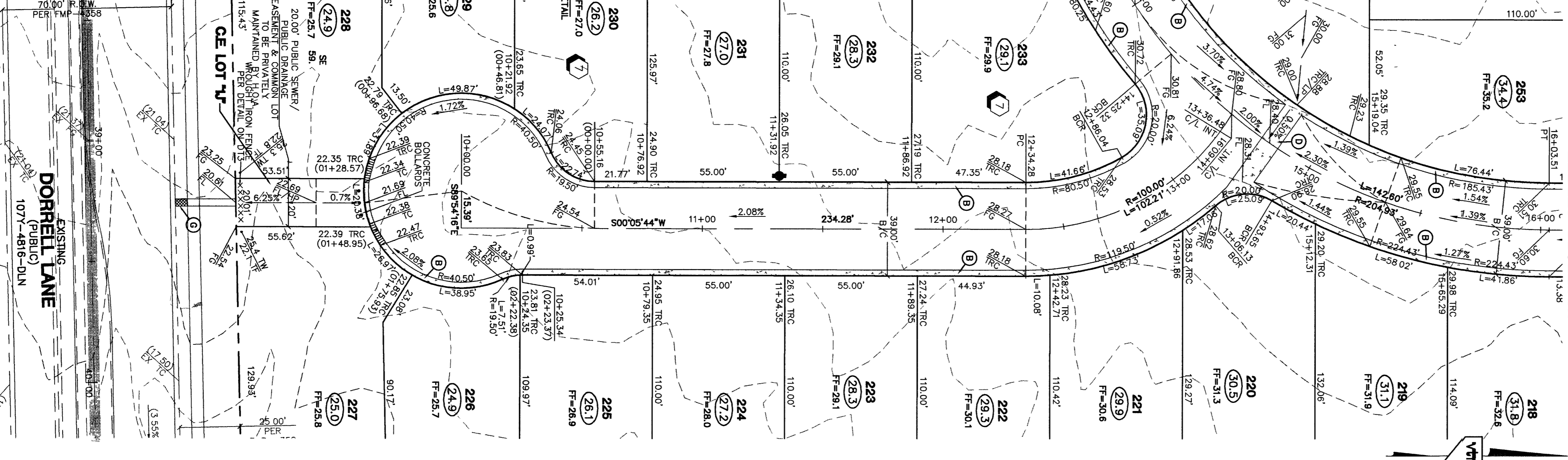


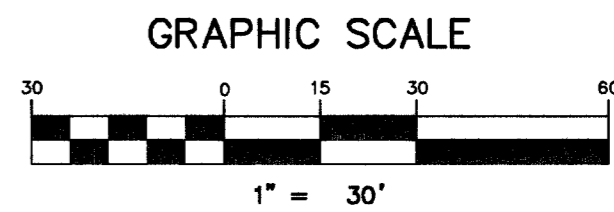
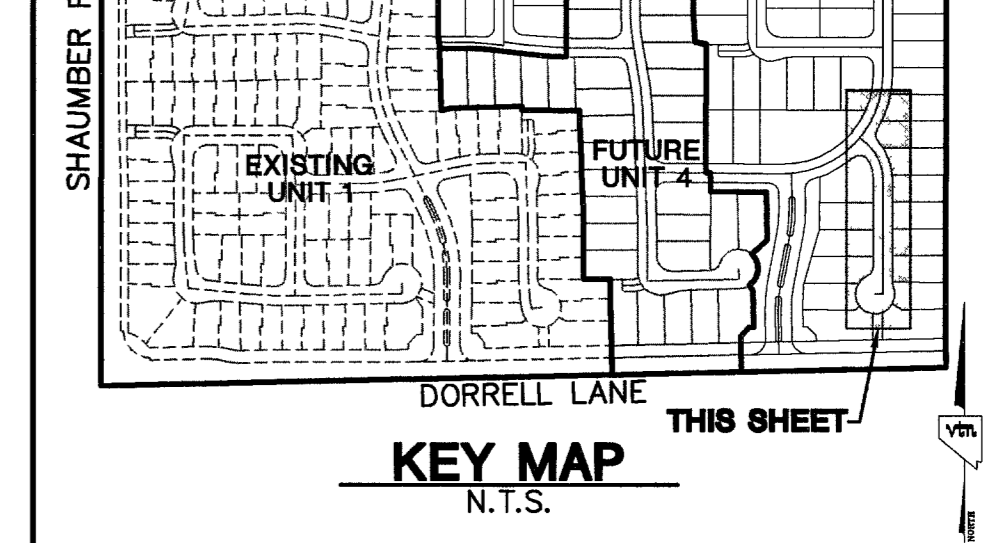
126-24-501-017
CLIFFS EDGE LLC

DORRELL LANE
(PUBLIC)

CE LOT 'J'



WHITFORD STREET
FOR CONTINUATION SEE SHEET ST10



PROJECT BENCHMARK
 DATUM: NORTH AMERICAN VERTICAL DATUM OF 1988 (NAVD88)
 CITY OF LAS VEGAS BENCHMARK: BLV99-13SES
 NAVD88 ELEVATION: 869.608 METERS (2853.03 FEET)
 RIVET AND PLATE IN CONCRETE CYLINDER NW CORNER OF HUALAPAI AND ELKHORN
 NOTE: WHEN THE SURVEYING FOR THIS PROJECT BEGAN, THE ABOVE REFERENCED BENCHMARK BLV99-13SES WAS NOT PUBLISHED. THE BASIS FOR THE DATUM FOR THIS PROJECT IS SHOWN ON RECORD OF SURVEY FILE 124 PAGE 84, CLARK COUNTY BENCHMARK 1C00-6NS, WHICH AT THE TIME OF THE ORIGINAL SURVEY (PRIOR TO THE CURRENT 2003 COUNTY BENCHMARK PUBLISHING) HAD AN ELEVATION OF 2284.61 FEET. TO CONVERT THE CURRENT CITY OF LAS VEGAS BENCHMARK BLV99-13SES TO MATCH THE ORIGINAL PROJECT DATUM, 0.34' NEEDS TO BE ADDED TO THE ELEVATION OF 2853.03 FEET.

BASIS OF BEARINGS
 THE BASIS OF BEARINGS FOR THIS PROJECT IS NORTH 00°08'16\"/>

NOTE:
 ALL DRAINAGE EASEMENTS MUST BE COMMON LOTS & PUBLIC DRAINAGE EASEMENTS TO BE PRIVATELY MAINTAINED BY H.O.A.

NOTES:
 1. ALL PRIVATE STREETS AND PRIVATE DRIVES ARE P.U.I.E., PUBLIC SEWER EASEMENT, & PUBLIC DRAINAGE EASEMENT TO BE PRIVATELY MAINTAINED BY H.O.A.

CONTRACTOR NOTE:
 CONTRACTOR SHALL VERIFY HORIZONTAL AND VERTICAL LOCATION OF EXISTING UTILITIES AND NOTIFY THE DESIGN ENGINEER IMMEDIATELY OF ANY DISCREPANCIES PRIOR TO CONSTRUCTION.

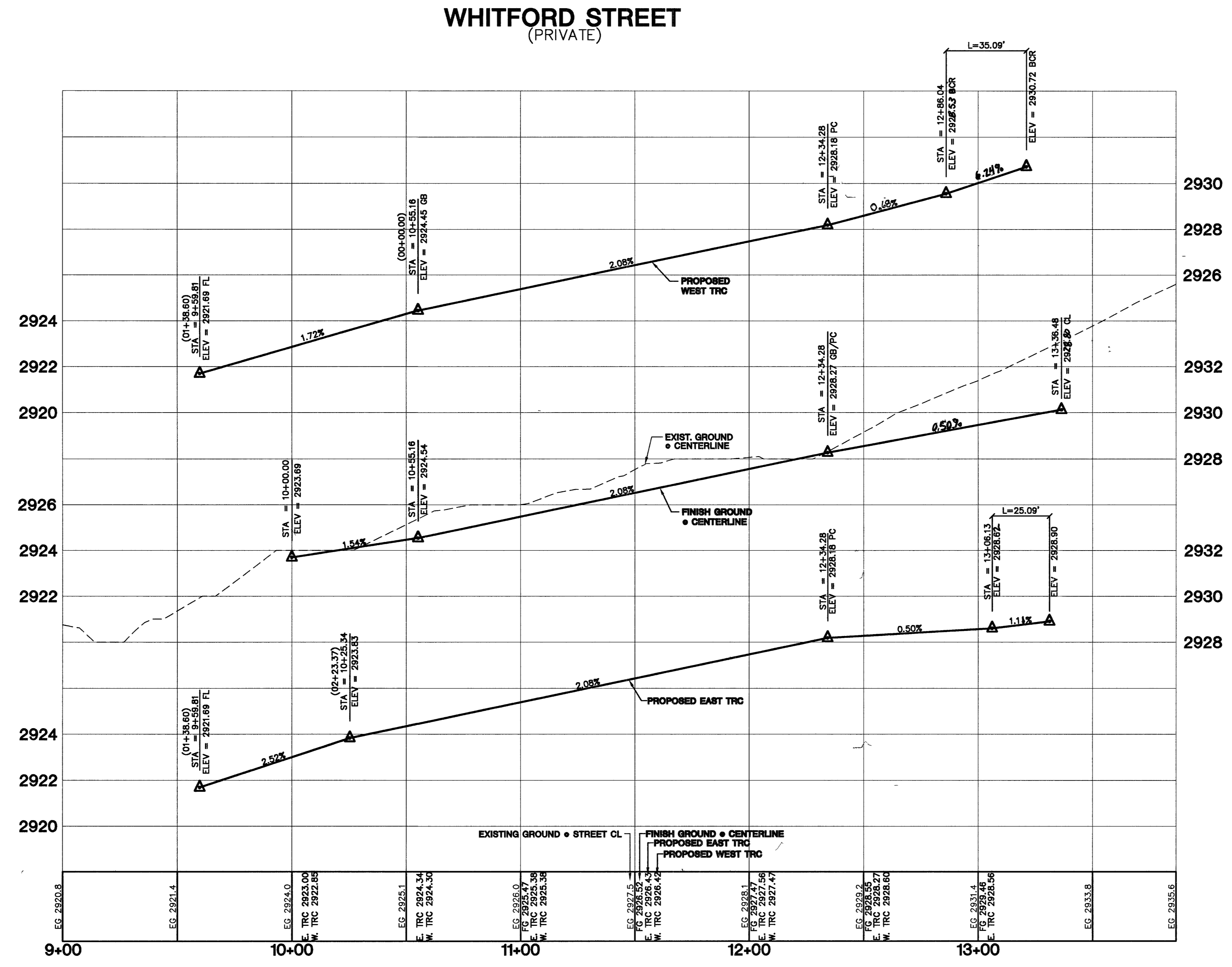
Avoid overhead power line contact. It's costly.
Call before you Overhead
 1-702-227-2929

Avoid cutting underground utility lines. It's costly.
Call before you Dig
 1-800-227-2600

Call before you Underground
 1-702-455-7511
 CLARK COUNTY TRAFFIC OPERATIONS AND
 1-702-229-6611
 LAS VEGAS AREA COMPUTERIZED TRAFFIC SYSTEM

CONSTRUCTION NOTES
 (1) CONSTRUCT 30\"/>

PROFILE SCALES:
 HORZ. = 1\"/>



NO.	DATE	BY	REVISION
1			REV
2			2
3			3
4			4
5			5
6			6
7			7

KIMBALL HILL
 8 SUNSET WAY, SUITE 101
 HENDERSON, NEVADA 89014
 (702) 438-4882

nevada
 CONSULTING ENGINEERS • PLANNERS • LAND SURVEYORS

CITY OF LAS VEGAS
 2727 SOUTH RAINBOW BOULEVARD LAS VEGAS, NEVADA 89146-5148
 PH. (702) 873-7550 FAX (702) 362-2597

STREET PLAN AND PROFILE
 WHITFORD STREET

KENSINGTON • **CLIFFS EDGE**
 PROVIDENCE / UNIT 2

DRAWN BY:	TP	2/25/05
DESIGNED BY:	TP	2/25/05
CHECKED BY:	CRG	2/25/05
PROJECT NO.:	5292-2	SCALE: 1\"/>

EXPIRES 06-30-07

PROFESSIONAL ENGINEER STATE OF NEVADA
 CHRISTOPHER J. BRIDGES
 No. 13958 CIVIL

SHEET
ST8
 26 OF 52 SHEETS
 DRAWING NO.
 10744890-2

85655