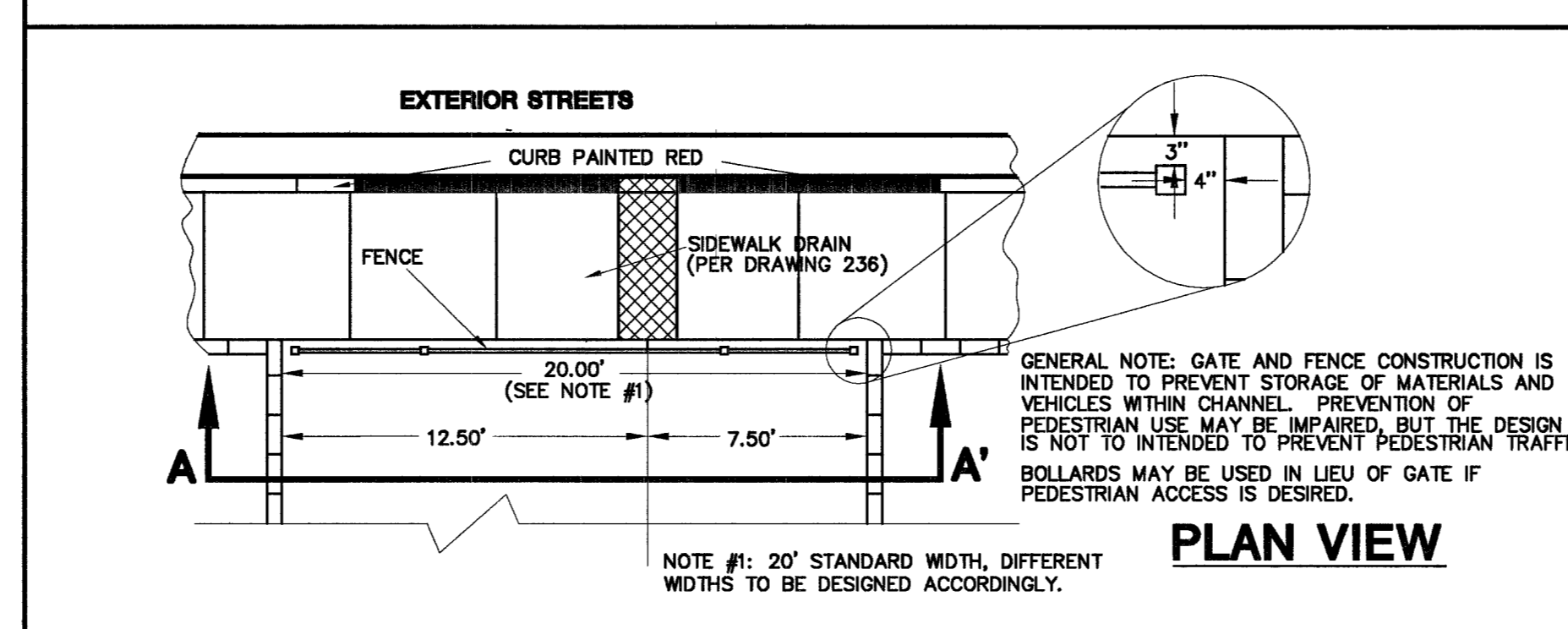
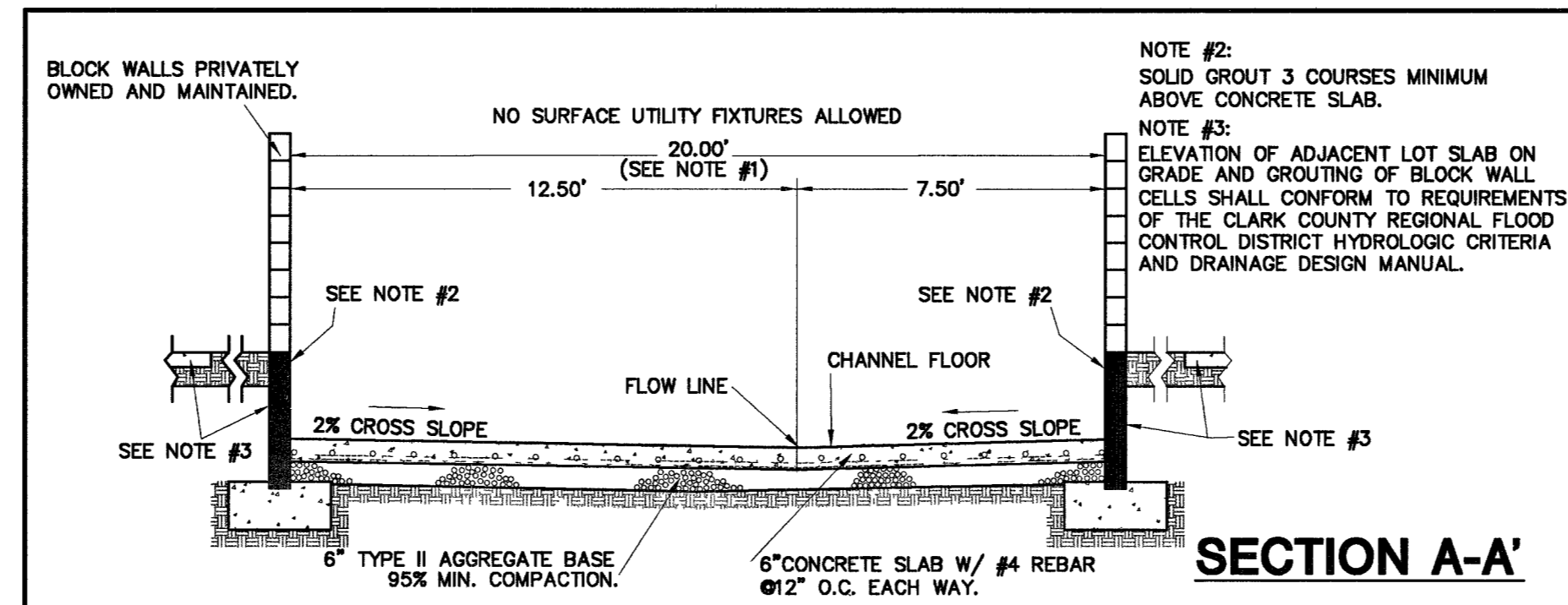
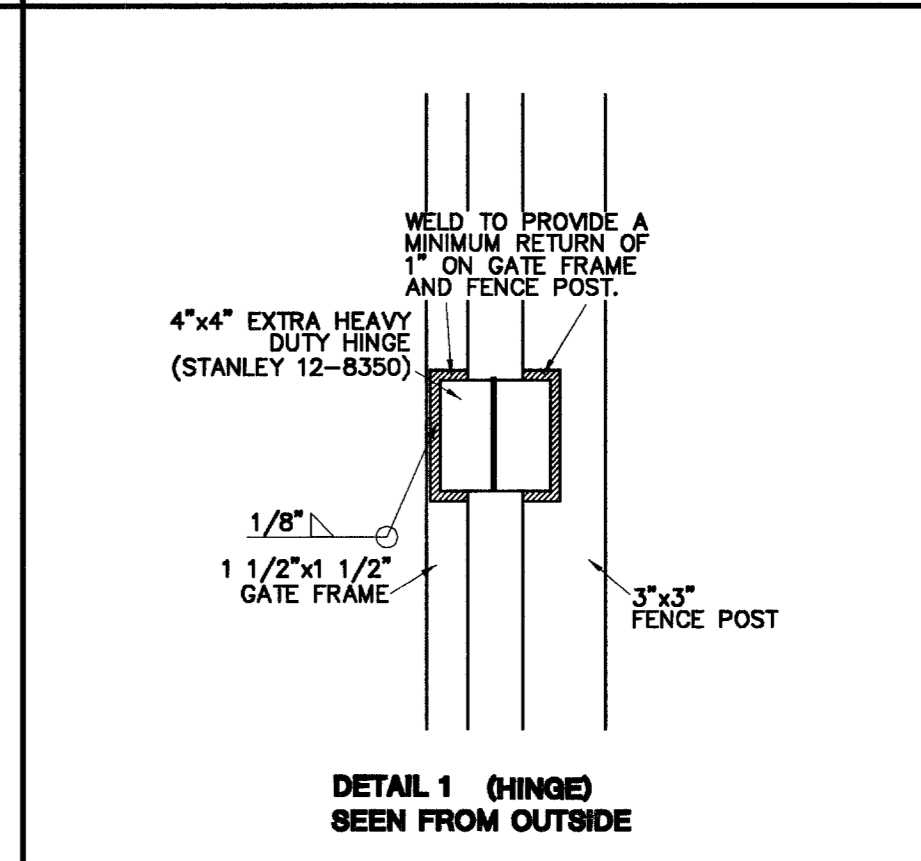
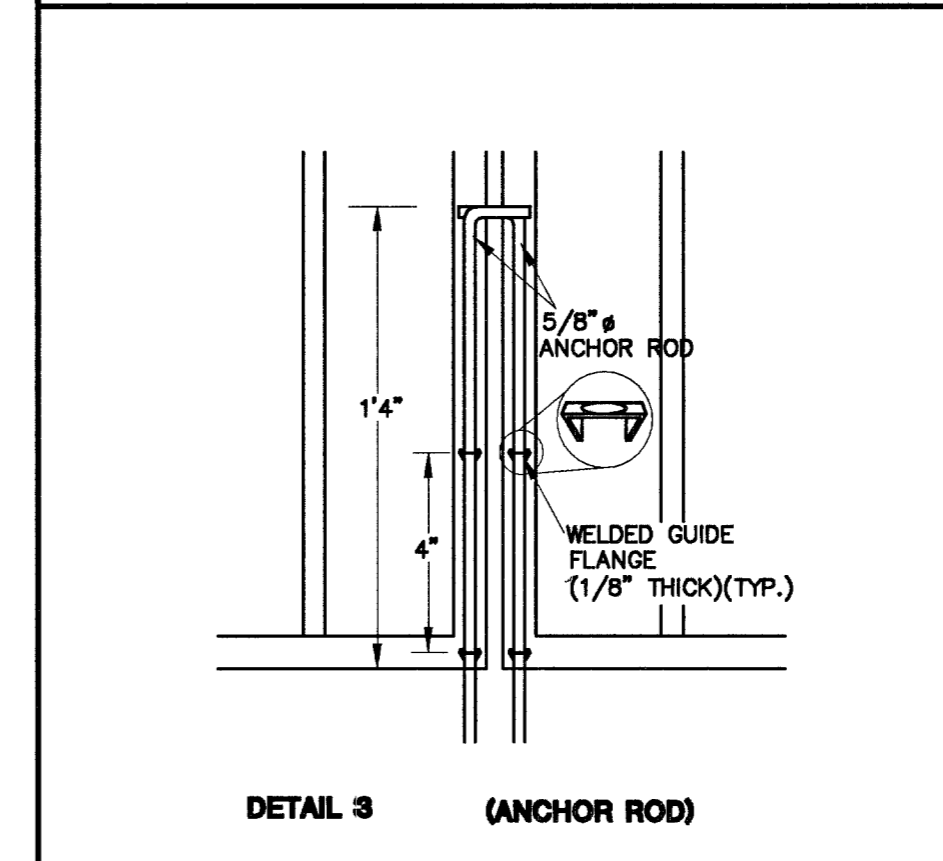
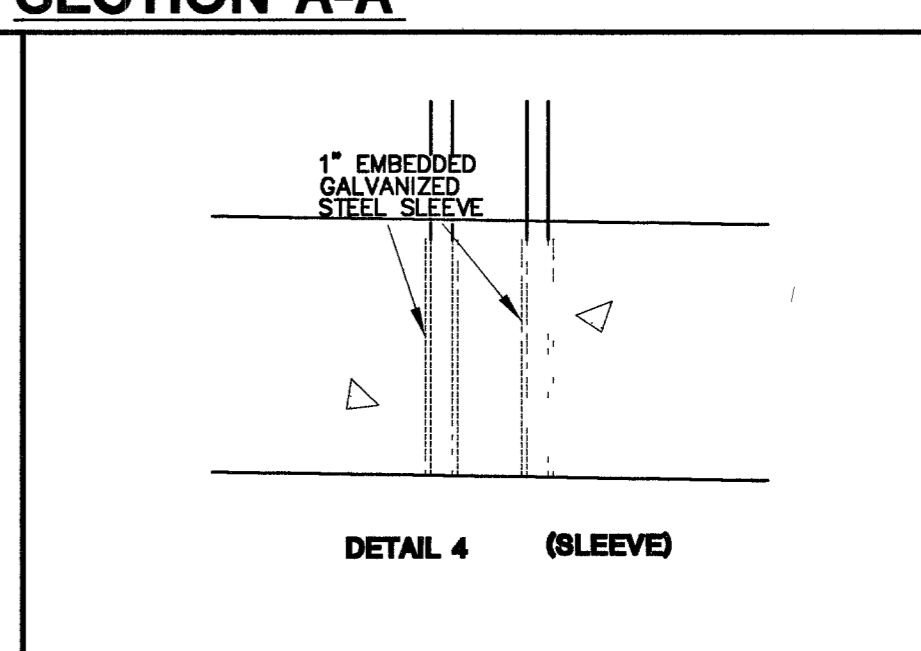
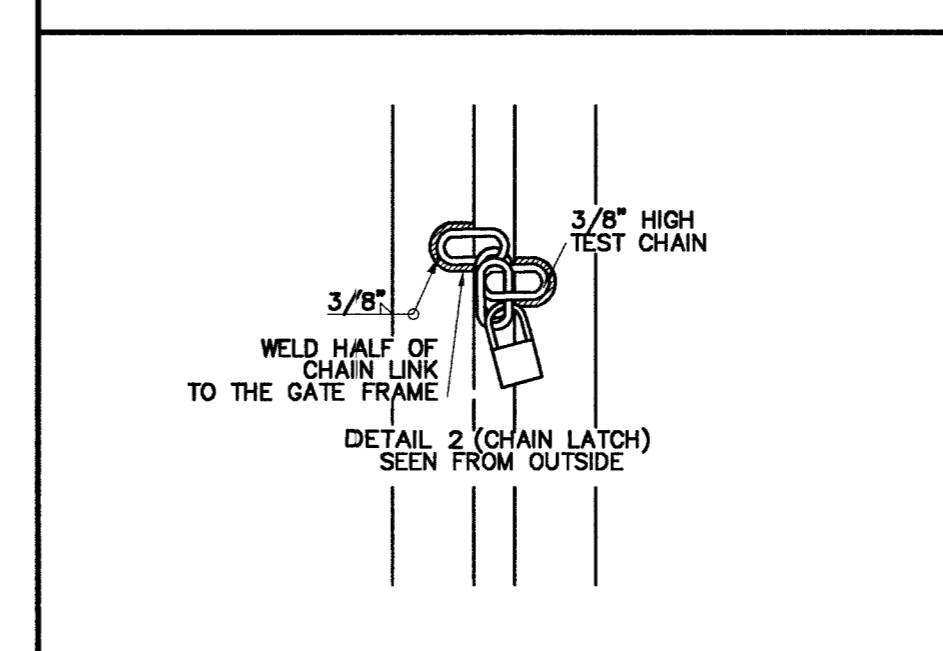
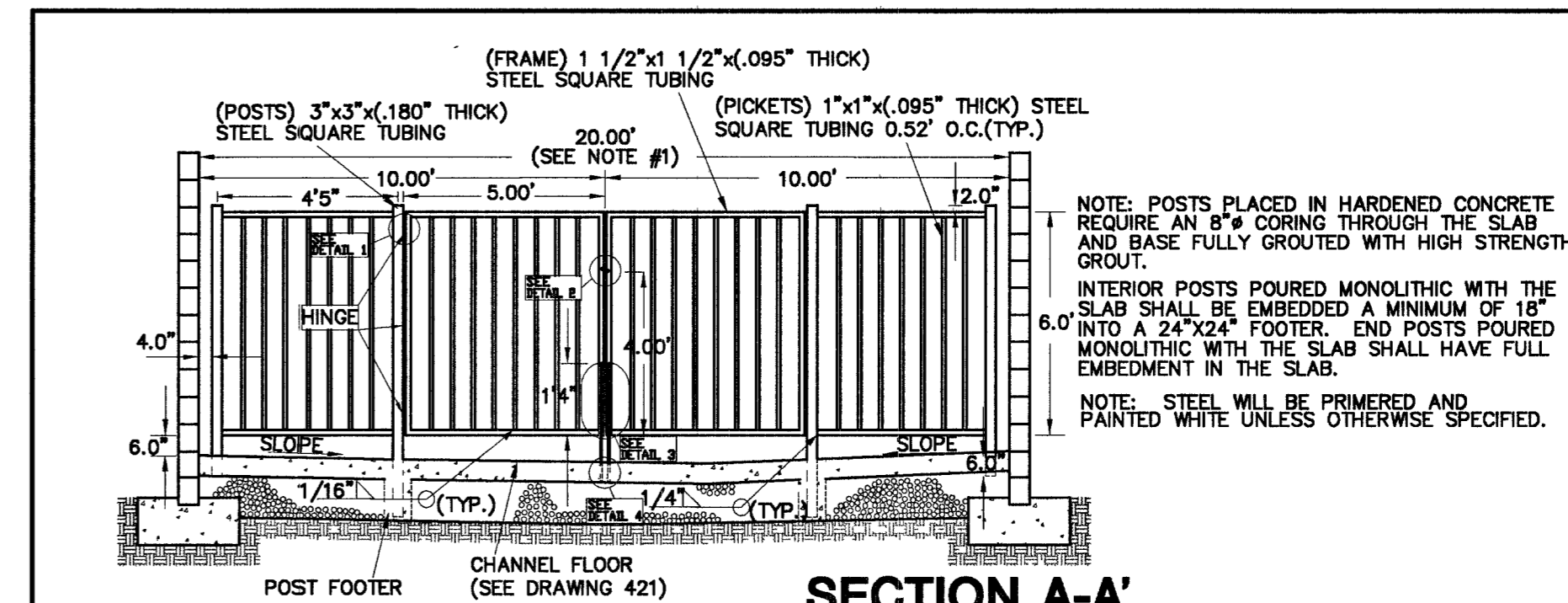


SPECIFICATION REFERENCE	UNIFORM STANDARD DRAWINGS CLARK COUNTY AREA
	CITY OF LAS VEGAS ONLY THRU-LOT DRAIN (DETAIL FOR BOLLARDS) NOT FOR USE IN EMERGENCY ACCESS
DATE 03-07-02	DWG. NO. 421 A   PAGE NO. 120 B



SPECIFICATION REFERENCE	UNIFORM STANDARD DRAWINGS CLARK COUNTY AREA
	CITY OF LAS VEGAS ONLY THRU-LOT DRAIN (DETAIL FOR SLAB ON GRADE) NOT FOR USE IN EMERGENCY ACCESS
DATE 03-07-02	DWG. NO. 421   PAGE NO. 120 A



SPECIFICATION REFERENCE	UNIFORM STANDARD DRAWINGS CLARK COUNTY AREA
	CITY OF LAS VEGAS ONLY THRU-LOT DRAIN (DETAIL FOR FENCE) NOT FOR USE IN EMERGENCY ACCESS
DATE 03-07-02	DWG. NO. 421 B   PAGE NO. 120 C

7	6	5	4	3	2	1	REV	DATE	BY

**CITY OF LAS VEGAS**

**KIMBALL HILL**  
8 SANSATE WAY, SUITE 401  
HENDERSON, NEVADA 89014  
(702)438-4582

**DRAINAGE EASEMENT SECTION & DETAIL SHEET**

**BRIGHTON & KENSINGTON PROVIDENCE / CLIFFS EDGE UNIT 2**

2727 SOUTH RAINBOW BOULEVARD LAS VEGAS, NEVADA 89146-5148  
PH: (702) 875-7550 FAX: (702) 352-2597  
nevada CONSULTING ENGINEERS & PLANNERS • LAND SURVEYORS

DRAWN BY: B/W/TP 2/25/05  
DESIGNED BY: B/W/TP 2/25/05  
CHECKED BY: CRG 2/25/05  
PROJECT NO: 6399-2  
SCALE: N/A  
HORIZ. N/A  
VERT. N/A

PROFESSIONAL ENGINEER, STATE OF NEVADA  
CHRISTOPHER A. CHURCH  
LICENSE NO. 13956  
EXPIRES 06-30-07  
11/18/05

SHEET  
**DT3**  
18 OF 52 SHEETS  
DRAWING NO.  
1074890-2

8547