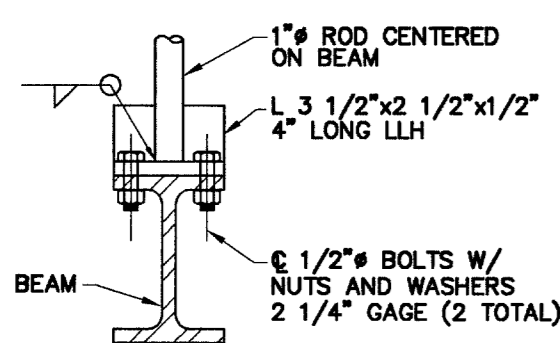


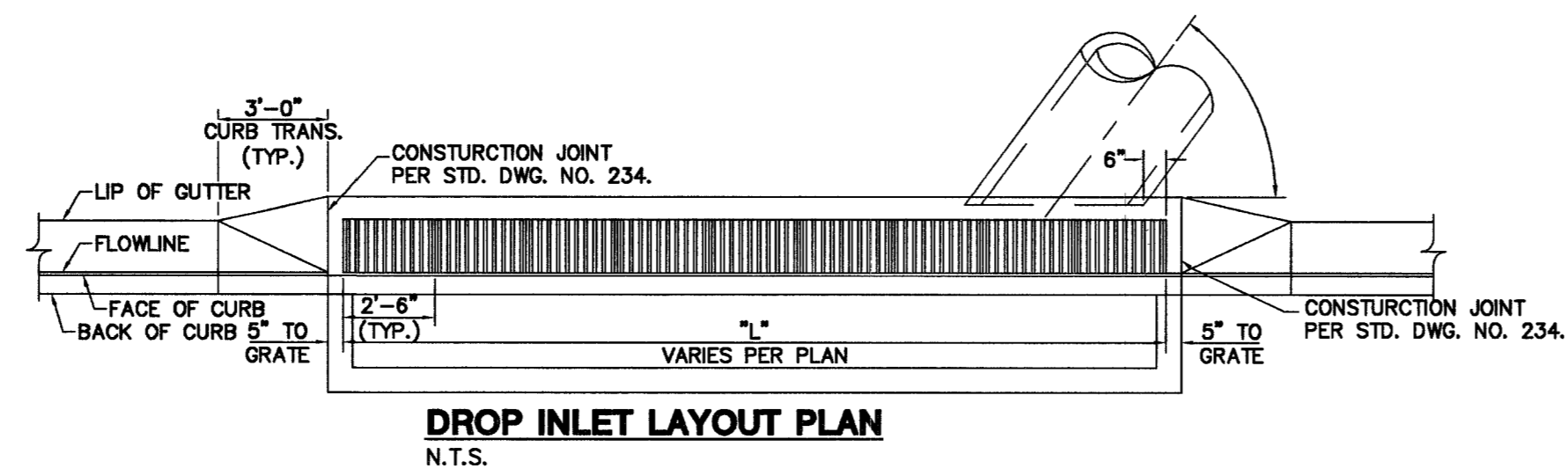
SECTION 'A'
N.T.S.



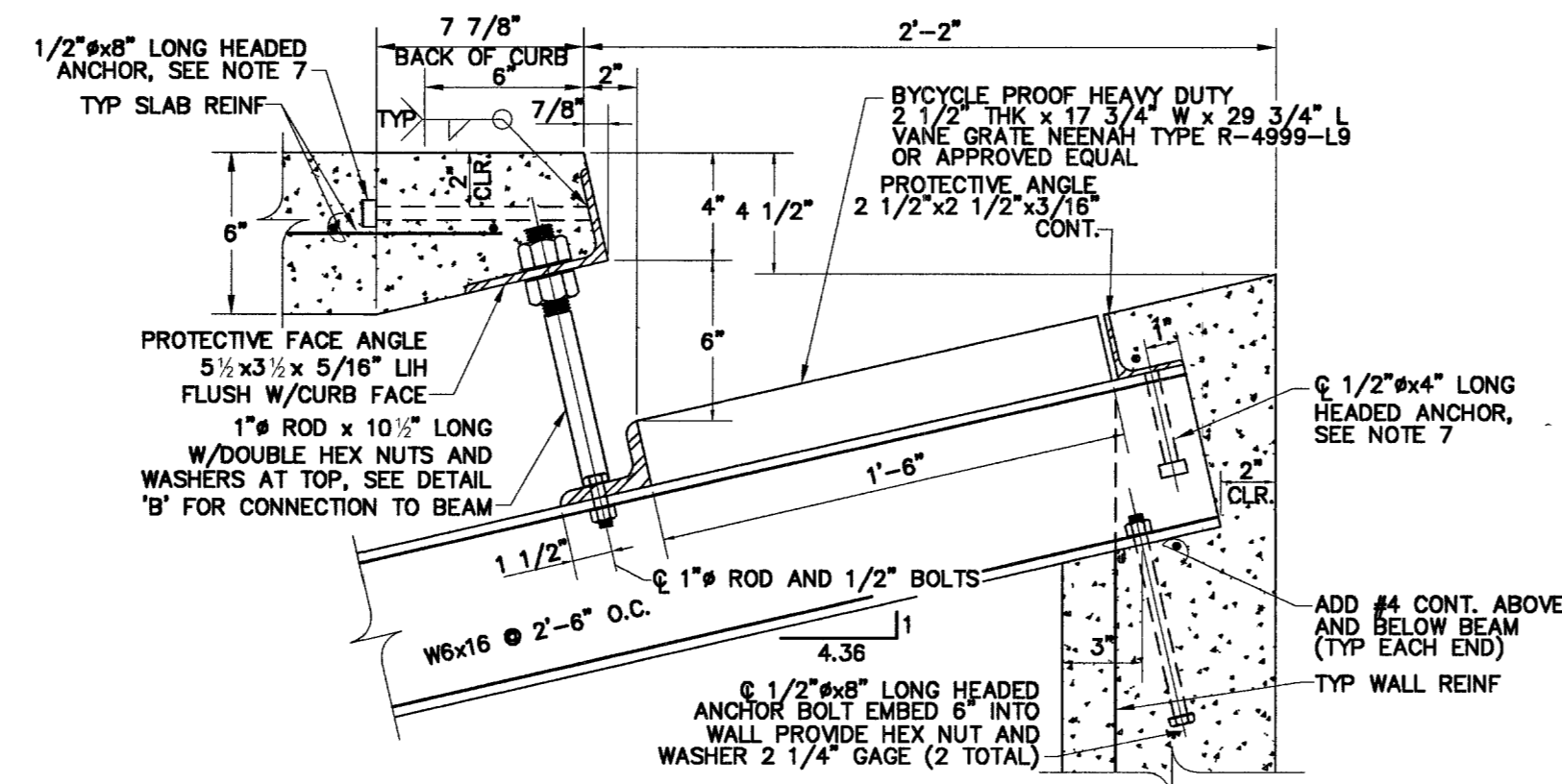
DETAIL 'B'
N.T.S.

NOTES:

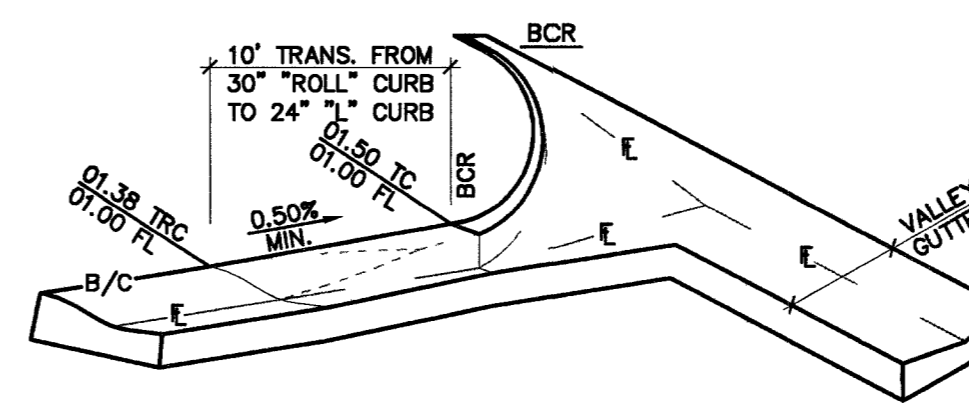
1. ALL EXPOSED METALS SHALL BE HOT DIP GALVANIZED AFTER FABRICATION.
2. PROVIDE 1/4" (MIN.) CLEARANCE ALL AROUND THE STEEL BEAM, DRY PACK AFTER INSTALLATION.
3. WHEN REQUIRED BY LENGTH OF OPENING, PLATE ANGLE MAYBE DELIVERED IN SECTIONS AND BUTT WELDED IN PLACE.
4. ALL GALVANIZING DAMAGED BY WELDING SHALL RECEIVE TWO COATS OF GALVALLOY OR EQUAL.
5. CONCRETE SHALL BE MODIFIED CLASS DA.
6. SEE GENERAL NOTES FOR STRUCTURES ON C3.
7. ANGLE ANCHORS SHALL BE EMBEDDED MIDPOINT IN EACH ENDWALL AND EVENLY SPACED. (MAXIMUM SPACING OF 2').



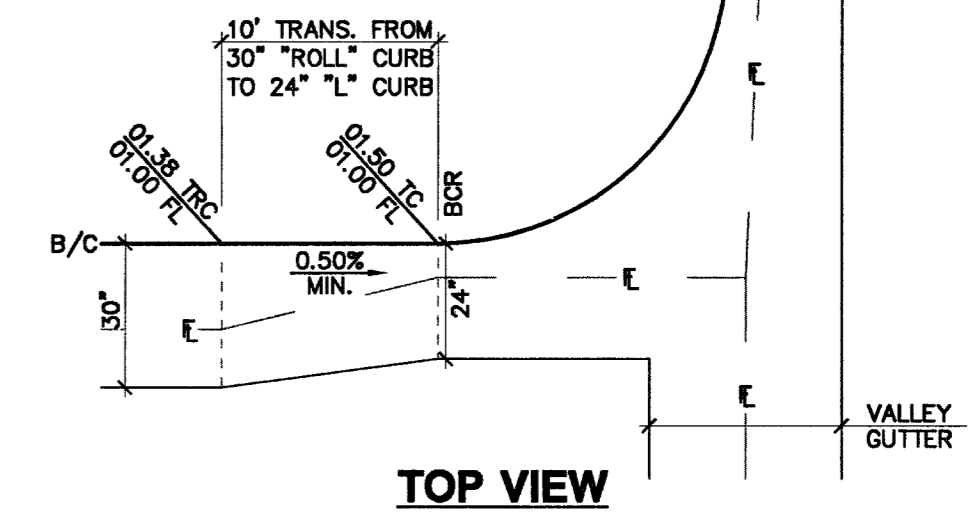
DROP INLET LAYOUT PLAN
N.T.S.



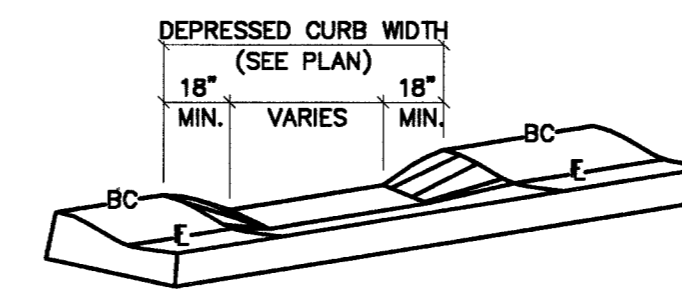
PROTECTIVE FACE & ROD - DETAIL 'A'
N.T.S.



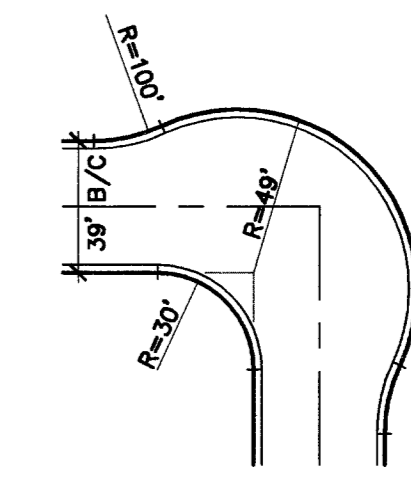
10' CURB TRANSITION DETAIL
N.T.S.



TOP VIEW



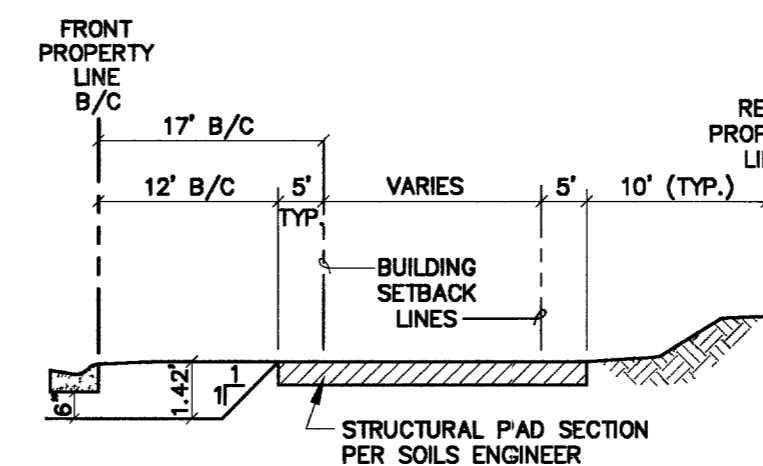
DEPRESSED CURB DETAIL
N.T.S.



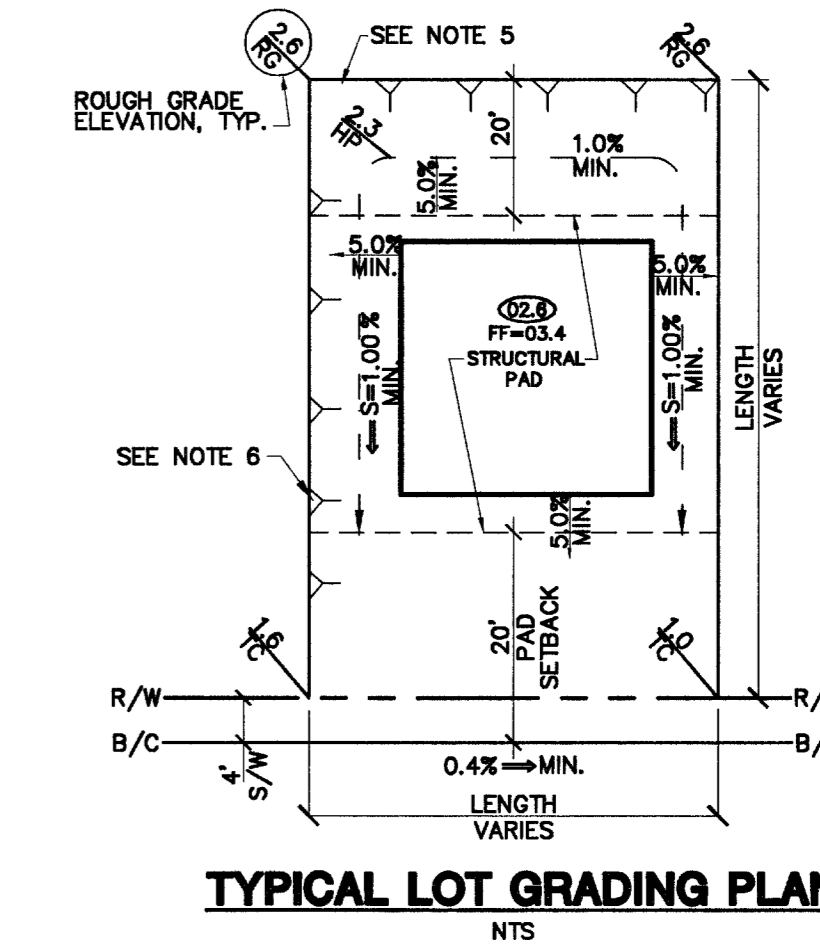
KNUCKLE (TYPICAL)

NOTES:

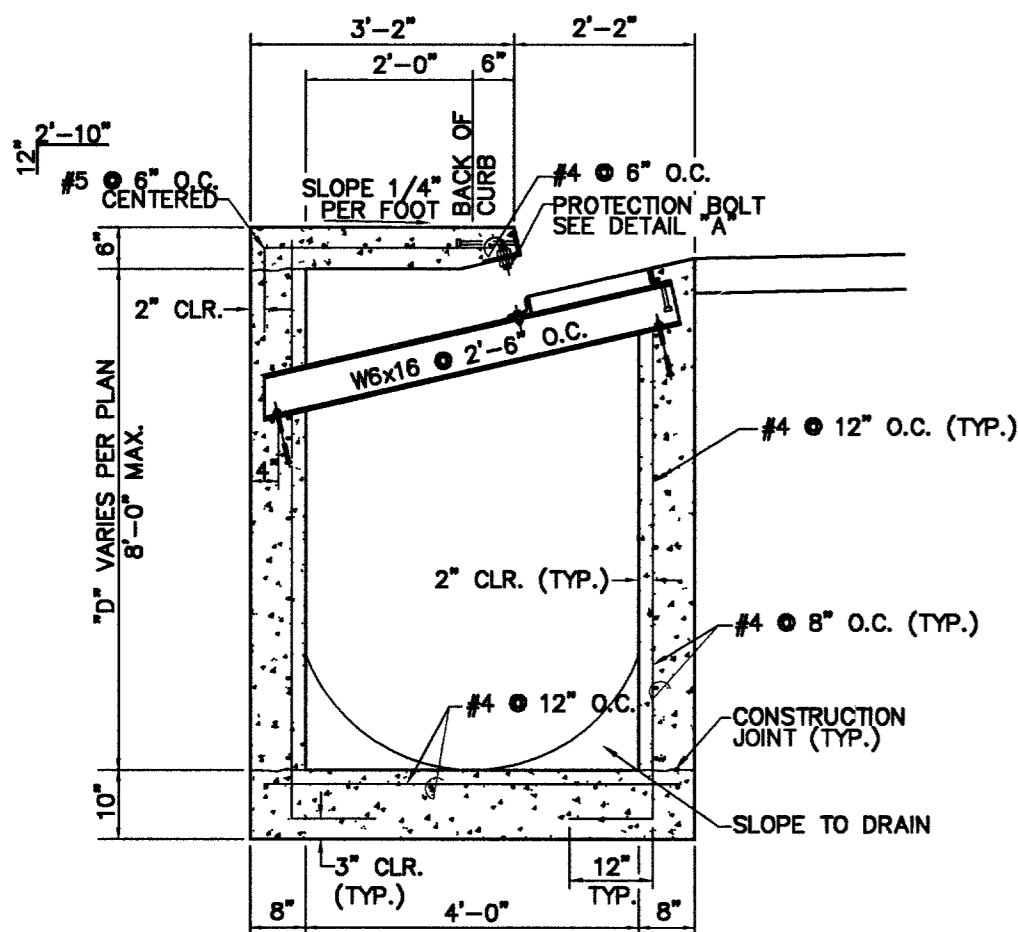
1. GRADING TO BE IN COMPLIANCE WITH CLARK COUNTY REVISED UNIFORM BUILDING CODE, LATEST EDITION.
2. STRUCTURAL PAD SHALL BE 5' BEYOND BLDG. SETBACK, SEE TYPICAL GRADING SECTION.
3. REAR LOT CORNER GRADES ARE EQUAL TO PAD GRADES UNLESS SHOWN OTHERWISE.
4. MINIMUM SIDEYARD X-SLOPE SHALL BE 5%.
5. MAXIMUM REAR YARD SLOPE IS 2:1 AS SHOWN, EXCEPT THAT WITHIN 15' OF THE HOUSE THE MAXIMUM SLOPE IS 12:1.
6. MAXIMUM SIDEYARD SLOPE IS 5:1 AS SHOWN EXCEPT THAT WITHIN 5' OF THE HOUSE, THE MAXIMUM SLOPE IS 12:1.
7. ELEVATIONS SHOWN HERE ON WITHIN LANDSCAPED AREAS ARE .30 FEET BELOW FINISH GRADES TO ALLOW FOR THE ADDITION OF LANDSCAPING MATERIALS ATOP THESE ROUGH GRADES.



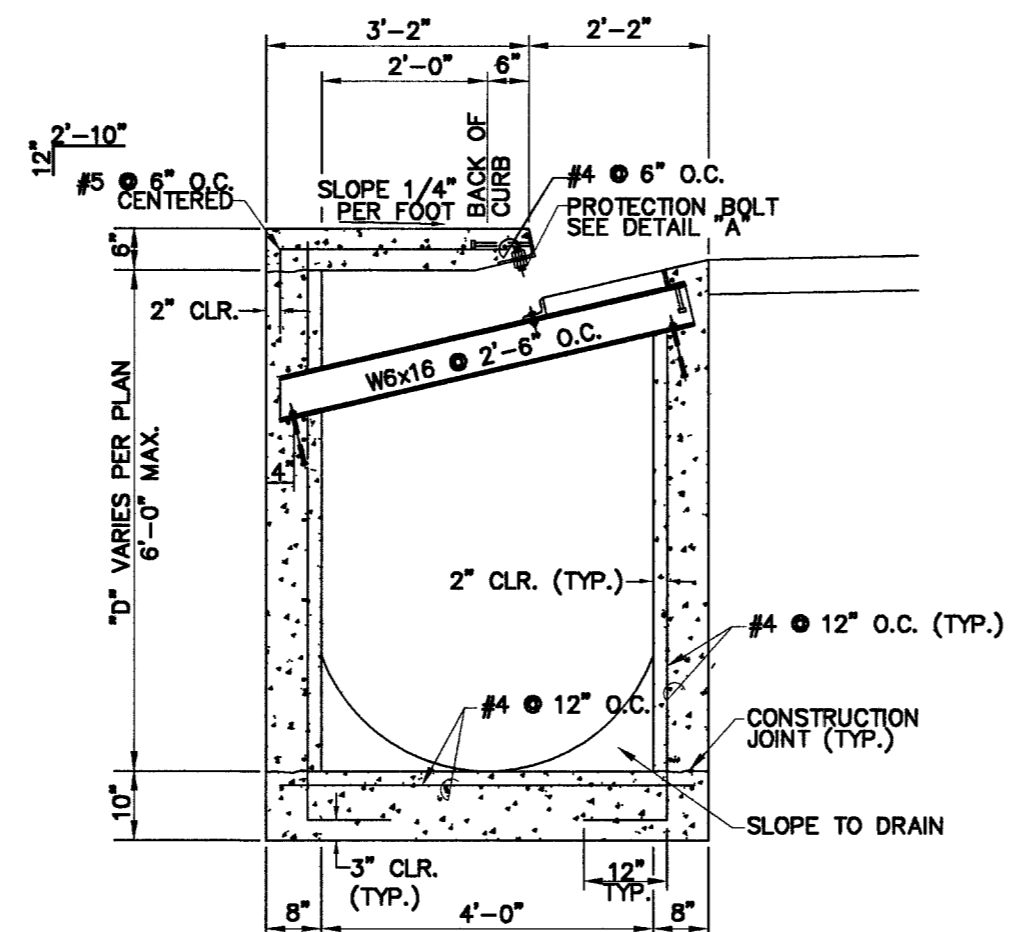
TYPICAL GRADING SECTION
STANDARD SINGLE FAMILY DETACHED - NTS



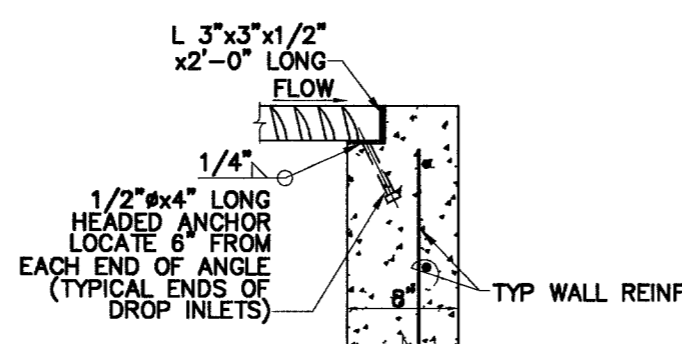
TYPICAL LOT GRADING PLAN
NTS



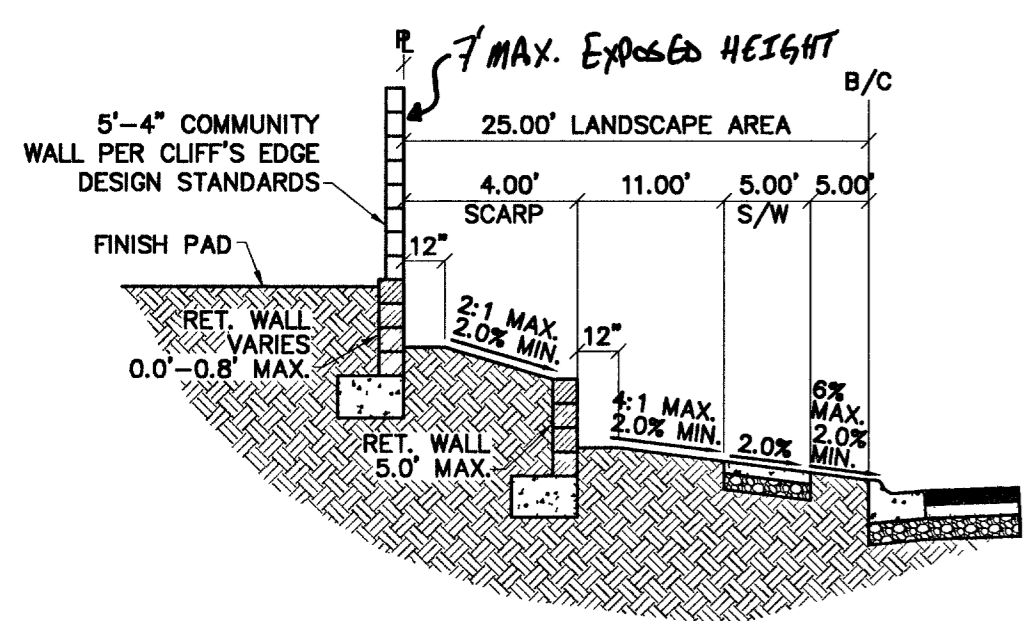
TYPE 'CM' DROP INLET SECTION (6' TO 8' DEEP)
N.T.S.



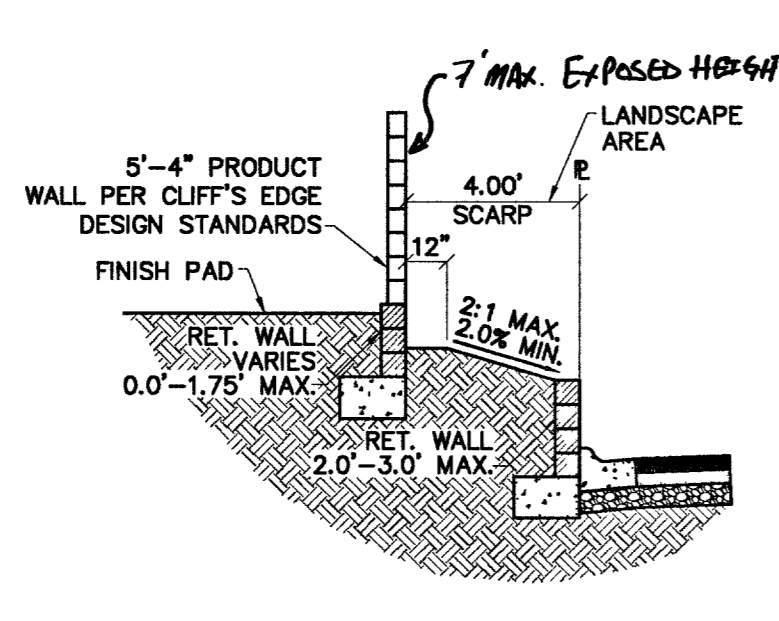
TYPE 'CM2' DROP INLET SECTION (6' DEEP)
N.T.S.



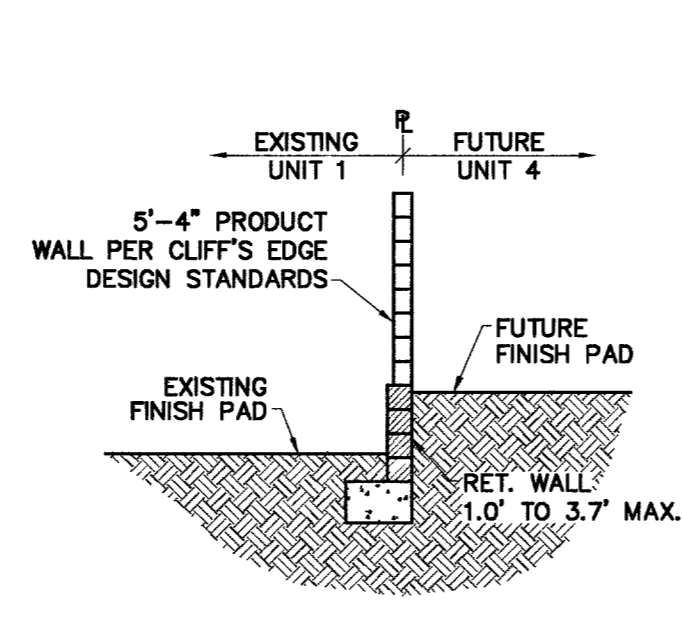
SECTION 'B'
N.T.S.



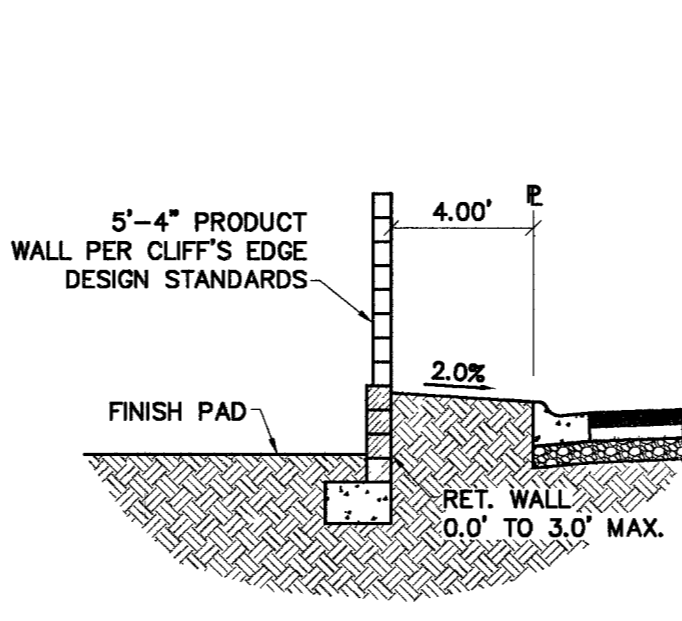
AA EXTERIOR WALL SECTION
N.T.S.



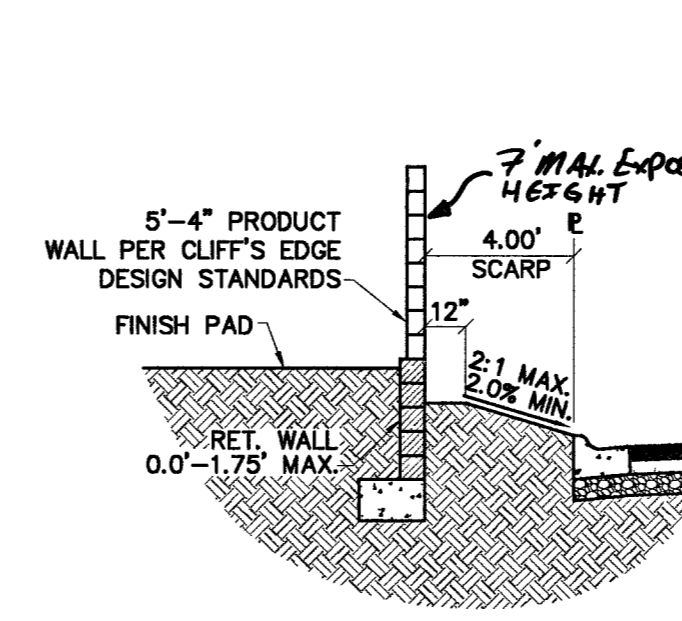
BB INTERIOR WALL SECTION
N.T.S.



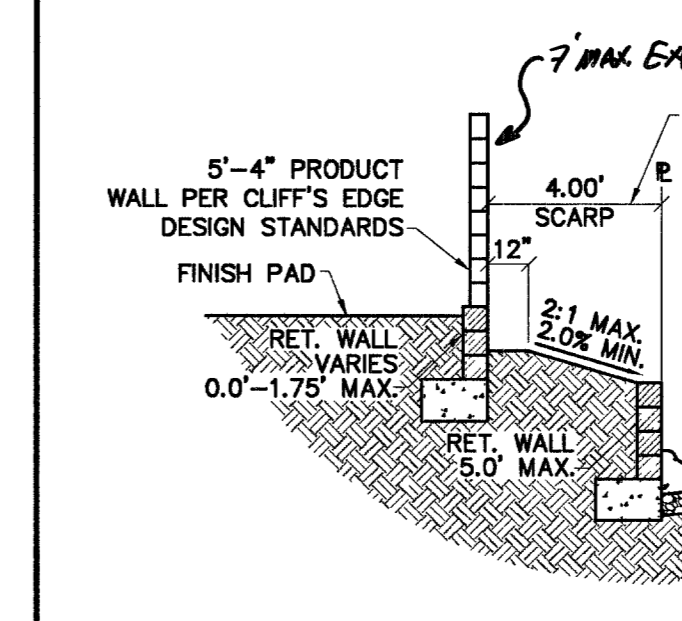
CC INTERIOR WALL SECTION
N.T.S.



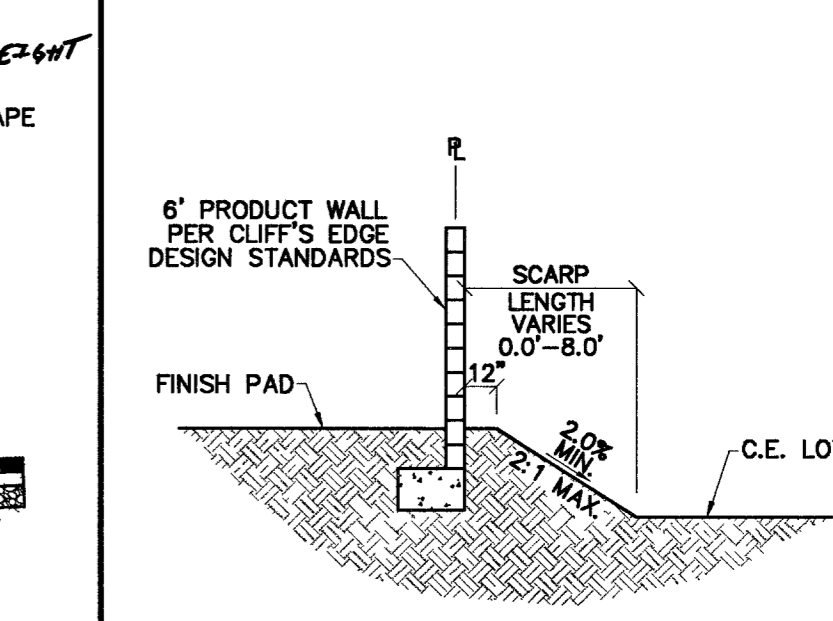
DD INTERIOR WALL SECTION
N.T.S.



EE INTERIOR WALL SECTION
N.T.S.



FF INTERIOR WALL SECTION
N.T.S.



GG INTERIOR WALL SECTION
N.T.S.

KIMBALL HILL
8 SUNSET WAY, SUITE 101
HENDERSON, NEVADA 89014
(702) 438-6622

CITY OF LAS VEGAS
2727 SOUTH RAINBOW BOULEVARD LAS VEGAS, NEVADA 89146-5148
PH. (702) 873-7500 FAX (702) 362-2597

nevada
CONSULTING ENGINEERS • PLANNERS • LAND SURVEYORS

SECTION & DETAIL SHEET 2

BRIGHTON & KENSINGTON
PROVIDENCE / CLIFFS EDGE
UNIT 2

DRAWN BY: 2/25/05
DESIGNED BY: 2/25/05
CHECKED BY: 2/25/05
PROJECT NO: 6399-2
SCALE: N/A
DATE: 11/18/05

REGISTERED PROFESSIONAL ENGINEER
CHRISTOPHER BRUBAKER
LICENSE NO. 13956
EXPIRES 06-30-07

SHEET
DT2
17 OF 52 SHEETS
DRAWING NO.
10714870-2