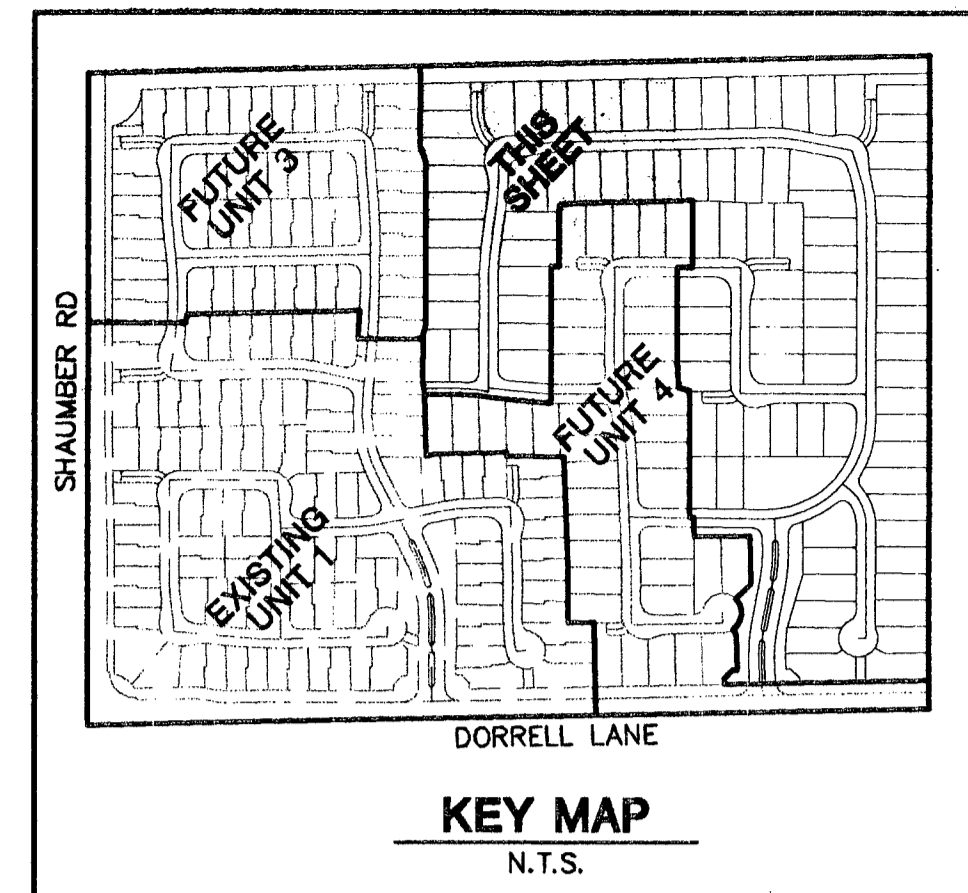


N.A.P. APN 126-13-401-014
(BLM/LVVWD RESERVOIR SITE)

N.A.P. APN 126-13-401-014
(BLM/LVVWD RESERVOIR SITE)

N.A.P.
(BLM/L)



KEY MAP
N.T.S.

GRAPHIC SCALE
1" = 30'

PROJECT BENCHMARK
 DATUM: NORTH AMERICAN VERTICAL DATUM OF 1988 (NAV88)
 CITY OF LAS VEGAS BENCHMARK: BLV98-13SES
 NAV88 ELEVATION: 2853.03 METERS (2853.03 FEET)
 RIVET AND PLATE IN CONCRETE CYLINDER NW CORNER OF HUALAPAI AND ELKHORN
 NOTE: WHEN THE SURVEYING FOR THIS PROJECT BEGAN, THE ABOVE REFERENCED BENCHMARK BLV98-13SES WAS NOT PUBLISHED. THE BASIS FOR THE DATUM FOR THIS PROJECT IS SHOWN ON RECORD OF SURVEY FILE 124 PAGE 94, CLARK COUNTY BENCHMARK 1000-6N6, WHICH AT THE TIME OF THE ORIGINAL SURVEY (PRIOR TO THE CURRENT 2003 COUNTY BENCHMARK PUBLISHING) HAD AN ELEVATION OF 2854.81 FEET. TO CONVERT THE CURRENT CITY OF LAS VEGAS BENCHMARK BLV98-13SES TO MATCH THE ORIGINAL PROJECT DATUM, 0.34' NEEDS TO BE ADDED TO THE ELEVATION OF 2853.03 FEET.

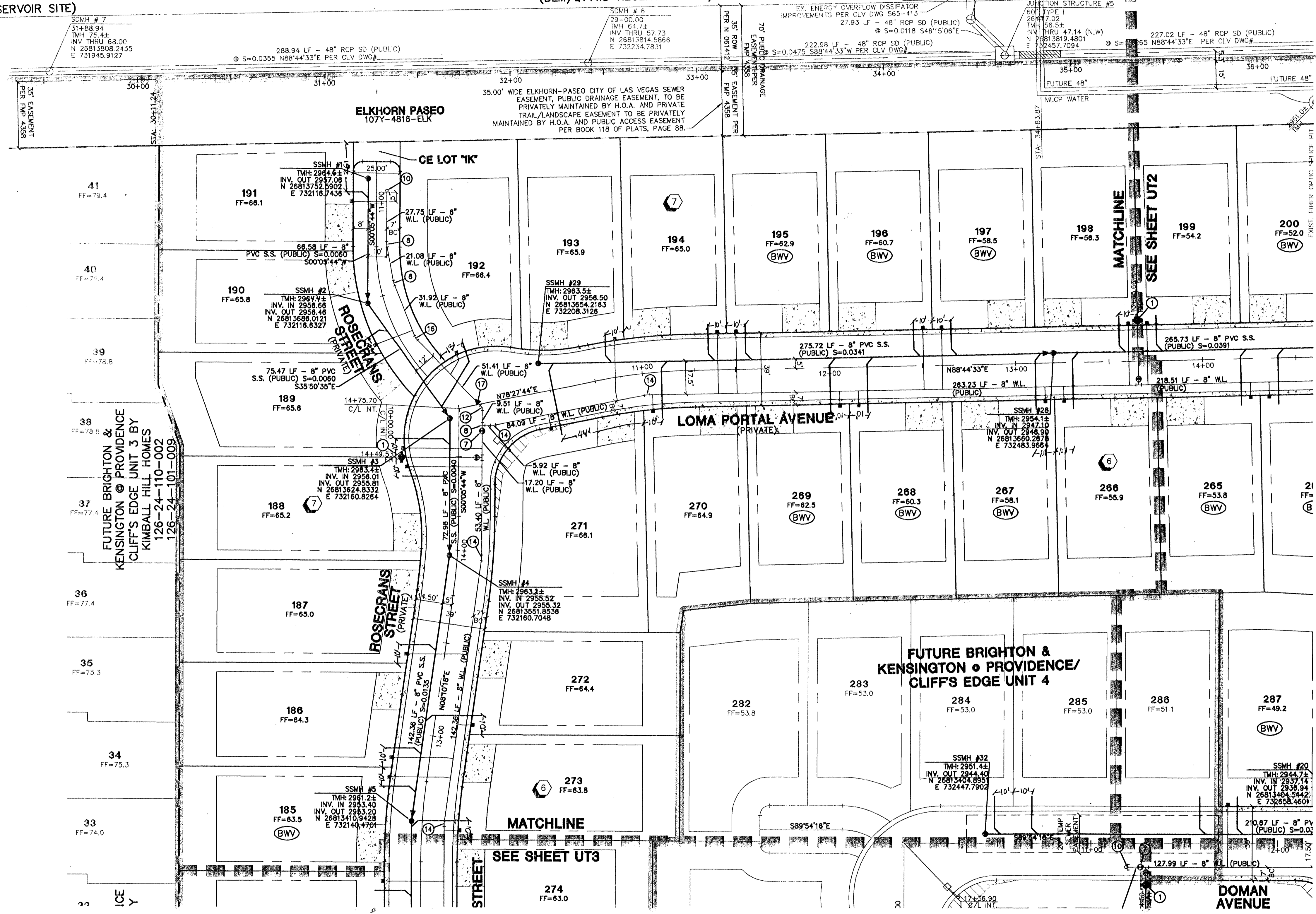
BASIS OF BEARINGS
 THE BASIS OF BEARINGS FOR THIS PROJECT IS NORTH 00°08'18" EAST BEING THE EAST LINE OF THE NORTHWEST QUARTER (NE 1/4) OF THE SECTION 24, TOWNSHIP 19 SOUTH, RANGE 59 EAST, W.D.M., CLARK COUNTY, NEVADA, AS SHOWN ON A RECORD OF SURVEY ON FILE IN THE CLARK COUNTY, NEVADA, RECORDER'S OFFICE IN FILE 123 AT PAGE 32.

CONTRACTOR NOTE
 CONTRACTOR SHALL VERIFY HORIZONTAL AND VERTICAL LOCATION OF EXISTING UTILITIES AND NOTIFY THE DESIGN ENGINEER IMMEDIATELY OF ANY DISCREPANCIES PRIOR TO CONSTRUCTION.

PRIVATE STREET NOTE:
 PRIVATE STREETS AND PRIVATE DRIVES ARE P.U.E.S. C.L.V., PUBLIC SEWER EASEMENTS, AND PUBLIC DRAINAGE EASEMENTS TO BE PRIVATELY MAINTAINED.

NOTES
 1. SEE SHEET UT6 FOR S.S. MANHOLE SCHEDULE, LEGENDS, DETAILS, NOTES, AND QUANTITY ESTIMATE.

- CONSTRUCTION NOTES**
- ① FIRE HYDRANT ASSEMBLY (INCLUDES 8"x6" TEE & 6"GV) PER UDACS PLT. 7
 - ② 6" GATE VALVE PER UDACS PLT. 3 & 8
 - ③ 6" TEE UDACS PLT. 5
 - ④ 8"x6" TEE PER UDACS PLT. 5
 - ⑤ 8"x 8" CROSS UDACS PLT. 5
 - ⑥ 8"-11 1/4" BEND UDACS PLT. 5
 - ⑦ 8" GATE VALVE PER UDACS PLTS. 3 & 8
 - ⑧ 8" TEE PER UDACS PLT. 5
 - ⑨ 8" 45° BEND UDACS PLT. 5
 - ⑩ CAP W/ 2" B.O PER UDACS PLT. 4A
 - ⑪ 8" 90° BEND PER UDACS PLT. 5
 - ⑫ 8" 45° BEND PER UDACS PLT. 5
 - ⑬ 8"-22 1/2" BEND PER UDACS PLT. 5
 - ⑭ 8"-11 1/4" BEND PER UDACS PLT. 5
 - ⑮ 8" 5' BEND RESTRAINING BOTH ENDS
 - ⑯ 8"-22 1/2" BEND PER UDACS PLT. 5
 - ⑰ 8"x8" REDUCER PER UDACS PLT. 3
 - ⑱ 1" IRRIGATION METER PER UDACS PLATE 1-D W/1" RPPA PER UDACS PLATE 11-A



KIMBALL HILL
 8 SUNSET WAY, SUITE 101
 Henderson, Nevada 89014
 (702) 436-4382

**BRIGHTON & KENSINGTON
 PROVIDENCE / CLIFFS EDGE
 UTILITY PLAN 1
 UNIT 2**

DRAWN BY: B/W/7/05
 DESIGNED BY: B/W/7/05
 CHECKED BY: C/C/7/05
 PROJECT NO: 5399-2
 SHEET: UT1
 4 OF 62 SHEETS
 DRAWING NO. 10714890-2

APPROVAL:
 CITY FIRE MARSHAL
 DATE: 11/7/05
 DATE: 9/15/06
 PROJ: 111528

Call before you Underground
 1-702-455-7511
 CLARK COUNTY TRAFFIC OPERATIONS AND CONDUITS
 1-702-229-6611
 LAS VEGAS AREA COMPUTERIZED TRAFFIC SYSTEM

Call before you Overhead
 1-702-227-2929

Call before you Dig
 1-800-227-2600

11/16/07
 85633.11