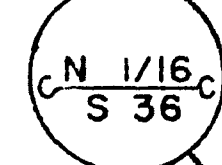
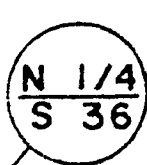


CEDAR PARK II (A CONDOMINIUM)

BEING A PORTION NE 1/4 OF THE NW 1/4 OF SECTION 36, T20S, R61E, M.D.M.
CITY OF LAS VEGAS CLARK COUNTY, NEVADA

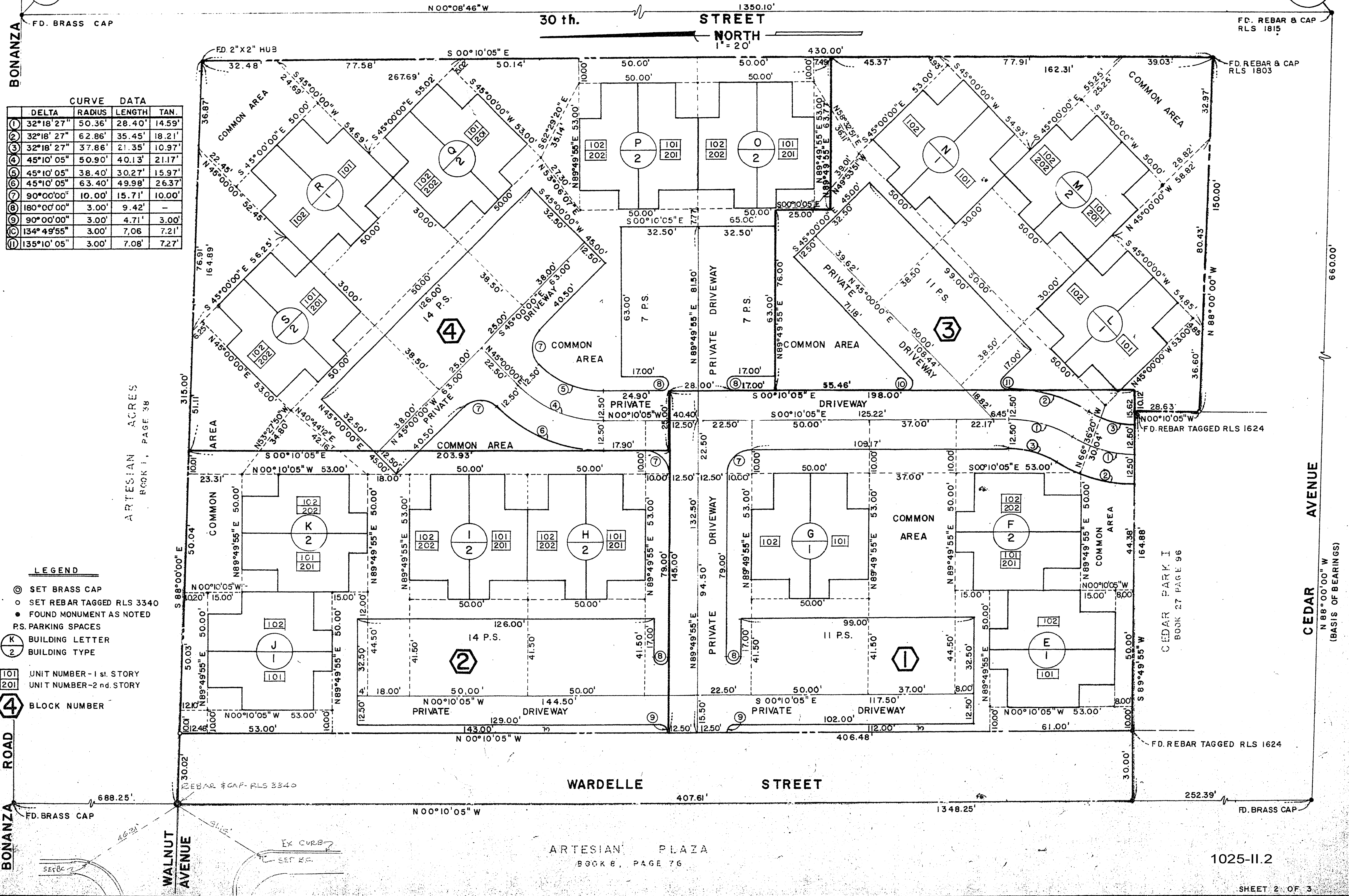
BONANZA ROAD



CURVE DATA

DELTA	RADIUS	LENGTH	TAN.
32°18'27"	50.36'	28.40'	14.59'
32°18'27"	62.86'	35.45'	18.21'
32°18'27"	37.86'	21.35'	10.97'
45°10'05"	50.90'	40.13'	21.17'
45°10'05"	38.40'	30.27'	15.97'
45°10'05"	63.40'	49.98'	26.37'
90°00'00"	10.00'	15.71'	10.00'
180°00'00"	3.00'	9.42'	-
90°00'00"	3.00'	4.71'	3.00'
134°49'55"	3.00'	7.06'	7.21'
135°10'05"	3.00'	7.08'	7.27'

- LEGEND**
- ⊙ SET BRASS CAP
 - SET REBAR TAGGED RLS 3340
 - FOUND MONUMENT AS NOTED
 - RS. PARKING SPACES
 - Ⓚ BUILDING LETTER
 - ② BUILDING TYPE
 - 101 UNIT NUMBER - 1st. STORY
 - 201 UNIT NUMBER - 2nd. STORY
 - ④ BLOCK NUMBER



ARTESIAN PLAZA
BOOK 8, PAGE 76

1025-II.2

SHEET 2 OF 3

600X1563

1/23.2/79

CEDAR PARK II

(A BONDINGEM)

WITH A PART OF AN IN THE AREA OF PART OF DETROIT, ERIC, MALL,
CITY OF LAS VEGAS

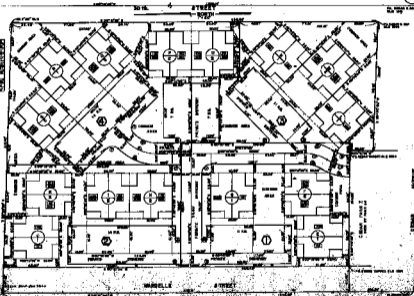
BLACK COUNTY, MISSISSIPPI

RESERVATION

1	2	3	4	5	6	7	8	9	10	11	12	13	14	15	16	17	18	19	20	21	22	23	24	25	26	27	28	29	30	31	32	33	34	35	36	37	38	39	40	41	42	43	44	45	46	47	48	49	50	51	52	53	54	55	56	57	58	59	60	61	62	63	64	65	66	67	68	69	70	71	72	73	74	75	76	77	78	79	80	81	82	83	84	85	86	87	88	89	90	91	92	93	94	95	96	97	98	99	100
---	---	---	---	---	---	---	---	---	----	----	----	----	----	----	----	----	----	----	----	----	----	----	----	----	----	----	----	----	----	----	----	----	----	----	----	----	----	----	----	----	----	----	----	----	----	----	----	----	----	----	----	----	----	----	----	----	----	----	----	----	----	----	----	----	----	----	----	----	----	----	----	----	----	----	----	----	----	----	----	----	----	----	----	----	----	----	----	----	----	----	----	----	----	----	----	----	----	----	-----

ATTENTION AGENTS

- LEGEND
- CITY OF LAS VEGAS
 - CITY OF DETROIT
 - CITY OF ERIC
 - CITY OF MALL
 - CITY OF LAS VEGAS
 - CITY OF DETROIT
 - CITY OF ERIC
 - CITY OF MALL
 - CITY OF LAS VEGAS
 - CITY OF DETROIT
 - CITY OF ERIC
 - CITY OF MALL



DETROIT, ERIC, MALL
CITY OF LAS VEGAS

1/23.2/79