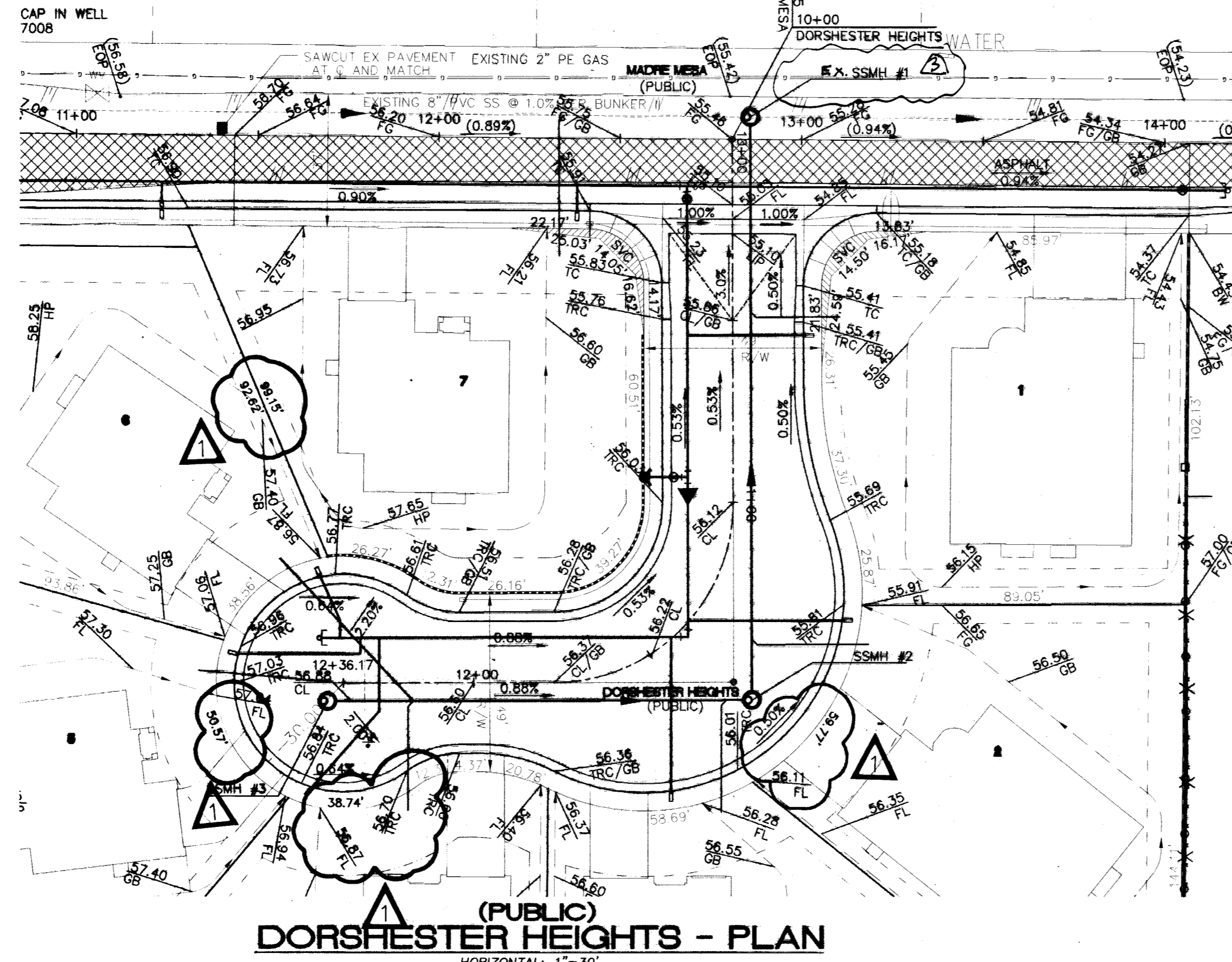


APN 310-045  
 EN ET AL  
 56.8  
 75.5  
 CAP IN WELL  
 7008

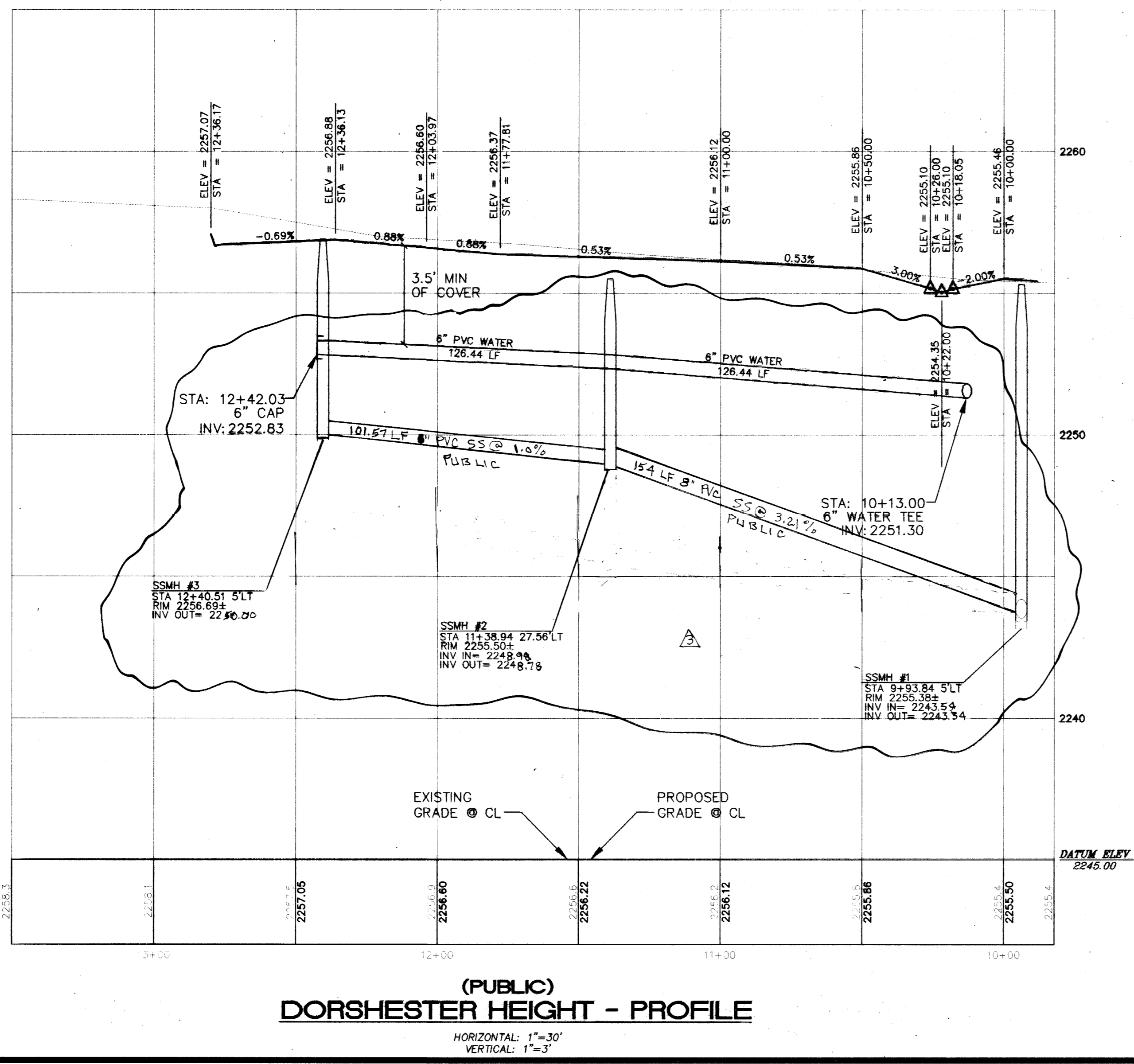
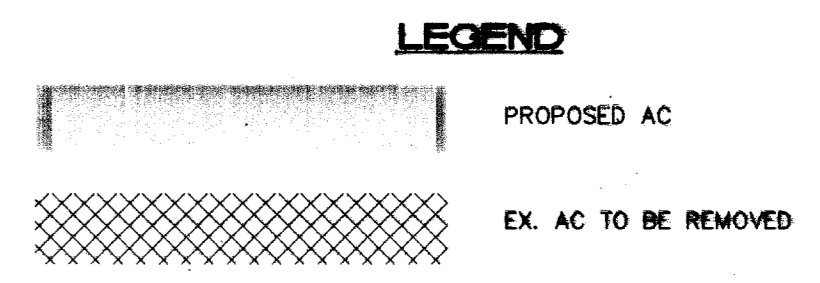
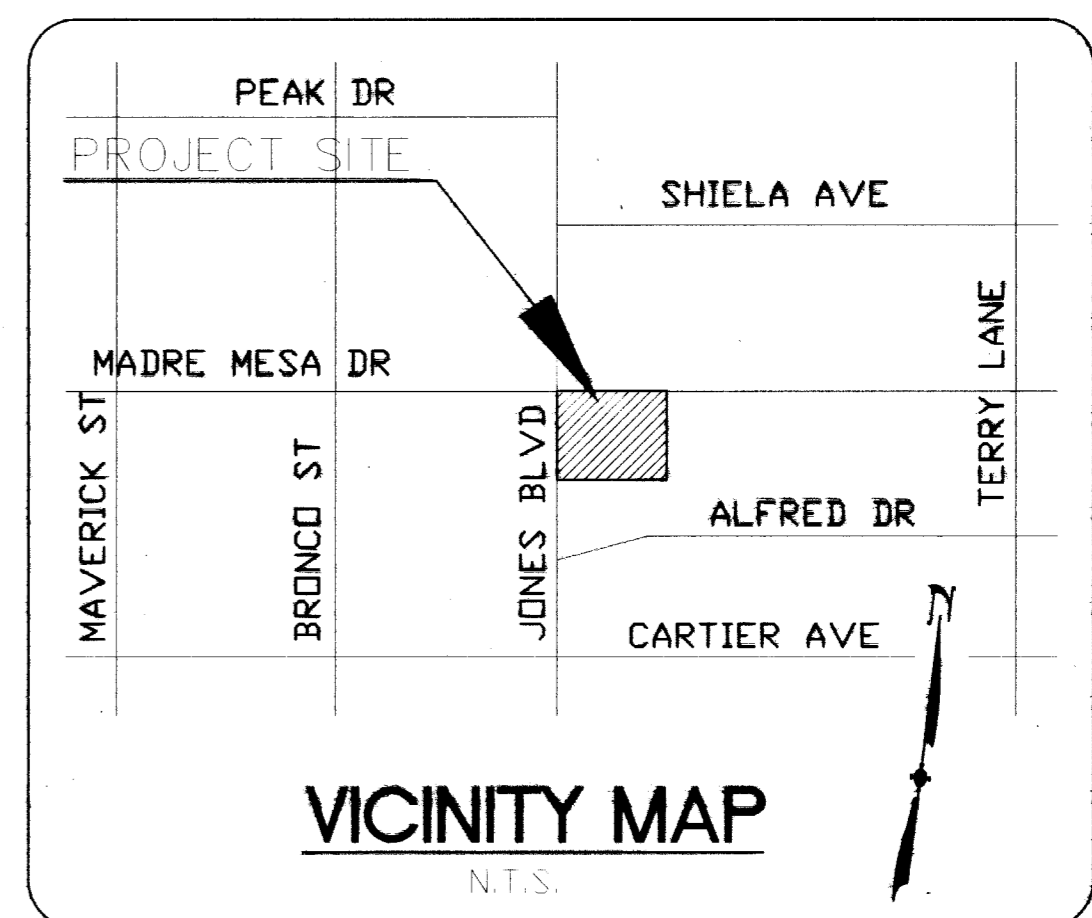
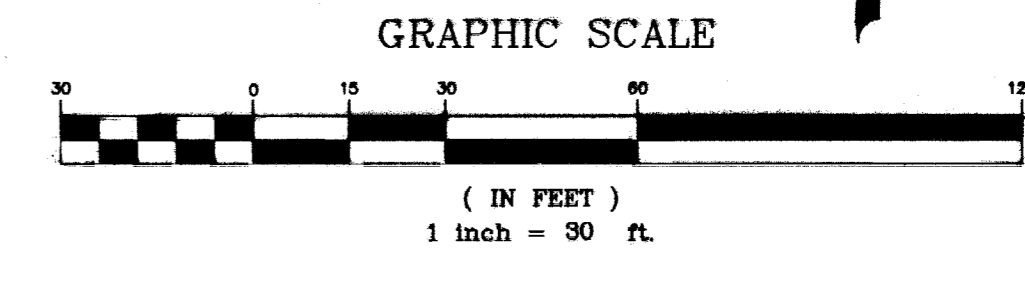
APN 138-13-310-046  
 J HUNT  
 P AD=56.0  
 FF=56.7

APN 138-13-310-047  
 C. BROWN  
 P AD=55.9  
 FF=56.3

APN 138-13-310-048  
 T & S DRAPER  
 P AD=54.8  
 FF=55.9



REF. SHEET 5 OF 8



**DISCLAIMER NOTE**

Avoid cutting underground utility lines. It's costly. Call before you Dig 1-800-227-2800 UNDERGROUND SERVICE (USA)

Avoid overhead power line contact. Call before you Overhead 1-702-227-2929 NEVADA POWER ENVIRONMENT AND SAFETY SERVICE DEPARTMENT

Avoid HITTING UNDERGROUND TRAFFIC SIGNAL SYSTEMS AND STREET LIGHT SYSTEM CONDUITS. Call before you UnderGround 1-702-455-7511 CLARK COUNTY PUBLIC WORKS AND 1-702-229-6611 LAS VEGAS AND SOUTHWEST TRAFFIC SYSTEM

UTILITY LOCATIONS SHOWN HEREON ARE APPROXIMATE ONLY. IT SHALL BE THE CONTRACTOR'S RESPONSIBILITY TO DETERMINE THE EXACT HORIZONTAL AND VERTICAL LOCATION OF ALL EXISTING UNDERGROUND OR OVERHEAD UTILITIES PRIOR TO COMMENCING CONSTRUCTION. NO REPRESENTATION IS MADE THAT ALL EXISTING UTILITIES ARE SHOWN HEREON. THE ENGINEER ASSUMES NO RESPONSIBILITY FOR UTILITIES NOT SHOWN OR UTILITIES NOT SHOWN IN THEIR PROPER LOCATION.

**BASIS OF BEARING**

NORTH 04°13'42" WEST, BEING THE CENTERLINE OF MUSTANG ROAD, THE WEST LINE OF THE NW 1/4 OF THE NE 1/4 OF THE SW 1/4 OF THE NE 1/4 OF SECTION 14, TOWNSHIP 20 SOUTH, RANGE 60 EAST, M.D.M., AS SHOWN ON PARCEL MAP FILE 13, PAGE 23, CLARK COUNTY, NEVADA.

**BENCHMARK**

PROJECT DATUM: NORTH AMERICAN VERTICAL DATUM OF 1988 (NAVD88)  
 CITY OF LAS VEGAS BENCHMARK: #725, 6LV00 1456E  
 ELEVATION: 694.8878 METERS (2279.81 FEET)  
 RIVET & PLATE IN TOP OF CURB ON THE WEST SIDE OF MAVERICK STREET @ CARTIER

**APPROVED FOR CONSTRUCTION**

*Robert Gelu*  
 Las Vegas Valley Water District  
 Date: 10/31/06

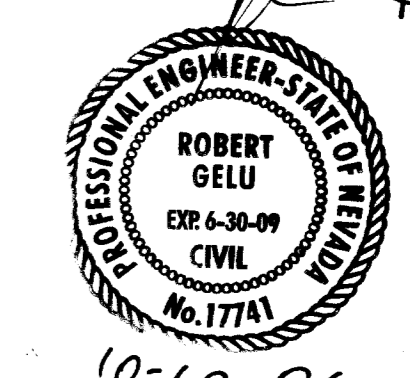
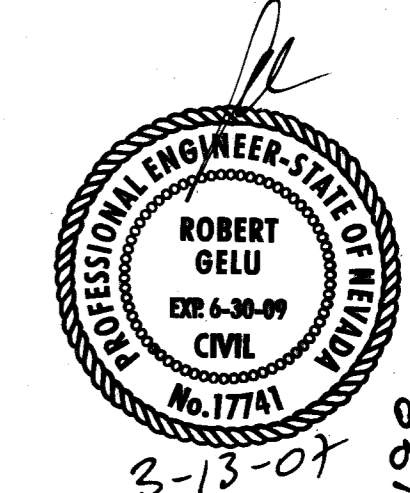
FOR THAT PORTION IN CLARK COUNTY ONLY

CLARK COUNTY DEPARTMENT OF DEVELOPMENT SERVICES

Acceptance of plans for filing

BY: *Robert Gelu*

NOTE: Power poles and / or other existing facilities not in proper location based on proposed improvements shown hereon will be re-located at no expense to Clark County.



CIVIL IMPROVEMENT PLANS FOR  
 BUNKER COMMONS IV  
 DORSHESTER HEIGHTS PLAN AND PROFILE  
 LAS VEGAS CLARK COUNTY NEVADA

REV.	DATE	DESCRIPTION	BY	APP'D
1	8/27/07	Revised L&P	Robert Gelu	R.G.
2	1-21-08	Revised L&P	Robert Gelu	R.G.

SCALE: HORIZ: N/A VERT: N/A  
 SHEET: 6 OF 8  
 JOB NO: 73003  
 FILED: C:\Users\rgel\Documents\73003\DWG\73003P.DWG 3:51 PM \* 08-JAN-2008

**SUMMIT**  
 ENGINEERING CORPORATION  
 1421 E. SUNSET RD. SUITE 17, LAS VEGAS, NV. 89102  
 PHONE: (702) 252-3228 FAX: (702) 252-3247

109054 RGM  
 99411 CC 100383

CLV # 10744843-4

HTF# 06-23097