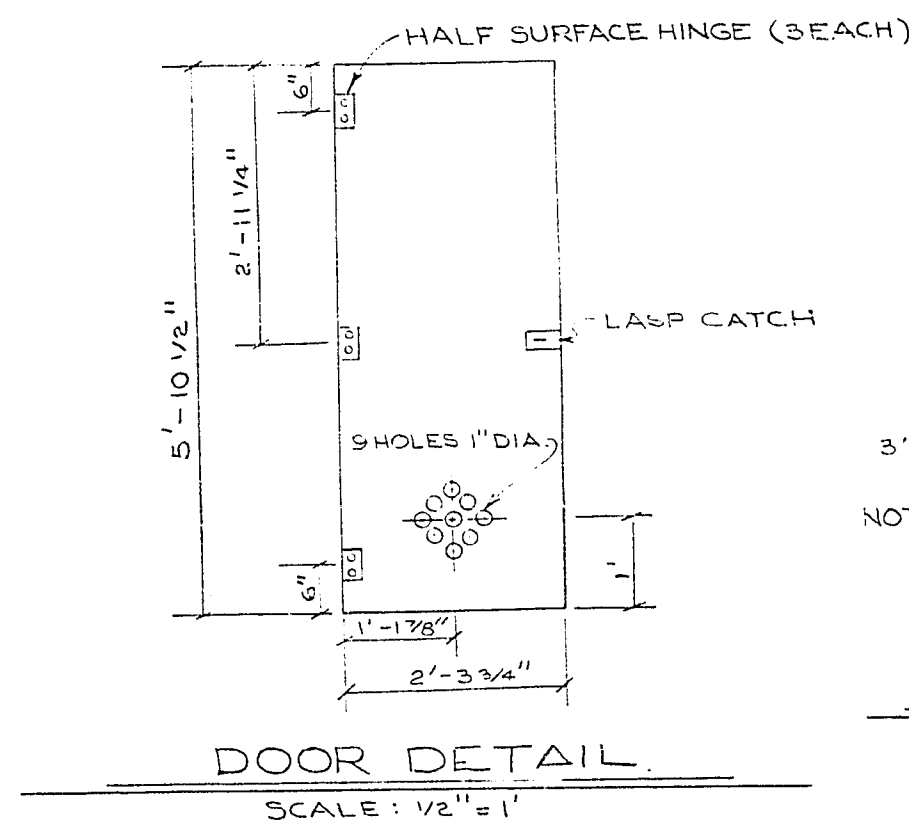
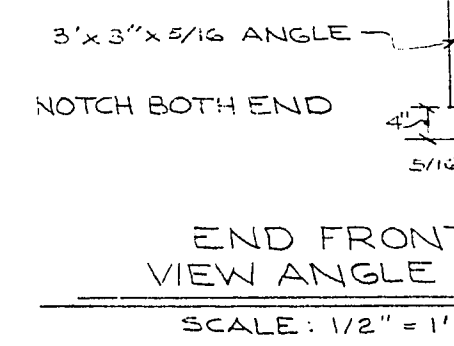


**FOUNDATION PLAN**  
SCALE: 1/4" = 1'-0"

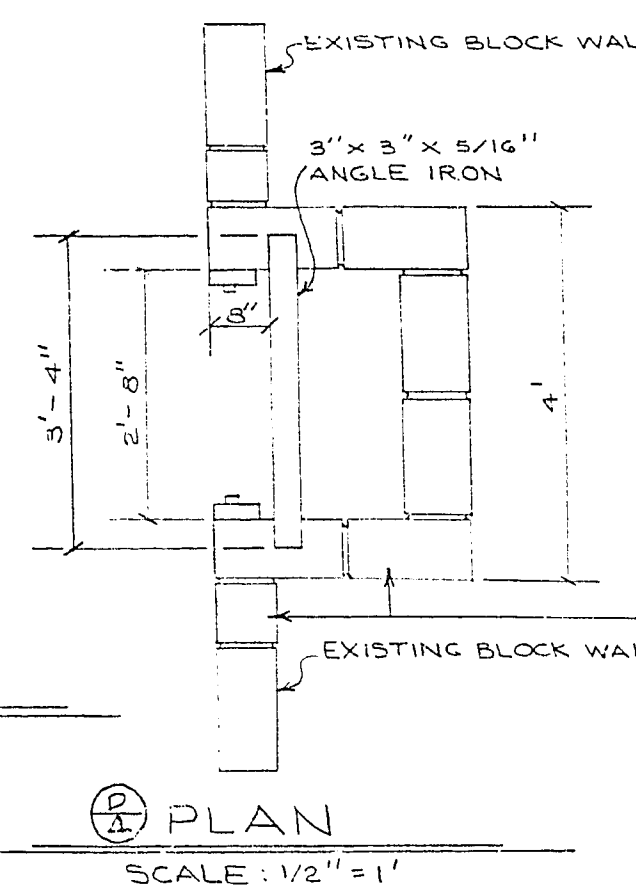
NOTE: ALL CORNERS, DOOR OPENINGS, WINDOW OPENINGS AND WALL INTERSECTIONS THE CELLS OF THE BLOCK ARE TO BE FILLED WITH CONCRETE TO THE TOP, & REINFORCED AS SHOWN.



**DOOR DETAIL**  
SCALE: 1/2" = 1'

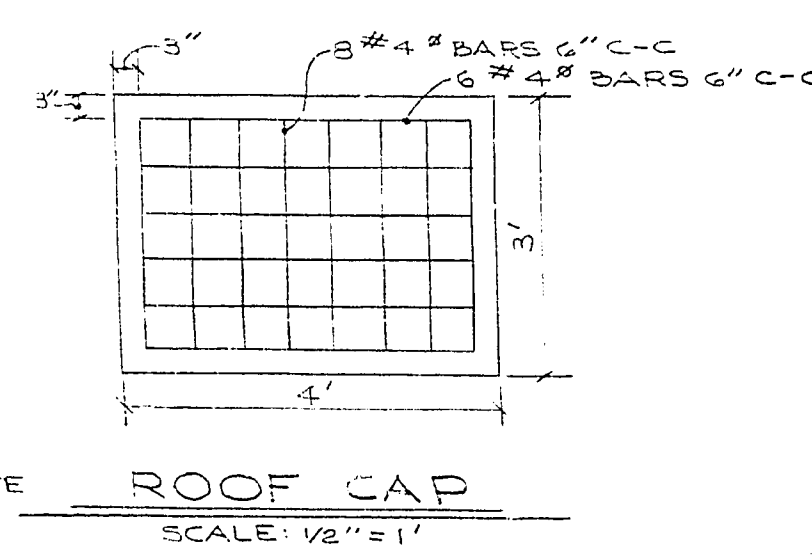


**END FRONT VIEW ANGLE IRON**  
SCALE: 1/2" = 1'

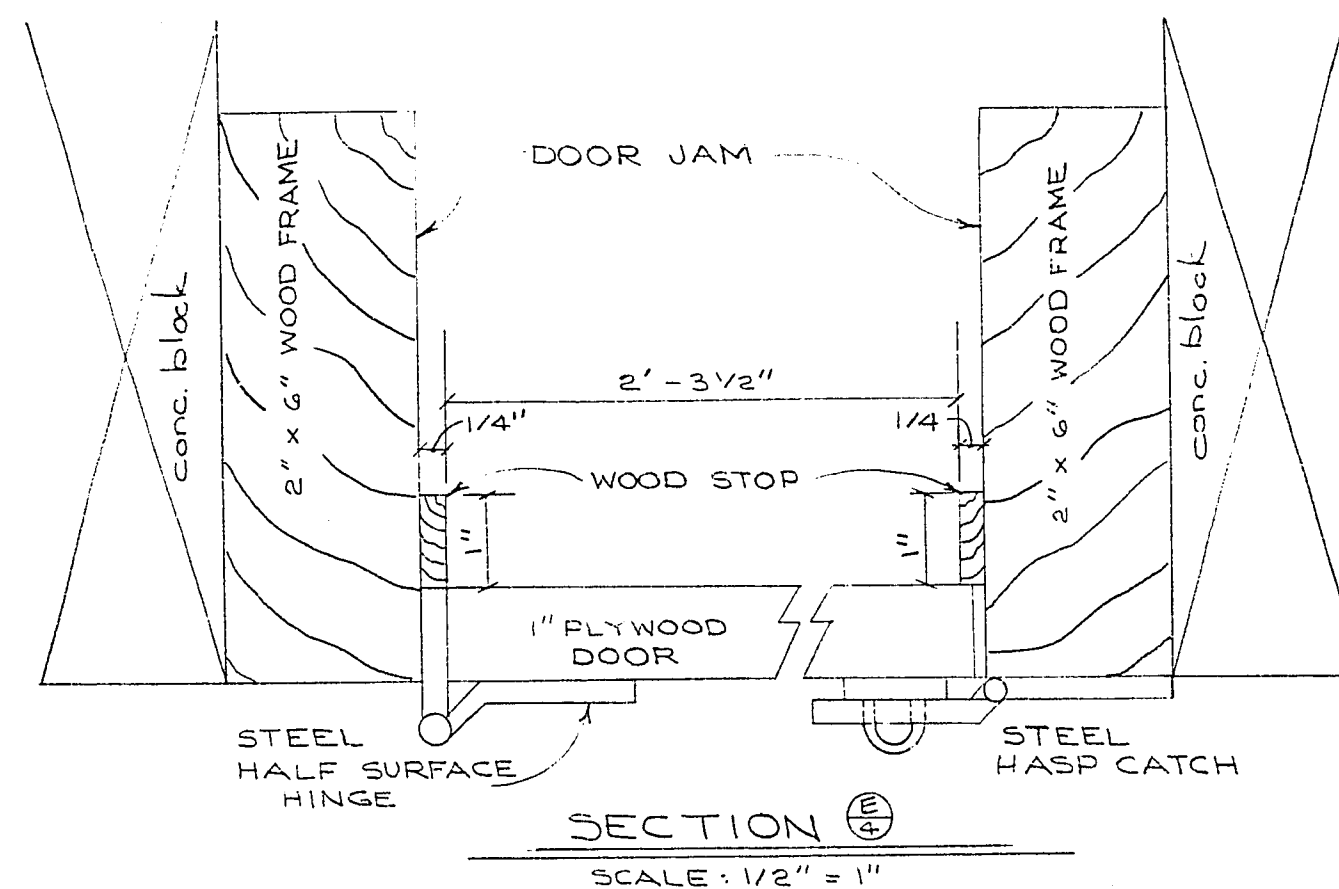


**PLAN**  
SCALE: 1/2" = 1'

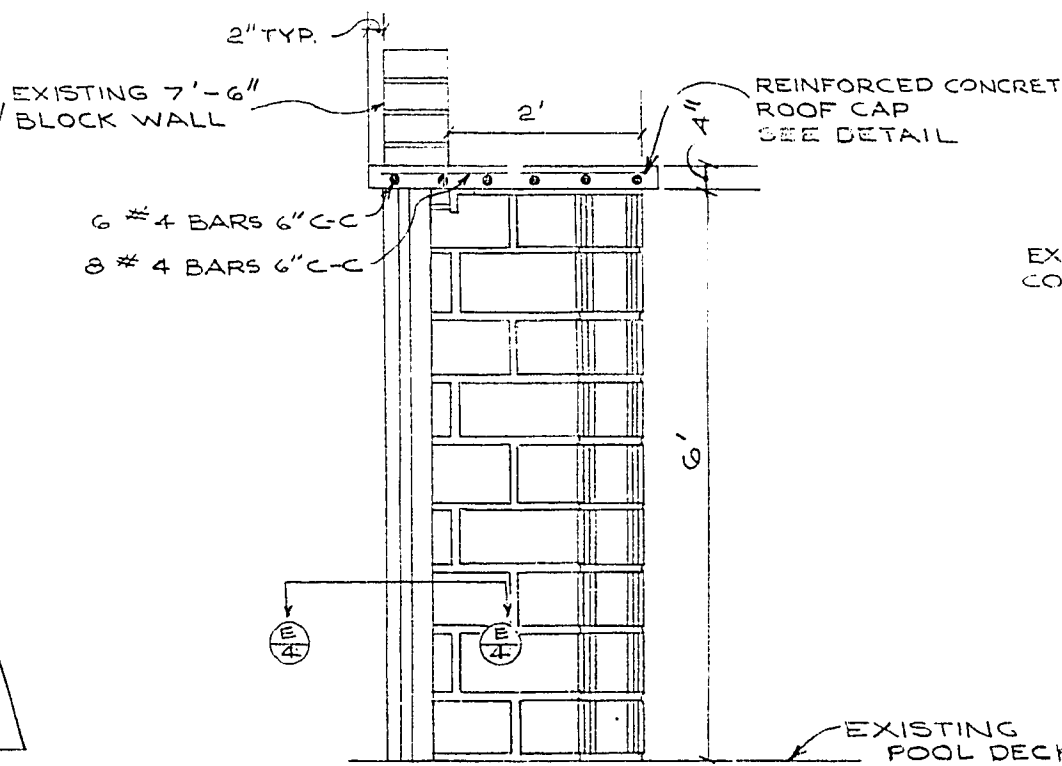
STANDARD CONCRETE BLOCK 8" x 8" x 16" 8" x 8" TAN IN COLOR WITH MATCHING GROUT. RAKE ALL JOINTS RUNNING BOND.



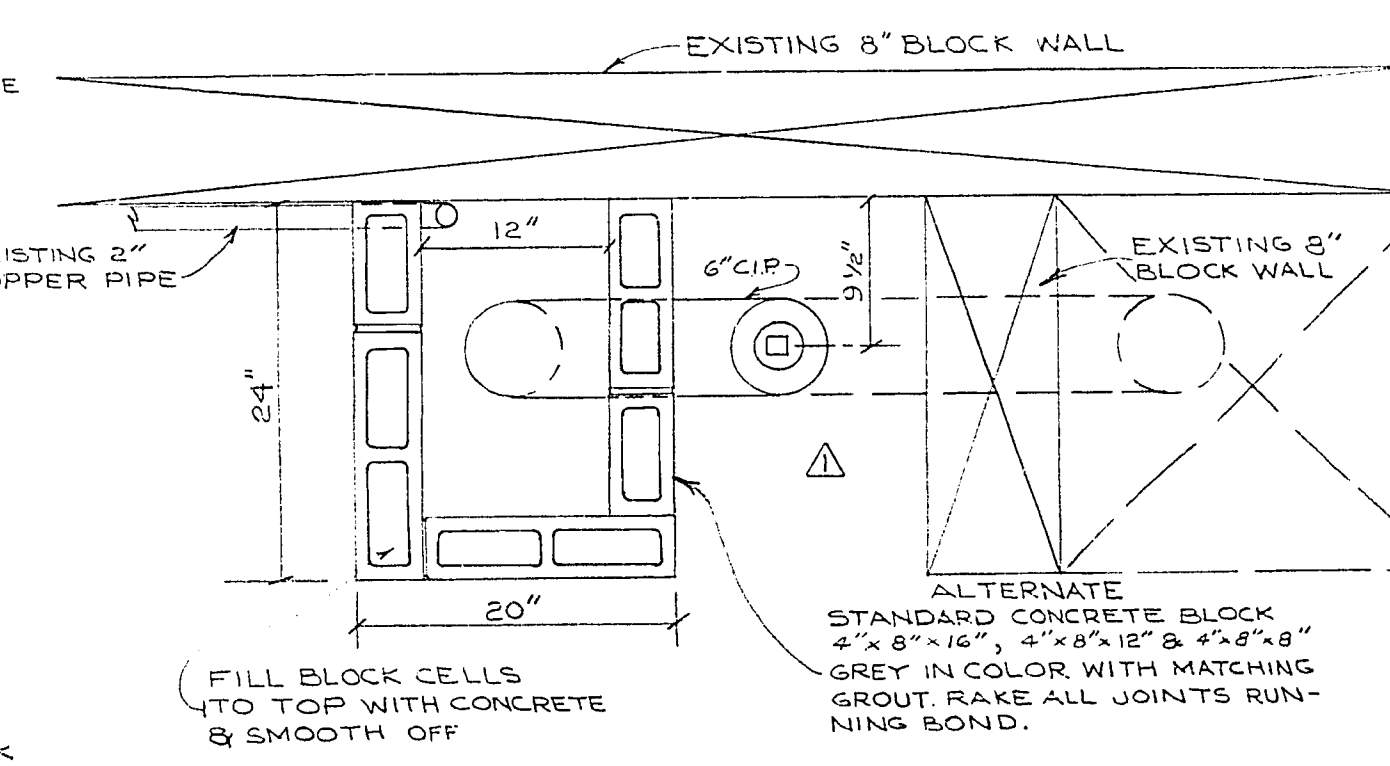
**ROOF CAP**  
SCALE: 1/2" = 1'



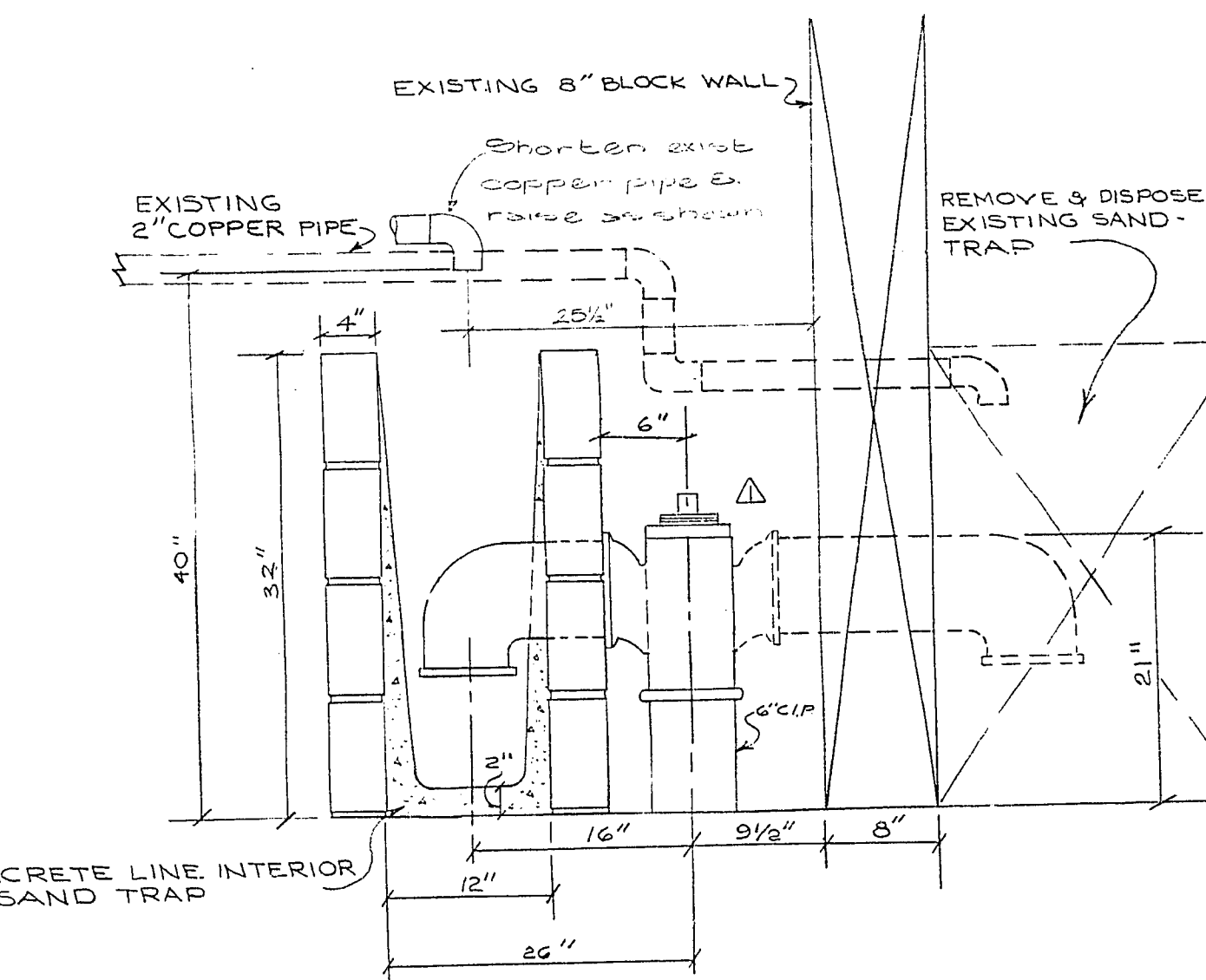
**SECTION**  
SCALE: 1/2" = 1'



**ELEVATION DETAIL CHLORINATOR HOUSING**  
SCALE: 1/2" = 1'

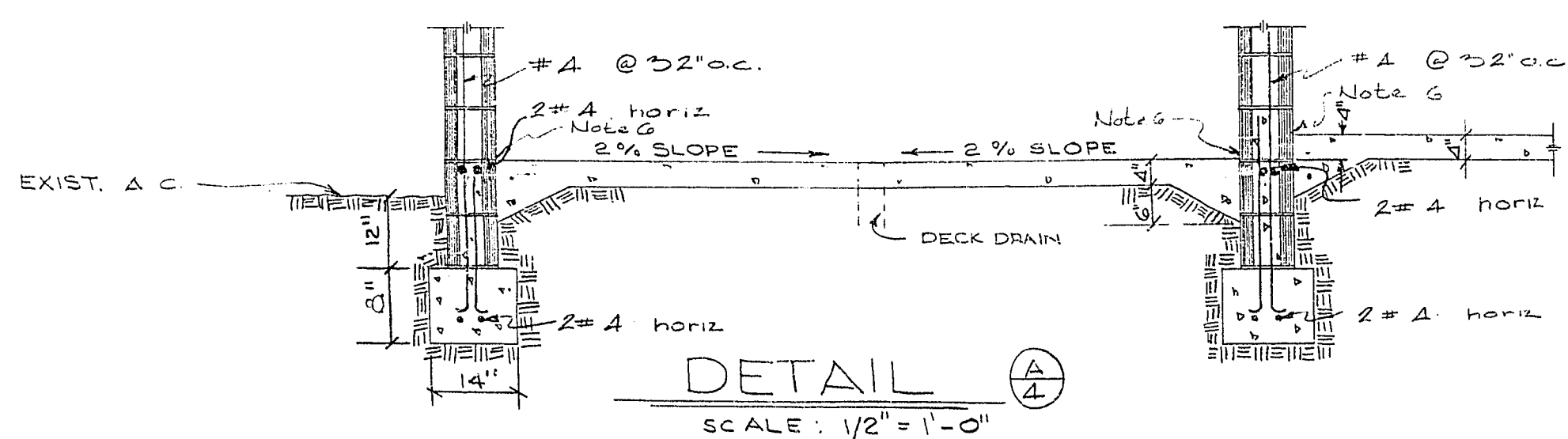


**SAND TRAP TOP VIEW**  
SCALE: 1" = 1'

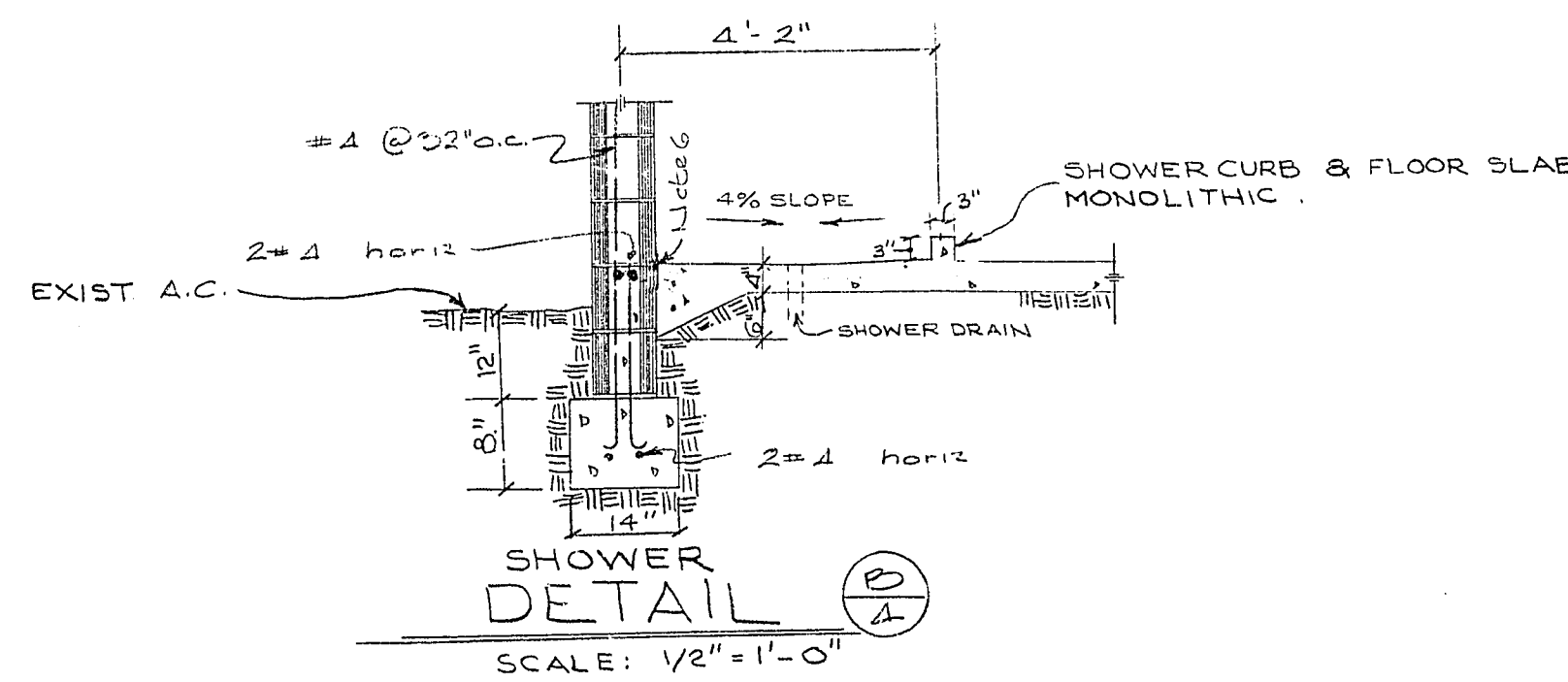


**SAND TRAP SIDE VIEW**  
SCALE: 1" = 1'

RELOCATE SYPHON BY ROTATING 180° AND SHORTENING EXISTING FITTING AS SHOWN.



**DETAIL A**  
SCALE: 1/2" = 1'-0"



**SHOWER DETAIL B**  
SCALE: 1/2" = 1'-0"

**GENERAL NOTES**

- 1- DESIGN STRESSES: CONCRETE 2500 PSI MIN. AT 28 DAYS FOR FOOTINGS, 3000 PSI MIN. AT 28 DAYS FOR FLOORS, REINFORCING STEEL A615 GRADE 40 STEEL - 40,000 PSI YIELD.
- 2- USE TYPE 3 CEMENT ASTM C150. DO NOT PLACE CONCRETE IF TEMPERATURE FALLS BELOW 40°F.
- 3- CONCRETE MASONRY SHALL BE LIGHT WEIGHT HOLLOW LOAD BEARING. UNITS SHALL HAVE AN ULTIMATE COMPRESSIVE STRENGTH OF 1350 PSI AT 28 DAYS. GROUT SOLID TO FLOOR LINE. SUBMIT SAMPLES TO THE ENGINEER FOR TEXTURE, SHAPE AND COLOR SELECTION.
- 4- ALL INTERIOR CONCRETE FLOORS SHALL RECEIVE COLORUNDUM HARDENER AND COLORUNDUM SEALER BY A.C. HORN, OR APPROVED EQUAL. COLOR TO BE SELECTED BY THE ENGINEER.
- 5- CONCRETE PROTECTION FOR REINFORCING SHALL BE 3' CLEAR FOR FOOTINGS
- 6- CAULK WITH WATERPROOF CAULKING AS APPROVED BY THE ENGINEER.

EXISTING UTILITIES ARE LOCATED ON THE PLANS FOR THE CONTRACTOR'S USE ONLY. THE CONTRACTOR SHALL BE RESPONSIBLE FOR VERIFYING THE LOCATION AND DEPTH OF ALL UTILITIES. THE CITY BEARS NO RESPONSIBILITY FOR UTILITIES NOT SHOWN ON THE PLANS OR NOT IN THE LOCATION SHOWN ON THE PLANS.

**CONTRACT DRAWING**  
MAY 10 1974

|   |                  |                                      |               |
|---|------------------|--------------------------------------|---------------|
| CITY OF LAS VEGAS NEVADA<br>DEPARTMENT OF PUBLIC WORKS<br>SERVICES DIVISION |                  |                                      |               |
| "COVE SWIMMING POOL"<br>BATH HOUSE FOUNDATION PLAN                          |                  |                                      |               |
| W.D. NO. 32-25  | F.B.K. NO. NONE  | DATE                                 | DRAWING NO.   |
| SC. (N) AS SHOWN  | SC. (N) AS SHOWN | 21 SEPT. 73                          | 674-17        |
| DES. C. MALONE  |                  | FILE NO.                             |               |
| DR. F.W.  |                  | APPROVED BY DIRECTOR OF PUBLIC WORKS |               |
|   |                  | 13 NOV 73                            |               |
|   |                  |                                      | SHEET 4 OF 10 |