

MONUMENT TIE MAP

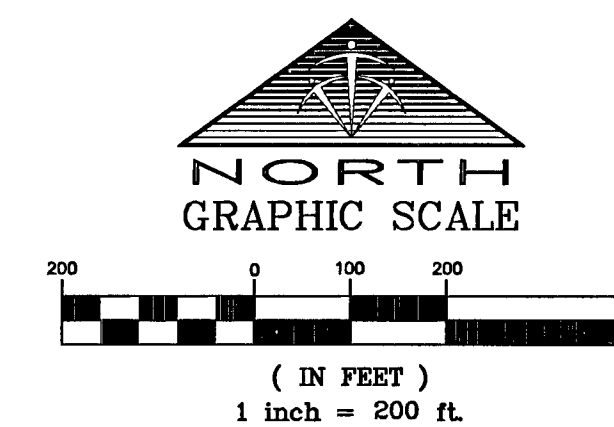
FOR PERMIT #7343, SID PROJECT #607, SUBPROJECT #3.8
EGAN CREST DRIVE FROM FARM ROAD TO GRAND TETON

BEING A PORTION OF

CLIFFS EDGE PARENT

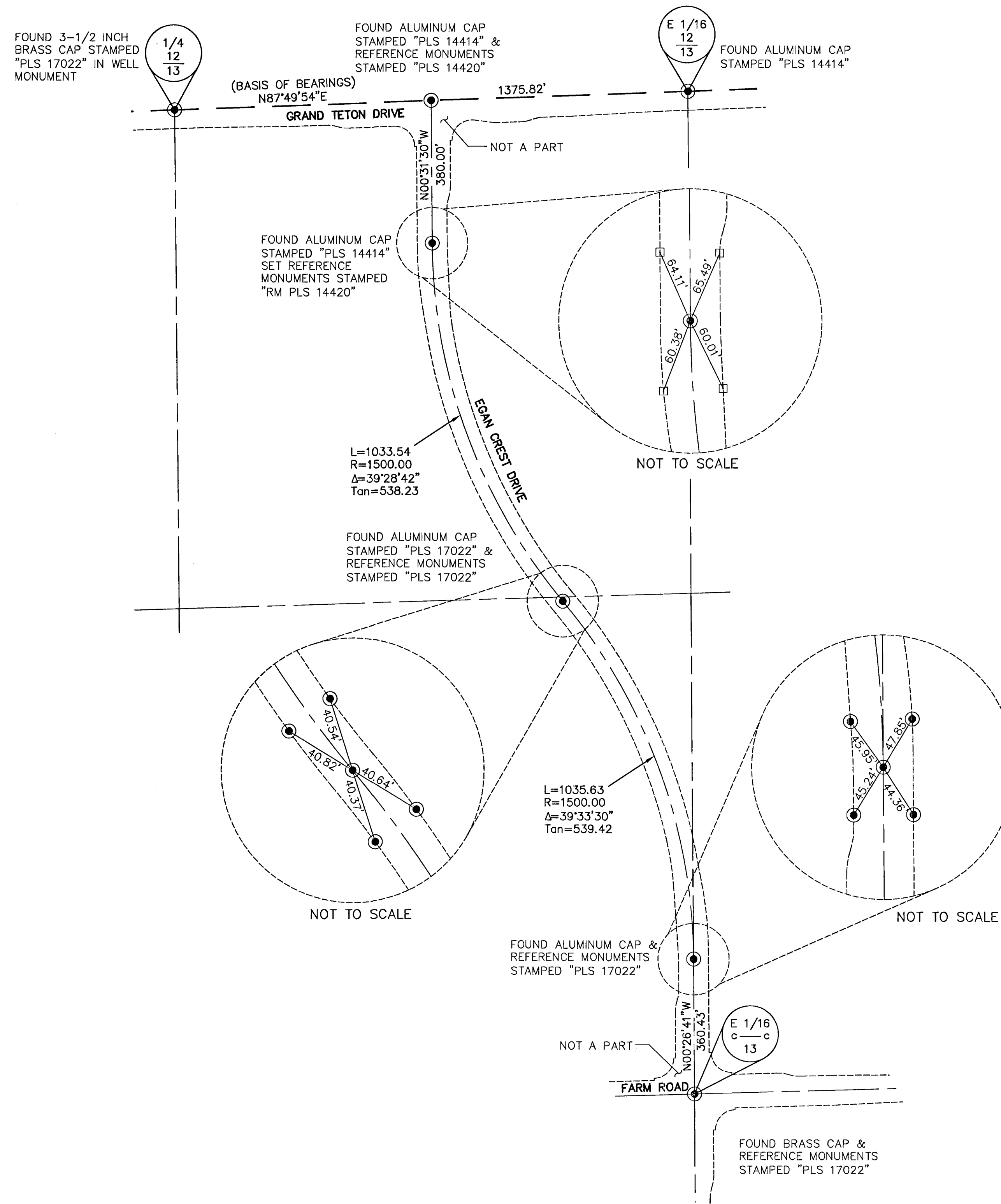
(A COMMON INTEREST COMMUNITY)

BEING PORTIONS OF SECTION 13 AND SECTION 24, TOWNSHIP 19 SOUTH,
RANGE 59 EAST, M.D.M., CITY OF LAS VEGAS,
CLARK COUNTY, NEVADA



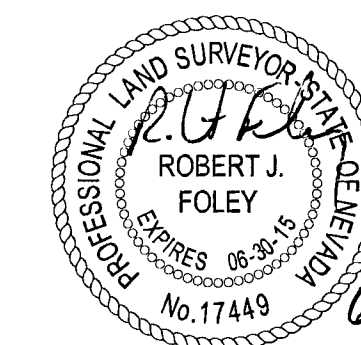
LEGEND

- STREET CENTER LINE
- SECTION LINE
- REFERENCE MONUMENT DISTANCE
- FOUND MONUMENT AS DESCRIBED
- FOUND TYPE IV-A REFERENCE MONUMENT STAMPED "RM PLS 14420"



SURVEYOR'S CERTIFICATE

I, ROBERT J. FOLEY, A PROFESSIONAL LAND SURVEYOR LICENSED IN THE STATE OF NEVADA, DO HEREBY CERTIFY THAT THE MONUMENTS HAVE BEEN SET AND THE TIE DISTANCES ESTABLISHED AS SHOWN HEREON. THIS SURVEY WAS COMPLETED ON AUGUST 2, 2012.



ROBERT J. FOLEY
PROFESSIONAL LAND SURVEYOR
NEVADA LICENSE NO. 17449

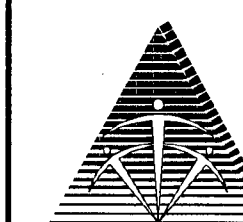
MAP REFERENCES

BOOK 118 PAGE 88 OF PLATS
FILE 164 PAGE 22 OF SURVEYS
FILE 180 PAGE 48 OF SURVEYS

BASIS OF BEARINGS

NORTH 87°49'54" EAST BEING THE BEARING OF THE NORTH LINE OF THE NORTHWEST QUARTER (NW 1/4) OF THE NORTHEAST QUARTER (NE 1/4) OF SECTION 13, TOWNSHIP 19 SOUTH, RANGE 59 EAST, M.D.M., AS SHOWN IN BOOK 118 OF PLATS, PAGE 88 ON FILE IN THE CLARK COUNTY RECORDER'S OFFICE, CLARK COUNTY NEVADA.

BOOK 118, PAGE 88 OF PLATS
FMP-4358



TRI-CORE
SURVEYING, LLC
6781 WEST CHARLESTON BLVD.
LAS VEGAS, NEVADA 89146
TEL (702) 821-1554 FAX (702) 870-4378

058-4816
SHEET 1 OF 1