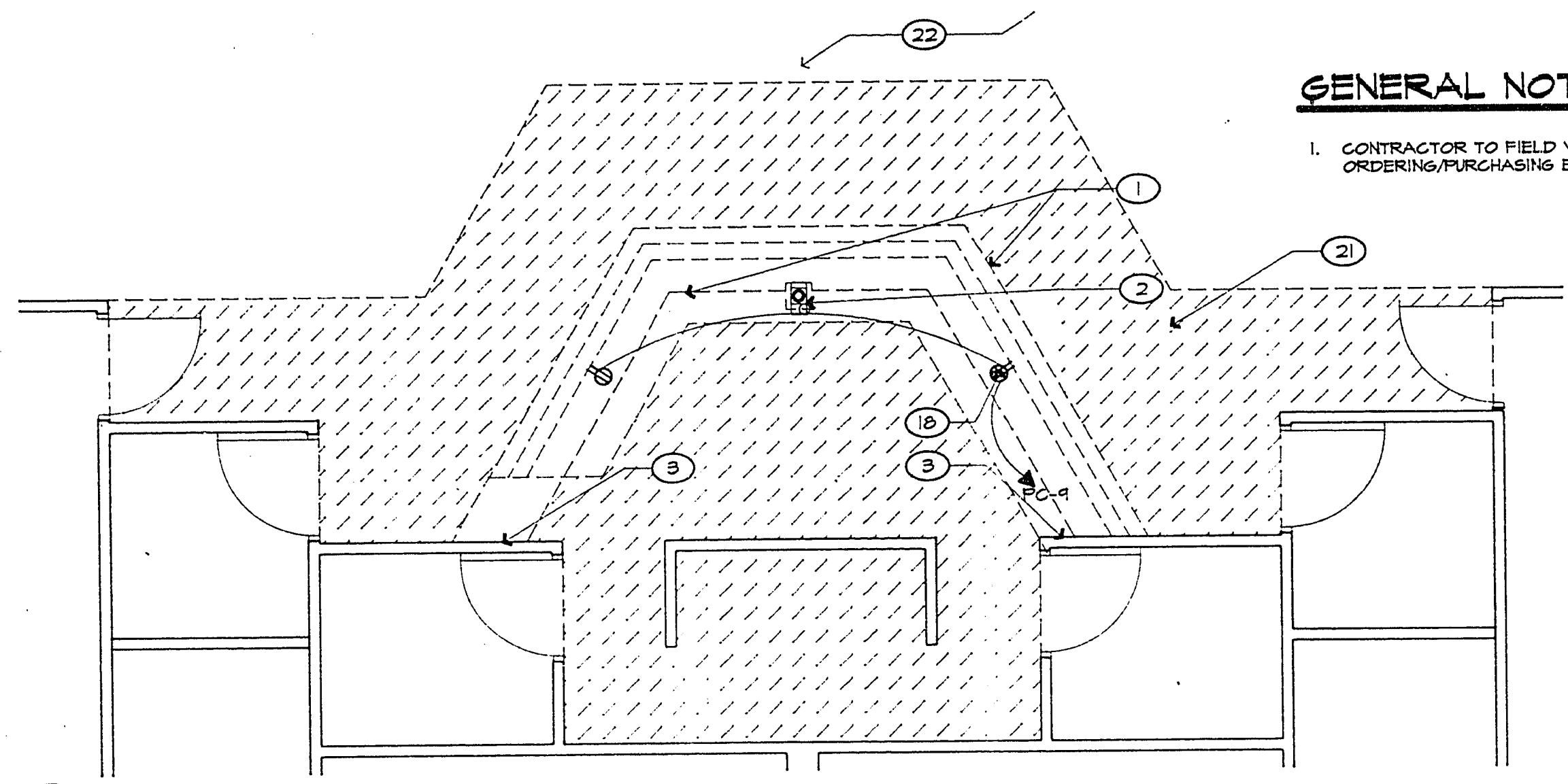


**KEYED NOTES**

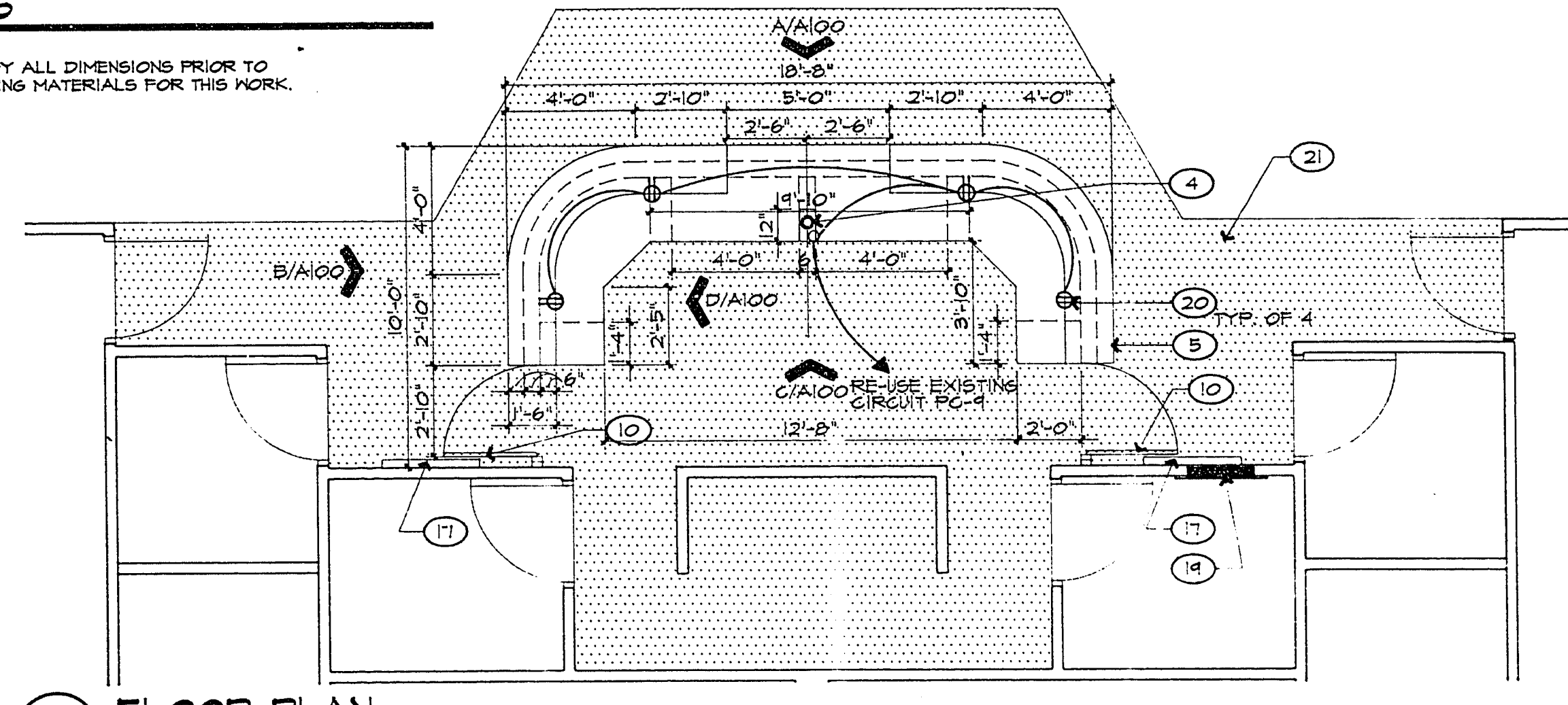
1. REMOVE EXISTING CASEWORK
2. REMOVE EXISTING 6" P. BD. & STUD FURRING AROUND PIPE COLUMN TO SOFFIT ABOVE. CONDUIT TO REMAIN.
3. PATCH & REPAIR EXISTING WALL AS REQUIRED FROM REMOVAL OF EXISTING CASEWORK. PAINT TO MATCH EXISTING WALLS
4. 5/8" GYP. BD. O/ MTL. STUDS, FURR COL. FLUSH W/ COUNTER BELOW.
5. NEW PLASTIC LAMINATE CASEWORK (COVER ALL EXPOSED AND SEMI-EXPOSED SURFACES)
6. PLASTIC LAMINATE COUNTERTOP
7. 3-DRAWER BASE CABINET - LAMINATED
8. ADJUSTABLE PLASTIC LAMINATE SHELF
9. 4-DRAWER PLASTIC LAMINATE BASE CABINET
10. PLASTIC LAMINATE SHINGING DOORS. PROVIDE ADA ACCESSIBLE LATCH IN CLOSED AND OPEN POSITIONS ALONG REMOVE EXISTING FOLDING DOOR, FRAME AND TRACK. SALVAGE TO OWNER. REPAIR JAMBS AND HEAD AS REQUIRED TO RECEIVE NEW STOREFRONT SYSTEM
11. EXISTING HALL TO REMAIN
12. NEW ANODIZED ALUMINUM STOREFRONT SYSTEM. SECURE TO EXISTING CONSTRUCTION
13. ALUMINUM DOORS W/ 1" INSULATING TEMPERED SAFETY GLAZING. HARDWARE TO INCLUDE PUSH, PULL AND CLOSER ON BOTH DOORS
14. 1" INSULATING TEMPERED SAFETY GLAZING
15. SEALANT BOTH SIDES, TYP
16. BULLETIN BOARD CABINET TO BE EQUAL TO CLARIDGE CATALOG NUMBER 3094. BACK PANEL AND COLOR TO BE CHOSEN BY ARCHITECT. ANCHOR DIRECTLY THROUGH DRYWALL TO STUDS.
17. REMOVE EXISTING OUTLETS, CONDUIT AND WIRE FROM COUNTER TO BE REMOVED. (TYPICAL)
18. EXISTING PANEL "PC"
19. MOUNT OUTLETS @ 3'-0" A.F.F. VERIFY LOCATION W/ ARCH. PRIOR TO ROUGH-IN
20. REMOVE EXISTING QUARRY TILE FLOORING AND BASE. INSTALL NEW CARPET AND RUBBER BASE IN AREAS INDICATED ON DRAWINGS. SEE SPECIFICATIONS. COLOR BY ARCHITECT.
21. EXISTING CARPET - SEE ALTERNATE A & B THIS SHEET.
22. REMOVE EXISTING CARPET & BASE. INSTALL NEW CARPET & RUBBER BASE IN AREAS INDICATED. SEE SPECS FOR TYPES - COLOR BY ARCHITECT.
23. EXISTING QUARRY TILE FLOORING TO REMAIN.

**GENERAL NOTES**

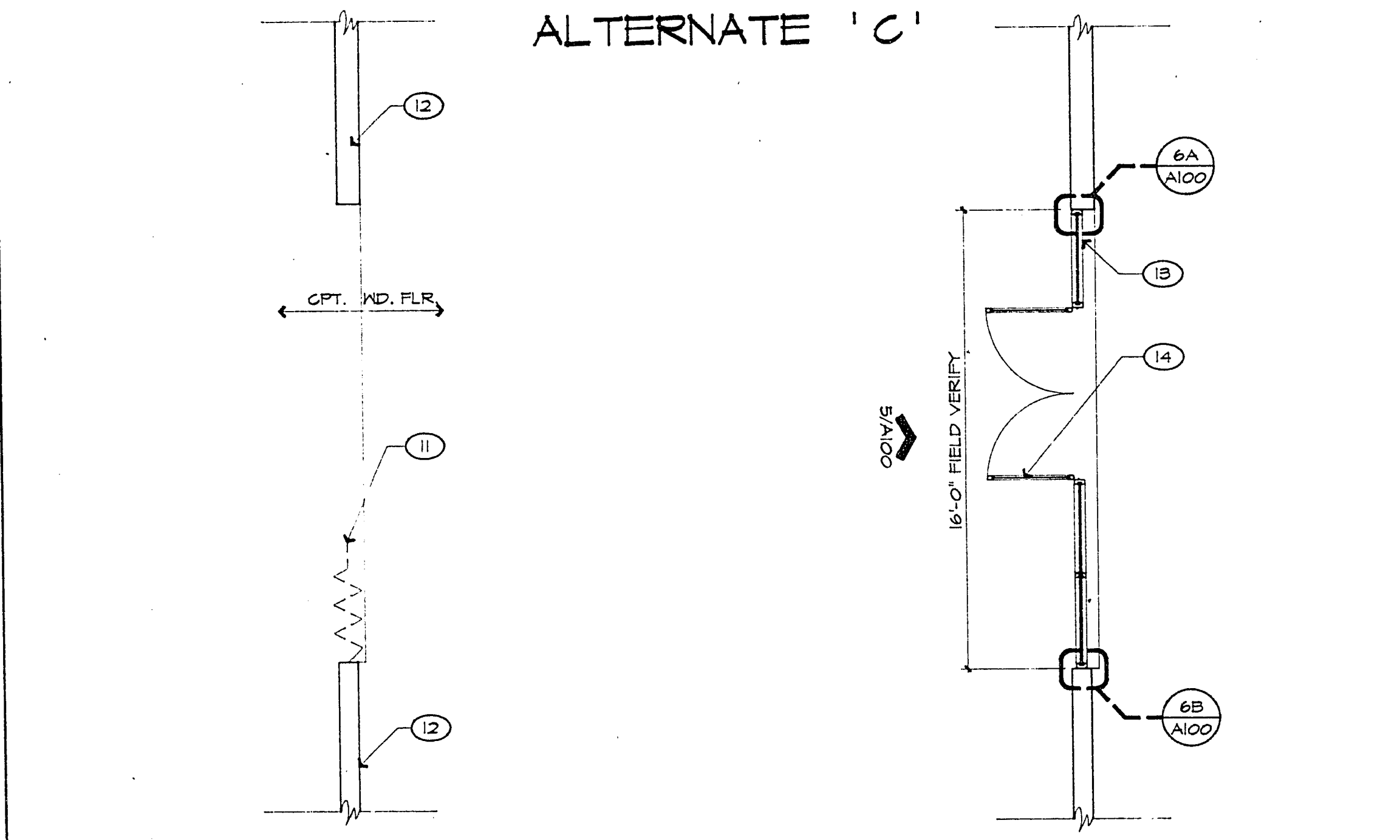
1. CONTRACTOR TO FIELD VERIFY ALL DIMENSIONS PRIOR TO ORDERING/PURCHASING BUILDING MATERIALS FOR THIS WORK.



**1 DEMOLITION PLAN @ Existing Casework** 1/4" = 1'-0"

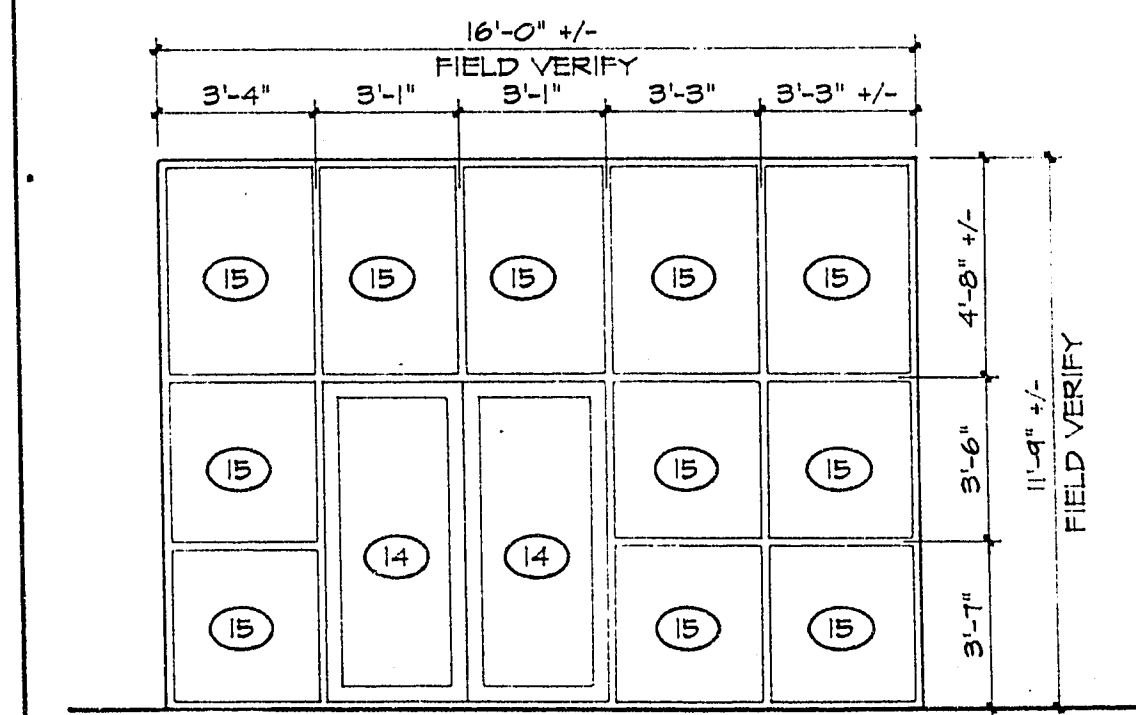


**2 FLOOR PLAN @ New Casework** 1/4" = 1'-0"

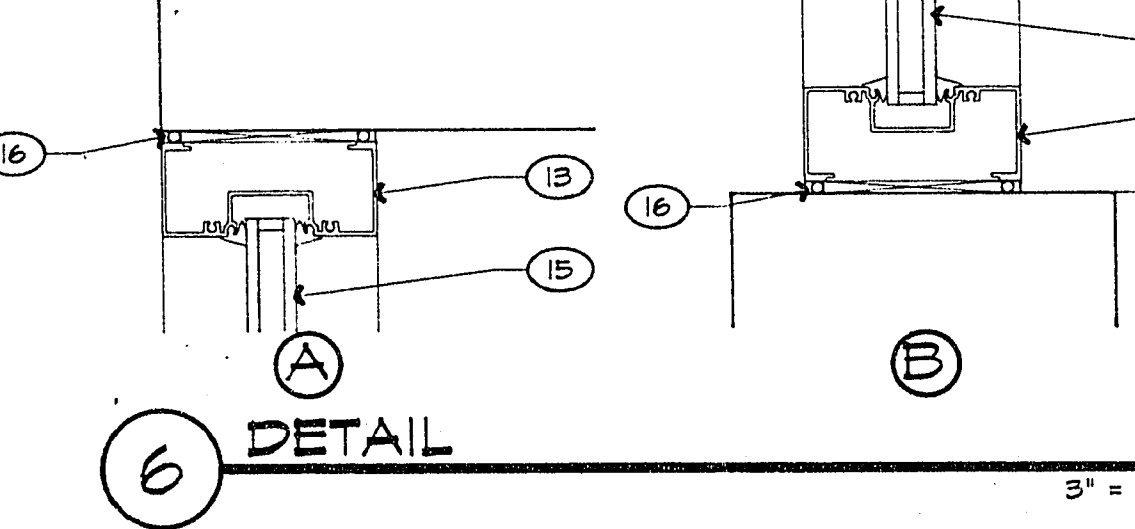


**3 DEMOLITION PLAN @ Multi-Purpose Room** 1/4" = 1'-0"

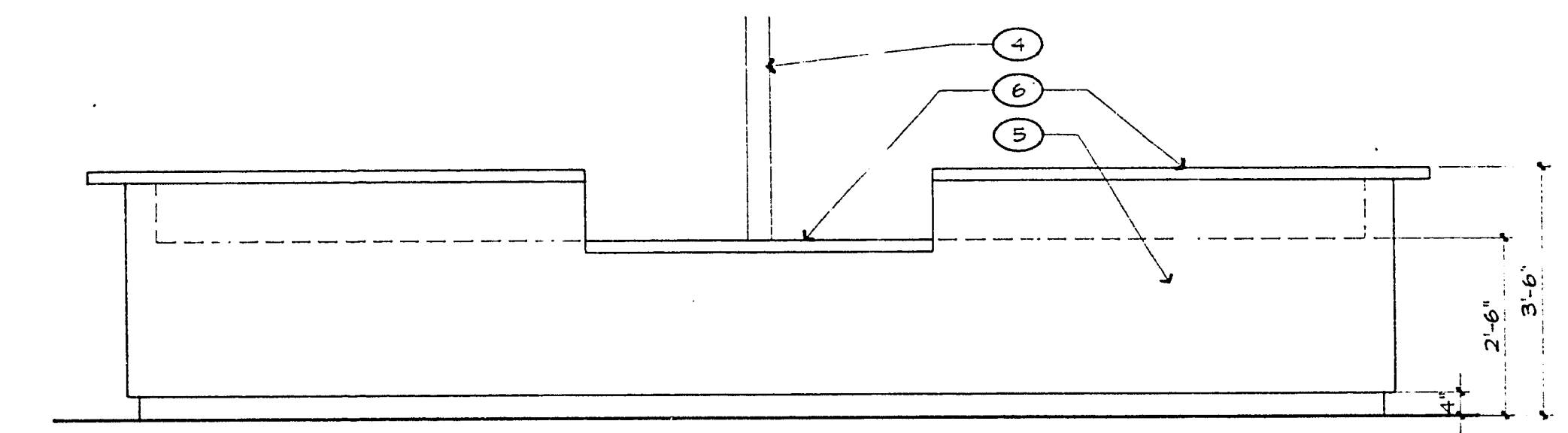
**4 NEW WINDOW WALL PLAN @ Multi-Purpose Room** 1/4" = 1'-0"



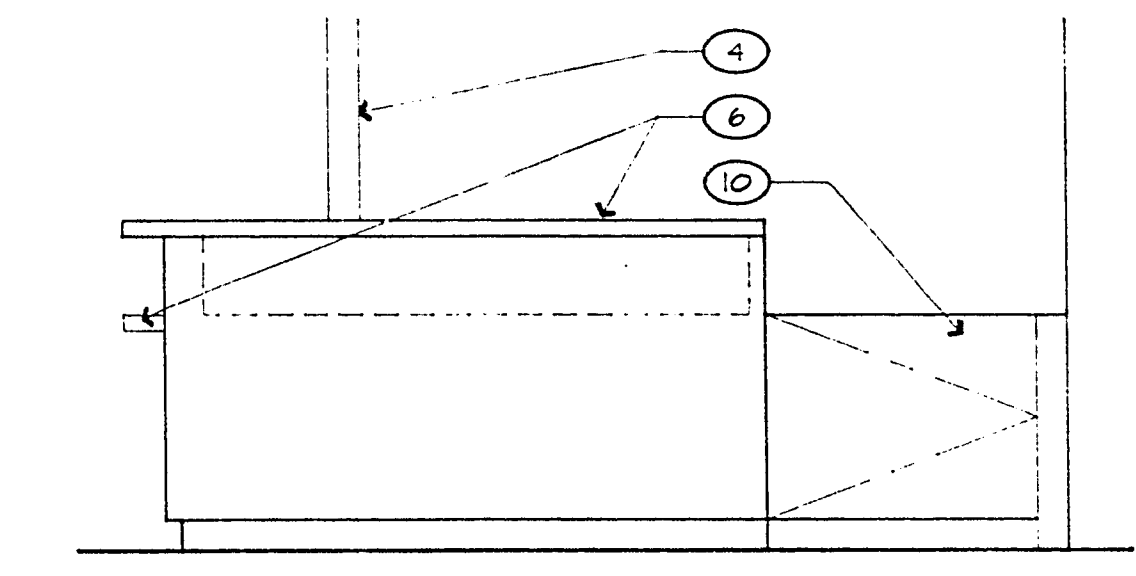
**5 WINDOW WALL ELEVATION @ Multi-Purpose Room** 1/4" = 1'-0"



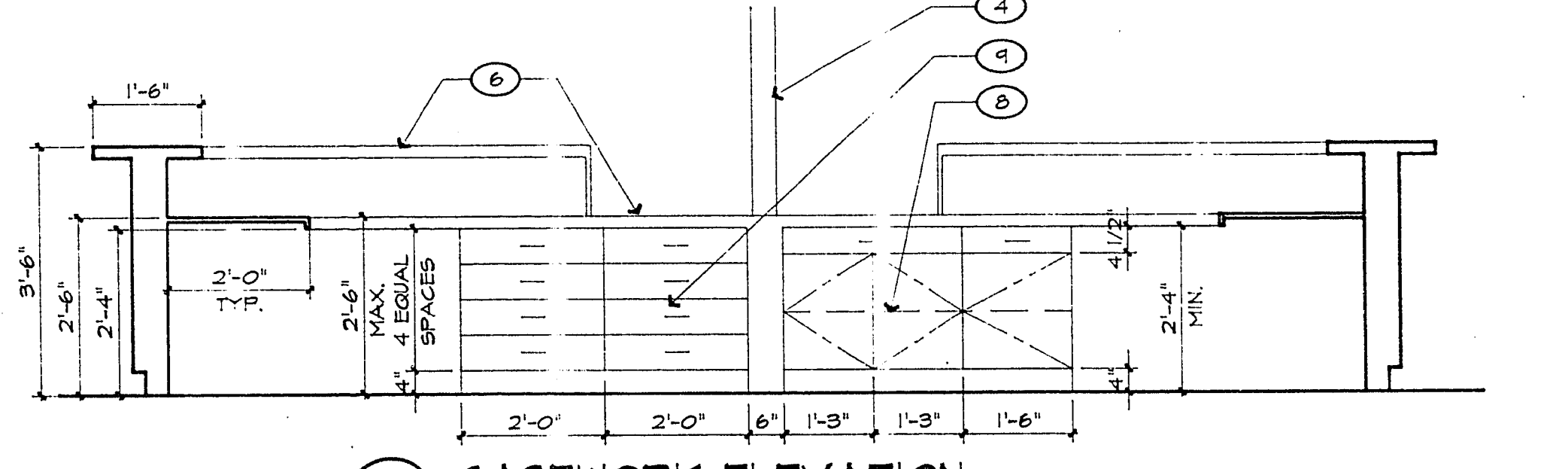
**6 DETAIL** 3" = 1'-0"



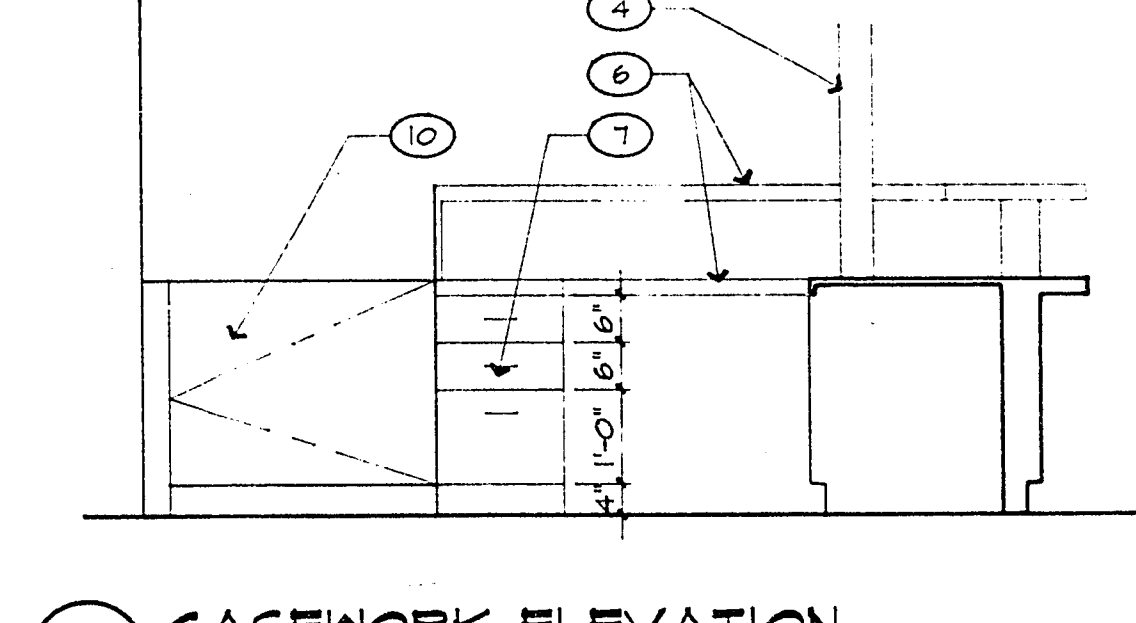
**A CASEWORK ELEVATION** 1/2" = 1'-0"



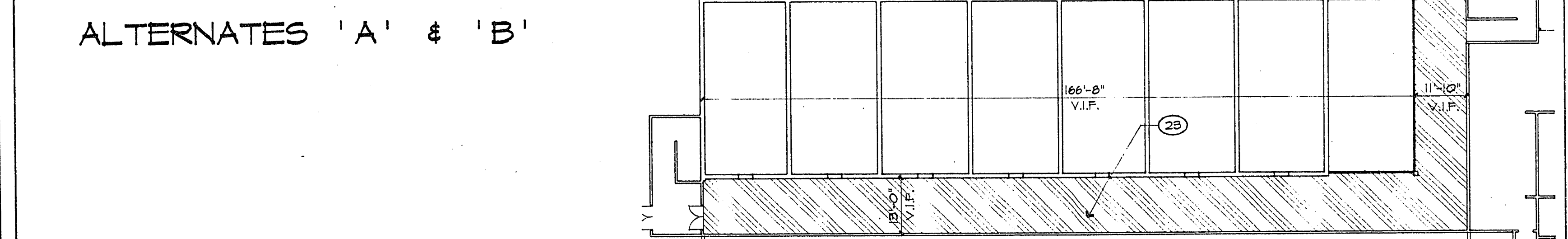
**B CASEWORK ELEVATION** 1/2" = 1'-0"



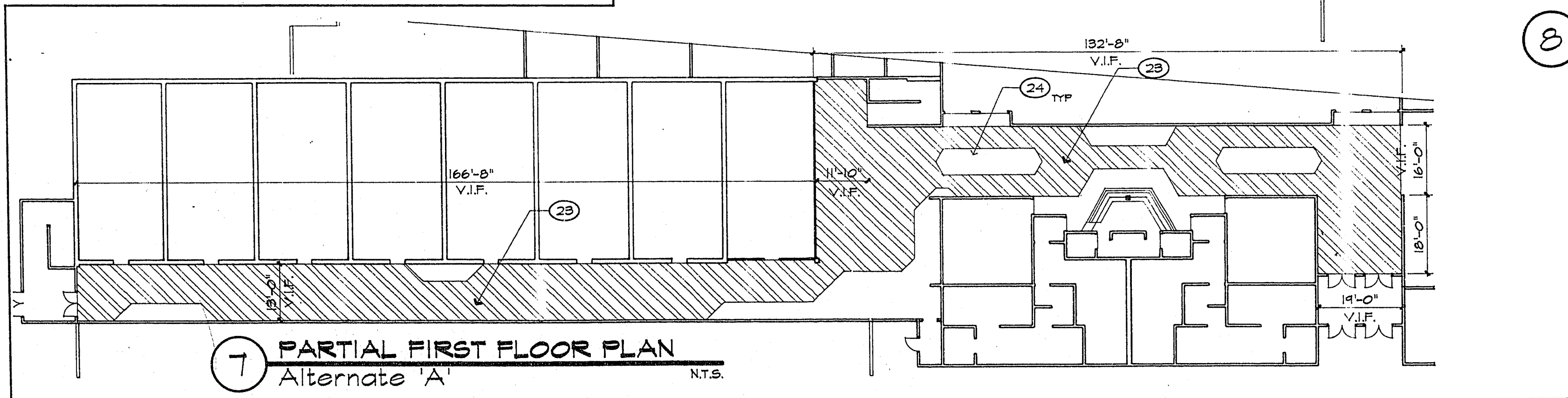
**C CASEWORK ELEVATION** 1/2" = 1'-0"



**D CASEWORK ELEVATION** 1/2" = 1'-0"



**8 PARTIAL SECOND FLOOR PLAN** Alternate 'B' N.T.S.



**7 PARTIAL FIRST FLOOR PLAN** Alternate 'A' N.T.S.