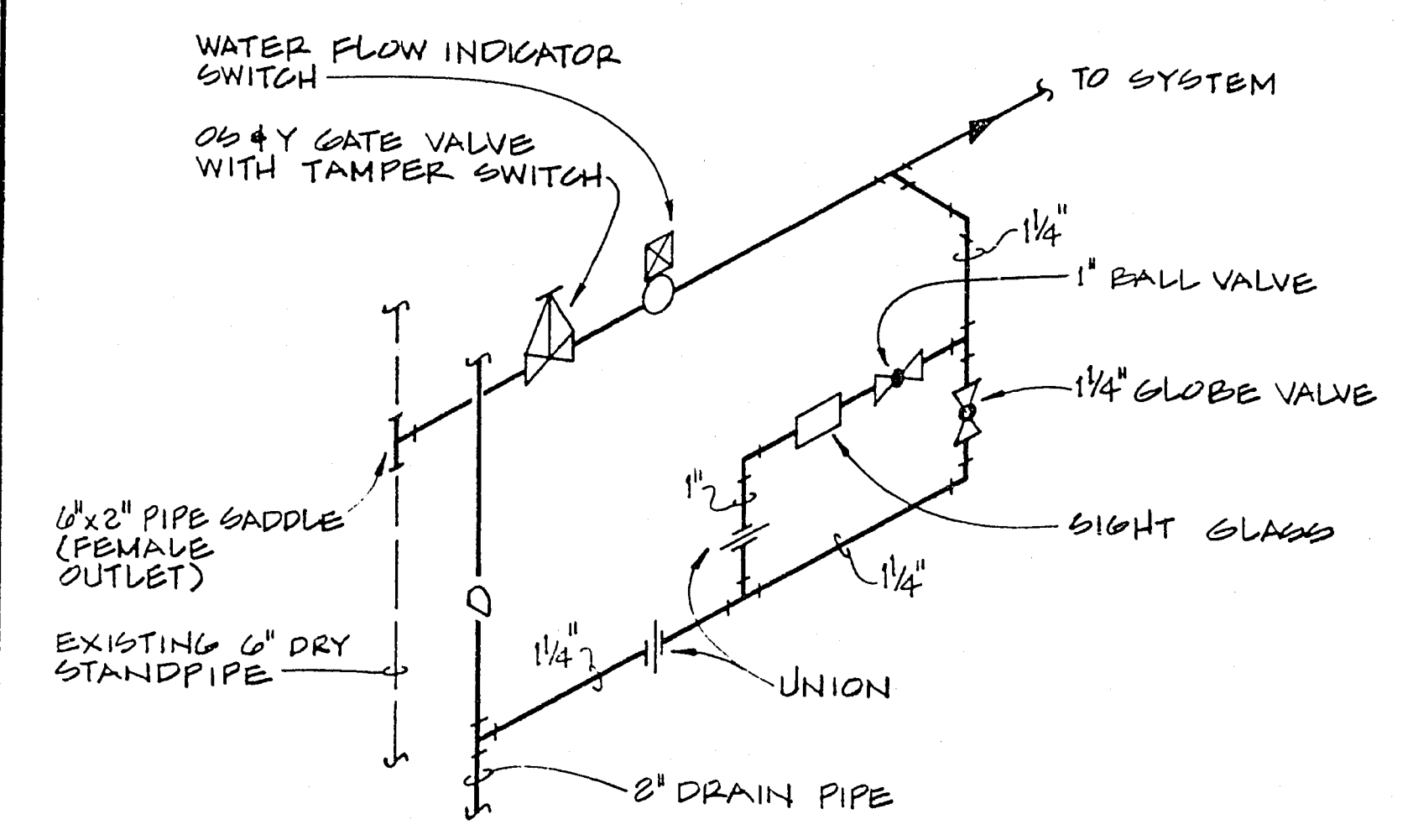
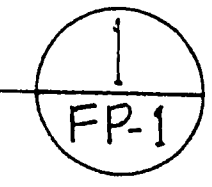


### PUMP SCHEDULE

SYMBOL	SERVICE	TYPE	GPM	HEAD (FT.)	RPM	ELECTRICAL DATA				OPER. WEIGHT (LBS.)	REMARKS
						HP	VOLTS	PHASE	HERTZ		
	FIRE PUMP	HORIZONTAL SPLIT CASE	900	250	3,500	100	460	3	60	400	"AURORA" MODEL S-481-110
	JOCKEY PUMP	HORIZONTAL TURBINE	5	250	3,500	1/2	460	3	60	90	"AURORA" MODEL JP-254-S



**TEST CONNECTION ASSEMBLY**  
NOT TO SCALE



### GENERAL NOTES

- CONTRACTOR SHALL VERIFY CONDITIONS ON THE SITE PRIOR TO BID. EXISTING WORK DAMAGED OR CUT INTO DURING CONSTRUCTION SHALL BE PATCHED, REPAIRED, PAINTED AND FINISHED TO MATCH EXISTING ADJACENT SURFACES IN TEXTURE, FINISH AND COLOR.
- EXISTING UTILITIES SHOWN ARE THOSE REQUIRED TO INDICATE APPROXIMATE LOCATION OF NEW SERVICES AND SHOULD NOT BE CONSIDERED AS A COMPLETE SURVEY OF EXISTING UTILITIES.
- LOCATION AND ELEVATION OF EXISTING UNDERGROUND UTILITIES ARE FROM BEST AVAILABLE RECORDS AND SHALL BE CONSIDERED AS APPROXIMATE. BEFORE ANY WORK IS STARTED, THE CONTRACTOR SHALL VERIFY COORDINATES, ELEVATION AND SIZES OF NOTED EXISTING UTILITIES. DISCREPANCIES BETWEEN FIELD DATA AND DATA ON PLANS AND SPECIFICATIONS SHALL BE REPORTED TO THE ARCHITECT. DO NOT PROCEED WITH INSTALLATION IN AREAS OF DISCREPANCY UNTIL DISCREPANCIES HAVE BEEN RESOLVED.
- VALVES SHALL BE LINE SIZE UNLESS OTHERWISE NOTED.
- NO HOLES SHALL BE DRILLED OR CUT IN OR THROUGH ANY STRUCTURAL ELEMENT WITHOUT APPROVAL OF THE ARCHITECT.
- SLEEVE AND GROUT ALL PIPE PENETRATIONS THROUGH FLOOR OR WALLS.
- VERIFY ELECTRICAL POWER AVAILABLE PRIOR TO MATERIAL OR MATERIAL OR EQUIPMENT PURCHASE.
- INSTALL A PARTIAL WET PIPE SPRINKLER SYSTEM FOR TOWER AS INDICATED ON THE DRAWING. MAIN PIPING IS OVERSIZED FOR FUTURE EXPANSION OF SPRINKLER SYSTEM TO COVER ALL AREAS OF THE TOWER, PER NFPA #13. COMMISSION CHAMBERS SHALL HAVE A COMPLETE WET PIPE SPRINKLER SYSTEM AS INDICATED AND AS SPECIFIED.

### FIRE SPRINKLER DESIGN CONDITIONS:

Existing water main fire loop around City Hall Building was tested by the Fire Department of the City of Las Vegas and following data is available.

- Static Pressure - 70 PSIG
- Residual Pressure - 20 PSIG @ 3900 GPM

### FIRE PROTECTION LEGEND

SYMBOL	ABBR.	IDENTIFICATION
		EXISTING PIPING OR EQUIPMENT
	F	FIRE PROTECTION PIPING
	D	DRAIN PIPING
		WATER FLOW INDICATOR SWITCH
		OS & Y GATE VALVE
		OS & Y GATE VALVE, FLANGED
		CHECK VALVE
		CHECK VALVE, FLANGED
		GATE VALVE
		GLOBE VALVE
	PIV	POST INDICATOR VALVE
	RV	RELIEF VALVE
	FDC	FIRE DEPARTMENT CONNECTION
		PENDANT SPRINKLER
		SIDEWALL SPRINKLER
		GAUGE
		RISER UP
		RISER DOWN
		VALVE IN RISER
		FLOW IN DIRECTION OF ARROW
		AUTOMATIC AIR RELEASE
		PUMP
	ACP	ASBESTOS CEMENT PIPE
	P.O.C.	POINT OF CONNECTION

### SPRINKLER CONTROLS

LIST OF CONTROLS TO BE FURNISHED AND INSTALLED BY SPRINKLER CONTRACTOR AND TO BE WIRED BY ELECTRICAL

ITEM	LOCATION	FUNCTION
<b>COMMISSION CHAMBERS</b>		
A. WATER FLOW INDICATOR SWITCH	ALARM VALVE	A. ACTUATE LOCAL ALARM.
B. ALARM BELL	OUTSIDE AT ALARM VALVE	B. ALERT FACP
C. TAMPER SWITCH	P.I.V. (OUTSIDE BLDG.)	ALERT FACP
<b>TOWER</b>		
A. WATER FLOW INDICATOR SWITCH	STAIRWAY #2 FLRS 1 THRU 10	ALERT FACP
B. TAMPER SWITCH	STAIRWAY #2 FLRS 1 THRU 10	ALERT FACP
C. TAMPER SWITCHES	BOTTOM OF EACH OF TWO DRY STANDPIPES	ALERT FACP
D. TAMPER SWITCHES (MAXIMUM 6)	BASEMENT FIRE PUMP	ALERT FACP
E. FIRE PUMP CONTROLLER	BASEMENT FIRE PUMP	ALERT FACP OF FIRE PUMP RUNNING OR LOSS OF POWER

FACP = FIRE ALARM CONTROL PANEL

### NOTES

SHEETS 16 - 20 ARE FROM THE CITY HALL RETROFIT SPRINKLER DESIGN. THESE DRAWINGS ARE FOR REFERENCE ONLY. CHANGES HAVE BEEN MADE TO THE ORIGINAL SYSTEM OVER THE YEARS. CONTRACTOR IS RESPONSIBLE FOR VERIFYING ALL EXISTING CONDITIONS AND EQUIPMENT.

DEPARTMENT OF PUBLIC WORKS  
ARCHITECTURAL SERVICES

DESIGN BY: [ ]  
SCALE: [ ]  
DATE: 10-95

REVISIONS: [ ]

PROJECT: CITY HALL RENOVATION  
SIXTH FLOOR

SHEET: FIRE SPRINKLER AS-BUILT NOTES & LEGEND

DRAWING NO. 521-237  
16  
20