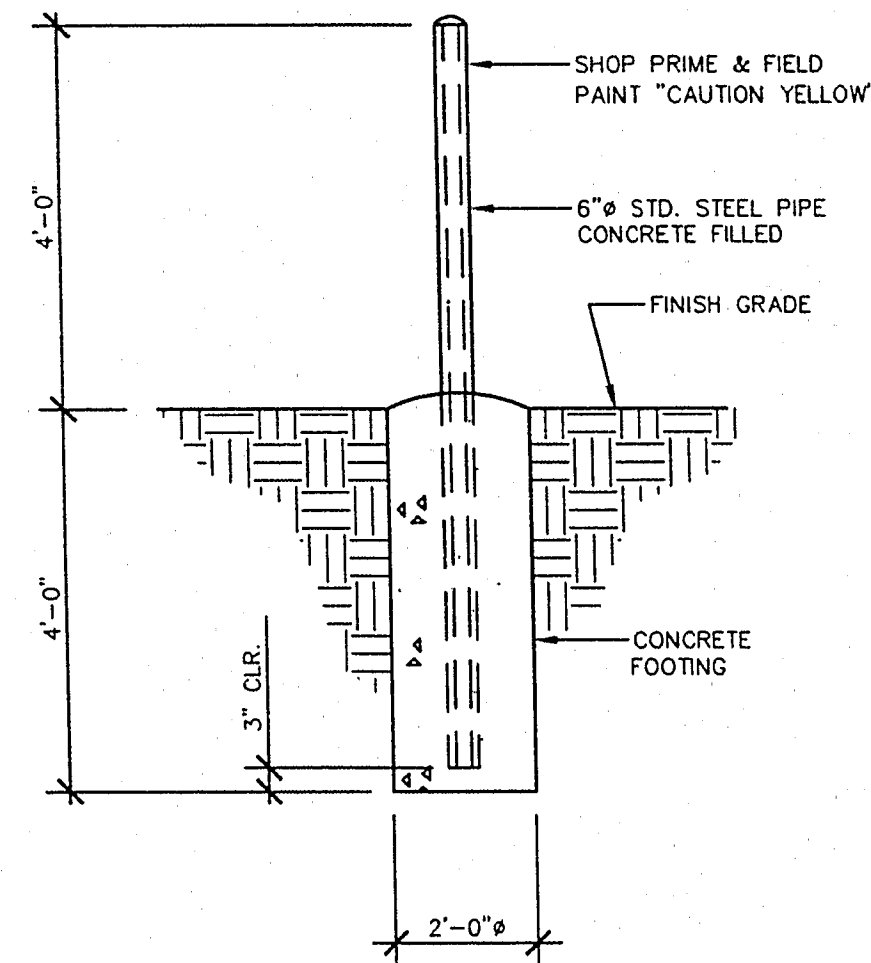


UNLEADED FUEL ISLAND DETAIL

SCALE: 1" = 10'

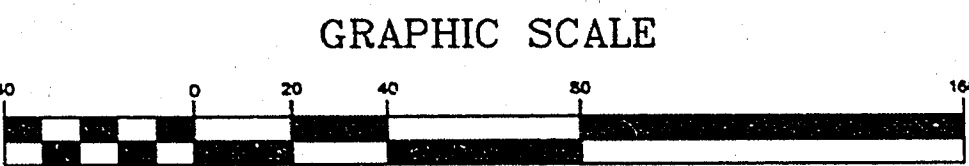
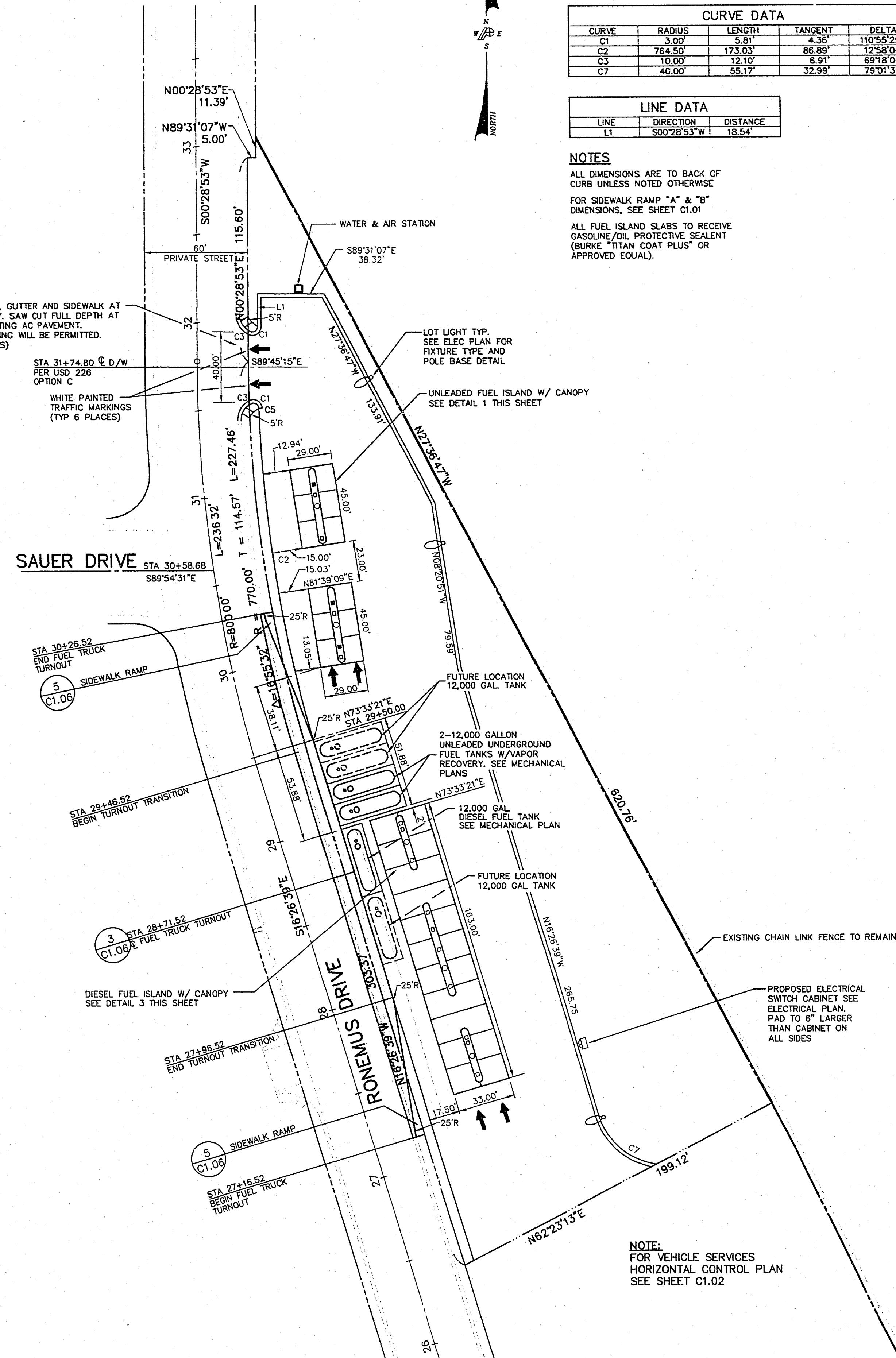
1



PIPE BOLLARD DETAIL

NO SCALE

2



(IN FEET)
1 inch = 40 ft

CURVE DATA

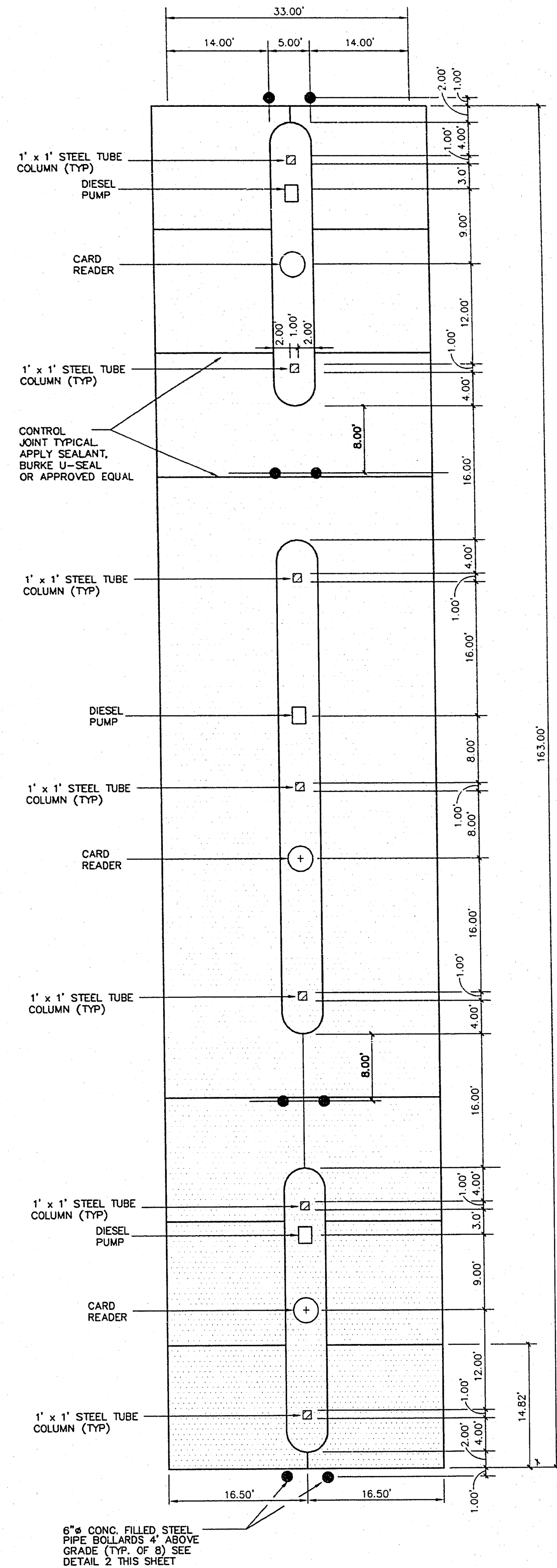
CURVE	RADIUS	LENGTH	TANGENT	DELTA
C1	3.00'	5.81'	4.36'	110°55'29"
C2	764.50'	173.03'	86.89'	12°58'04"
C3	10.00'	12.10'	6.91'	69°18'04"
C7	40.00'	55.17'	32.99'	78°01'39"

LINE DATA

LINE	DIRECTION	DISTANCE
L1	S00°28'53"W	18.54'

NOTES

ALL DIMENSIONS ARE TO BACK OF CURB UNLESS NOTED OTHERWISE
FOR SIDEWALK RAMP "A" & "B" DIMENSIONS, SEE SHEET C1.01
ALL FUEL ISLAND SLABS TO RECEIVE GASOLINE/OIL PROTECTIVE SEALANT (BURKE "TITAN COAT PLUS" OR APPROVED EQUAL).



DIESEL FUEL ISLAND DETAIL

SCALE: 1" = 10'

BASIS OF BEARINGS:
S89°56'51"E - BEING THE SOUTH LINE OF THE S.E. 1/4 OF THE S.W. 1/4 OF SECTION 10, T.20S., R.60E., M.D.B.&M.

BASIS OF ELEVATION:
7000-11C4-DRIVE RIVET IN A 2"x2" ALUMINUM PLATE, IN TOP OF CURB, NORTHWEST CORNER OF GOWAN ROAD AND TORREY PINES DRIVE.
ELEVATION: 2284.34 (NGVD 29). TO CONVERT THE ELEVATIONS SHOWN ON THESE PLANS TO THE NAVD 88 DATUM, ADD 2.33 FEET TO THE ELEVATION IN QUESTION.

NOTE:
CONTRACTOR SHALL LOCATE AND VERIFY ALL EXISTING CONDITIONS PRIOR TO CONSTRUCTION.

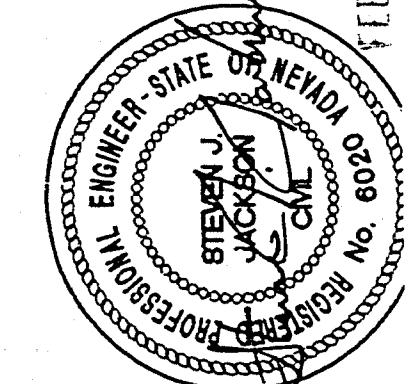
NOTE:
THIS DRAWING PREPARED UNDER A SEPARATE CONTRACT BY POGEMEYER DESIGN GROUP AND IS INCLUDED HERE AS A PART OF THIS BID PACKAGE.

Call before you Dig.
1-800-227-2600

522-1157

TATE & SNYDER ARCHITECTS

709 Valle Verde Court
Henderson, Nevada 89014
Tel. 702 . 456 . 3000
Fax. 702 . 898 . 6209



THESE DRAWINGS AND ANY INFORMATION CONTAINED HEREIN ARE THE PROPERTY OF TATE & SNYDER ARCHITECTS AND SHALL NOT BE REPRODUCED OR USED FOR ANY OTHER PROJECT WITHOUT THE WRITTEN CONSENT OF TATE & SNYDER ARCHITECTS. THESE DRAWINGS ARE NOT TO BE USED FOR FINAL AND READY FOR CONSTRUCTION UNLESS THEY ARE SCALED, SIGNED AND SEALED.

Consultant
POGEMEYER DESIGN GROUP
ENGINEERS PLANNERS ARCHITECTS
200 HARRY THAYER WAY LAS VEGAS, NEVADA 89102 (702) 255-8100

Sheet Title
HORIZONTAL CONTROL PLAN-VEHICLE FUELING

Project
**CITY OF LAS VEGAS
WEST VEHICLE SERVICE CENTER**

Revisions

Date:
02.05.96

Sheet No.

C1.04
SHEET 5 OF 7