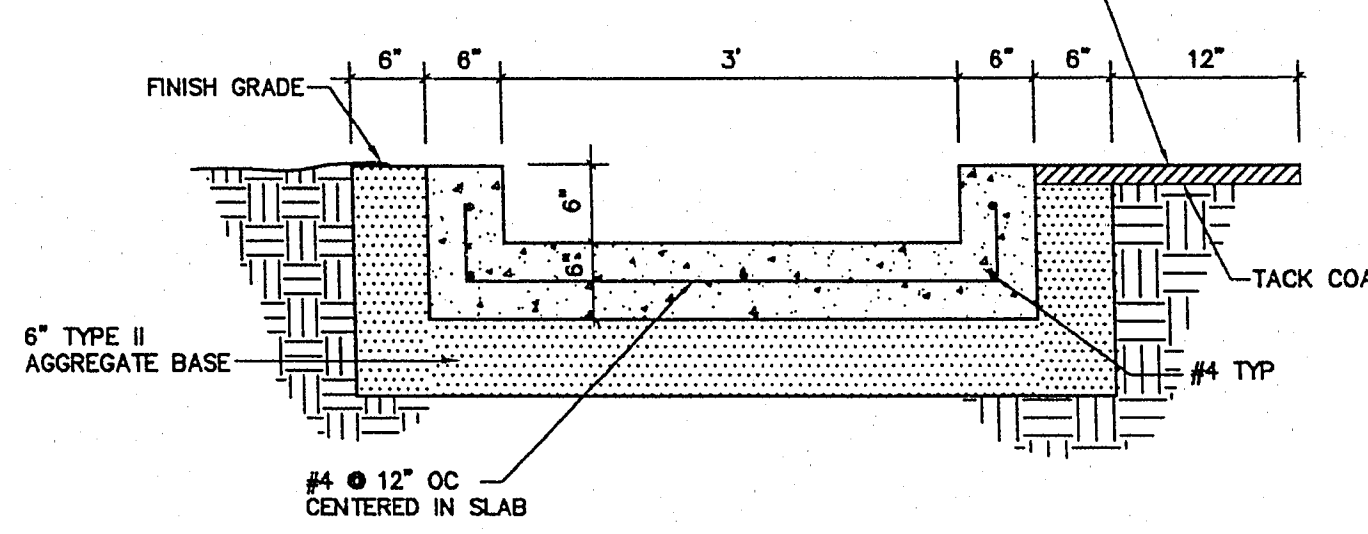
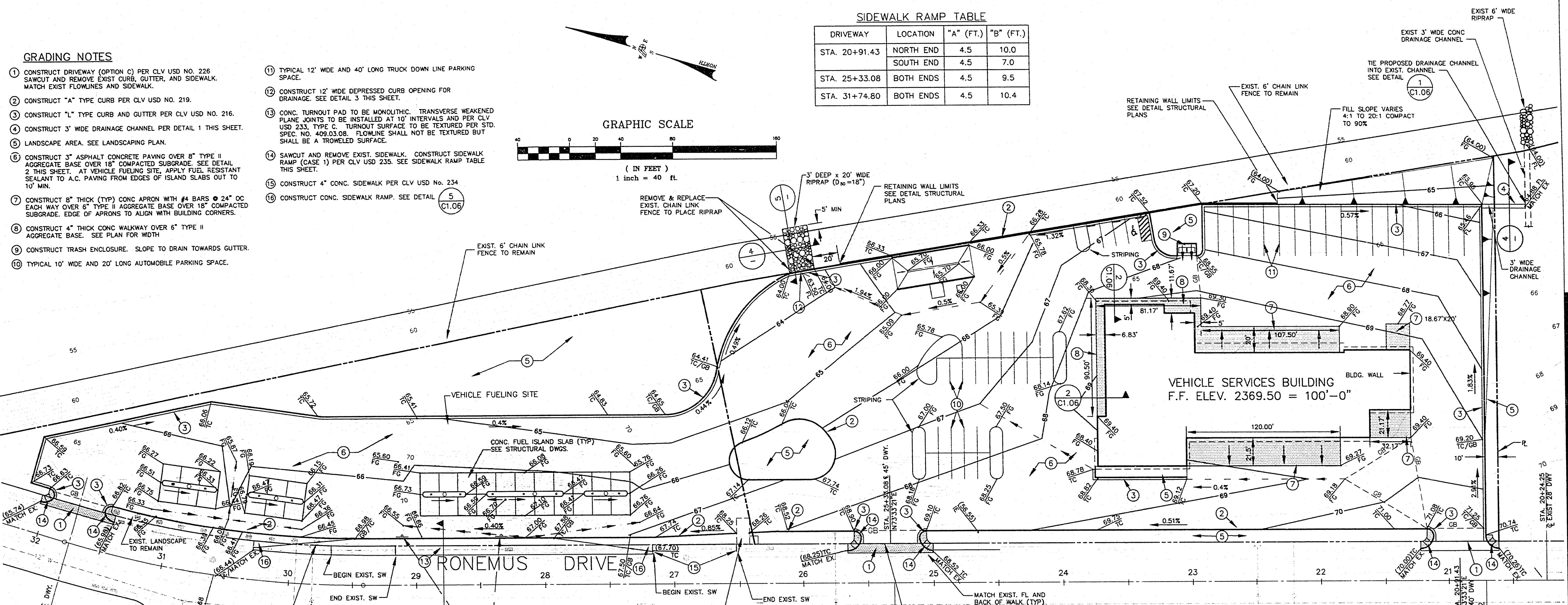
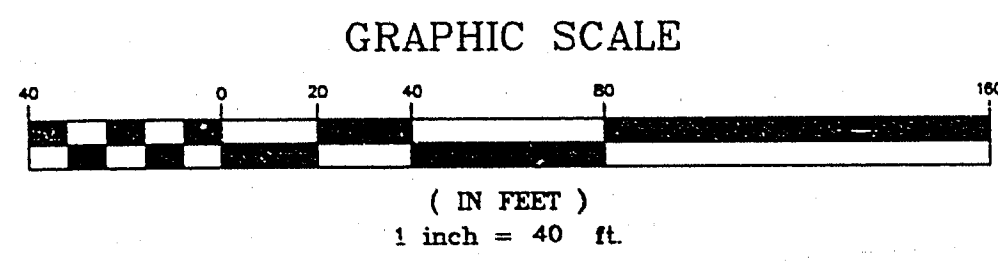


GRADING NOTES

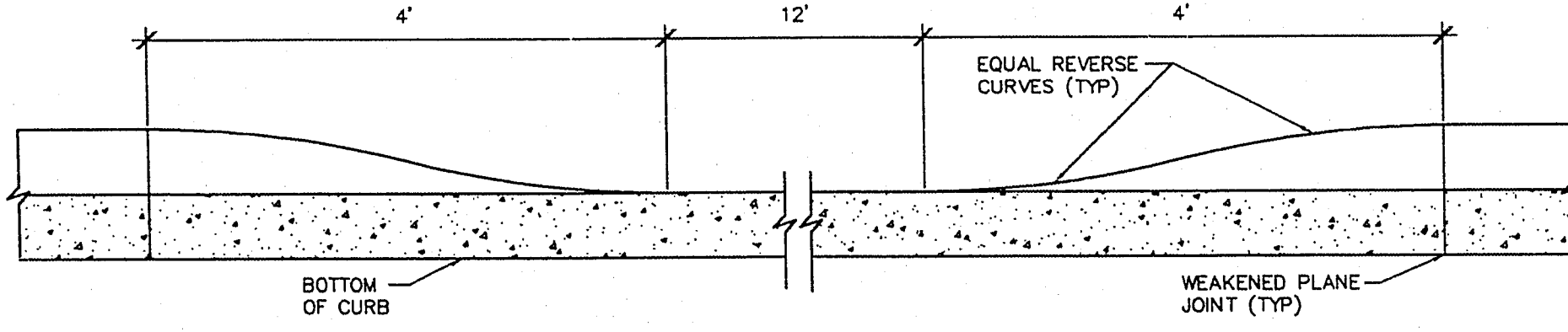
- 1 CONSTRUCT DRIVEWAY (OPTION C) PER CLV USD NO. 226. SAWCUT AND REMOVE EXIST. CURB, GUTTER, AND SIDEWALK. MATCH EXIST. FLOWLINES AND SIDEWALK.
- 2 CONSTRUCT "A" TYPE CURB PER CLV USD NO. 219.
- 3 CONSTRUCT "L" TYPE CURB AND GUTTER PER CLV USD NO. 216.
- 4 CONSTRUCT 3" WIDE DRAINAGE CHANNEL PER DETAIL 1 THIS SHEET.
- 5 LANDSCAPE AREA. SEE LANDSCAPING PLAN.
- 6 CONSTRUCT 3" ASPHALT CONCRETE PAVING OVER 8" TYPE II AGGREGATE BASE OVER 18" COMPACTED SUBGRADE. SEE DETAIL 2 THIS SHEET. AT VEHICLE FUELING SITE, APPLY FUEL RESISTANT SEALANT TO A.C. PAVING FROM EDGES OF ISLAND SLABS OUT TO 10' MIN.
- 7 CONSTRUCT 8" THICK (TYP) CONC. APRON WITH #4 BARS @ 24" OC EACH WAY OVER 6" TYPE II AGGREGATE BASE OVER 18" COMPACTED SUBGRADE. EDGE OF APRONS TO ALIGN WITH BUILDING CORNERS.
- 8 CONSTRUCT 4" THICK CONC. WALKWAY OVER 6" TYPE II AGGREGATE BASE. SEE PLAN FOR WIDTH.
- 9 CONSTRUCT TRASH ENCLOSURE. SLOPE TO DRAIN TOWARDS GUTTER.
- 10 TYPICAL 10' WIDE AND 20' LONG AUTOMOBILE PARKING SPACE.
- 11 TYPICAL 12' WIDE AND 40' LONG TRUCK DOWN LINE PARKING SPACE.
- 12 CONSTRUCT 12" WIDE DEPRESSED CURB OPENING FOR DRAINAGE. SEE DETAIL 3 THIS SHEET.
- 13 CONC. TURNOUT PAD TO BE MONOLITHIC. TRANSVERSE WEAKENED PLANE JOINTS TO BE INSTALLED AT 10' INTERVALS AND PER CLV USD 233, TYPE C. TURNOUT SURFACE TO BE TEXTURED BUT SPEC. NO. 409.03.08. FLOWLINE SHALL NOT BE TEXTURED BUT SHALL BE A TROWELED SURFACE.
- 14 SAWCUT AND REMOVE EXIST. SIDEWALK. CONSTRUCT SIDEWALK RAMP (CASE 1) PER CLV USD 235. SEE SIDEWALK RAMP TABLE THIS SHEET.
- 15 CONSTRUCT 4" CONC. SIDEWALK PER CLV USD NO. 234.
- 16 CONSTRUCT CONC. SIDEWALK RAMP. SEE DETAIL 5 (C1.06).

SIDEWALK RAMP TABLE

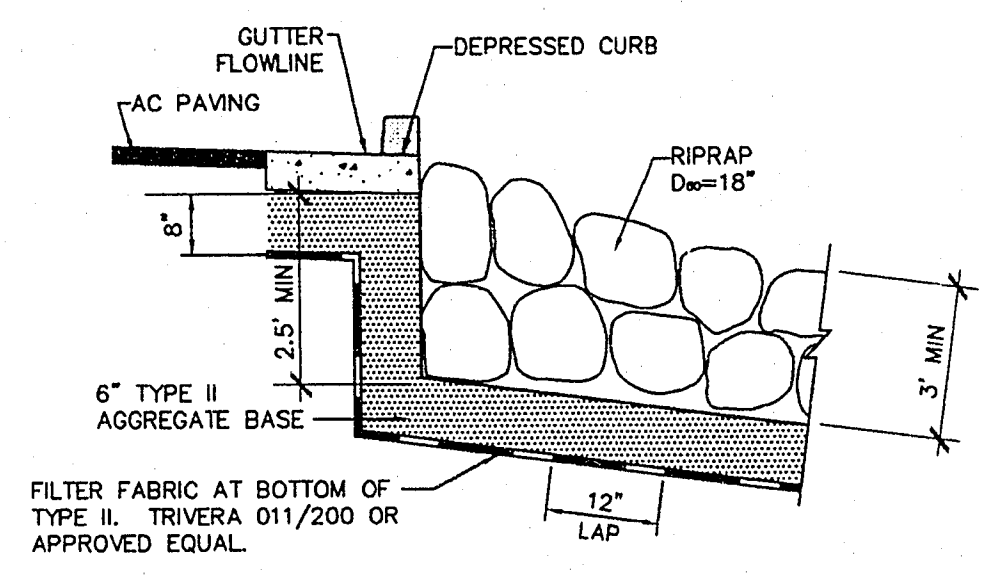
DRIVEWAY	LOCATION	"A" (FT.)	"B" (FT.)
STA. 20+91.43	NORTH END	4.5	10.0
	SOUTH END	4.5	7.0
STA. 25+33.08	BOTH ENDS	4.5	9.5
STA. 31+74.80	BOTH ENDS	4.5	10.4



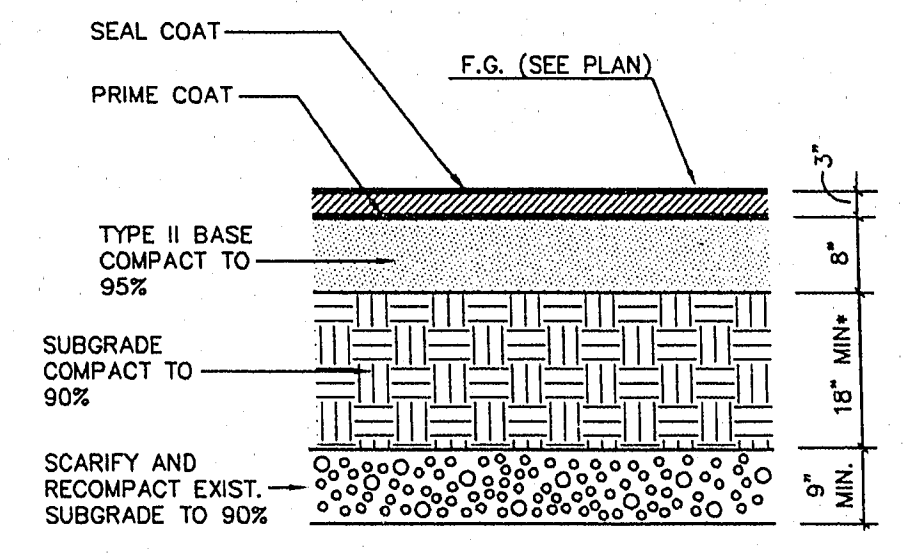
DRAINAGE CHANNEL
NO SCALE



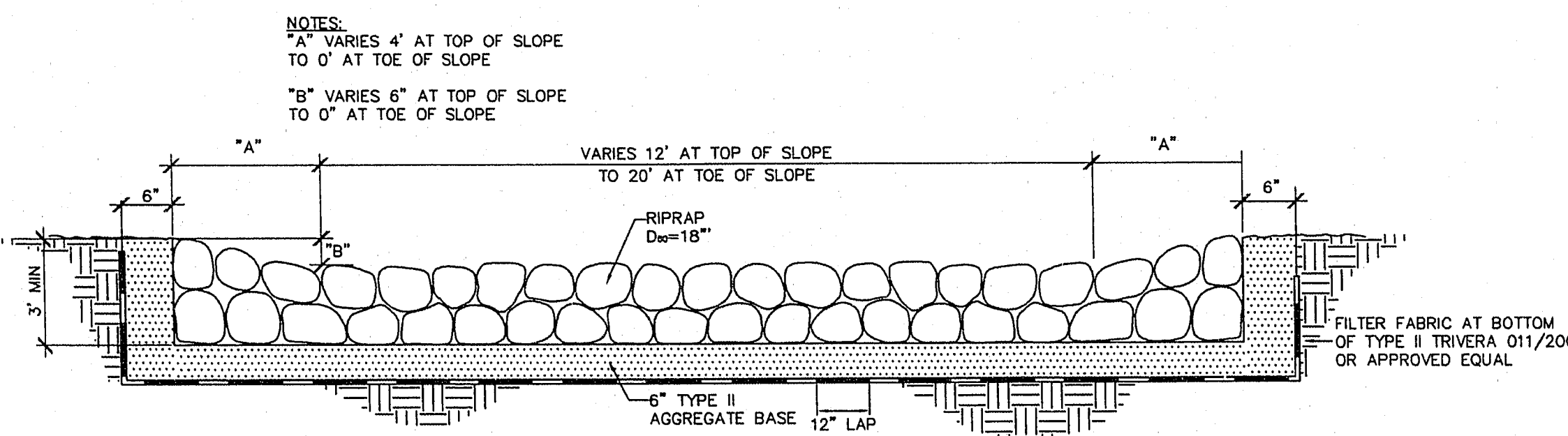
DEPRESSED CURB OPENING
NO SCALE



SECTION
NO SCALE



TYPICAL PAVEMENT SECTION
NO SCALE



RIPRAP BLANKET SECTION
NO SCALE

BASIS OF BEARINGS
589°56'51"E - BEING THE SOUTH LINE OF THE SE 1/4 OF THE SW 1/4 OF SECTION 10, T20S, R60E, M.D.B. & M.

BASIS OF ELEVATION
7000-1104-DRIVE RIVET IN A 2"x2" ALUMINUM PLATE, IN TOP OF CURB, NORTHWEST CORNER OF GOWAN ROAD AND TORREY PINES DRIVE.
ELEVATION: 2284.34 (NGVD 29). TO CONVERT ELEVATIONS SHOWN ON THESE PLANS TO THE NAVD 88 DATUM, ADD 2.33 FEET TO THE ELEVATION IN QUESTION.

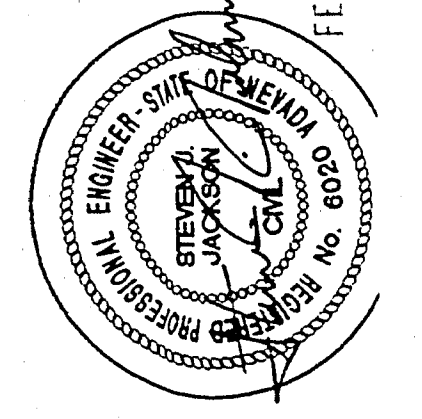
NOTE
CONTRACTOR SHALL LOCATE AND VERIFY ALL EXISTING CONDITIONS PRIOR TO CONSTRUCTION.

I CERTIFY THAT THIS GRADING PLAN CONFORMS TO THE APPROVED DRAINAGE STUDY ON FILE AT THE CITY OF LAS VEGAS.

Steven J. Jackson
STEVEN J. JACKSON, PE No. 6020

TATE & SNYDER ARCHITECTS

709 Valle Verde Court
Henderson, Nevada 89014
Tel. 702.456.3000
Fax. 702.898.6209



THESE DRAWINGS AND SPECIFICATIONS ARE THE PROPERTY OF TATE & SNYDER ARCHITECTS AND SHALL NOT BE REPRODUCED OR TRANSMITTED IN ANY FORM OR BY ANY MEANS, ELECTRONIC OR MECHANICAL, INCLUDING PHOTOCOPYING, RECORDING, OR BY ANY INFORMATION STORAGE AND RETRIEVAL SYSTEM, WITHOUT THE WRITTEN PERMISSION OF TATE & SNYDER ARCHITECTS.

Consultant
POGEMEYER DESIGN GROUP
ENGINEERS PLANNERS SURVEYORS
2801 NORTH TOWNA WAY, LAS VEGAS, NEVADA 89129 (702) 335-8100

Sheet Title
GRADING PLAN
Project
**CITY OF LAS VEGAS
WEST VEHICLE SERVICE CENTER**

Revisions

Date: 02.05.96

Sheet No.

C1.01
SHEET 2 OF 7

522-1/57