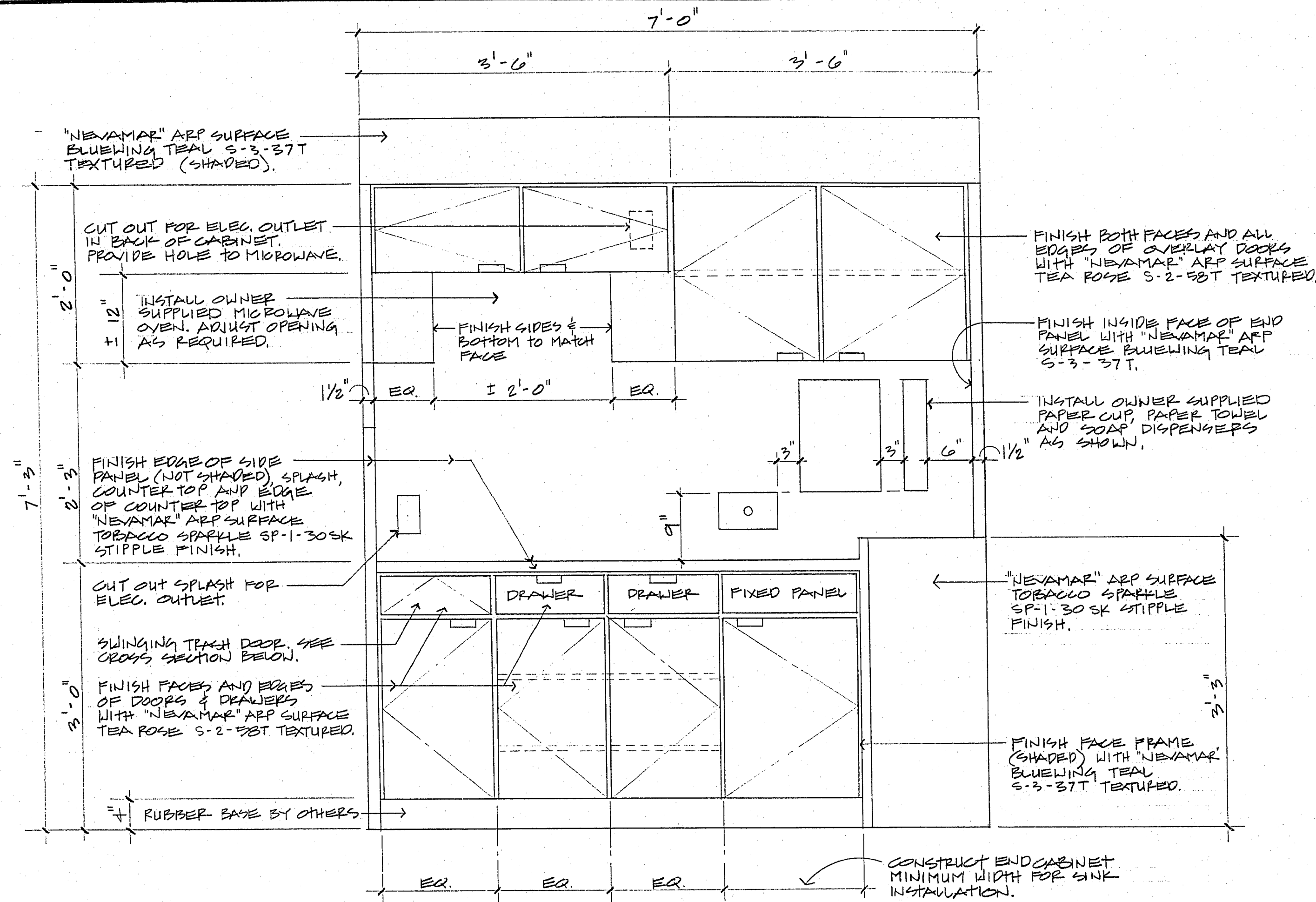
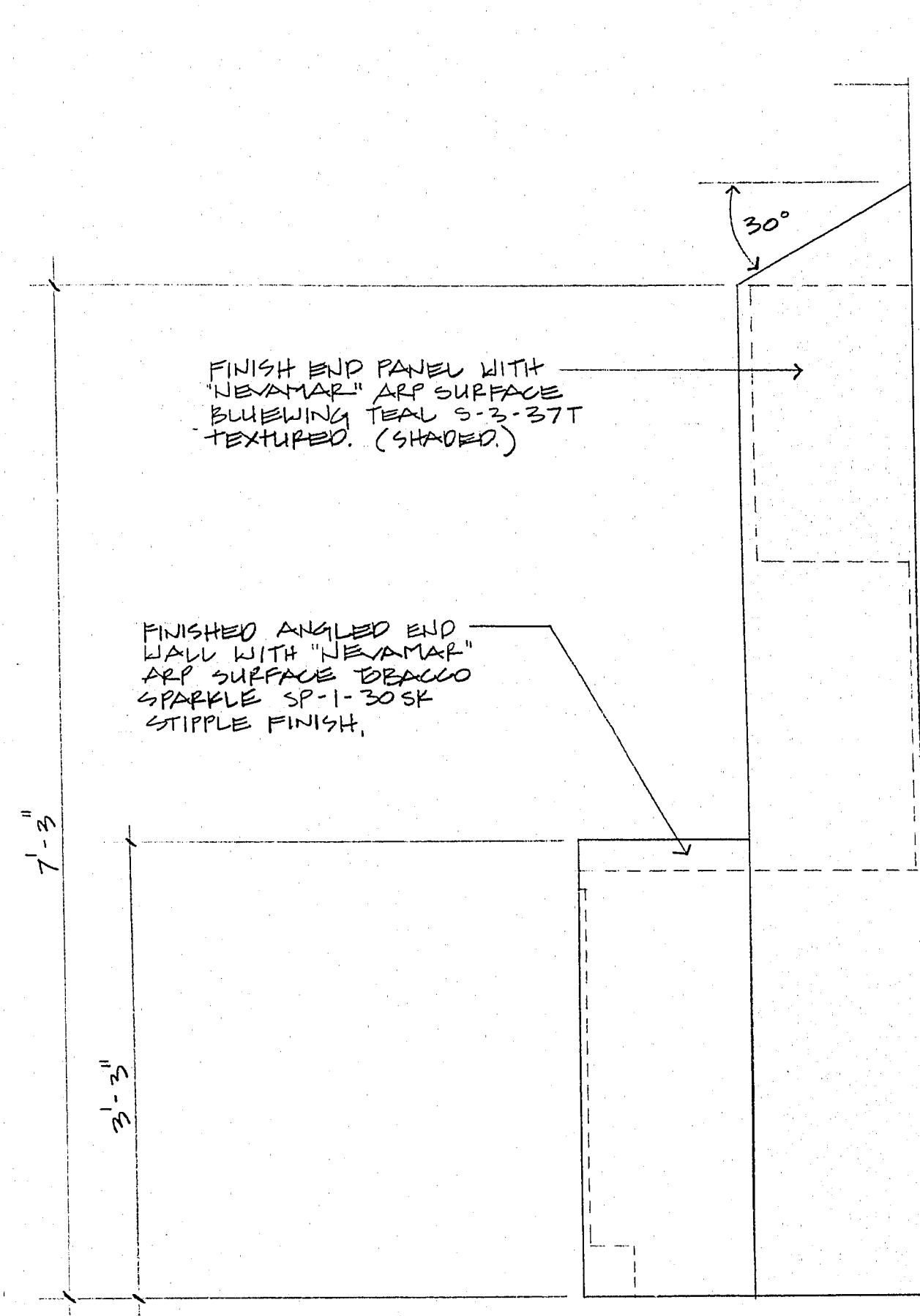


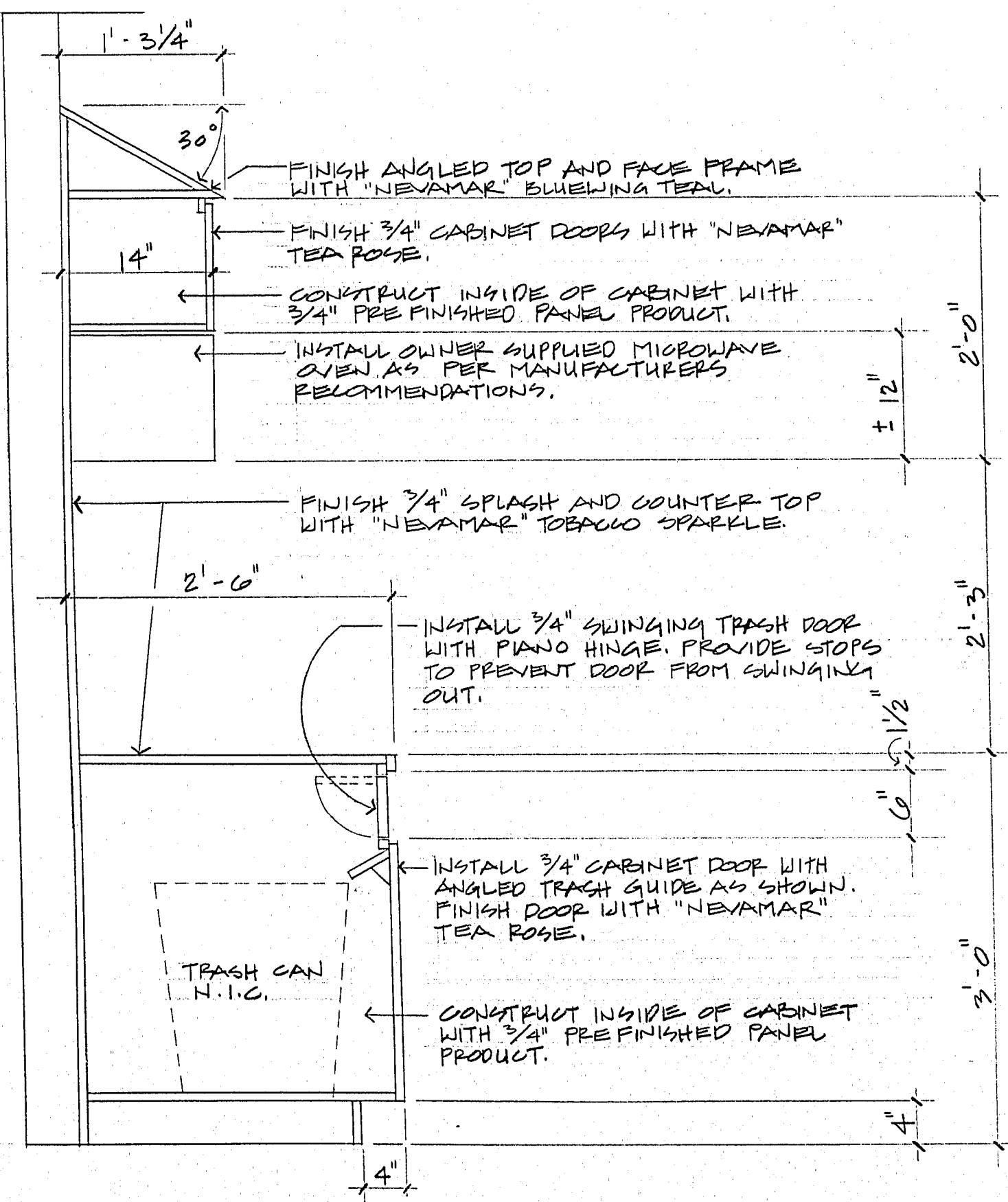
ELEVATION "A"
1" = 1'-0"



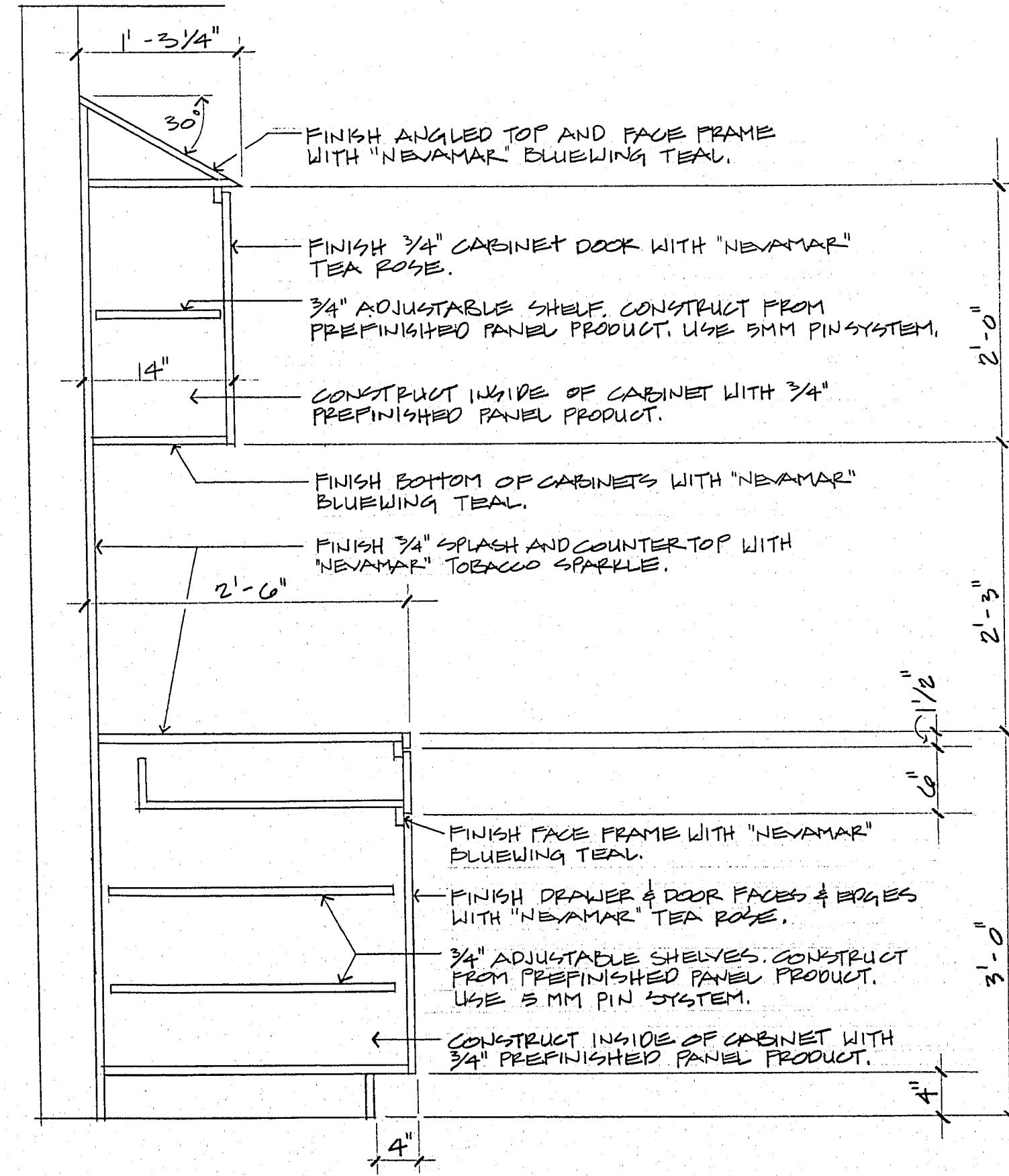
ELEVATION "B"
1" = 1'-0"



ELEVATION "C"
1" = 1'-0"



CROSS SECTION "D"
1" = 1'-0"

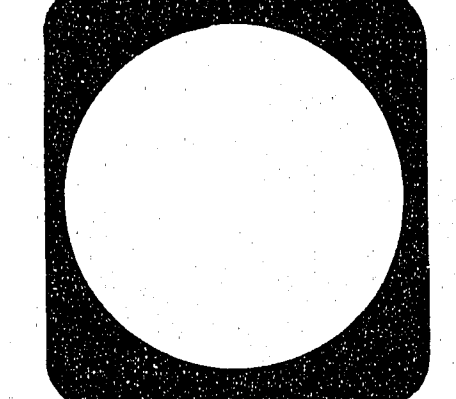


CROSS SECTION "E"
1" = 1'-0"



City of Las Vegas, Nevada
Department of Design and Development
 Thomas B. Graham, AICP, RLA, Director
 Interior Design Division
 DESIGN BY: SCALE: AS SHOWN
 DRAWN BY: F. TRUPIANO DATE: 8-91

REVISIONS	DATE



CITY HALL - THIRD FLOOR RENOVATION
 ELEVATIONS AND SECTIONS

PROJECT NO.
 DRAWING NO. 521-216B
 SHEET 11 OF 11