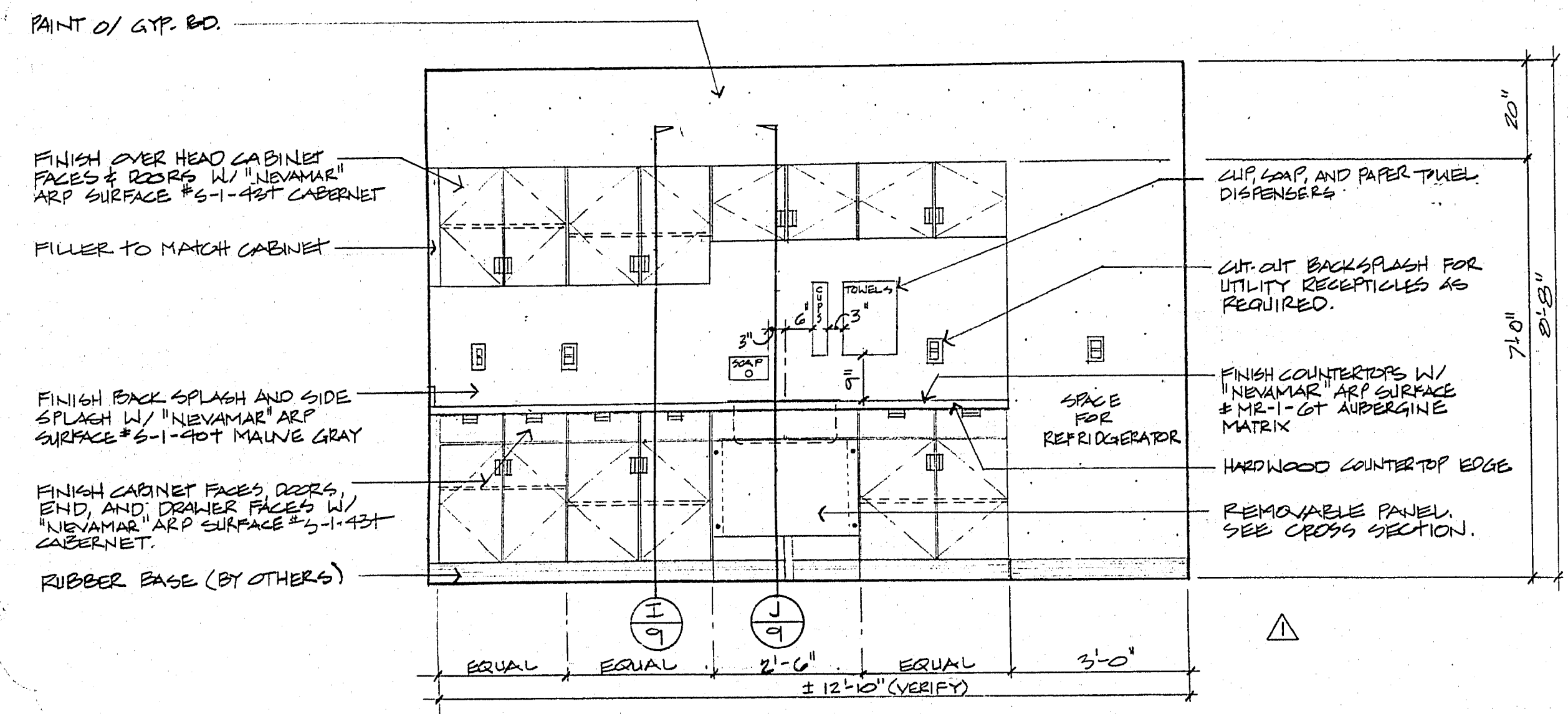


City of Las Vegas, Nevada
Department of Design and Development
 Thomas B. Graham, AICP, RLA, Director
 INTERIOR DESIGN DIVISION
 SCALE: AS SHOWN
 DATE: 2/92
 DESIGN BY: R. RUEGG
 DRAWN BY: J. JACOMB

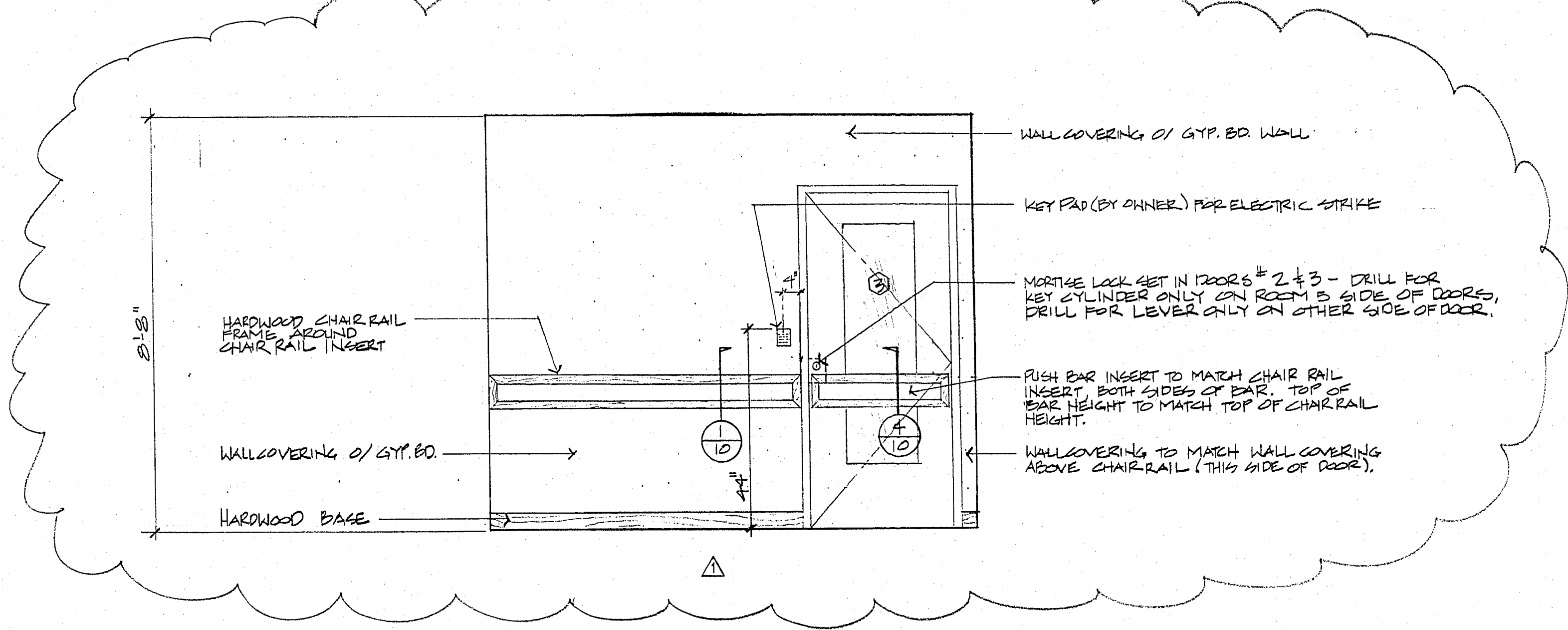
REVISIONS	DATE
△ ELEVATIONS A, B, C	7/92

CITY HALL NINTH FLOOR RENOVATION
ELEVATIONS

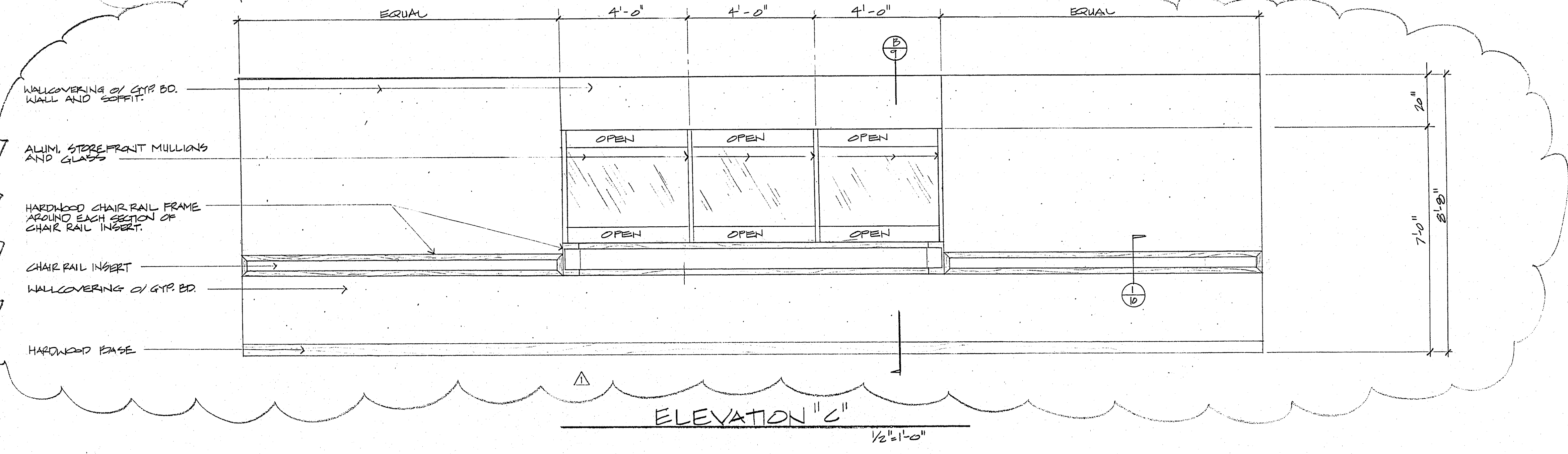
PROJECT NO.
 DRAWING NO. 521-219A
 SHEET 8 OF 12



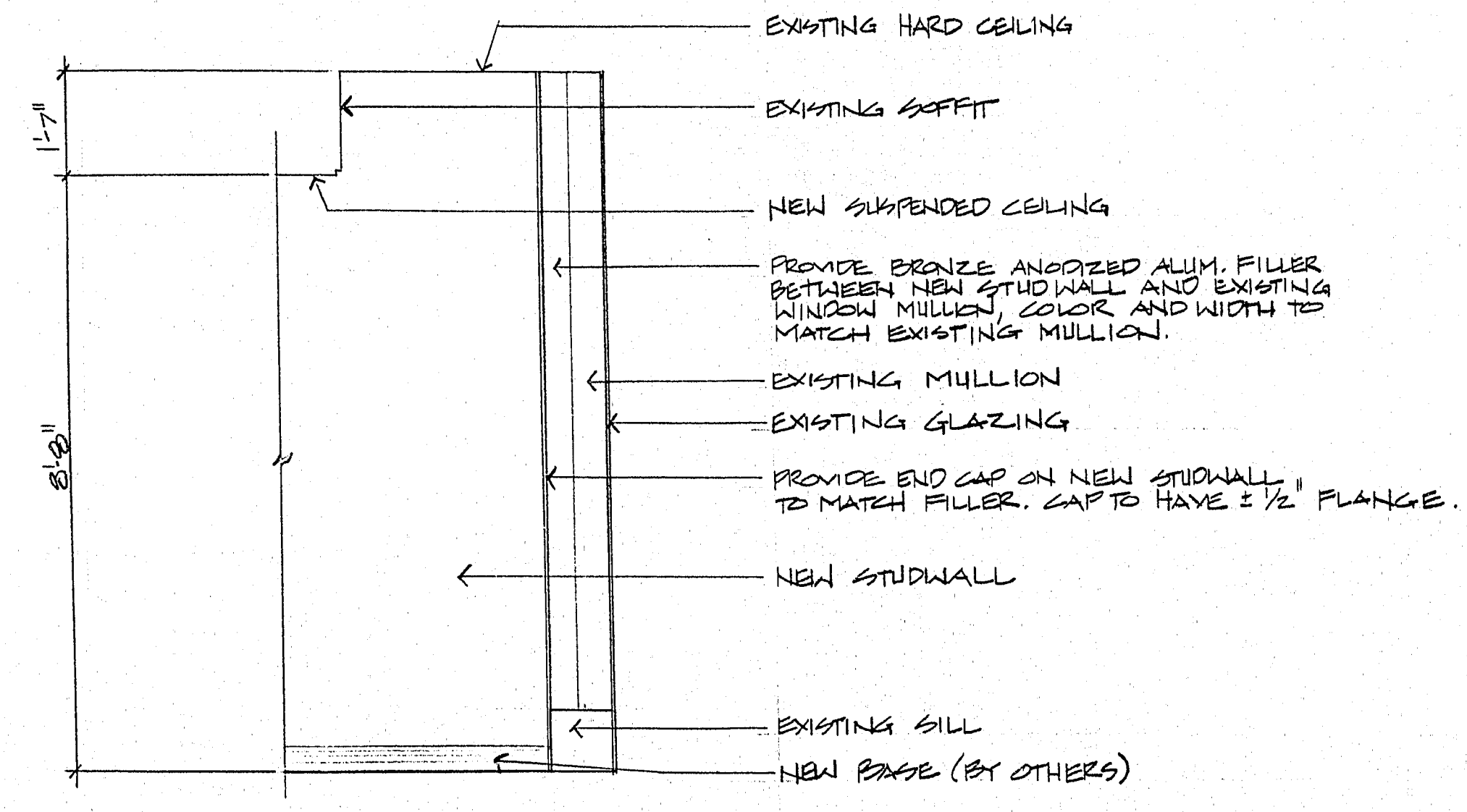
ELEVATION "A"
 1/2" = 1'-0"



ELEVATION "B"
 1/2" = 1'-0"



ELEVATION "C"
 1/2" = 1'-0"



ELEVATION "D"
 1/2" = 1'-0"

TYP. AT STUDWALL/GLASS WALL JUNCTION