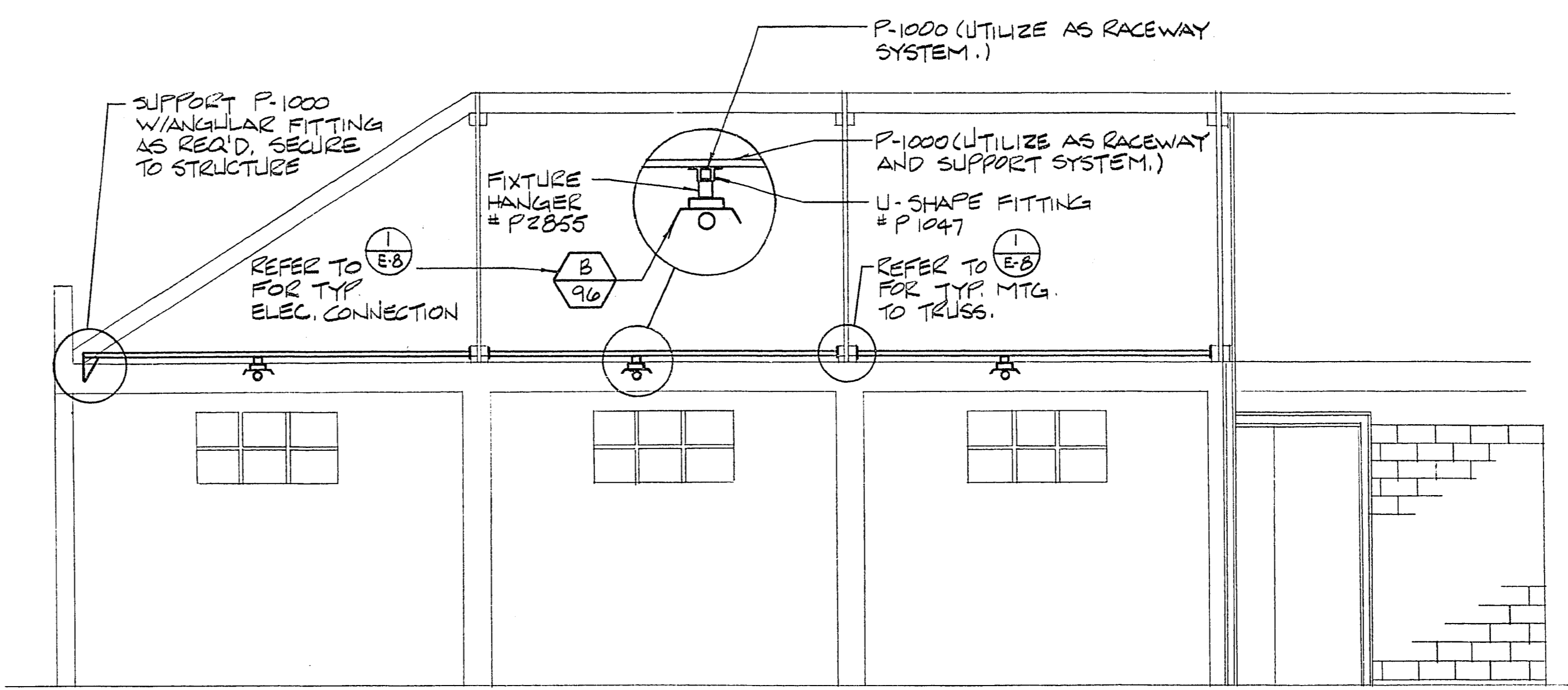
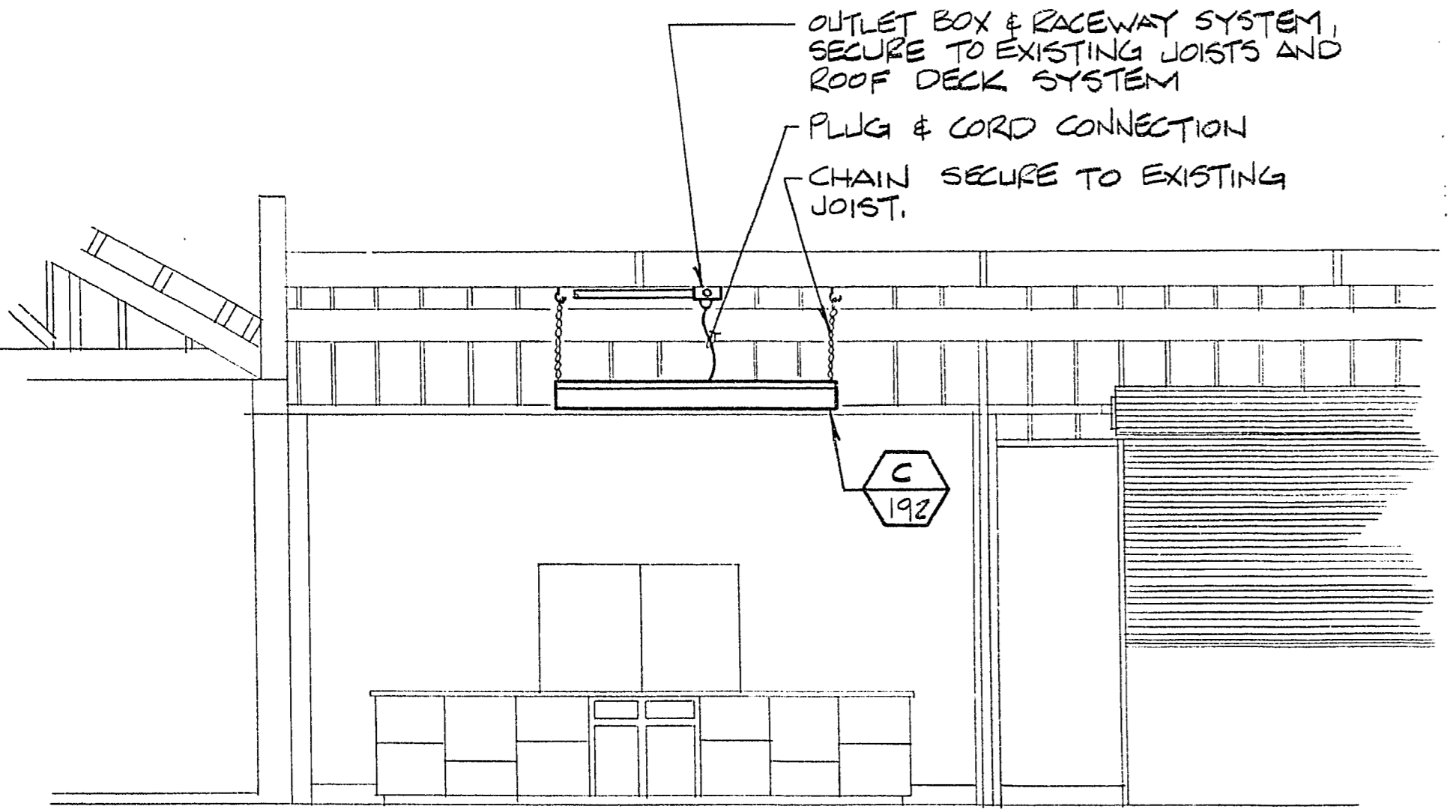


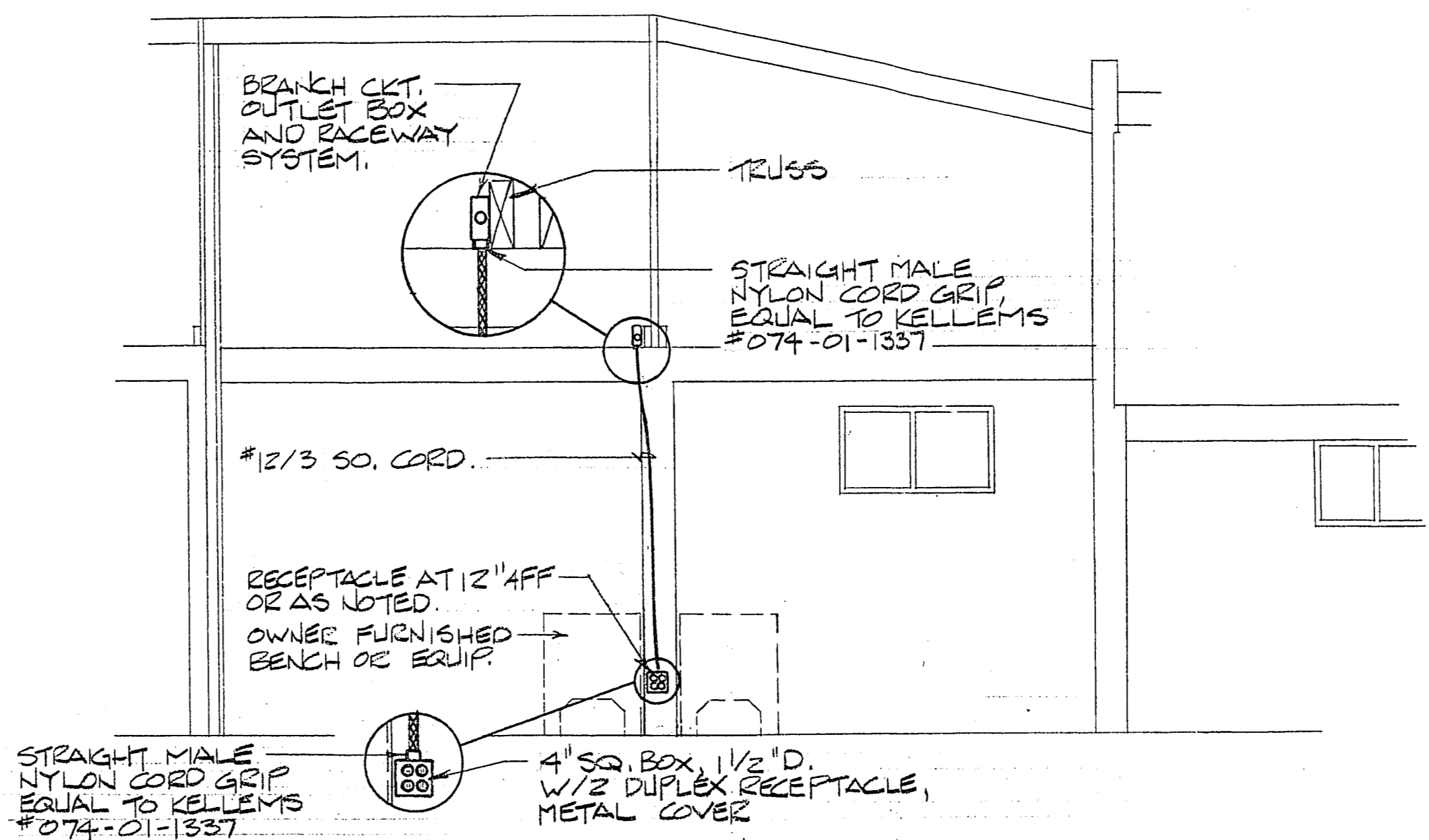
1  
E-B  
**FIXTURE SUPPORT DETAIL**  
 N.T.S.



2  
E-B  
**FIXTURE SUPPORT DETAIL**  
 N.T.S.



3  
E-B  
**FIXTURE SUPPORT DETAIL**  
 N.T.S.



4  
E-B  
**CONDUIT SUPPORT DETAIL**  
 N.T.S.

DESIGN		P.J. HYLE	
DRAWN		S.F. TOTTEN	
CHECK		P.J. HYLE	
DATE			
ELECTRICAL AND MECHANICAL ENGINEERS NEVADA CALIFORNIA BRITISH COLUMBIA ARIZONA <b>DINTER ENGINEERING CO. LTD.</b> CONSULTING ENGINEERS A PROFESSIONAL CORPORATION 955 WILLOW ST. SUITE 200 LAS VEGAS, NEVADA 89108 702 389-0608 702 389-3198			
<b>BUILDING REMODEL AT                  300 LAS VEGAS BLVD. N.                  LAS VEGAS, NEVADA</b>			
ELECTRICAL - DETAILS			
JOB NO.			
CONSEC. SHT. 45 OF 46			
SHEET NO. OF			
PROFESSIONAL ENGINEER PETER J. HYLE NEVADA No. 5511 11-15-85			

