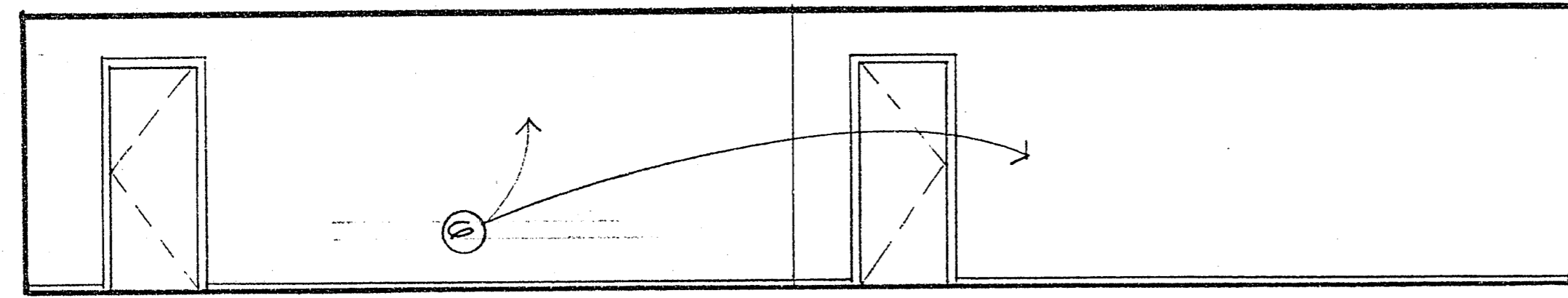
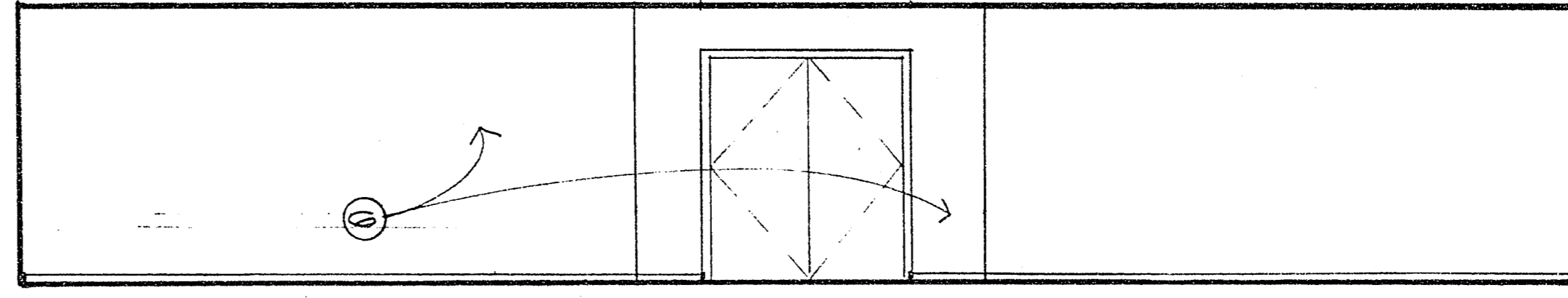


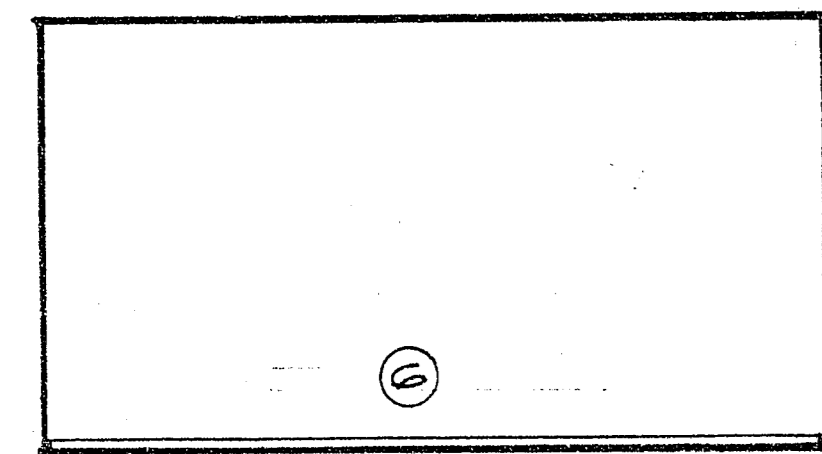
FOYER 214 (19)



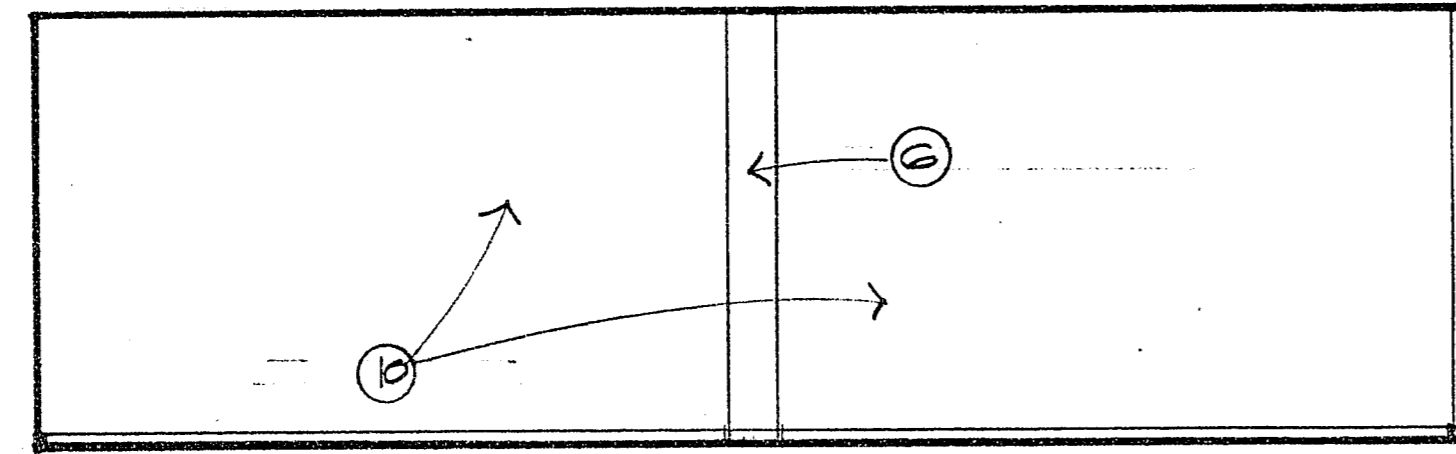
FOYER 214 (20)



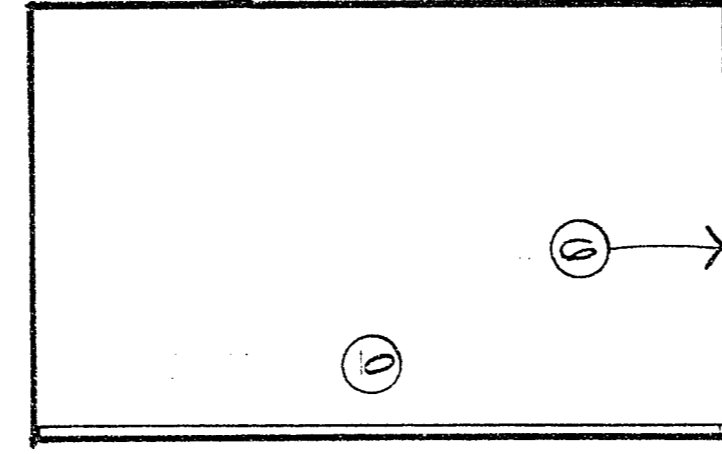
FOYER 214 (21)



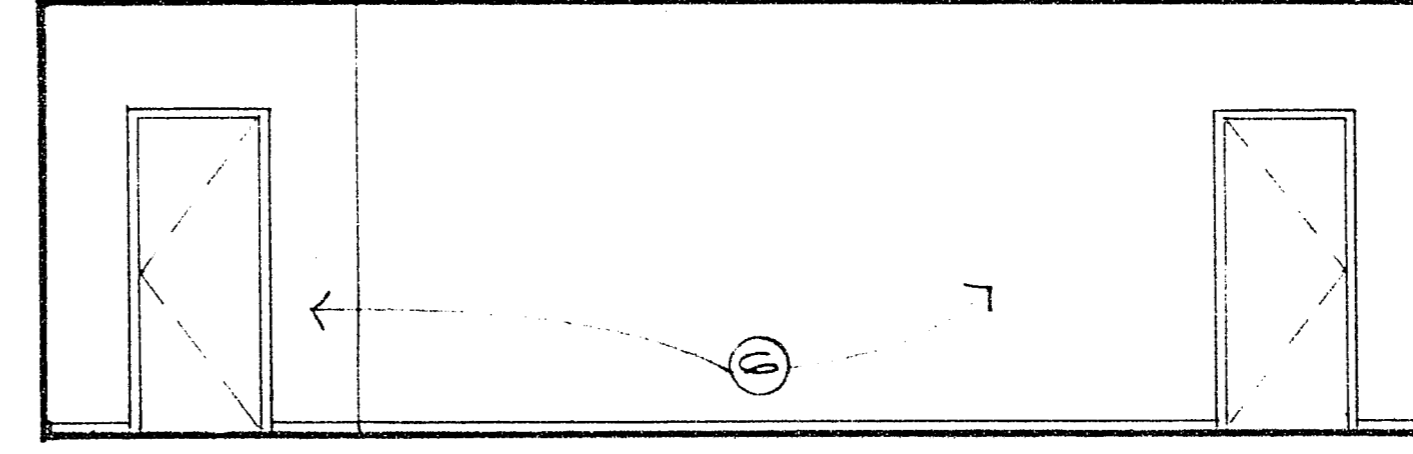
CLASSROOM 215 (22)



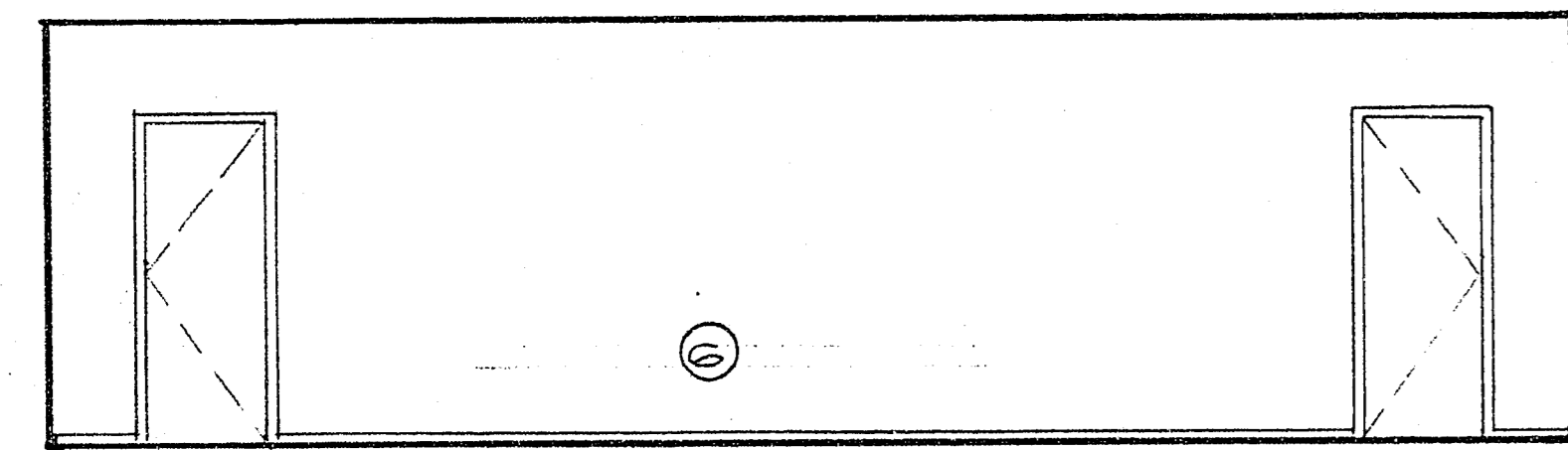
CLASSROOM 215 (23)



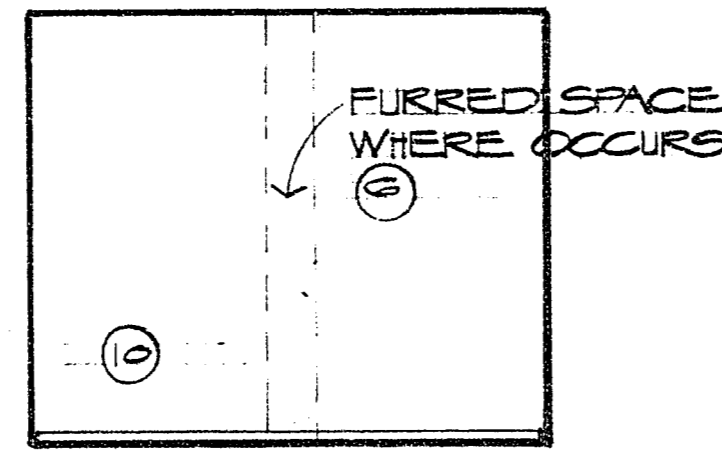
CLASSROOM 215 (24)



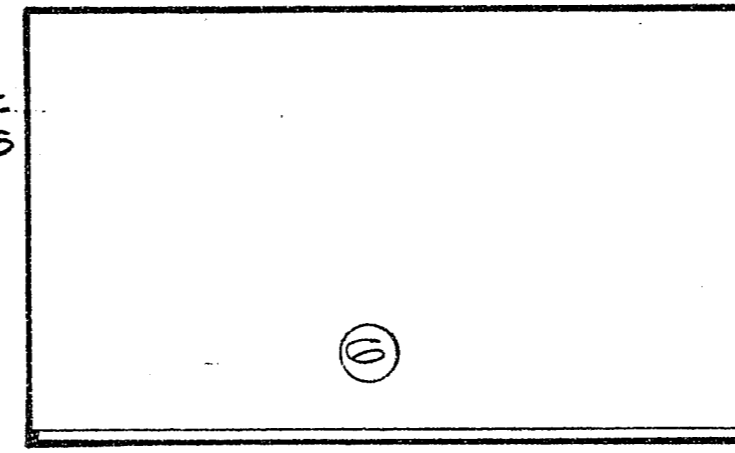
CLASSROOM 215 (25)



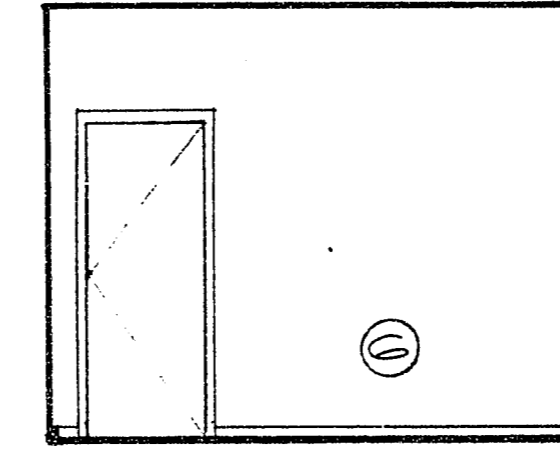
CLASSROOM 216 (26)



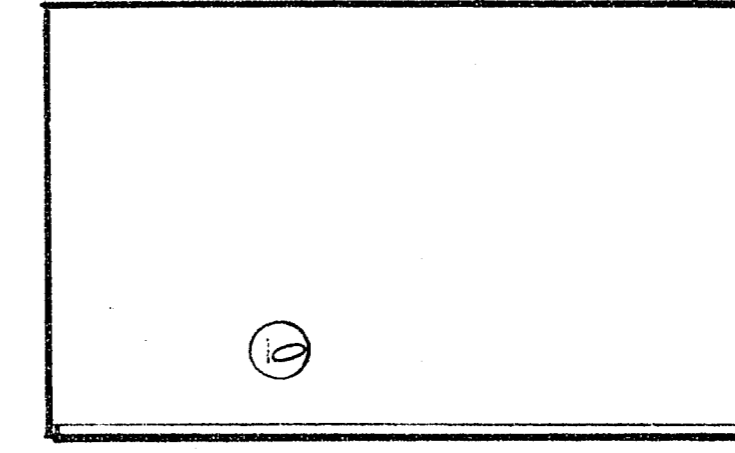
OFFICE 217 (27)



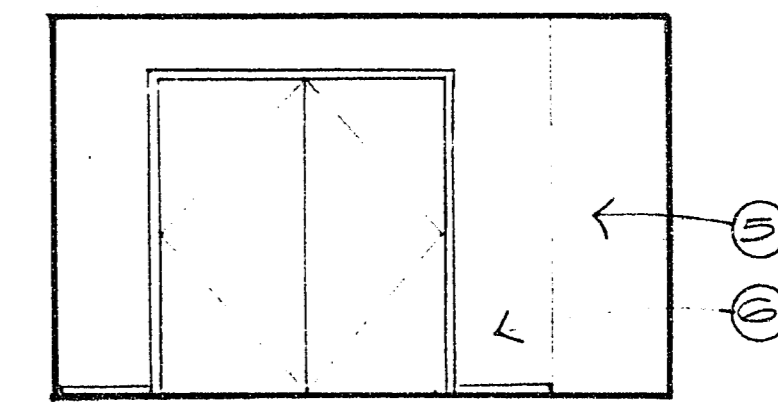
OFFICE 217 (28)



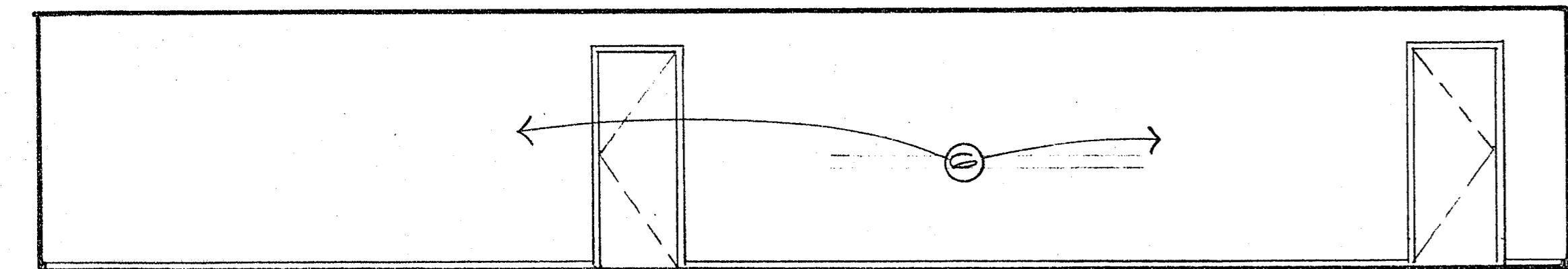
OFFICE 217 (29)



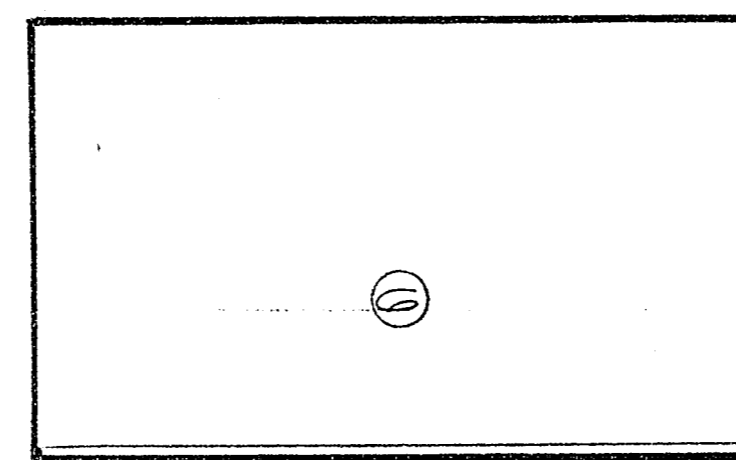
OFFICE 217 (30)



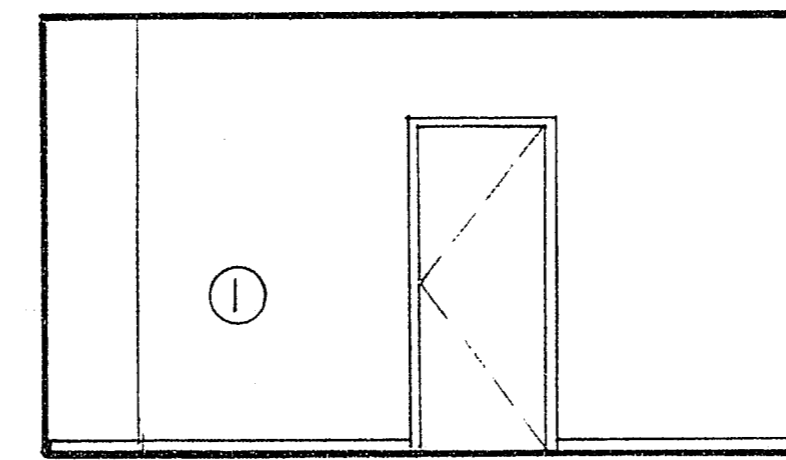
CORRIDOR 220 (31)



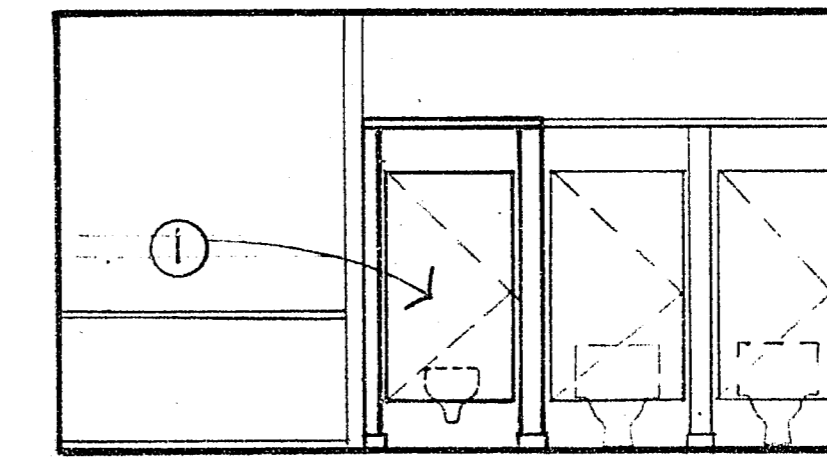
CORRIDOR 220 (32)



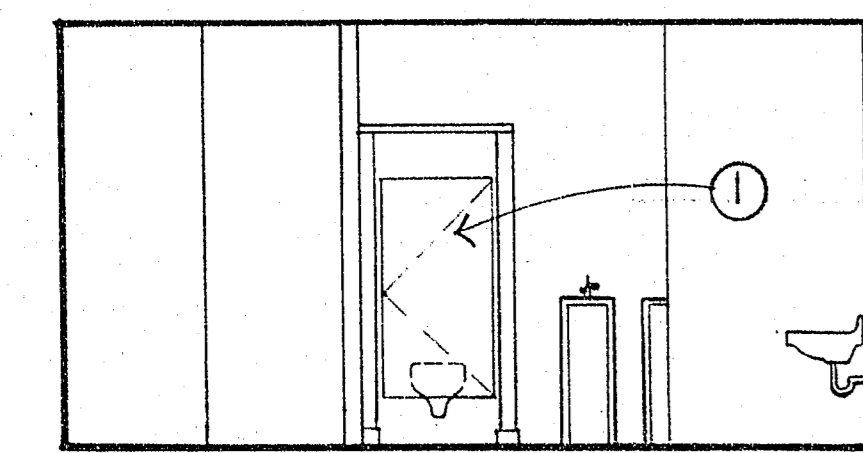
KITCHEN 221 (33)



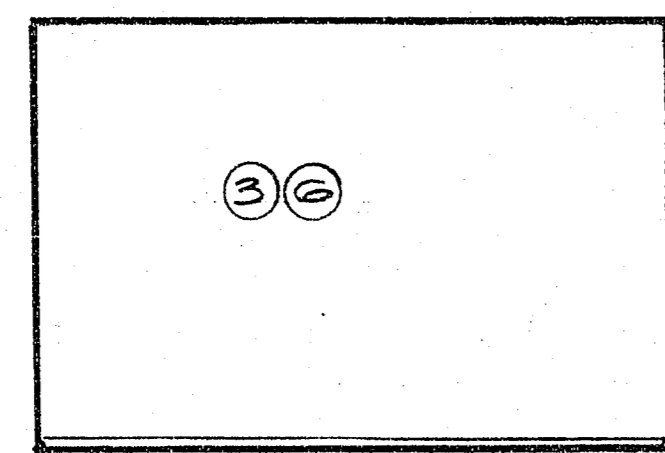
OFFICE 222 (34)



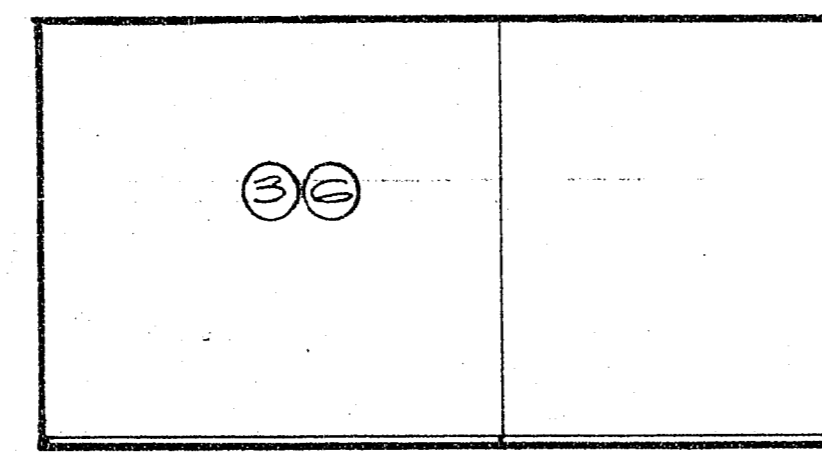
WOMENS 224 (35)



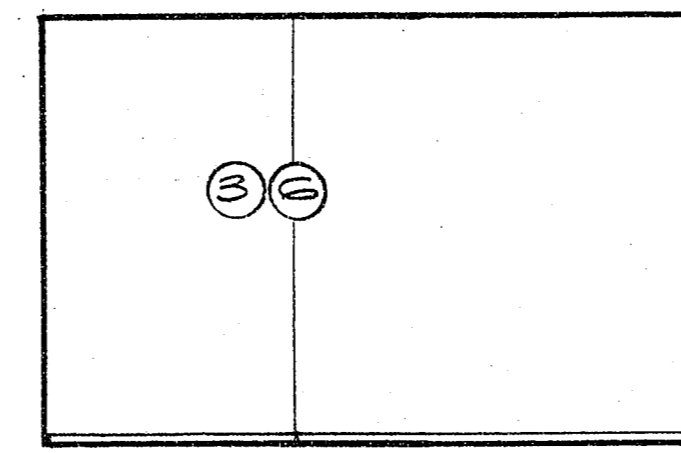
MEN 226 (36)



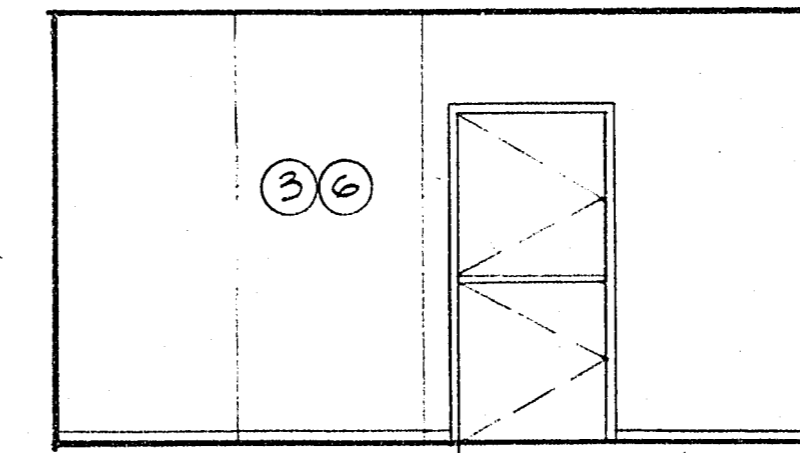
BOX OFFICE 227 (37)



BOX OFFICE 227 (38)



BOX OFFICE 227 (39)



BOX OFFICE 227 (40)

NOTES

SCALE: 1/4" = 1'-0" UNLESS OTHERWISE NOTED
FOR INTERIOR ELEVATION NOTES SEE
FINISH SCHEDULE SHEET A-9

DATE: MARCH 78
DRAWN: CA DB
CHECKED: TFD
JOB NO.: 77-35

THOMAS A. DOBRUSKY
ARCHITECT AIA
211 MANLAND PARKWAY LAS VEGAS, NEVADA 89101 (702) 385-5747

CULTURAL SERVICES COMPLEX
REED WHIPPLE • LAS VEGAS, NEVADA

DATE: 1/28/80
A-11
OR 31
FILE NUMBER
2-26

513-418