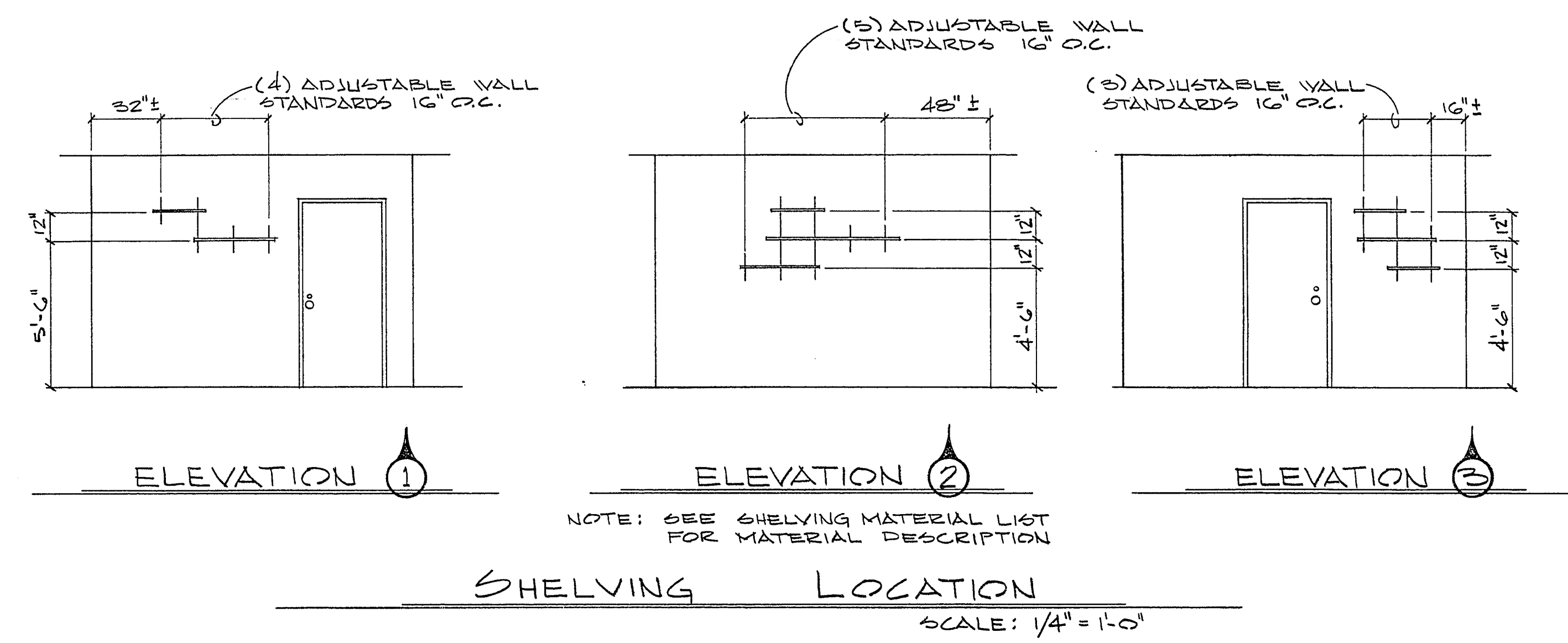
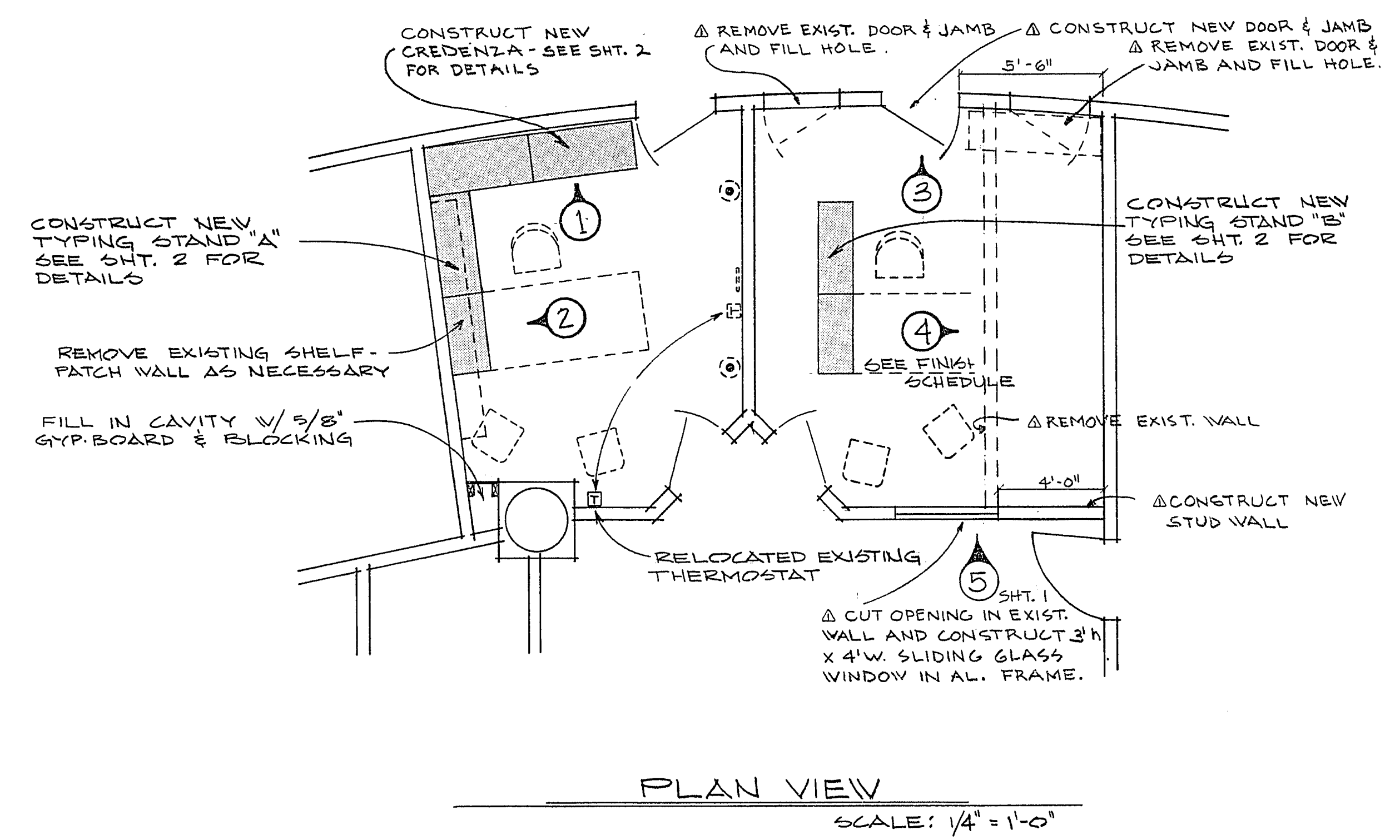
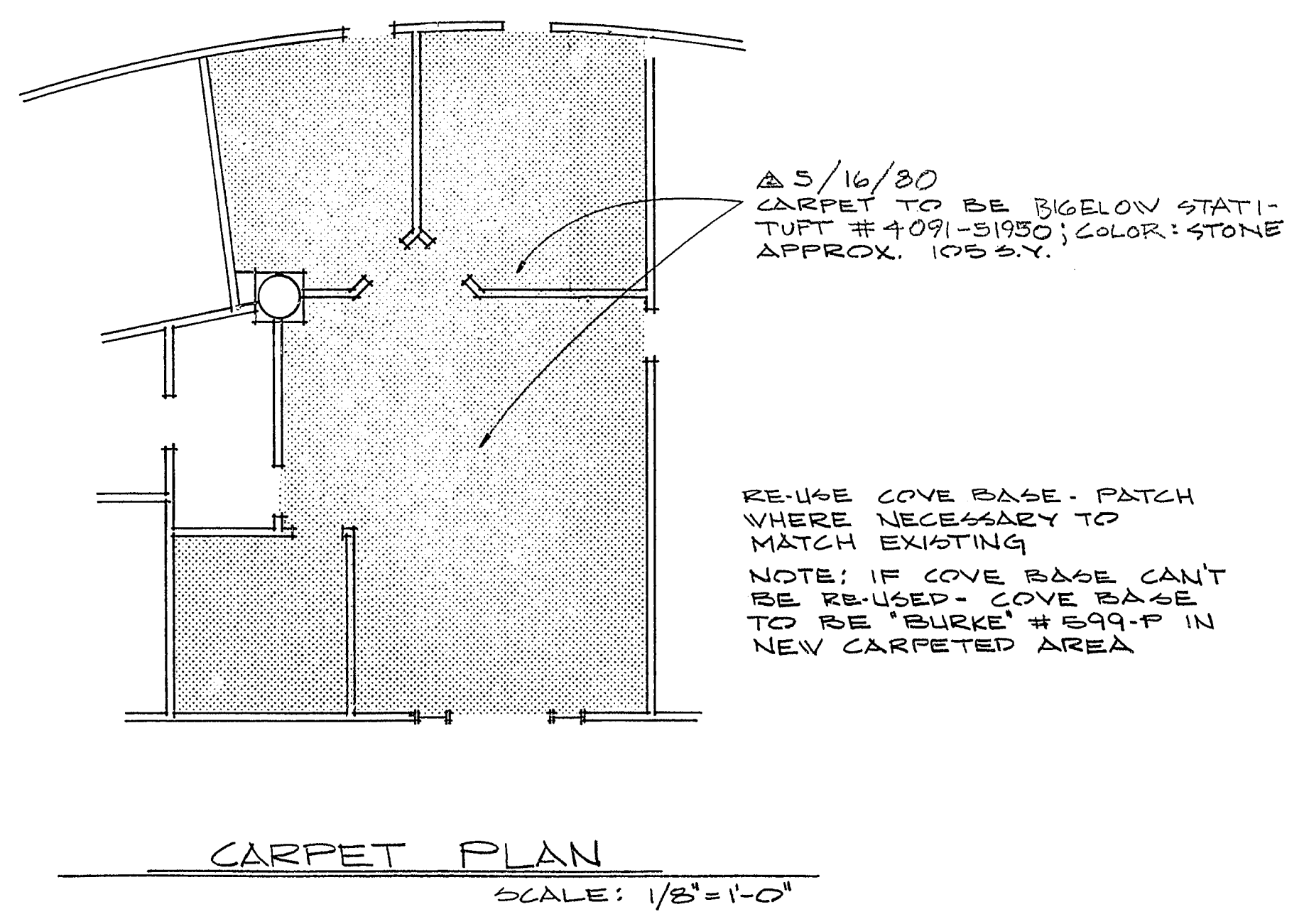


City of Las Vegas, Nevada
Office of Architectural Services and Project Control
 Don J. Saylor A.I.P. Deputy City Manager



FINISH	SCHEDULE
WALLPAPER- ELEVATION ①	"SANITAS COORDINATOR", SERIES 1, TANNERY, # 25-9208; PG. 97, RANDOM MATCH; 35 S.F./ROLL
ELEVATION ②	"SANITAS COORDINATOR", SERIES 1, BRANCHES, # 55-8976; PG. 92, 18" REPEAT; 35 S.F./ROLL
ELEVATION ③	"SANITAS COORDINATOR", SERIES 1, SACK CLOTH, # 55-8975; PG. 92, RANDOM MATCH; 35 S.F./ROLL
ELEVATION ④	"SANITAS COORDINATOR", SERIES 1, BRANCHES, # 55-8976; PG. 92, 18" REPEAT; 35 S.F./ROLL
NOTE: WALLPAPER AVAILABLE AT VEGAS PAINT	
PAINT	PAINT ALL REMAINING WALLS IN THE TWO OFFICES TO MATCH EXISTING. PATCH ALL WALLS IN OFFICES WHERE NECESSARY.



QUANTITY	COLOR	MATERIAL LIST DESCRIPTION
21	DK. WALNUT	SHELVE BRACKET - 10" LENGTH
6	"	WALL STANDARD - 12" LENGTH
3	"	WALL STANDARD - 24" LENGTH
3	"	WALL STANDARD - 36" LENGTH
4	"	SHELF - 10" W x 24" L x 5/8" TK
3	"	SHELF - 10" W x 36" L x 5/8" TK
1	"	SHELF - 10" W x 60" L x 5/8" TK

Don J. Saylor
 BUILDING & SAFETY 2/8/80
 DATE

Thomas [Signature]
 OFFICE OF ARCHITECTURAL SERVICE 2/8/80
 DATE

Carl Hamley RC Jauh
 CITY CLERK 2/8/80
 DATE

Don J. Saylor
 DEPUTY CITY MANAGER / COMMUNITY SERVICES 2-8-80
 DATE

CITY HALL 10TH FLOOR
 REMODEL FOR
 CITY CLERKS OFFICE

Revised By: RGR Date: 2/18/80
 Revised By: RGR Date: 2/18/80
 Revised By: RGR Date: 5/16/80
 Scale: AS SHOWN

Division: TECHNICAL SERVICES

Sheet 1
 Drawing No: 521-138
 of 2
 V.A. 0
 1361