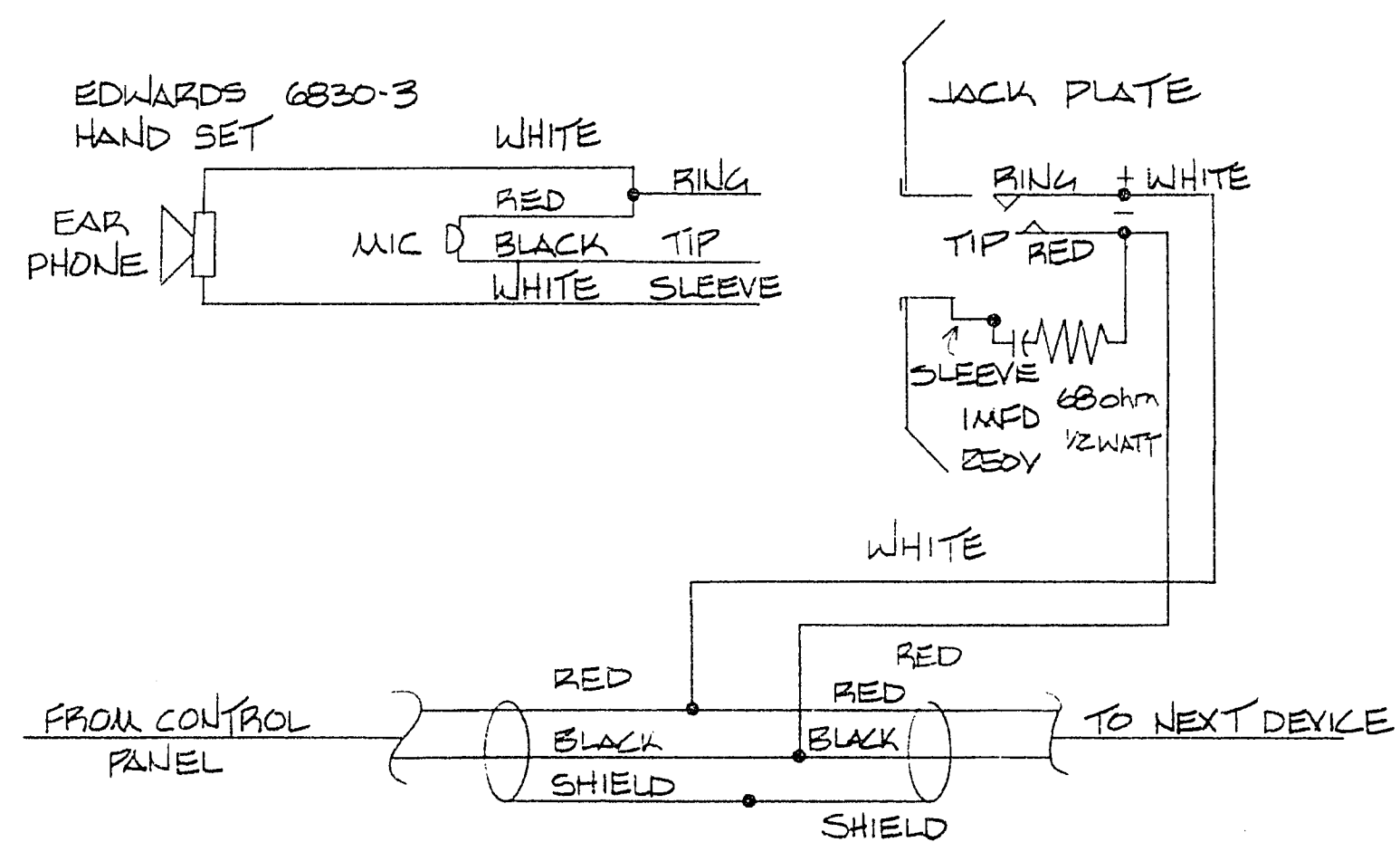
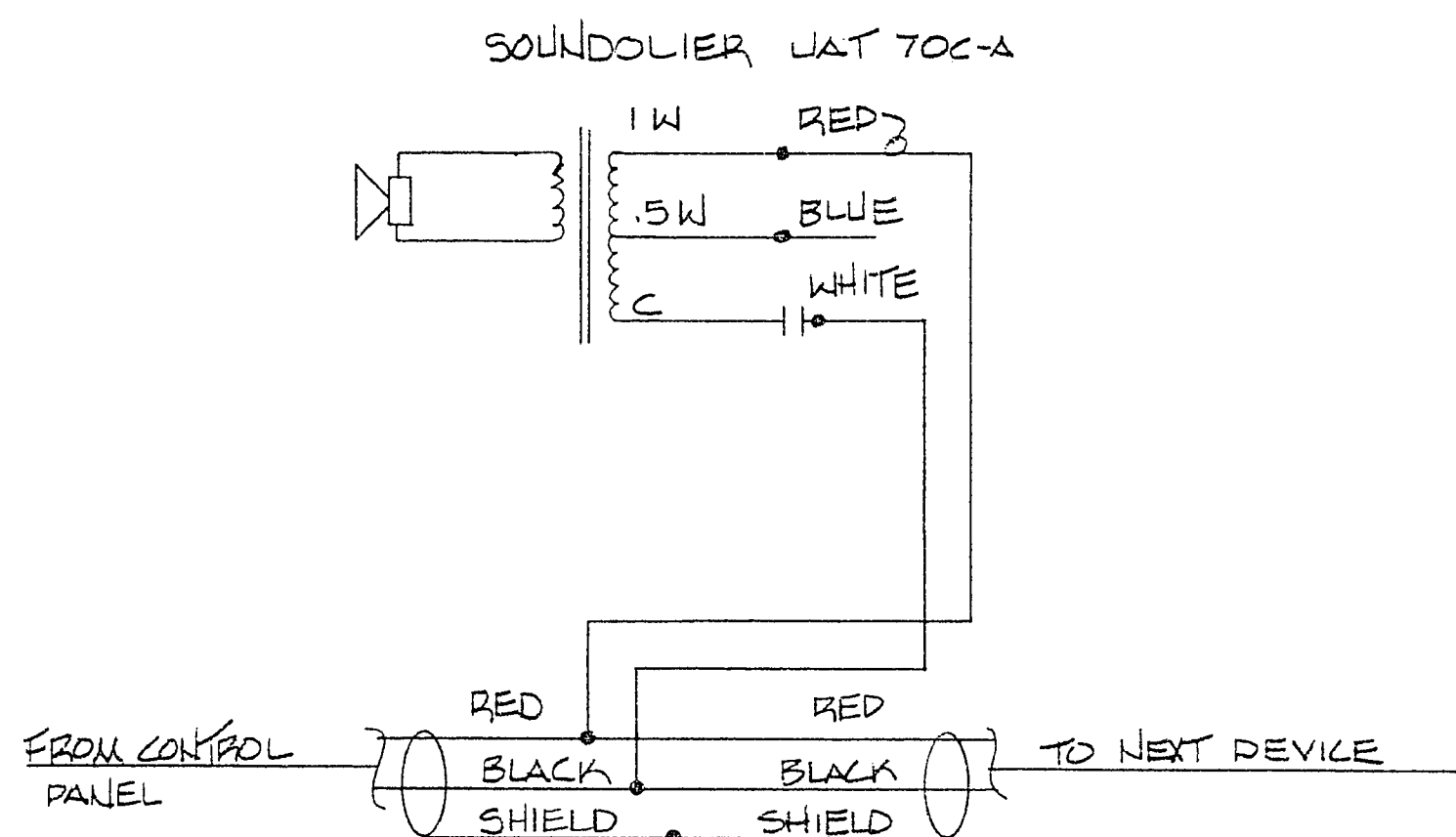


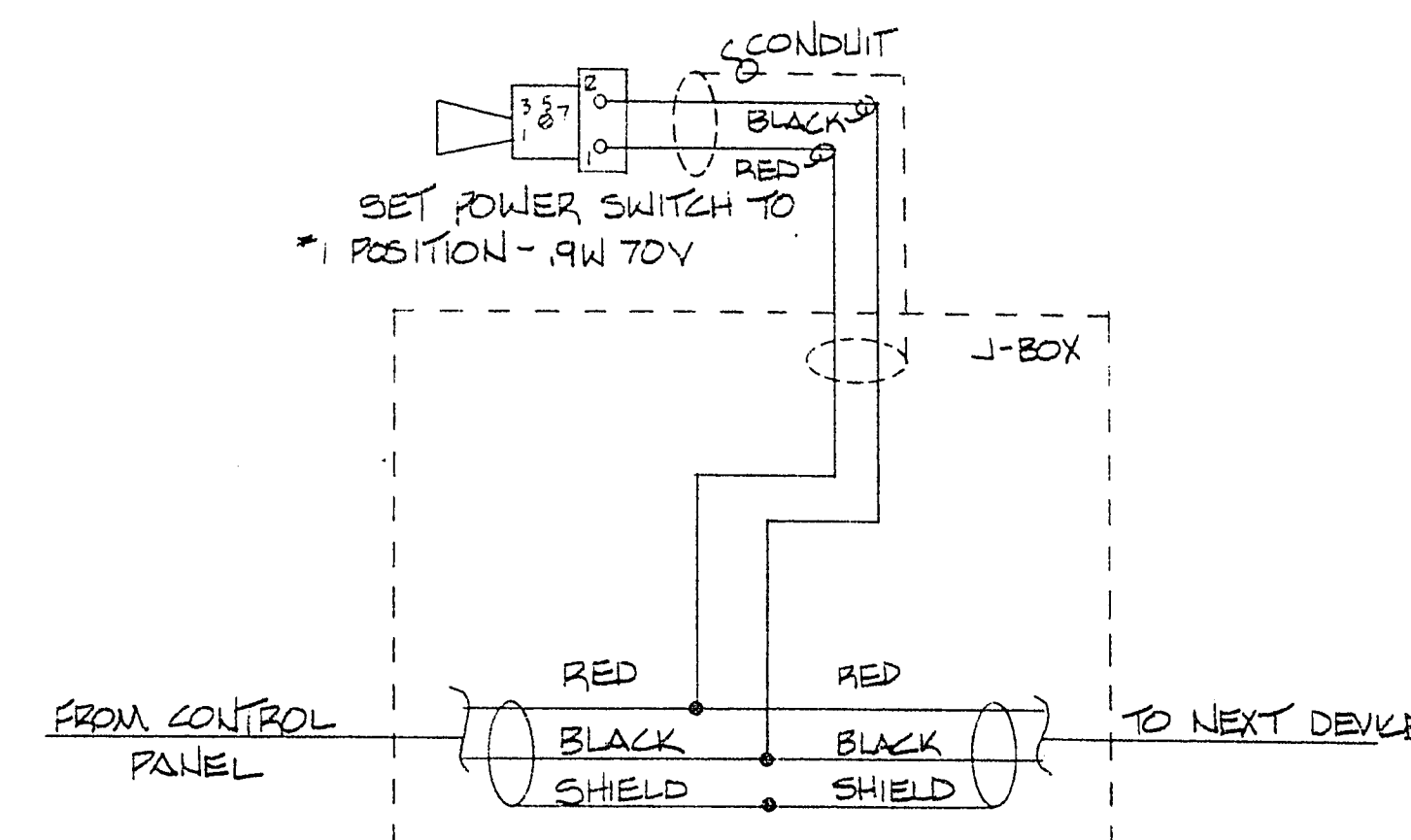
☑ SOUND POWER PHONE JACK (TYP.)



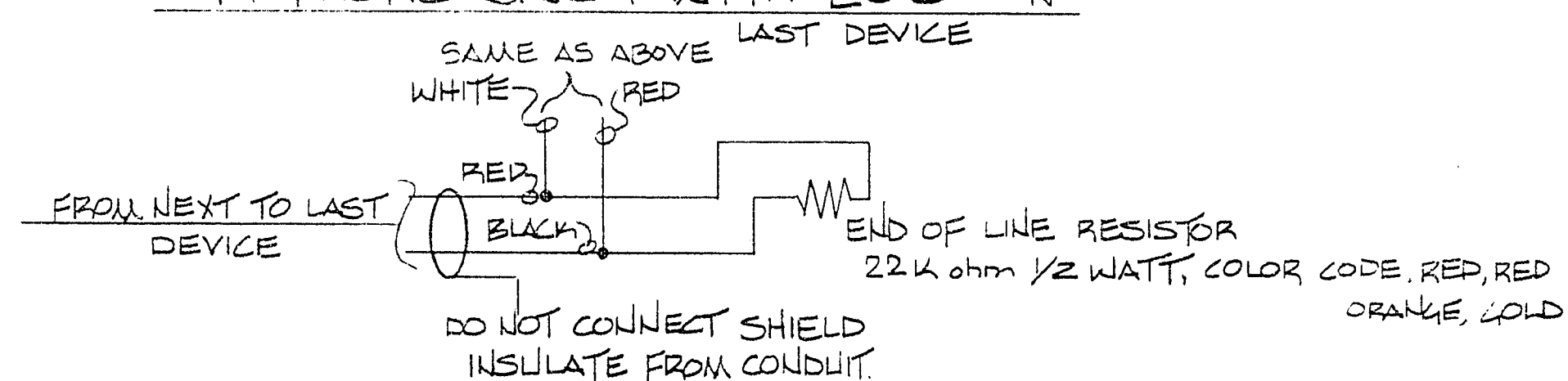
⑤ PAGING SPEAKER (TYP.)



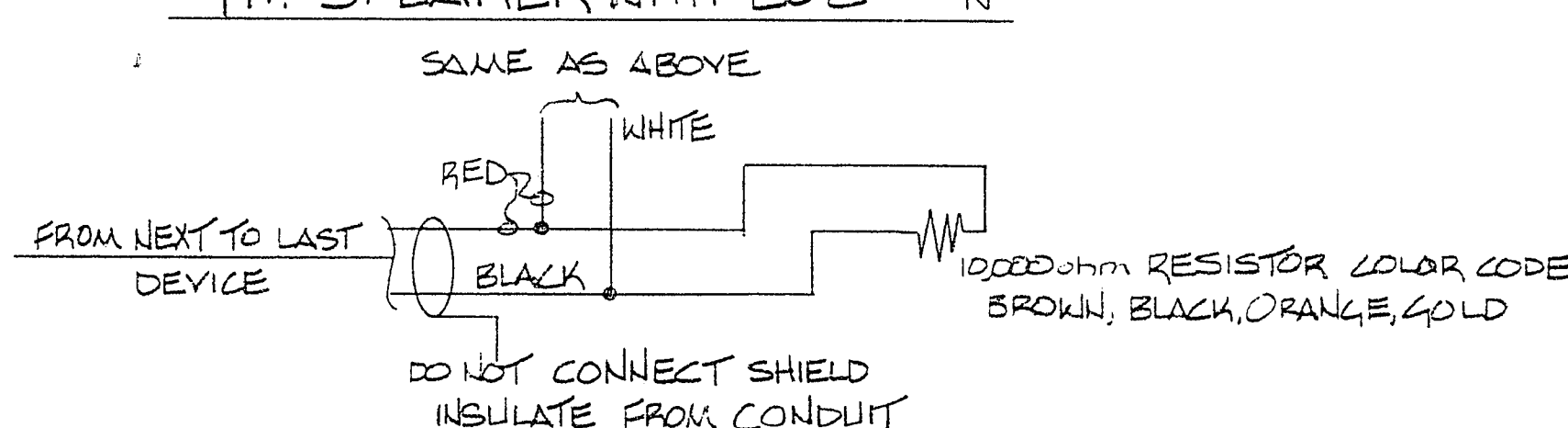
> PAGING HORN (TYP.)



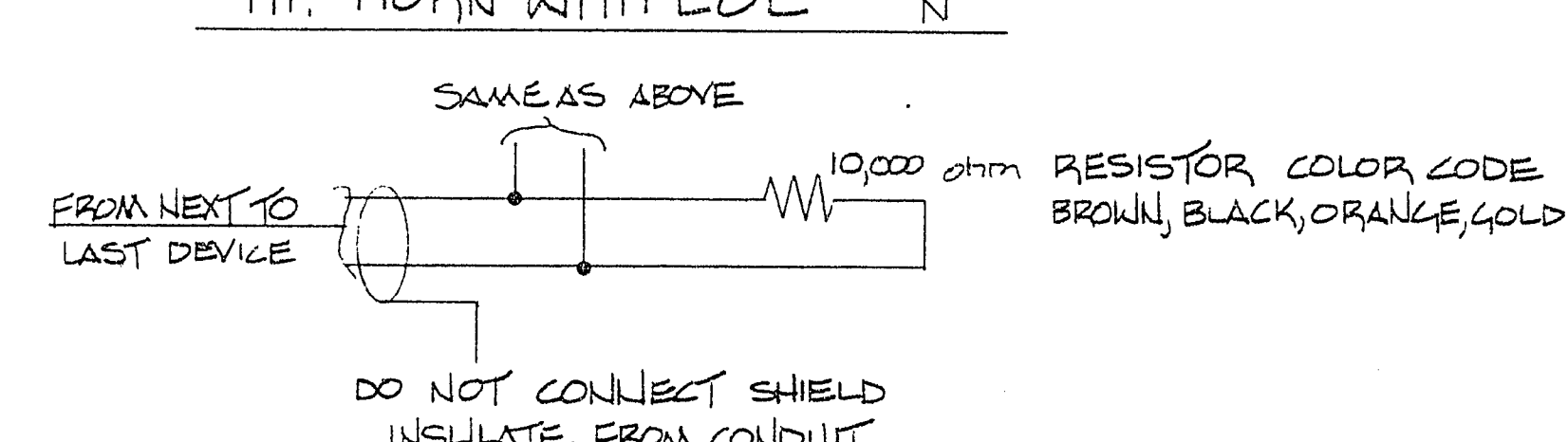
TYP. PHONE JACK WITH EOL — K



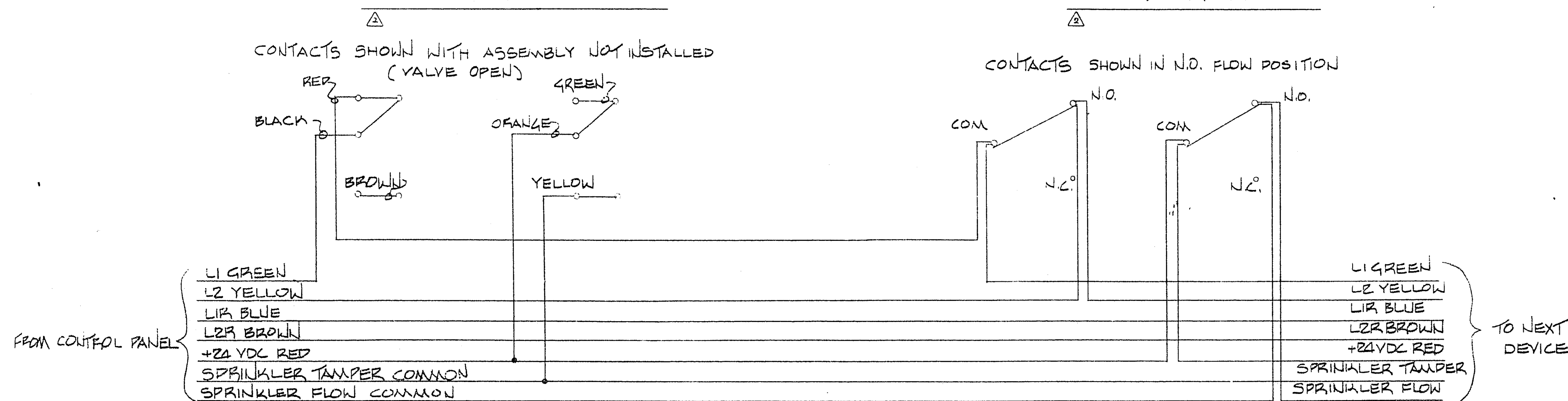
TYP. SPEAKER WITH EOL — K



TYP. HORN WITH EOL — K

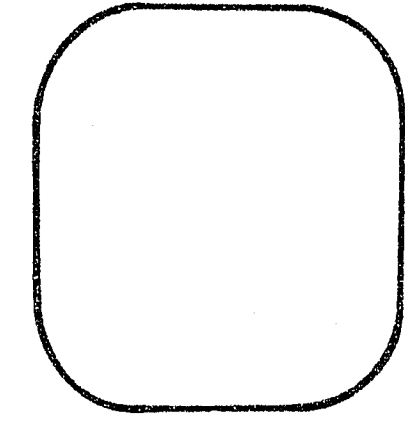
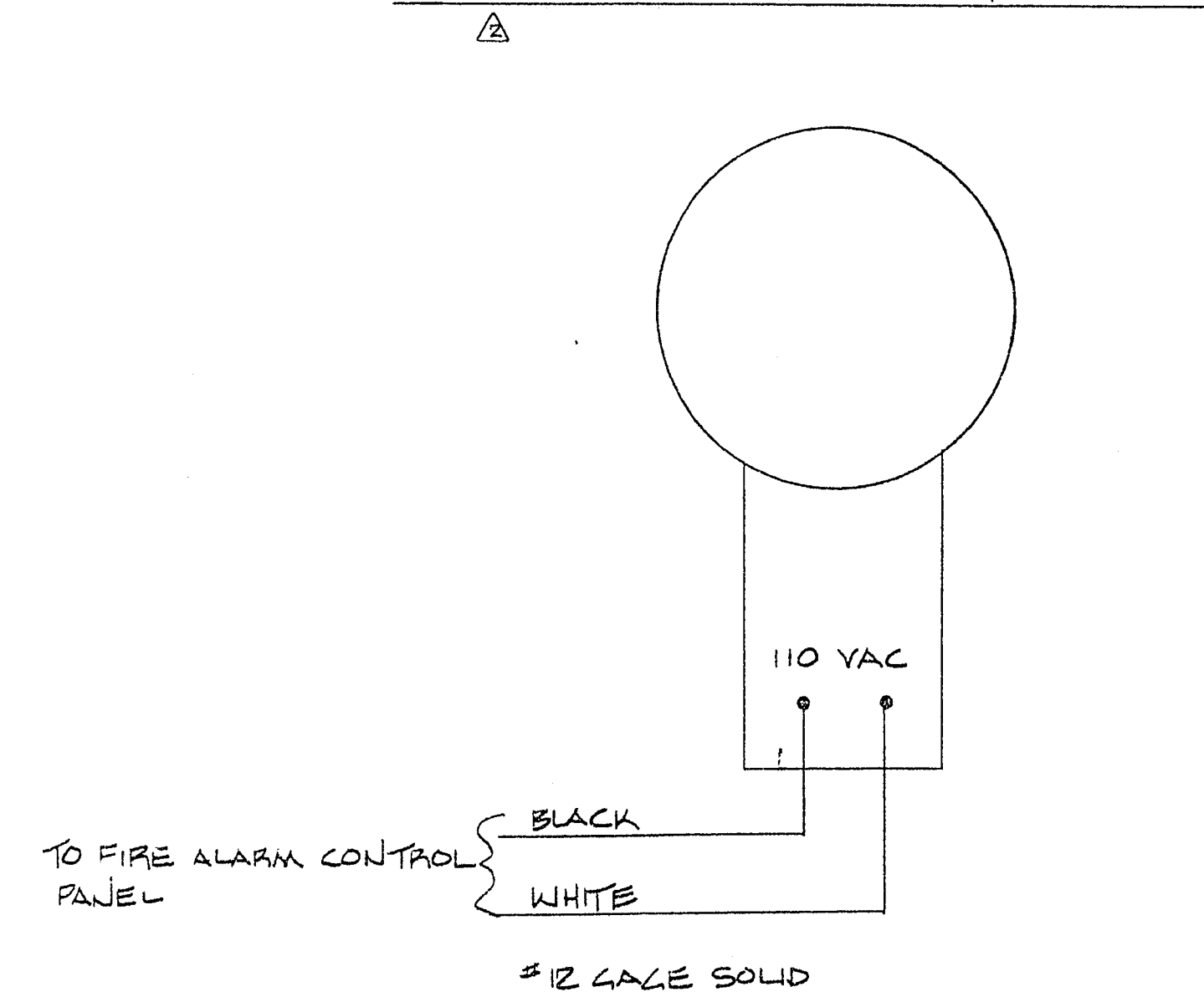


TAMPER SWITCH



FLOW SWITCH

SPRINKLER ALARM BELL



13-43

REVISION 2-10-83  
 AS BUILT 8/1/83